

SECTION	COUNTY	TOTAL SHEETS	SHEET NO.
94-F3000-05-BT	COOK	102	41
STA. TO STA.			
IDOT PROJECT NO. TE-D001(610)			
CENTENNIAL TRAIL			

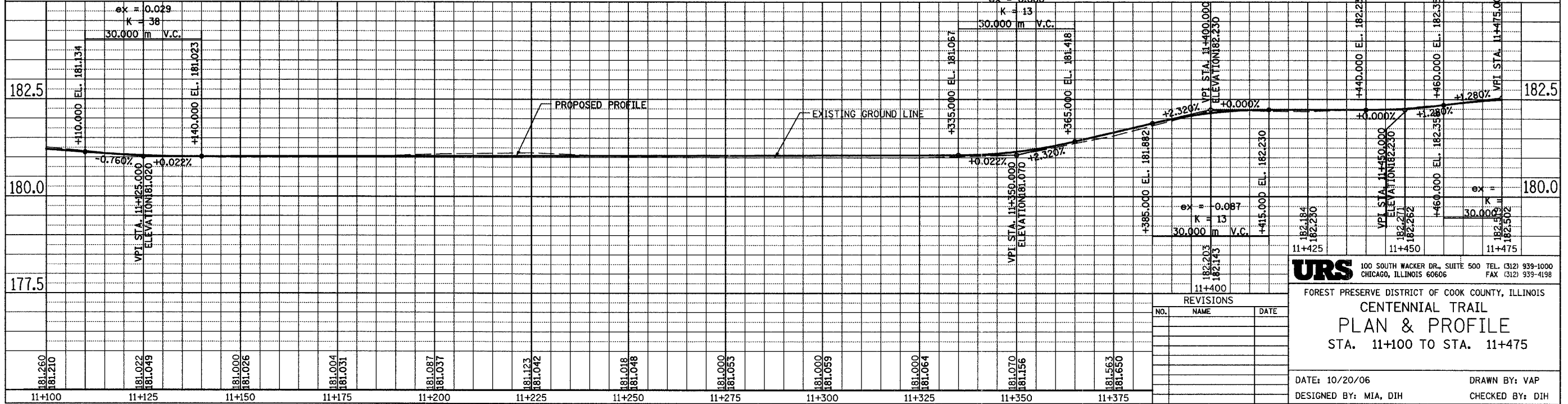
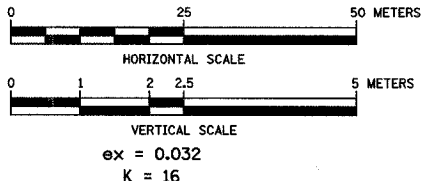
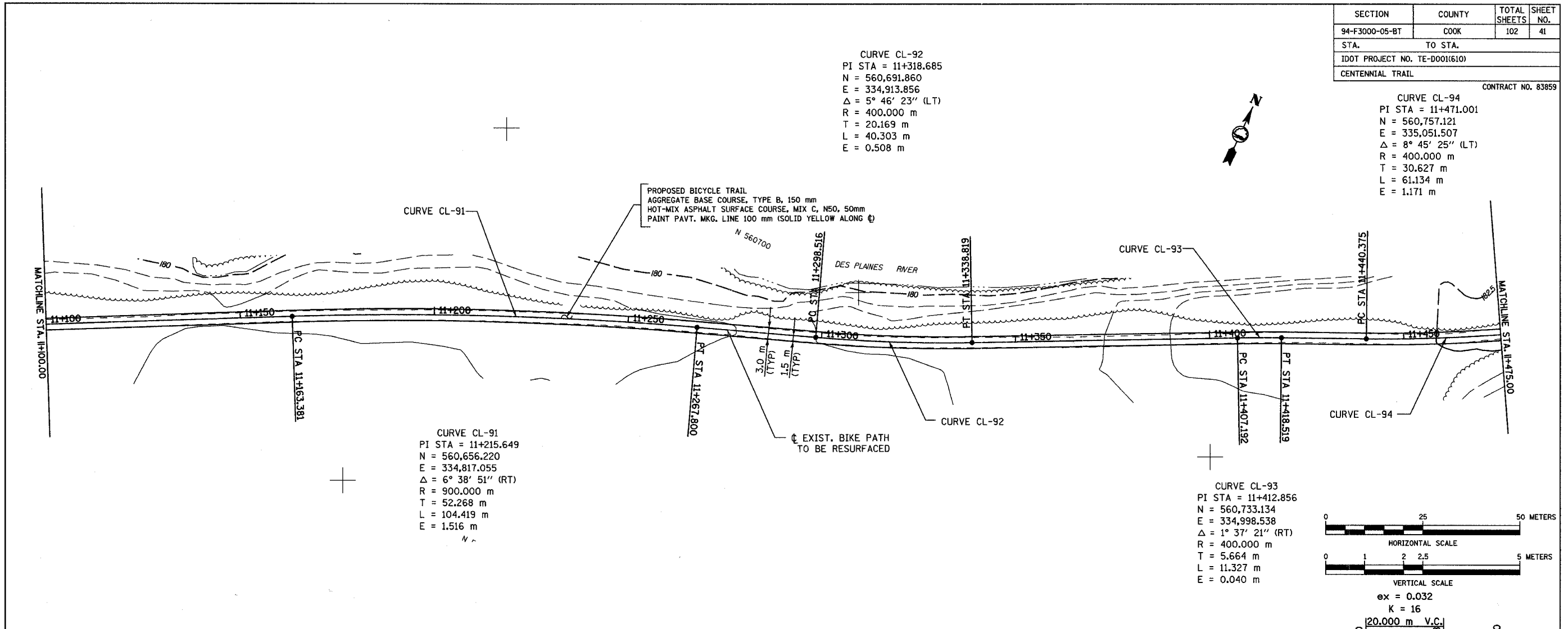
CONTRACT NO. 83859

CURVE CL-92  
 PI STA = 11+318.685  
 N = 560,691.860  
 E = 334,913.856  
 $\Delta = 5^\circ 46' 23''$  (LT)  
 R = 400.000 m  
 T = 20.169 m  
 L = 40.303 m  
 E = 0.508 m

CURVE CL-94  
 PI STA = 11+471.001  
 N = 560,757.121  
 E = 335,051.507  
 $\Delta = 8^\circ 45' 25''$  (LT)  
 R = 400.000 m  
 T = 30.627 m  
 L = 61.134 m  
 E = 1.171 m

CURVE CL-91  
 PI STA = 11+215.649  
 N = 560,656.220  
 E = 334,817.055  
 $\Delta = 6^\circ 38' 51''$  (RT)  
 R = 900.000 m  
 T = 52.268 m  
 L = 104.419 m  
 E = 1.516 m

CURVE CL-93  
 PI STA = 11+412.856  
 N = 560,733.134  
 E = 334,998.538  
 $\Delta = 1^\circ 37' 21''$  (RT)  
 R = 400.000 m  
 T = 5.664 m  
 L = 11.327 m  
 E = 0.040 m



NO.	NAME	DATE

**URS** 100 SOUTH WACKER DR., SUITE 500 TEL. (312) 939-1000  
 CHICAGO, ILLINOIS 60606 FAX (312) 939-4198

FOREST PRESERVE DISTRICT OF COOK COUNTY, ILLINOIS  
**CENTENNIAL TRAIL**  
**PLAN & PROFILE**  
 STA. 11+100 TO STA. 11+475

DATE: 10/20/06 DRAWN BY: VAP  
 DESIGNED BY: MIA, DIH CHECKED BY: DIH