

SECTION	COUNTY	TOTAL SHEETS	SHEET NO.
94-F3000-05-BT	COOK	102	36
STA. TO STA.			
IDOT PROJECT NO. TE-D001(610)			
CENTENNIAL TRAIL			

CONTRACT NO. 83859

CURVE CL-77
 PI STA = 9+403.263
 N = 559,637.314
 E = 333,321.823
 $\Delta = 5^\circ 37' 51''$ (LT)
 R = 150.000 m
 T = 7.377 m
 L = 14.741 m
 E = 0.181 m

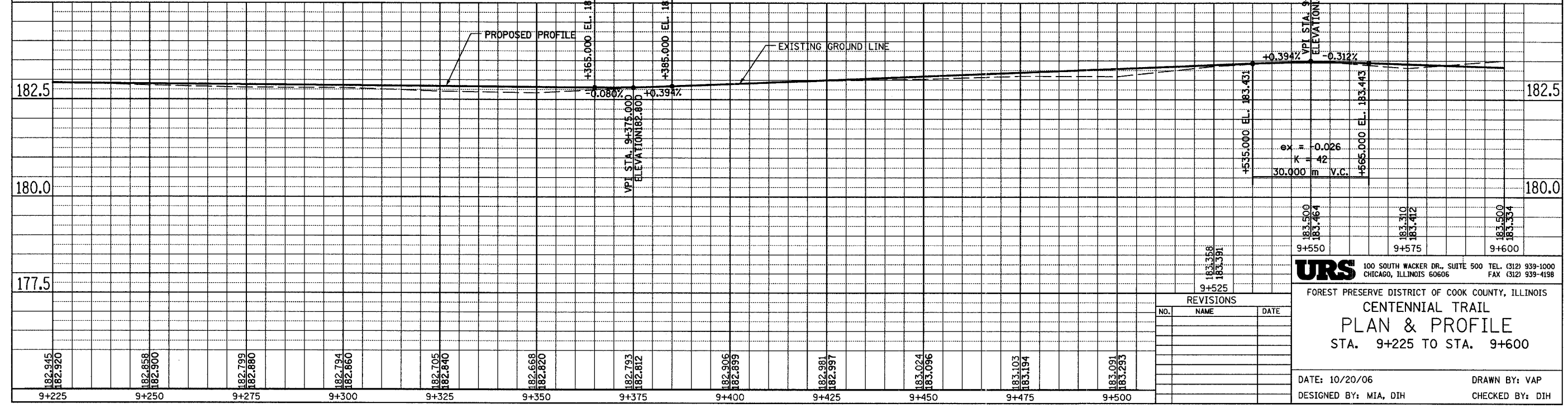
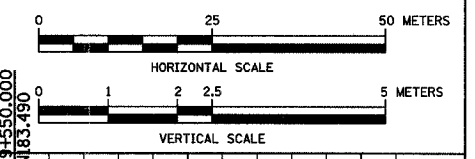
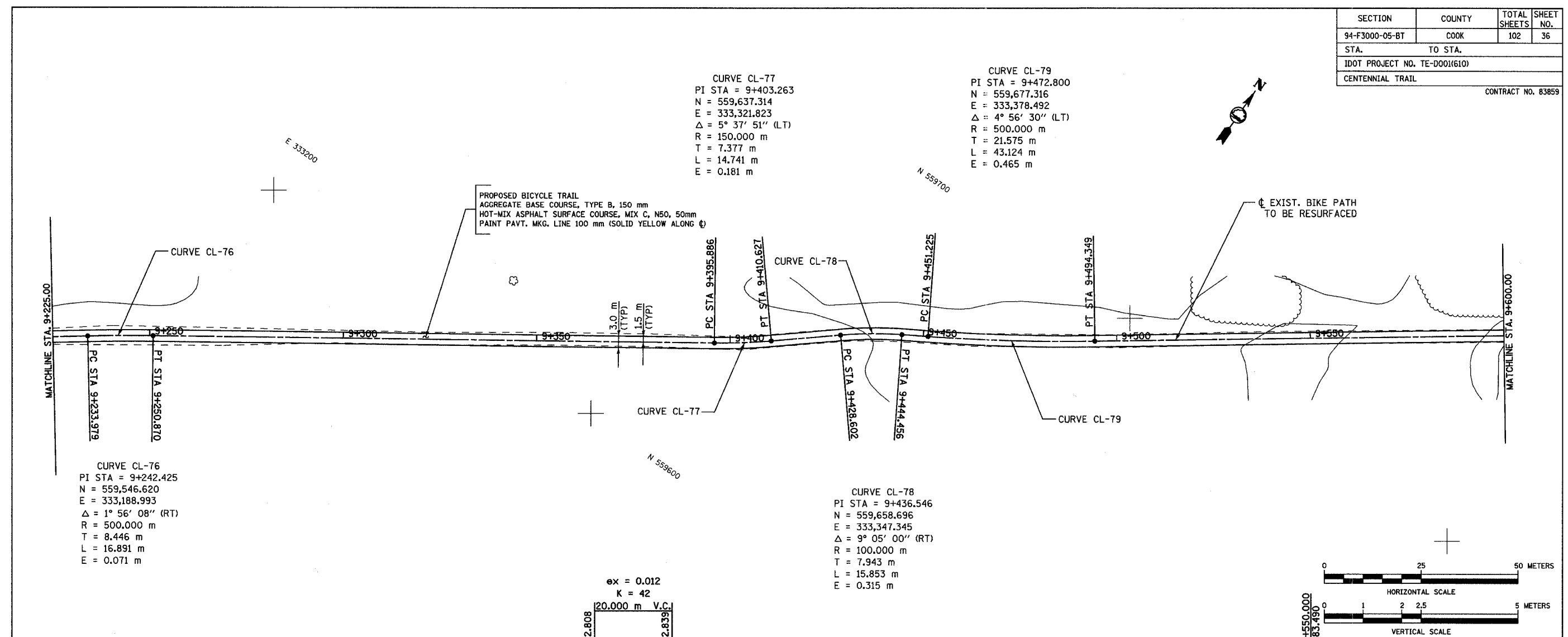
CURVE CL-79
 PI STA = 9+472.800
 N = 559,677.316
 E = 333,378.492
 $\Delta = 4^\circ 56' 30''$ (LT)
 R = 500.000 m
 T = 21.575 m
 L = 43.124 m
 E = 0.465 m

CURVE CL-76
 PI STA = 9+242.425
 N = 559,546.620
 E = 333,188.993
 $\Delta = 1^\circ 56' 08''$ (RT)
 R = 500.000 m
 T = 8.446 m
 L = 16.891 m
 E = 0.071 m

CURVE CL-78
 PI STA = 9+436.546
 N = 559,658.696
 E = 333,347.345
 $\Delta = 9^\circ 05' 00''$ (RT)
 R = 100.000 m
 T = 7.943 m
 L = 15.853 m
 E = 0.315 m

PROPOSED BICYCLE TRAIL
 AGGREGATE BASE COURSE, TYPE B, 150 mm
 HOT-MIX ASPHALT SURFACE COURSE, MIX C, N50, 50mm
 PAINT PAVT. MKG. LINE 100 mm (SOLID YELLOW ALONG ϕ)

ϕ EXIST. BIKE PATH
 TO BE RESURFACED



REVISIONS		
NO.	NAME	DATE

URS 100 SOUTH WACKER DR., SUITE 500 TEL. (312) 939-1000
 CHICAGO, ILLINOIS 60606 FAX (312) 939-4198

FOREST PRESERVE DISTRICT OF COOK COUNTY, ILLINOIS
CENTENNIAL TRAIL
PLAN & PROFILE
 STA. 9+225 TO STA. 9+600

DATE: 10/20/06 DRAWN BY: VAP
 DESIGNED BY: MIA, DIH CHECKED BY: DIH