

NOTE 1: REMOVE EXISTING GUARDRAIL AS REQUIRED TO INSTALL TRAFFIC TERMINAL T.Y.I, SPECIAL (TANGENT)

NOTE 2: INSTALL GUARDRAIL END SECTION; INCIDENTAL TO GUARDRAIL REMOVAL

CROSSWALK PAVEMENT MARKING SEE STREET INTERSECTION AND PAVEMENT DETAIL, SHEET 70

PCC SIDEWALK 2 m X 3 m W/DETECTABLE WARNING 0.6 m X 3 m (TYP)
DROP GATE SPECIAL STA. 2+439

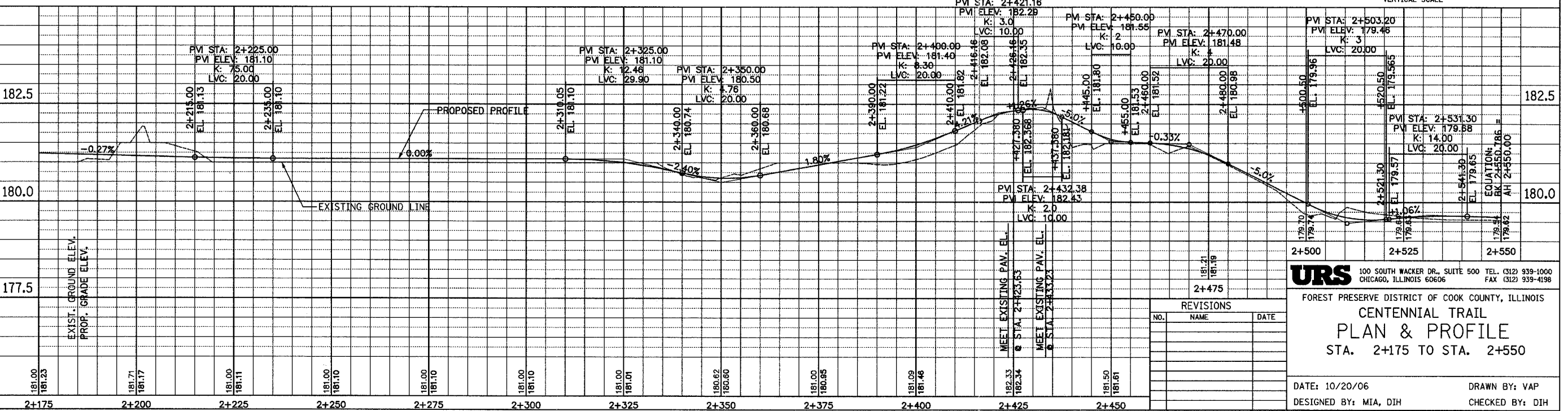
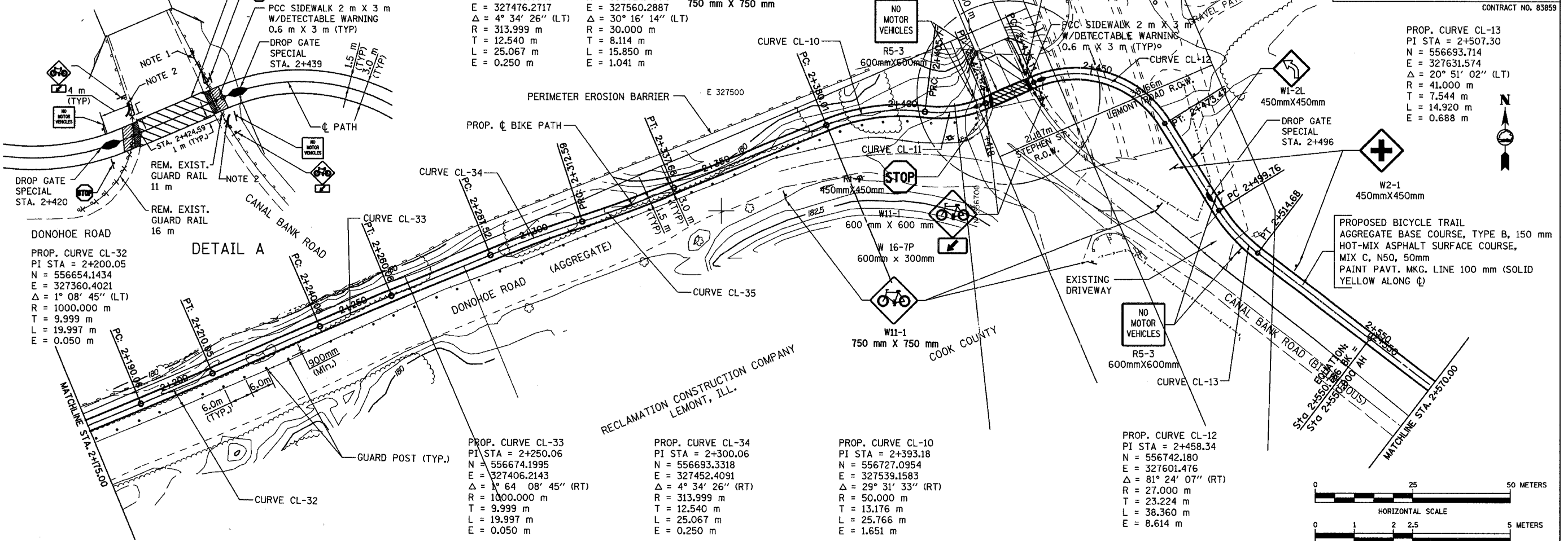
PROP. CURVE CL-35
PI STA = 2+325.13
N = 556701.0501
E = 327476.2717
 $\Delta = 4^\circ 34' 26''$ (LT)
R = 313.999 m
T = 12.540 m
L = 25.067 m
E = 0.250 m

PROP. CURVE CL-11
PI STA = 2+413.89
N = 556724.4904
E = 327560.2887
 $\Delta = 30^\circ 16' 14''$ (LT)
R = 30.000 m
T = 8.114 m
L = 15.850 m
E = 1.041 m

SECTION	COUNTY	TOTAL SHEETS	SHEET NO.
94-F3000-05-BT	COOK	102	17
STA. TO STA.			
IDOT PROJECT NO. TE-D001(610)			
CENTENNIAL TRAIL			

CONTRACT NO. 83859

PROP. CURVE CL-13
PI STA = 2+507.30
N = 556693.714
E = 327631.574
 $\Delta = 20^\circ 51' 02''$ (LT)
R = 41.000 m
T = 7.544 m
L = 14.920 m
E = 0.688 m



URS 100 SOUTH WACKER DR., SUITE 500 TEL. (312) 939-1000
CHICAGO, ILLINOIS 60606 FAX (312) 939-4198

FOREST PRESERVE DISTRICT OF COOK COUNTY, ILLINOIS

CENTENNIAL TRAIL

PLAN & PROFILE

STA. 2+175 TO STA. 2+550

NO.	NAME	DATE

DATE: 10/20/06 DRAWN BY: VAP
DESIGNED BY: MIA, DIH CHECKED BY: DIH