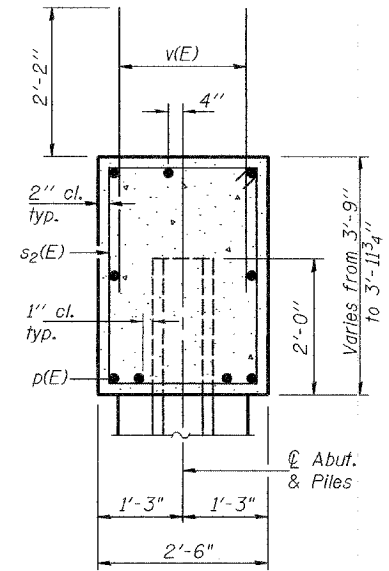
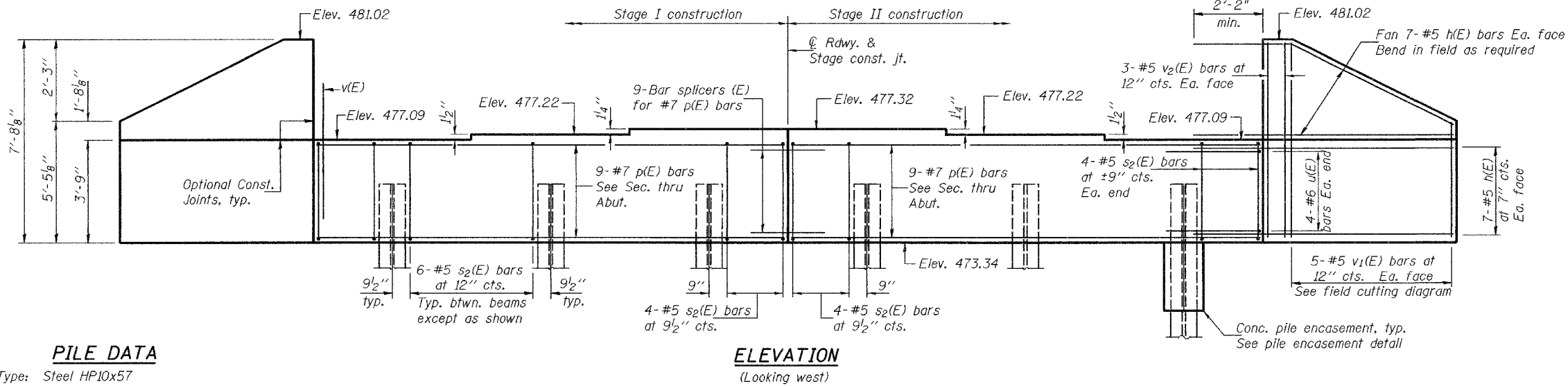


Notes: Four steps monolithically with cap.
 For anchor bolt installation details, see sheet 14 of 25.
 For bar splicer assembly details, see sheet 21 of 25.

STATE OF ILLINOIS
 DEPARTMENT OF TRANSPORTATION

ROUTE NO.	SECTION	COUNTY	STATION	SHEET NO.	SHEET NO. 15
FAP 789	54BR-1	MADISON	62	39	25 SHEETS
FED. ROAD DIST. NO. 7	ILLINOIS	FED. AID PROJECT-			

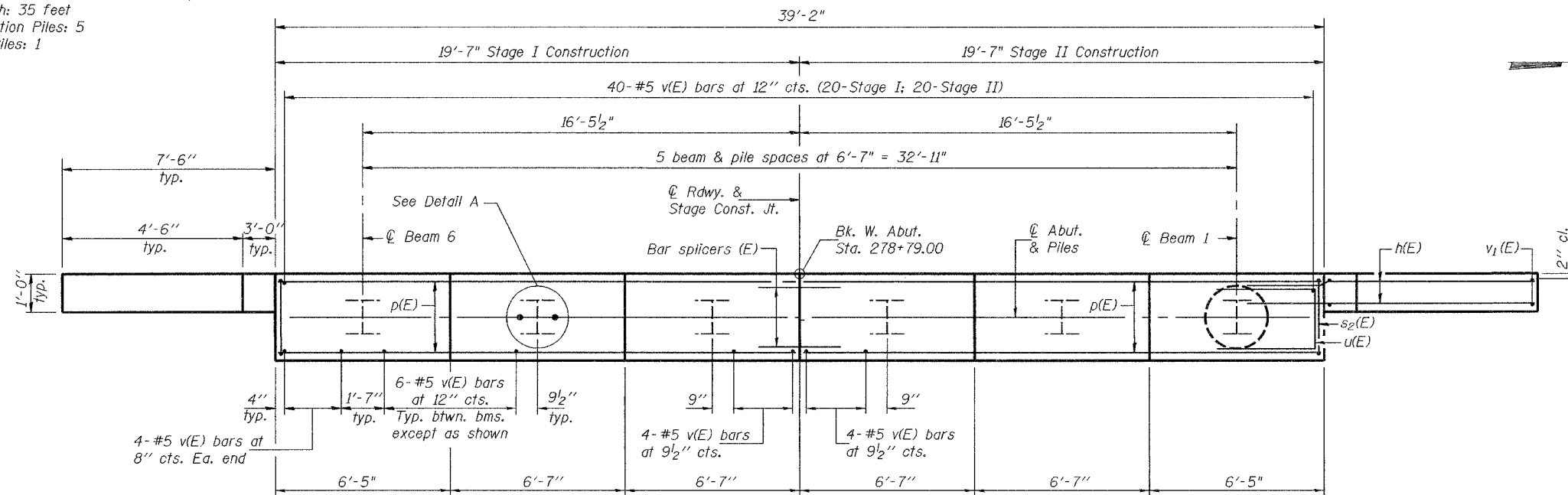
Contract #76864



PILE DATA

Type: Steel HP10x57
 Nominal Required Bearing: 454 kips
 Factored Resistance Available: 227 kips
 Est. Length: 35 feet
 No. Production Piles: 5
 No. Test Piles: 1

ELEVATION
 (Looking west)

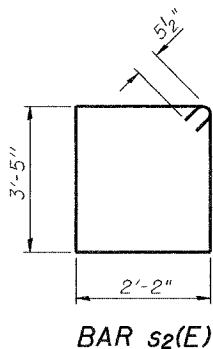


PLAN

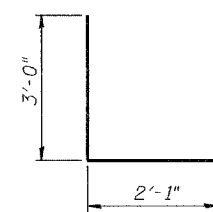
SEC. THRU ABUT.

BILL OF MATERIAL

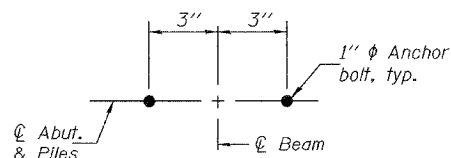
Bar	No.	Size	Length	Shape
h(E)	56	#5	10'-0"	
p(E)	18	#7	19'-3"	
s2(E)	40	#5	12'-1"	
u(E)	8	#6	8'-1"	
v(E)	80	#5	4'-4"	
v1(E)	10	#5	12'-5"	
v2(E)	12	#5	7'-4"	
Concrete Structures		Cu. Yd.	17.9	
Reinforcement Bars, Epoxy Coated		Pound	2480	
Structure Excavation		Cu. Yd.	90	
Furnishing Steel Piles HP10x57		Foot	175	
Driving Piles		Foot	175	
Test Pile Steel HP10x57		Each	1	
Concrete Encasement		Cu. Yd.	1.6	
Anchor Bolts 1"		Each	12	



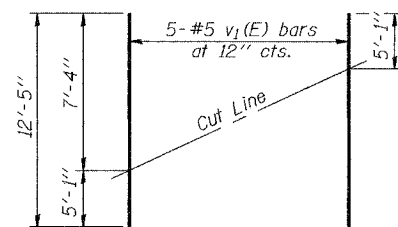
BAR s2(E)



BAR u(E)

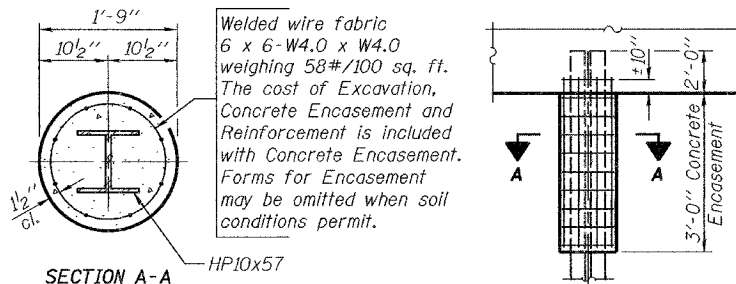


DETAIL A



FIELD CUTTING DIAGRAM

Order v1(E) full length. Cut as shown and use remainder of bars in opposite face.



SECTION A-A

PILE ENCASEMENT DETAIL

Welded wire fabric 6 x 6-W4.0 x W4.0 weighing 58#/100 sq. ft. The cost of Excavation, Concrete Encasement and Reinforcement is included with Concrete Encasement. Forms for Encasement may be omitted when soil conditions permit.

DESIGNED	Curt M. Evoy
CHECKED	Nick R. Barnett
DRAWN	h.t. duong
CHECKED	CME/NRB

Nov. 15, 2006
 EXAMINED *Thomas J. Demagallaki*
 ENGINEER OF BRIDGES AND STRUCTURES
 PASSED *Ralph E. Anderson*
 ENGINEER OF BRIDGES AND STRUCTURES

WEST ABUTMENT
F.A.P. RTE. 789 - SEC. 54BR-1
MADISON COUNTY
STATION 280+73
STRUCTURE NO. 060-0340