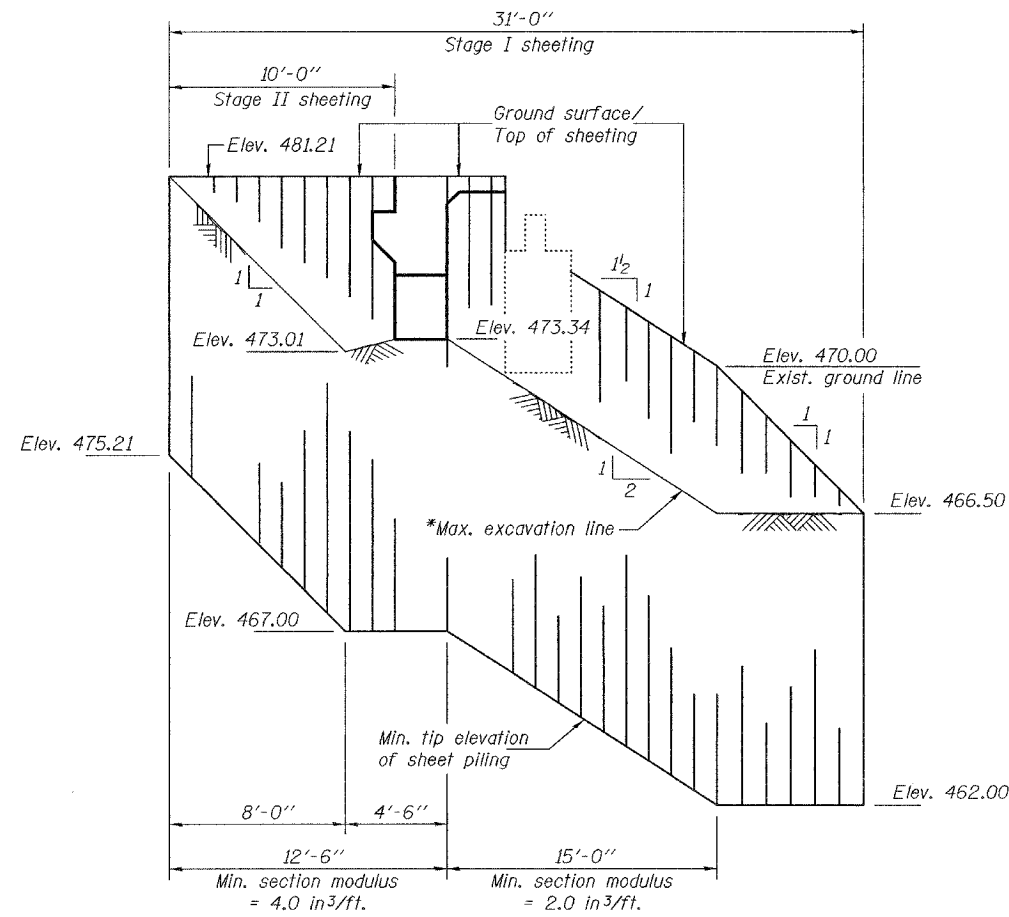


STATE OF ILLINOIS
DEPARTMENT OF TRANSPORTATION

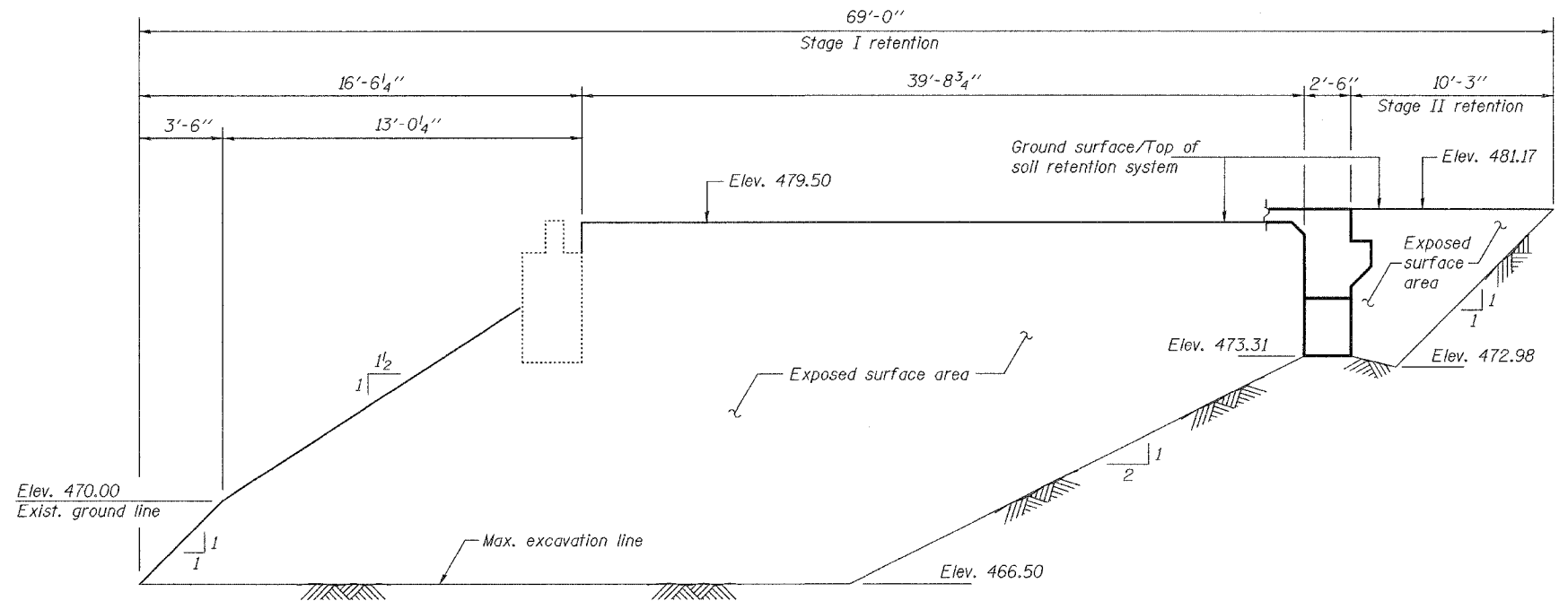
ROUTE NO.	SECTION	COUNTY	SHEETS	SHEET	SHEET NO. 3 25 SHEETS
FAP 789	54BR-1	MADISON	62	27	
FED. ROAD DIST. NO. 7	ILLINOIS	FED. AID PROJECT			

Contract #76864



**TEMPORARY SHEET PILING
AT WEST ABUTMENT**

* Existing Stage I Traffic abutment piles shall not be exposed or undermined during Stage I Construction. Adjust excavation line at temporary sheet piling line accordingly.



**TEMPORARY SOIL RETENTION SYSTEM
AT EAST ABUTMENT**

Notes: If the Contractor chooses to alter the temporary cantilevered sheet piling design requirements shown on the plans, a design submittal including plan details and calculations will be required for review and acceptance by the Engineer.
A cantilevered sheet piling design does not appear feasible at the East Abutment and additional members or other retention systems may be necessary. The Contractor shall submit a Temporary Soil Retention System design including plan details and calculations for review and acceptance by the Engineer.

DESIGNED	Curt M. Evoy
CHECKED	Nick R. Barnett
DRAWN	h.t. duong
CHECKED	CME/NRB

EXAMINED	Thomas J. Damagala ENGINEER OF BRIDGES AND STRUCTURES
PASSED	Ralph E. Anderson ENGINEER OF BRIDGES AND STRUCTURES

SOIL RETENTION SYSTEM DETAILS
F.A.P. RTE. 789 - SEC. 54BR-1
MADISON COUNTY
STATION 280+73
STRUCTURE NO. 060-0340