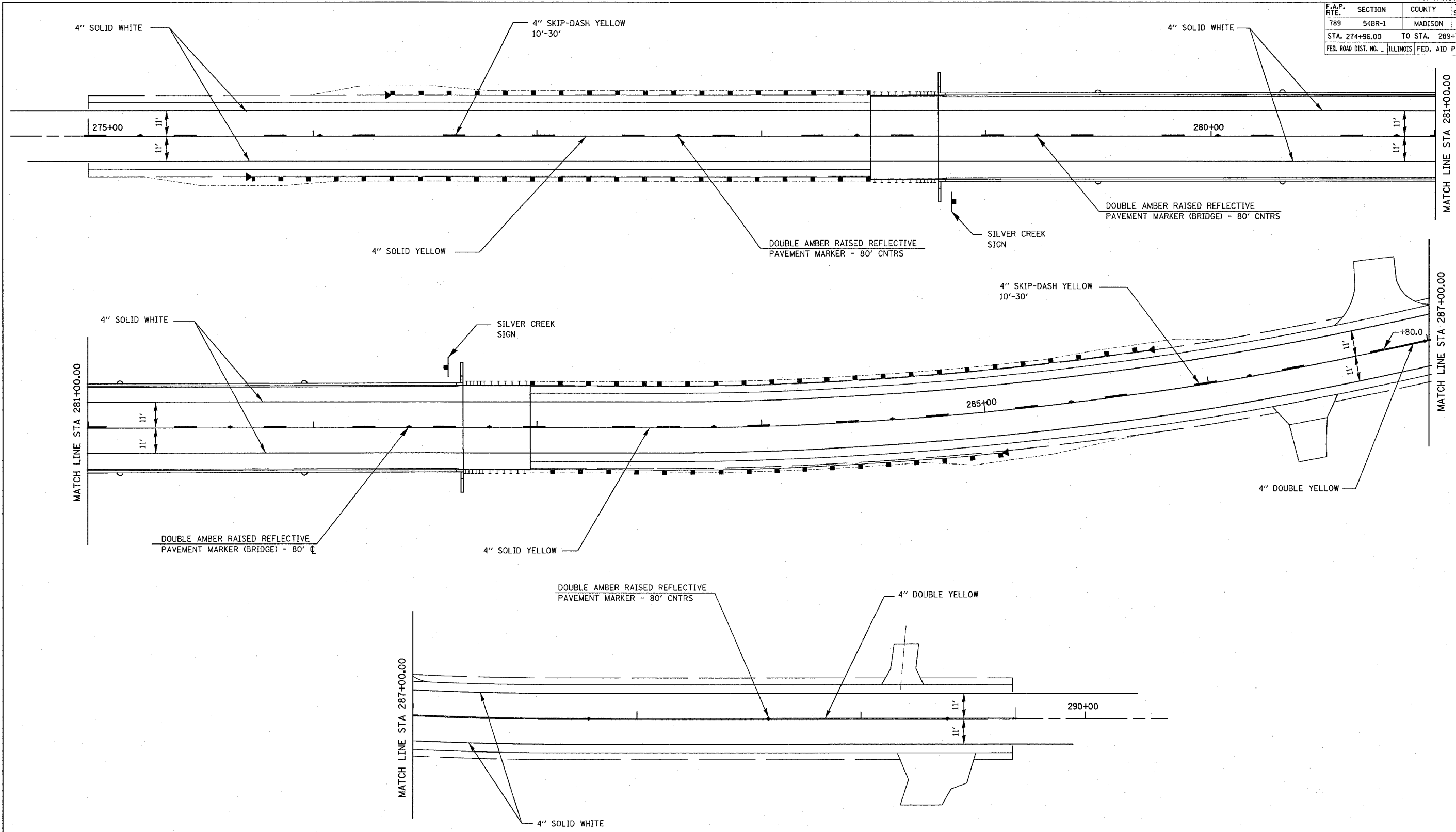


F.A.P. RTE.	SECTION	COUNTY	TOTAL SHEETS	SHEET NO.
789	54BR-1	MADISON	62	23
STA. 274+96.00		TO STA. 289+71.62		
FED. ROAD DIST. NO. ILLINOIS		FED. AID PROJECT		



PLOT DATE = 10/10/2005
 FILE NAME = c:\projects\789\54BR-1\pav01.dwg
 PLOT SCALE = 20.00000 / IN.
 REFERENCE = #REF#

REVISIONS	
NAME	DATE

ILLINOIS DEPARTMENT OF TRANSPORTATION
PAVEMENT MARKING DETAILS
 FAP ROUTE 789
 SECTION 54BR-1
 MADISON COUNTY

SCALE: VERT. _____
 HORIZ. _____

DATE _____ DRAWN BY _____
 CHECKED BY _____