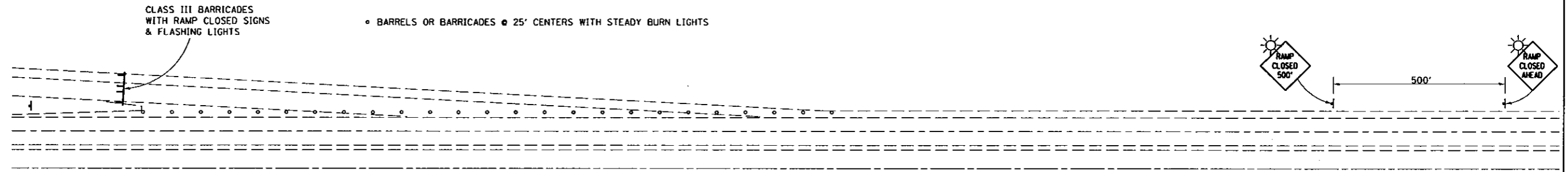


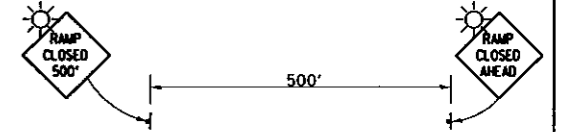
F.A.I. R.T.E.	SECTION	COUNTY	TOTAL SHEETS	SHEET NO.
74	110-4.5MRS	VERMILION	13	11

# TYPICAL APPLICATION OF TRAFFIC CONTROL DEVICES FOR RAMP CLOSURE



CLASS III BARRICADES WITH RAMP CLOSED SIGNS & FLASHING LIGHTS

• BARRELS OR BARRICADES @ 25' CENTERS WITH STEADY BURN LIGHTS



**NOTE:** NOT TO SCALE

## GENERAL NOTES

THESE ITEMS WILL NOT BE PAID FOR SEPARATELY BUT SHALL BE CONSIDERED AS INCLUDED IN THE CONTRACT UNIT PRICE FOR TRAFFIC CONTROL & PROTECTION STANDARD 701201.

THE FOLLOWING SIGNS WILL NOT BE NEEDED AS PART OF THIS SET-UP OF TRAFFIC CONTROL AND PROTECTION (SPECIAL):  
1-WORK ZONE SPEED LIMIT SIGNS  
2-CONSTRUCTION SPEED LIMIT SIGNS  
3-END WORK ZONE SPEED LIMIT SIGNS

NO LIGHTS ARE REQUIRED IF RAMP IS CLOSED DURING DAYLIGHT HOURS.

CONTACT THE DISTRICT TRAFFIC OPERATIONS ENGINEER AT 217-465-4181, ONE WEEK PRIOR TO CLOSING THE RAMP.

SEE THE CONTRACT SPECIAL PROVISIONS.