

F.A.I. RTE.	SECTION	COUNTY	TOTAL SHEETS	SHEET NO.
74	(10-4,5)MRS	VERMILION	13	1

STATE OF ILLINOIS
DEPARTMENT OF TRANSPORTATION
DIVISION OF HIGHWAYS

**PROPOSED
HIGHWAY PLANS**

FAI ROUTE 74 (I-74)
SECTION (10-4,5)MRS
VERMILION COUNTY

C-95-073-06

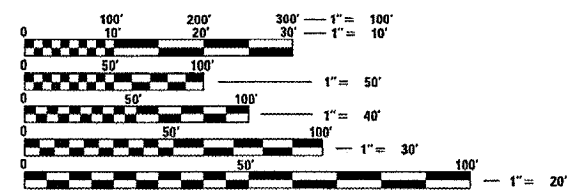
**HOT-MIX ASPHALT INLAY ON EB & WB EXIT RAMP
AT FAS 331 (OAKWOOD) INTERCHANGE**

FOR INDEX OF SHEETS, SEE SHEET NO. 2
FOR SUMMARY OF QUANTITIES, SEE SHEET NO. 4



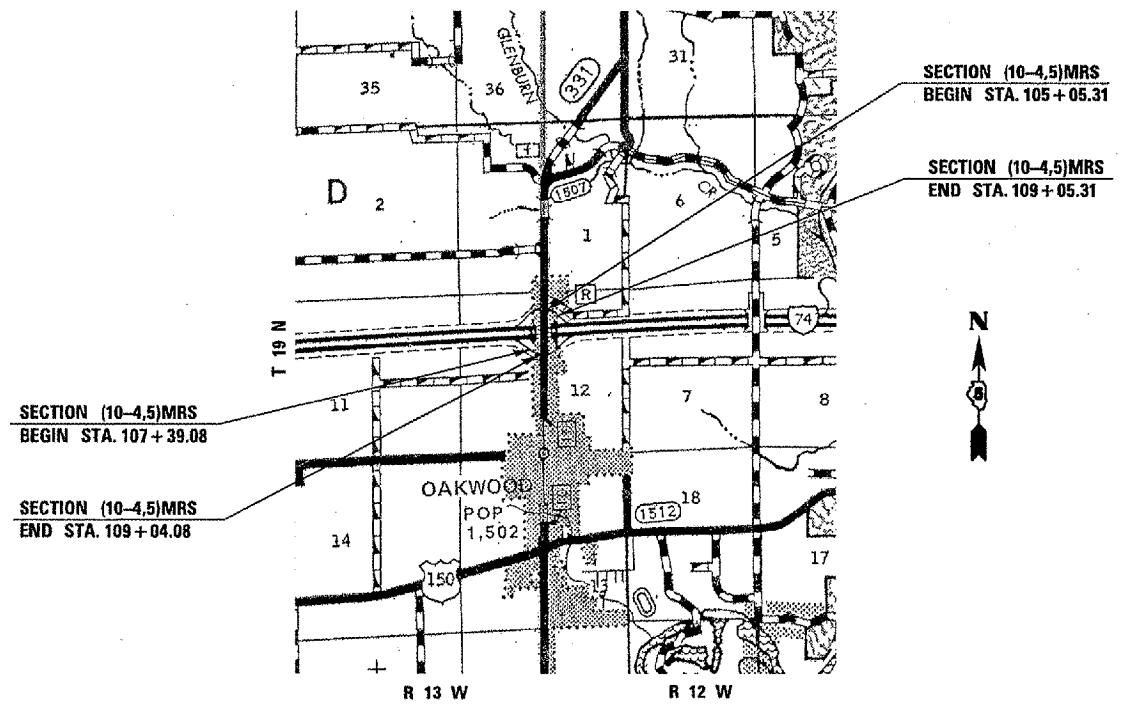
CURRENT ADT
RAMP "A" (EB) 2,250 (2006)
RAMP "D" (WB) 1,950 (2006)

DESIGN DESIGNATION
NA



FULL SIZE PLANS HAVE BEEN PREPARED USING STANDARD ENGINEERING SCALES. REDUCED SIZED PLANS WILL NOT CONFORM TO STANDARD SCALES. IN MAKING MEASUREMENTS ON REDUCED PLANS, THE ABOVE SCALES MAY BE USED.

J.U.L.I.E.
JOINT UTILITY LOCATION INFORMATION FOR EXCAVATION
1-800-892-0123



TOTAL LENGTH OF SECTION & PROJECT = 565.00 FEET = 0.107 MILES
NET LENGTH OF SECTION & PROJECT = 565.00 FEET = 0.107 MILES

STATE OF ILLINOIS
DEPARTMENT OF TRANSPORTATION
DIVISION OF HIGHWAYS

SUBMITTED *06/24/06*

Eric E. Heron
DEPUTY DIRECTOR OF HIGHWAYS, REGION ENGINEER

Milton R. Sees
INTERIM ENGINEER OF DESIGN AND ENVIRONMENT

Milton R. Sees
DIRECTOR OF HIGHWAYS, CHIEF ENGINEER

**PRINTED BY THE AUTHORITY
OF THE STATE OF ILLINOIS**

PROJECT ENGINEER: TIM BRANDENBURG (217)465-4181
SQUAD LEADER: MICHAEL LEROY
DESIGNER: DANA HENNESSY

DATE: 10/16/2006
PLOT SCALE: 43.2000
USER: NAME: dhennessy

CONTRACT NO. 70559