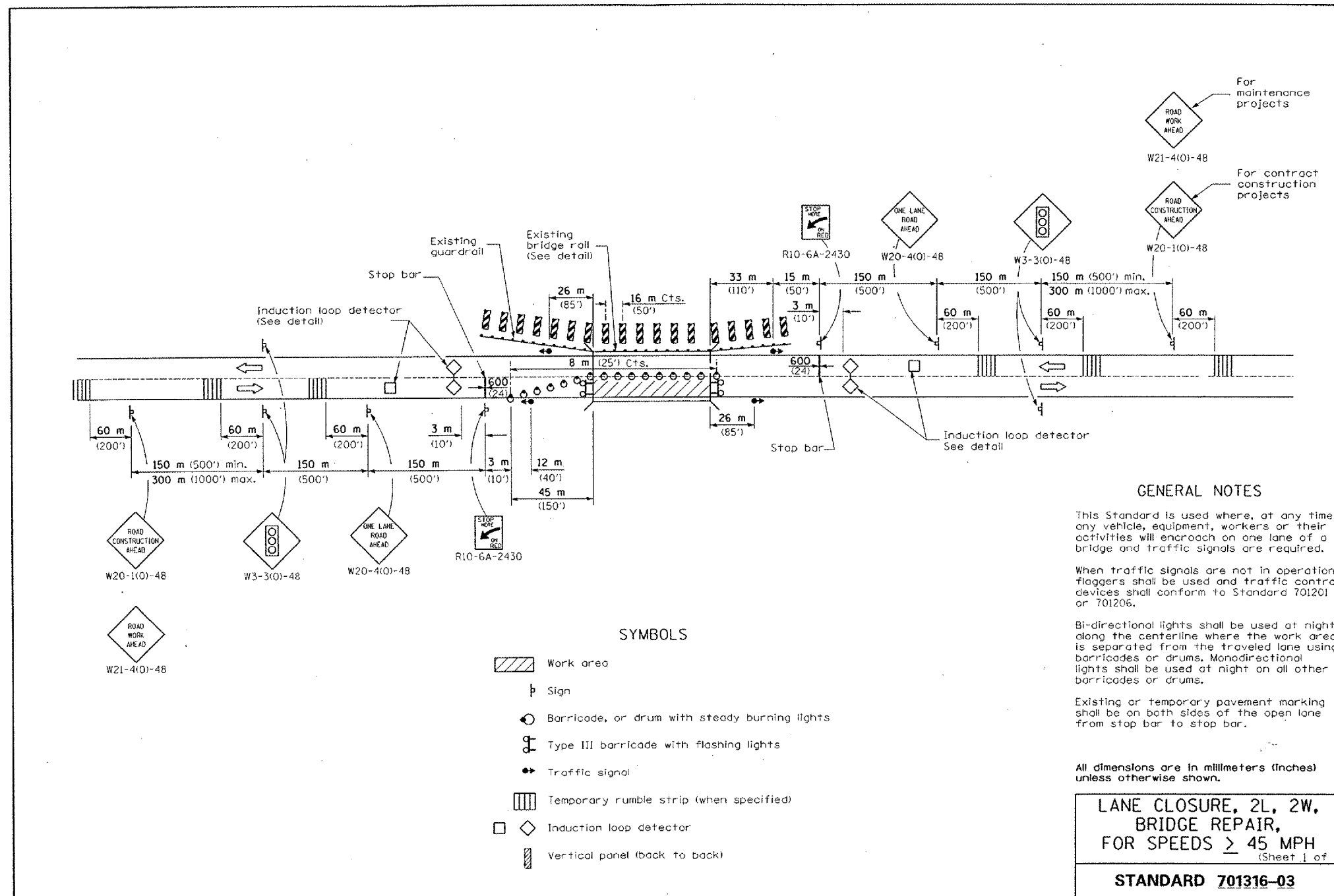


F.A.P. RTE.	SECTION	COUNTY	TOTAL SHEETS	SHEET NO.
645	(105BR) BR	MARSHALL	9	4
STA.		TO STA.		
FED. ROAD DIST. NO. 2		ILLINOIS FED. AID PROJECT		

# FOR INFORMATION ONLY



### GENERAL NOTES

This Standard is used where, at any time any vehicle, equipment, workers or their activities will encroach on one lane of a bridge and traffic signals are required.

When traffic signals are not in operation, flaggers shall be used and traffic control devices shall conform to Standard 701201 or 701206.

Bi-directional lights shall be used at night along the centerline where the work area is separated from the traveled lane using barricades or drums. Monodirectional lights shall be used at night on all other barricades or drums.

Existing or temporary pavement marking shall be on both sides of the open lane from stop bar to stop bar.

All dimensions are in millimeters (inches) unless otherwise shown.

**LANE CLOSURE, 2L, 2W,  
BRIDGE REPAIR,  
FOR SPEEDS > 45 MPH**  
(Sheet 1 of 2)

**STANDARD 701316-03**

### SYMBOLS

- Work area
- Sign
- Barricade, or drum with steady burning lights
- Type III barricade with flashing lights
- Traffic signal
- Temporary rumble strip (when specified)
- Induction loop detector
- Vertical panel (back to back)

PLOT DATE  
FILE NAME  
PLOT SCALE  
REFERENCE

REVISIONS	
NAME	DATE

ILLINOIS DEPARTMENT OF TRANSPORTATION

Traffic Control Standard  
FOR INFORMATION ONLY

SCALE: VERT.  
HORIZ.  
DATE 10-11-2006

DRAWN BY BTS  
CHECKED BY