

68696

F.A.P. RTE.	SECTION	COUNTY	TOTAL SHEETS	SHEET NO.
645	(105BR)I-1	MARSHALL	9	1

DESIGNER: **BRYON STRUNK**
 PHONE NO: (309) 671-3467

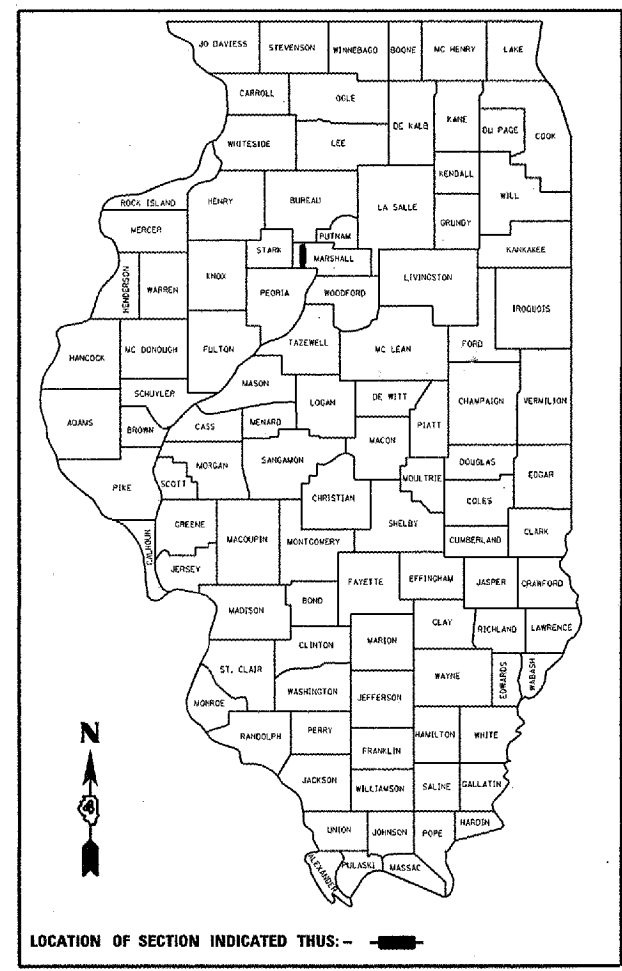
PROJECT ENGINEER: **JIM MILLER**
 PHONE NO: (309) 671-3451

STATE OF ILLINOIS
 DEPARTMENT OF TRANSPORTATION
 DIVISION OF HIGHWAYS

**PROPOSED
 HIGHWAY PLANS**

FAP ROUTE 645 (IL 17)
 SECTION (105BR)I-1
 MARSHALL COUNTY
 C-94-028-07

D-94-025-07



INDEX OF SHEETS:

1. COVER SHEET
2. COMMITMENTS AND GENERAL NOTES
3. SUMMARY OF QUANTITIES
- 4 - 5. TRAFFIC CONTROL STANDARD
FOR INFORMATION ONLY

BRIDGE PLANS INDEX SHEETS

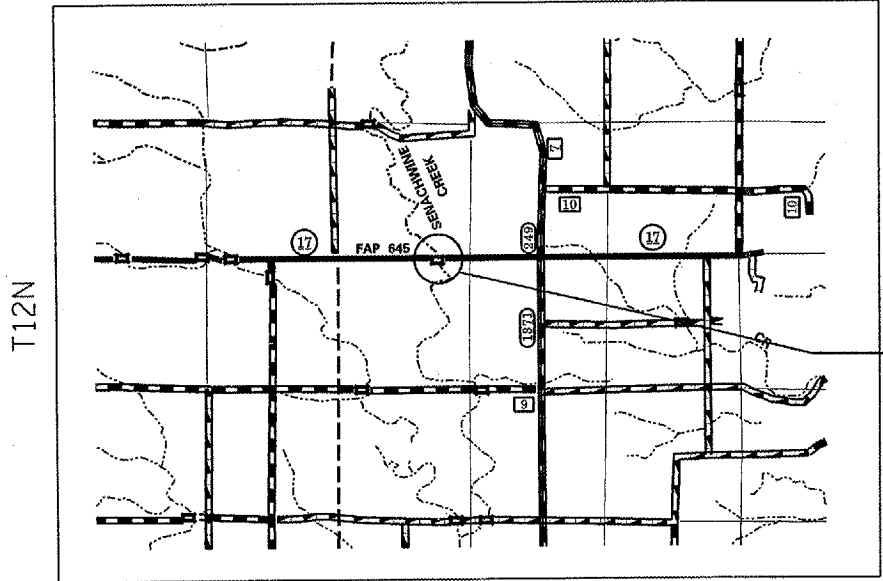
1. PLAN AND ELEVATION
2. BRIDGE REPAIRS
3. BRIDGE REPAIRS
4. BRIDGE REPAIRS DETAIL

DESIGN DESIGNATION
 SECTION (105BR)I-1
 MAJOR COLLECT (RUARL)
 ADT = 1000 (2005)
 PV = 82%
 SU = 11%
 MU = 7%

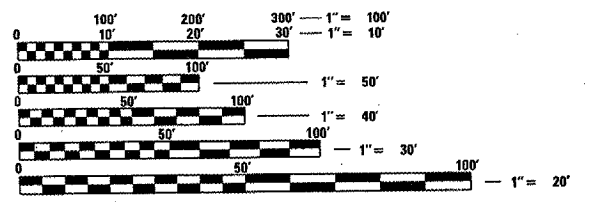
STANDARDS REQUIRED:

- 701101-01 701321-08
 701106-01 702001-06
 701201-02 701301-02
 704001-03

**QC/QA BITUMINOUS
 SUPERPAVE PROJECT**



EMERGENCY BEAM REPLACEMENT
 OF STRUCTURE CARRYING IL 17
 OVER SENACHWINE CREEK (SN 062-0016)
 3.5 MILES WEST OF SPARLAND



FULL SIZE PLANS HAVE BEEN PREPARED USING STANDARD ENGINEERING SCALES. REDUCED SIZED PLANS WILL NOT CONFORM TO STANDARD SCALES. IN MAKING MEASUREMENTS ON REDUCED PLANS, THE ABOVE SCALES MAY BE USED.

J.U.L.I.E.
 JOINT UTILITY LOCATION INFORMATION FOR EXCAVATION
 1-800-892-0123

STATE OF ILLINOIS
 DEPARTMENT OF TRANSPORTATION
 DIVISION OF HIGHWAYS

SUBMITTED OCT 30 20 06

[Signature]
 DISTRICT ENGINEER

December 20 06
[Signature]
 ENGINEER OF DESIGN AND ENVIRONMENT

December 20 06
[Signature]
 MILTON R. SEES
 DIRECTOR, DIVISION OF HIGHWAYS

**PRINTED BY THE AUTHORITY
 OF THE STATE OF ILLINOIS**