

F.A.P. RTE.	SECTION	COUNTY	TOTAL SHEETS	SHEET NO.
301	(2,3,4)RS	WINNEBAGO	46	30
STA.		TO STA.		
FED. ROAD DIST. NO.		ILLINOIS FED. AID PROJECT		

TYPICAL MEDIAN CROSSOVER CLOSURE

GENERAL NOTES

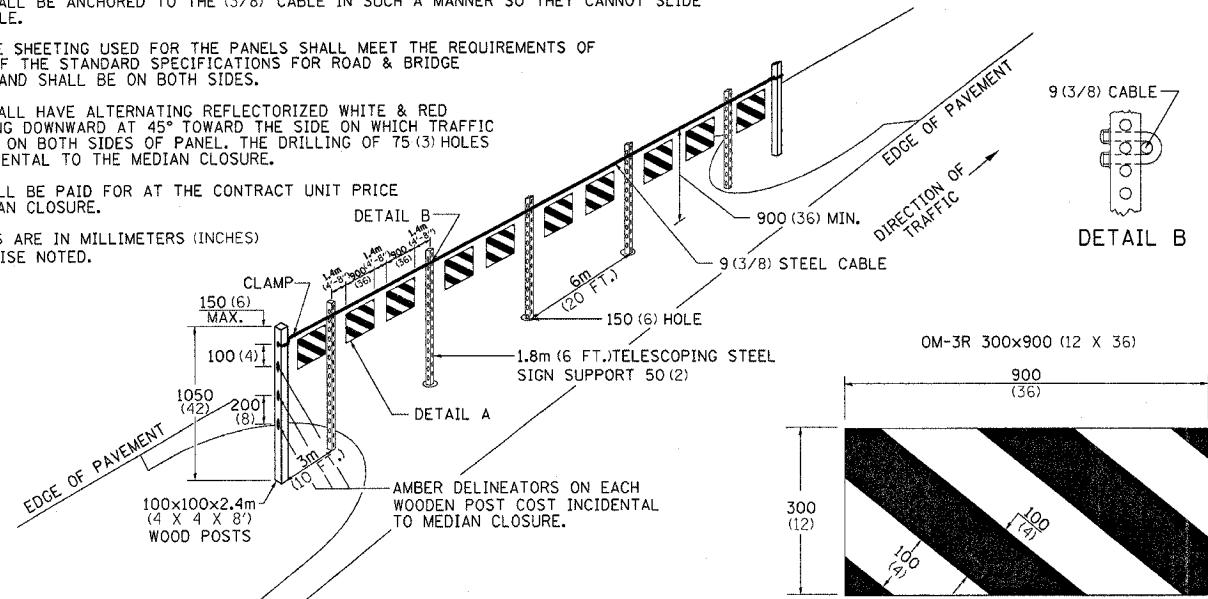
WOOD POSTS, CABLE, AND SIGN SUPPORTS SHALL BE IN ACCORDANCE WITH SECTION 634 & 636 OF THE STANDARD SPECIFICATIONS FOR ROAD AND BRIDGE CONSTRUCTION. THE PANELS SHALL BE ANCHORED TO THE (3/8) CABLE IN SUCH A MANNER SO THEY CANNOT SLIDE ALONG THE CABLE.

THE REFLECTIVE SHEETING USED FOR THE PANELS SHALL MEET THE REQUIREMENTS OF SECTION 1091 OF THE STANDARD SPECIFICATIONS FOR ROAD & BRIDGE CONSTRUCTION AND SHALL BE ON BOTH SIDES.

ALL PANELS SHALL HAVE ALTERNATING REFLECTORIZED WHITE & RED STRIPES SLOPING DOWNWARD AT 45° TOWARD THE SIDE ON WHICH TRAFFIC WILL PASS AND ON BOTH SIDES OF PANEL. THE DRILLING OF 75 (3) HOLES SHALL BE INCIDENTAL TO THE MEDIAN CLOSURE.

THIS WORK SHALL BE PAID FOR AT THE CONTRACT UNIT PRICE EACH FOR MEDIAN CLOSURE.

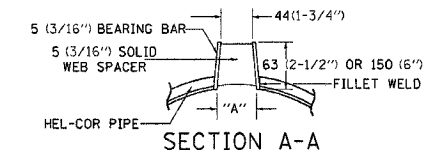
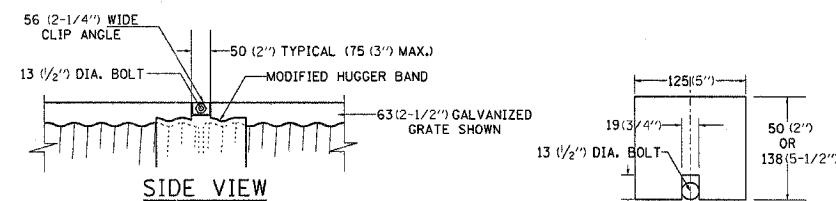
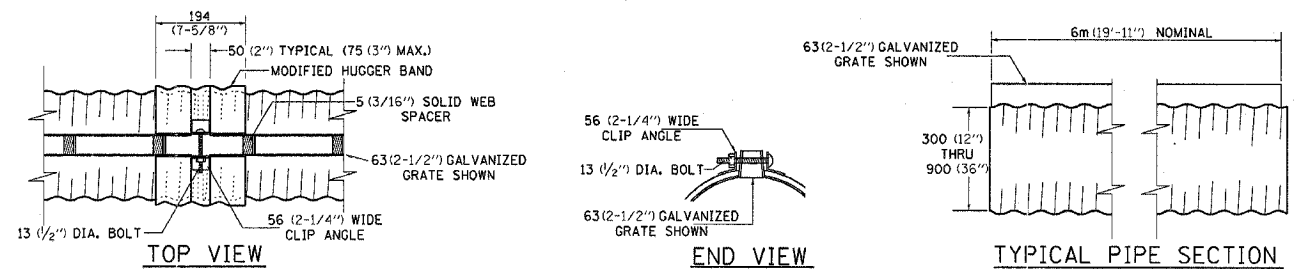
ALL DIMENSIONS ARE IN MILLIMETERS (INCHES) UNLESS OTHERWISE NOTED.



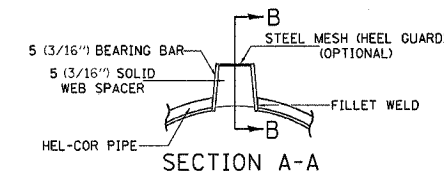
TYPICAL MEDIAN CROSSOVER CLOSURE 98.4

REVISED 10-10-06

SLOTTED DRAIN PIPE

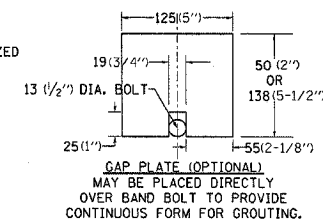


**SECTION A-A
STANDARD DETAIL**

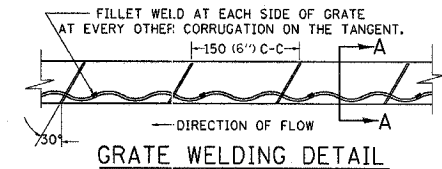


**SECTION A-A
DETAIL WITH MESH**

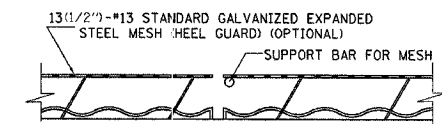
(TRAPEZOIDAL GALVANIZED GRATE SHOWN)



GAP PLATE (OPTIONAL) MAY BE PLACED DIRECTLY OVER BAND BOLT TO PROVIDE CONTINUOUS FORM FOR GROUTING.



GRATE WELDING DETAIL



SECTION B-B

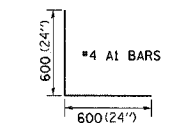
STANDARD SIZES		GRATE TYPE		"A"	
GAGE OF PIPE	DIAMETER OF PIPE	VERT	TRAP	VERT	TRAP
300 (12")	375 (15")	X	X	44 (1-3/4")	44 (1-3/4")
450 (18")	600 (24")	X	X	56 (2-1/4")	56 (2-1/4")
750 (30")	900 (36")	X	X	75 (3")	75 (3")
12	N.A.	N.A.	N.A.	N.A.	N.A.

SLOTTED DRAIN NOTES

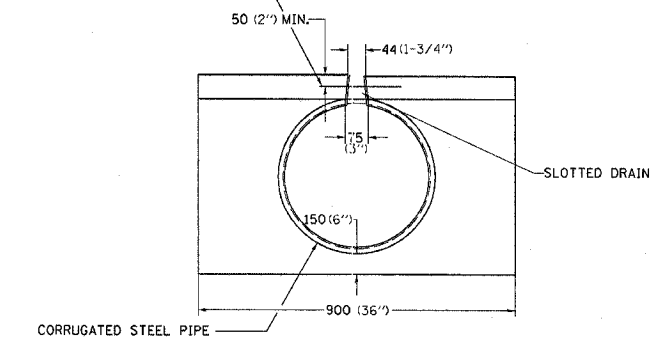
- GRATING IS AVAILABLE IN DEPTHS OF 63 (2-1/2") AND 150 (6").
- VERTICAL GRATING (STRAIGHT SIDES) WITH VERTICAL SPACERS IS ALSO AVAILABLE.
- FOR 150 (6") VERTICAL & TRAPZOIDAL REQUIREMENTS, THE SLOTTED DRAIN BAND MAY BE FURNISHED WITH THE 100 (4") TECHCO BAND ANGLE.
- DIMENSIONS ARE SUBJECT TO MANUFACTURING TOLERANCES.
- REFERENCE CONTECH BAND MANUAL DWG. NO. 1008466 FOR BAND DETAILS.

MANUFACTURING TOLERANCES

- VERTICAL BOW ± 10 (3/8")
- HORIZONTAL BOW ± 16 (5/8")
- TWIST ± 13 (1/2")



*#4A1 BARS AT 750 (30) CTS. COST INCLUDED IN COST OF SLOTTED DRAIN.



CORRUGATED STEEL PIPE

ALL DIMENSIONS ARE IN MILLIMETERS (INCHES) UNLESS OTHERWISE NOTED.

NOTES

CLASS SI CONCRETE SHALL BE USED THROUGHOUT.

THE SLOTTED DRAIN SHALL BE CORRUGATED PIPE CULVERT WITH INTEGRAL SLOTTED DRAINS. BEFORE PLACING THE CONCRETE ADJACENT TO THE PIPE, THE SLOT SHALL BE COVERED BY EITHER THIN, FLAT METAL SHEETING OR BY A BOARD NOTCHED TO FIT OVER THE GRATE BARS. THIS COVERING MUST FIT CLOSELY IN THE SLOT TO PREVENT ENTRY OF CONCRETE INTO THE PIPE. PAVING OVER THE SLOTTED DRAIN WILL THEN BE ONE CONTINUOUS OPERATION OVER THE PROTECTED DRAIN. THE PROTECTION FOR THE DRAIN SLOT SHALL THEN BE REMOVED. THE PIPE SHALL DRAIN INTO THE SIDE OF THE INLET. THE OPENING WHERE THE SLOT IS REMOVED SHALL BE COVERED TO PREVENT CONCRETE FROM ENTERING THE PIPE.

THE CORRUGATED STEEL PIPE USED IN THE SLOTTED DRAIN SHALL MEET THE REQUIREMENTS OF AASHTO M-36/ASTM A 760. THE CMP SHALL BE GALVANIZED OR ALUMINIZED STEEL TYPE 2. STEEL GRATING SHALL MEET THE GALVANIZING REQUIREMENTS OF AASHTO M-111. THIS WORK WILL BE PAID FOR AT THE CONTRACT UNIT PRICE PER FOOT FOR SLOTTED DRAIN PIPE, AND SHALL INCLUDE ELBOWS, DRILLING HOLES IN GRATING, SUPPLYING AND PLACING A1 BARS AND CONCRETE.

USE APPROVED END CAP TO PREVENT CONCRETE ENTRY INTO THE PIPE DURING GUTTER CONSTRUCTION ON THE UPSTREAM END OF PIPE.

REVISED 10-15-04