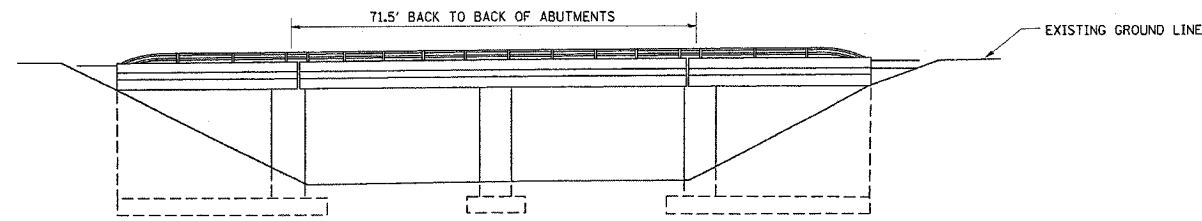
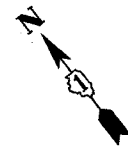


F.A. RTE.	SECTION	COUNTY	TOTAL SHEETS	SHEET NO.
VAR.	2003-067I	VARIOUS	23	10
STA.	TO STA.			
FED. ROAD DIST. NO.	ILLINOIS	FED. AID PROJECT		

62635



ELEVATION

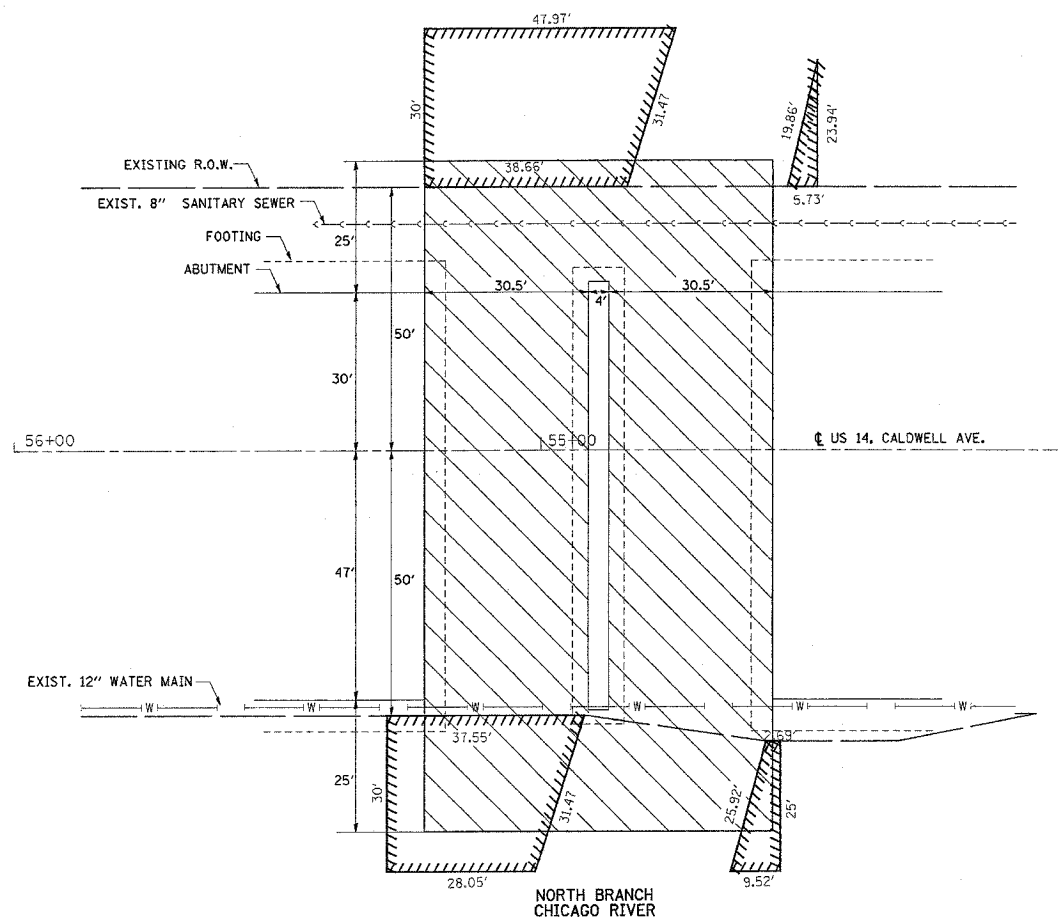


N. BR. CHICAGO RIVER FLOW

ACCESS TO THIS SITE IS LIMITED. THE CONTRACTOR SHALL ONLY ACCESS THIS SITE BY RAISING AND/OR LOWERING ALL EQUIPMENT AND MATERIAL OVER THE SIDES OF THE BRIDGE. THE CONTRACTOR WILL NOT BE ALLOWED OTHER ACCESS WITHOUT WRITTEN PERMISSION FROM THE ENGINEER. THIS WORK WILL NOT BE PAID FOR SEPARATELY, BUT SHALL BE CONSIDERED AS INCLUDED IN THE CONTRACT UNIT PRICES FOR THE CONSTRUCTION ITEMS INVOLVED AND NO ADDITIONAL COMPENSATION WILL BE ALLOWED

U.S.G.S. BM 49: NW CORNER OF SIDEWALK ON BRIDGE.
 EL. = 623.185
 OAKTON STREET OVER THE NORTH BRANCH OF THE CHICAGO RIVER

U.S.G.S. BM 50: OAKTON ST. AND CALDWELL AVE.
 CUT ON CORNER OF BASE LIGHT STANDARD ON N.W. CORNER OF INTERSECTION
 EL. = 623.64



PLAN

REVISIONS	
NAME	DATE

ILLINOIS DEPARTMENT OF TRANSPORTATION
STR. NO. 016-0928
U.S. 14 (CALDWELL AVE.) OVER
N. BRANCH CHICAGO RIVER
LOCATION 2
 SCALE: NONE
 DATE 10/25/2006
 DRAWN BY
 CHECKED BY