

STATE OF ILLINOIS
DEPARTMENT OF TRANSPORTATION

F.A.P. RTE.	SECTION	COUNTY	TOTAL SHEETS	SHEET NO.
304	100B-1BJR-1	MADISON	20	1
		ILLINOIS	CONTRACT NO. 76K30	

D-98-052-17



FOR INDEX OF SHEETS, SEE SHEET NO. 2

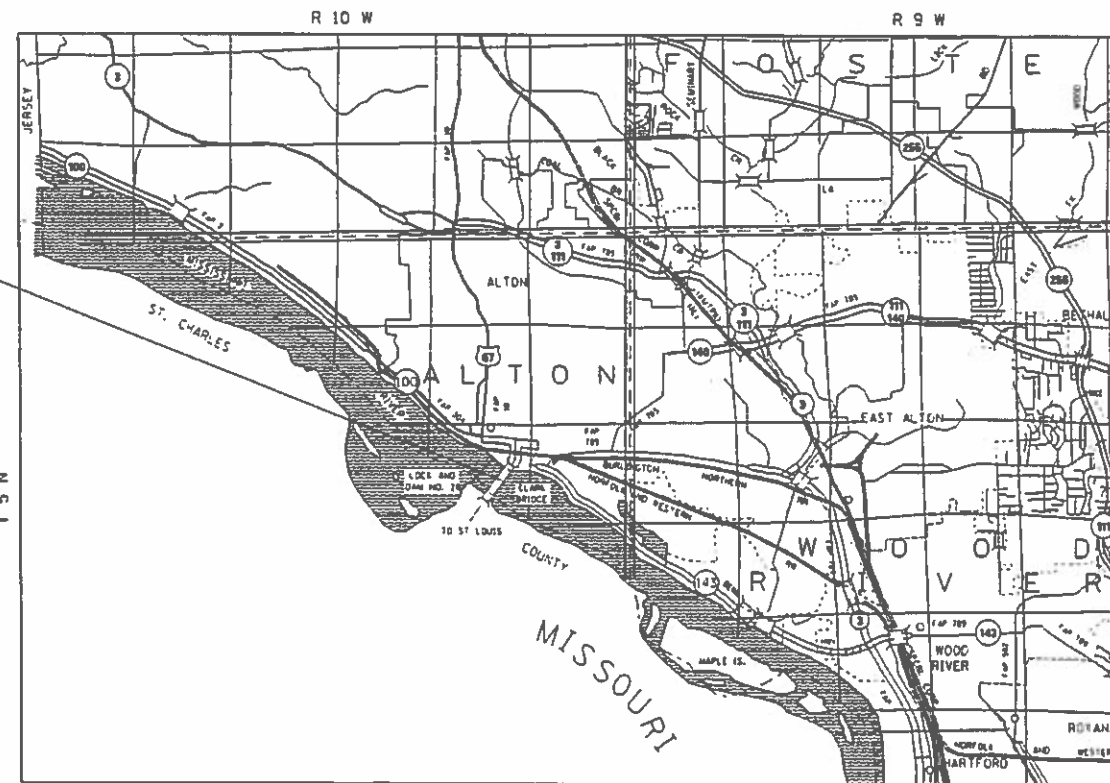
TRAFFIC DATA

2015 ADT = 26,800 (ACTUAL)
2018 ADT = 27,600 (ESTIMATED)
2038 ADT = 33,700 (ESTIMATED)
SU = 2.0%
MU = 2.1%

**PROPOSED
HIGHWAY PLANS**

FAP ROUTE 304 (US 67)
SECTION 100B-1BJR-1
PROJECT NHPP-PREY(875)
BRIDGE JOINT REPAIR
MADISON COUNTY

C-98-226-18



CLARK BRIDGE
JOINT REPAIRS
STA. 208+35.00
LATITUDE: +38.88156
LONGITUDE: -90.17861



FULL SIZE PLANS HAVE BEEN PREPARED USING STANDARD ENGINEERING SCALES. REDUCED SIZED PLANS WILL NOT CONFORM TO STANDARD SCALES. IN MAKING MEASUREMENTS ON REDUCED PLANS, THE ABOVE SCALES MAY BE USED.

J.U.L.I.E.
JOINT UTILITY LOCATION INFORMATION FOR EXCAVATION
1-800-892-0123
OR 811

PROJECT ENGINEER HERVE GELIN (618) 346-3179
PROJECT MANAGER BILLIE OWEN (618) 346-3209

CONTRACT NO. 76K30

NOT TO SCALE

GROSS LENGTH = 4,620.00 FT. = 0.875 MILE
NET LENGTH = 4,620.00 FT. = 0.875 MILE



STATE OF ILLINOIS
DEPARTMENT OF TRANSPORTATION

SUBMITTED *Oct 12, 2018*
Jeffrey E. Lawrence
REGIONAL ENGINEER

Dec 7, 2018
David L. Chaffin
ENGINEER OF DESIGN AND ENVIRONMENT

Dec 7, 2018
David L. Chaffin
DIRECTOR OF HIGHWAYS PROJECT IMPLEMENTATION

PRINTED BY THE AUTHORITY
OF THE STATE OF ILLINOIS

INDEX OF SHEETS

- 1 COVER
- 2 INDEX OF SHEETS, HIGHWAY STANDARDS, GENERAL NOTES, COMMITMENTS & PERTINENT INFORMATION
- 3-4 SUMMARY OF QUANTITIES
- 5-6 TYPICAL SECTIONS
- 7-10 PLAN VIEW
- 11 BIKE LANE CLOSURE SIGN PLAN
- 12 TRAFFIC CONTROL AND PROTECTION, (SPECIAL)
- 13-19 STRUCTURE PLANS
- 20 EXISTING STRUCTURE PLANS

HIGHWAY STANDARDS

- 000001-07 STANDARD SYMBOLS, ABBREVIATIONS AND PATTERNS
- 001001-02 AREAS OF REINFORCEMENT BARS
- 001006 DECIMAL OF AN INCH AND OF A FOOT
- 701423-10 LANE CLOSURE, MULTILANE, WITH BARRIER FOR SPEEDS > 45MPH TO 55MPH
- 701901-08 TRAFFIC CONTROL DEVICES
- 704001-08 TEMPORARY CONCRETE BARRIER

GENERAL NOTES

1. ILLINOIS STATE LAW REQUIRES A 48-HOUR NOTICE BE GIVEN TO ALL UTILITIES WITHIN THE PROJECT AREA BEFORE DIGGING. FIELD MARKING OF FACILITIES MAY BE OBTAINED BY CONTACTING J.U.L.I.E. OR FOR NON-MEMBERS, THE UTILITY COMPANY DIRECTLY. AGENCIES KNOWN TO HAVE FACILITIES WITHIN THE PROJECT AREA ARE AS FOLLOWS:
 - * CITY OF ALTON (SANITARY SEWER)
 - * CITY OF ALTON (LIGHTING)
 - * AMEREN ILLINOIS (GAS & ELECTRIC)
 - * AT&T (COMMUNICATIONS)
 - * CHARTER COMMUNICATIONS, INC. (CABLE TV)
 - * ILLINOIS AMERICAN WATER COMPANY (WATER)

MEMBERS OF J.U.L.I.E. CALL TOLL FREE (800) 892-0123 OR 811 AND ARE INDICATED BY *. NON-J.U.L.I.E. MEMBERS MUST BE NOTIFIED INDIVIDUALLY.
2. THE CONTRACTOR AND THE ENGINEER SHALL BE AWARE THAT NO SURVEY WAS PERFORMED FOR THIS PROJECT, THE STATIONING, TOPOGRAPHY AND QUANTITIES SHOWN IN THESE PLANS WERE CREATED USING MICROFILM AND FIELD MEASUREMENTS. ALL SHALL BE ASSUMED TO BE APPROXIMATE. THE CONTRACTOR SHALL VERIFY DIMENSIONS AND CONDITIONS IN THE FIELD PRIOR TO CONSTRUCTION AND ORDERING OF MATERIALS.
3. A QUANTITY OF 450 FEET OF TEMPORARY PAVEMENT MARKING - LINE 6" WHITE HAS BEEN INCLUDED IN THE PLANS FOR PAINTING THE BOTTOM 6" OF TEMPORARY CONCRETE BARRIER.
4. IF THE CONTRACTOR, FOR HIS CONSTRUCTION ACTIVITY, REMOVES TREES WITHIN THE RIGHT-OF-WAY LIMITS WHICH ARE NOT DESIGNATED ON THE PLANS FOR REMOVAL, I.E. IN ORDER TO GAIN ACCESS TO THE PROJECT SITE; IT WILL BE HIS RESPONSIBILITY TO REPLACE THE TREES AT A 1:1 RATIO. THE TREES WILL BE REPLACED WITH A 1 GALLON NATIVE ILLINOIS TREE SPECIES AND SHALL BE APPROVED BY THE ENGINEER. THE TREE REMOVAL AND TREE REPLACEMENT WILL BE AT THE CONTRACTOR'S EXPENSE, AND NO ADDITIONAL COMPENSATION WILL BE ALLOWED.

5. THE RESIDENT ENGINEER SHALL VERIFY THE EXISTENCE OF HIGHWAY LIGHTING AND/OR INTELLIGENT TRANSPORTATION SYSTEMS (I.T.S.) UTILITIES WITHIN THE PROJECT LIMITS. IF HIGHWAY LIGHTING AND/OR I.T.S. EXISTS WITHIN THE PROJECT LIMITS, AND IF THESE ITEMS REQUIRE LOCATING, THE CONTRACTOR SHALL BE DIRECTED TO DO SO ACCORDING TO SECTION 803 OF THE STANDARD SPECIFICATIONS. THIS WORK SHALL BE PAID FOR ACCORDING TO ARTICLE 109.04 OF THE STANDARD SPECIFICATIONS.
6. "ROAD CONSTRUCTION AHEAD" SIGNS SHALL BE PLACED AT EACH END OF THE PROJECT PLUS THE INTERSECTING SIDE ROADS, AND WILL BE CONSIDERED INCLUDED IN THE TRAFFIC CONTROL PAY ITEMS. ALL CONSTRUCTION SIGNS SHALL BE 48"X48" FLUORESCENT ORANGE.
7. FOUR CHANGEABLE MESSAGE BOARDS SHALL BE REQUIRED FOR THIS PROJECT. THEY SHALL BE PLACED TWO WEEKS PRIOR TO ANY LANE CLOSURE. THE CHANGEABLE MESSAGE BOARDS SHALL BE PLACED ACCORDING TO THE TRAFFIC CONTROL AND PROTECTION, (SPECIAL) SHEET SPECIFIED LOCATIONS AS DIRECTED BY THE ENGINEER.
8. THE DEPARTMENT STRONGLY ENCOURAGES THE PRIME CONTRACTOR AND THEIR APPROVED SUB-CONTRACTORS TO HIRE MINORITY, WOMEN AND DISADVANTAGED INDIVIDUALS FROM ITS FEDERALLY FUNDED HIGHWAY CONSTRUCTION CAREERS TRAINING PROGRAM (HCCTP) TO HELP MEET WORKFORCE AND TRAINEE GOALS. THIS PROGRAM IS TRAINING MINORITIES, WOMEN AND DISADVANTAGED INDIVIDUALS IN HIGHWAY CONSTRUCTION-RELATED SKILLS, E.G., MATH FOR THE TRADES, JOB READINESS, TECHNICAL SKILLS COURSEWORK (CARPENTRY, CONCRETE FLATWORK, BLUEPRINT READING, SITE PLANS, SITE WORK, TOOLS USE, ETC.) AND OSHA 10 HOUR CERTIFICATION, TO PREPARE THEM FOR A CAREER IN THE HIGHWAY CONSTRUCTION TRADES. GRADUATES ARE WELL-TRAINED AND READY TO BECOME PRODUCTIVE ENTRY-LEVEL CONSTRUCTION WORKERS. CONTACT THE DISTRICT 8 EEO OFFICE AT 618-346-3360 AND/OR THE HCCTP COORDINATOR AT 618-874-6528 TO LEARN MORE ABOUT THE PROGRAM AND FOR ASSISTANCE IN MEETING WORKFORCE AND TRAINEE GOALS.
9. EXISTING STRUCTURE PLANS ARE AVAILABLE FOR REVIEW IN THE DISTRICT OFFICE. CONTACT ROBERT HARBAUGH AT (618) 346-3195.

COMMITMENTS

NONE

PERTINENT INFORMATION

1. SIGNAGE SHALL BE PLACED AT THE BICYCLE TRAIL ON BOTH SIDES OF THE BRIDGE THAT THE BICYCLE TRAIL/ACCOMMODATION IS CLOSED DURING CONSTRUCTION.

THE CONTRACTOR SHALL NOTIFY THE FOLLOWING AGENCIES AT LEAST (TWO) 2 WEEKS PRIOR TO PROCEEDING WITH THE WORK:

- * MADISON COUNTY TRANSIT DISTRICT, FAX (618) 797-7547
- * MADISON COUNTY 911 EMERGENCY TELEPHONE SYSTEM BOARD, (618) 296-5911
- * DISTRICT 8 TRAFFIC MANAGEMENT CENTER, (618) 346-3233
- * MISSOURI DEPARTMENT OF TRANSPORTATION, (314) 453-1749, ATTN.: BETHERNY WILLIAMS
- * METRO EAST PARK AND RECREATION DISTRICT, (618) 346-4905
- * TRAILNET, (314) 455-6329
- * RIDE ILLINOIS, (630) 978-0583
- * GREAT RIVERS GREENWAY, (314) 436-7009

MODEL: Default FILE NAME: P:\11108\B&E\BID\NTEC\Illinois.gov\PWD\DOT\Documents\BID\DOT\Office\District 8\Projects\10076630\CADD\data\CAD\sheet\0876630-sht-gennote.dgn

USER NAME = harbaughrd	DESIGNED -	REVISED -	STATE OF ILLINOIS DEPARTMENT OF TRANSPORTATION	INDEX OF SHEETS, HIGHWAY STANDARDS, GENERAL NOTES, COMMITMENTS & PERTINENT INFORMATION	F.A.P. RTE.	SECTION	COUNTY	TOTAL SHEETS	SHEET NO.
DRAWN -	REVISED -	304			100B-1B1R-1	MADISON	20	2	
PLOT SCALE = 100.0000' / in.	CHECKED -	REVISED -			CONTRACT NO. 76K30				
PLOT DATE = 10/17/2018	DATE -	REVISED -			ILLINOIS FED. AID PROJECT				
				SCALE: NA	SHEET 1	OF 1	SHEETS	STA.	TO STA.

CODE NO.	ITEM	UNIT	TOTAL QUANTITY	CONSTRUCTION CODE	
				80% FEDERAL	100% MISSOURI
				20% STATE	BRIDGE
				BRIDGE	BRIDGE
				0047	0047
				060-0255	060-0255
50102400	CONCRETE REMOVAL	CU YD	21.7	10.85	10.85
50300255	CONCRETE SUPERSTRUCTURE	CU YD	21.7	10.85	10.85
50300300	PROTECTIVE COAT	SQ YD	38	19	19
50800205	REINFORCEMENT BARS, EPOXY COATED	POUND	4880	2440	2440
50800515	BAR SPLICERS	EACH	28	14	14
67100100	MOBILIZATION	L SUM	1	0.5	0.5
70107005	PAVEMENT MARKING BLACKOUT TAPE, 5"	FOOT	520	260	260
70107025	CHANGEABLE MESSAGE SIGN	CAL DA	224	112	112
70300150	SHORT TERM PAVEMENT MARKING REMOVAL	SQ FT	217	108.5	108.5
70300240	TEMPORARY PAVEMENT MARKING - LINE 6"	FOOT	450	225	225
70400100	TEMPORARY CONCRETE BARRIER	FOOT	450	225	225
70400200	RELOCATE TEMPORARY CONCRETE BARRIER	FOOT	450	225	225
70600270	IMPACT ATTENUATORS, TEMPORARY (FULLY REDIRECTIVE, WIDE), TEST LEVEL 3	EACH	2	1	1
70600330	IMPACT ATTENUATORS, RELOCATE (FULLY REDIRECTIVE), TEST LEVEL 3	EACH	2	1	1

MODEL: MODELNAME\$ FILE NAME: p:\11184818\BID\NTES\Illinois.gov\FWD\DOT\Documents\DOT Office\District B\Projects\087630\CADD\data\CAD\sheet\087630-ph-500.dgn

REV. - MS

USER NAME = harbaughrd	DESIGNED -	REVISED -
	DRAWN -	REVISED -
PLOT SCALE = 100.0000' / in.	CHECKED -	REVISED -
PLOT DATE = 11/8/2018	DATE -	REVISED -

**STATE OF ILLINOIS
DEPARTMENT OF TRANSPORTATION**

SUMMARY OF QUANTITIES

SCALE: NA SHEET 1 OF 2 SHEETS STA. TO STA.

F.A.P. RTE.	SECTION	COUNTY	TOTAL SHEETS	SHEET NO.
304	100B-1BJR-1	MADISON	20	3
CONTRACT NO. 76K30				
ILLINOIS FED. AID PROJECT				

CODE NO.	ITEM	UNIT	TOTAL QUANTITY	CONSTRUCTION CODE	
				80% FEDERAL	100% MISSOURI
				20% STATE	BRIDGE
				BRIDGE	BRIDGE
				0047	0047
				060-0255	060-0255
* 78009004	MODIFIED URETHANE PAVEMENT MARKING - LINE 4"	FOOT	36	18	18
Z0018800	DRAINAGE SYSTEM	L SUM	1	0.5	0.5
Z0034396	MODULAR EXPANSION JOINT 12"	FOOT	87	43.5	43.5
X7010216	TRAFFIC CONTROL AND PROTECTION, (SPECIAL)	L SUM	1	0.5	0.5
Z0001905	STRUCTURAL STEEL REPAIR	POUND	10	5	5
Z0012754	STRUCTURAL REPAIR OF CONCRETE (DEPTH EQUAL TO OR LESS THAN 5 INCHES)	SQ FT	210	105	105
∅ Z0076600	TRAINEES	HOUR	1000	1000	
∅ Z0076604	TRAINEES TRAINING PROGRAM GRADUATE	HOUR	1000	1000	

* SPECIALTY ITEM

MODEL: \$MODELNAME
FILE: Name: P:\11108\EBID\NTEC\Illinois.gov\PWIDOT\Documents\DOT_Offices\District 8\Projects\0876630\CADDData\CAD\Sheets\0876630-sht-500.dgn

REV. - MS

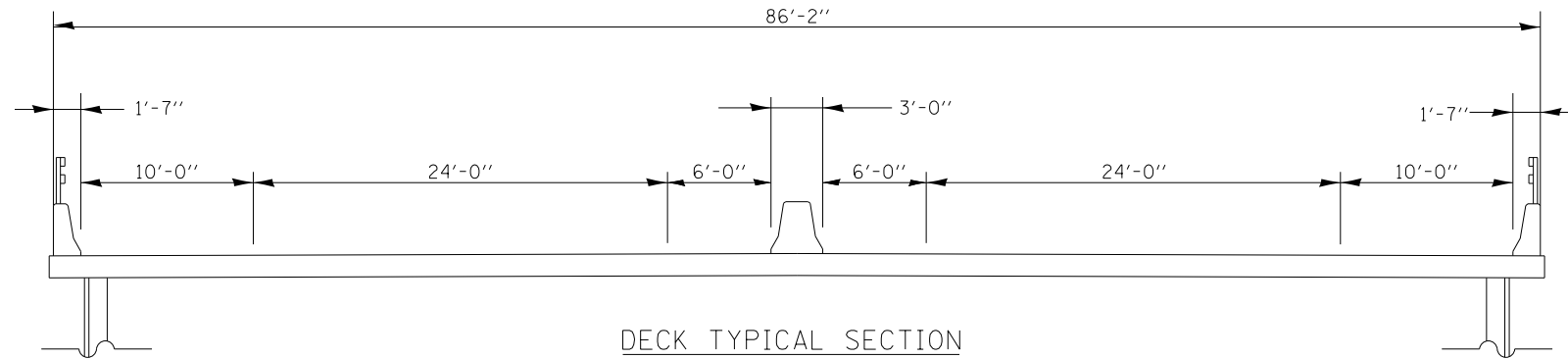
USER NAME = harbaughrd	DESIGNED -	REVISED -
	DRAWN -	REVISED -
PLOT SCALE = 100.0000 ' / in.	CHECKED -	REVISED -
PLOT DATE = 11/8/2018	DATE -	REVISED -

**STATE OF ILLINOIS
DEPARTMENT OF TRANSPORTATION**

SUMMARY OF QUANTITIES

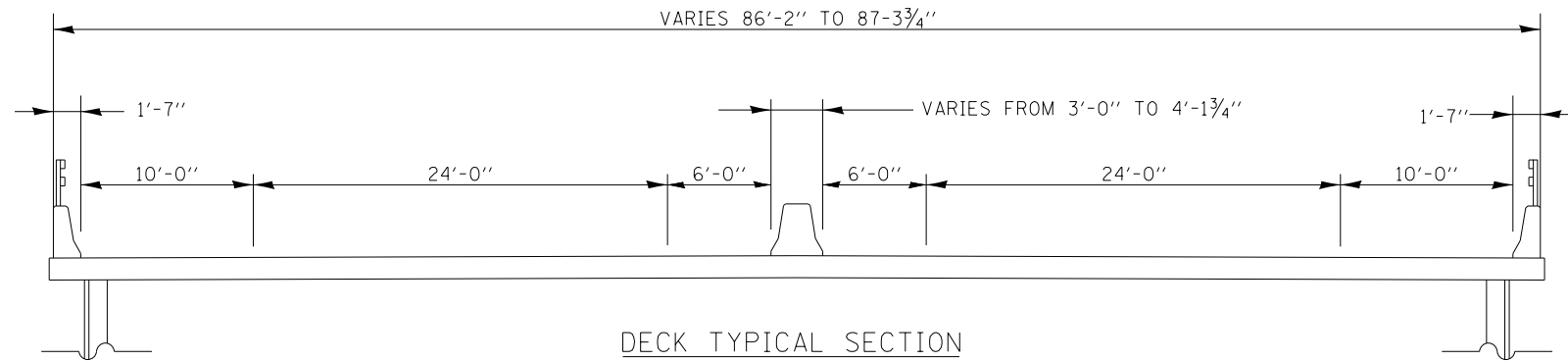
SCALE: NA SHEET 2 OF 2 SHEETS STA. TO STA.

F.A.P. RTE.	SECTION	COUNTY	TOTAL SHEETS	SHEET NO.
304	100B-1BJR-1	MADISON	20	4
CONTRACT NO. 76K30				
ILLINOIS FED. AID PROJECT				



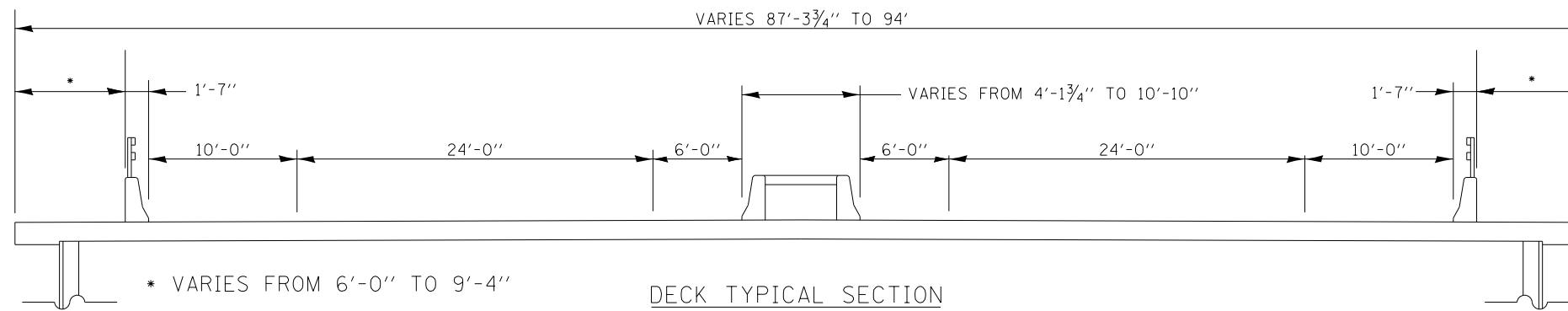
DECK TYPICAL SECTION

STA. 208+35.00 TO STA. 224+43.04
 STA. 237+97.12 TO STA. 250+62.00



DECK TYPICAL SECTION

STA. 224+43.04 TO STA. 225+21.50
 STA. 237+18.50 TO STA. 237+97.12



DECK TYPICAL SECTION

STA. 225+21.50 TO STA. 227+22.00
 STA. 235+18.00 TO STA. 237+18.50

MODEL: \\MODELNAME
 FILE NAME: P:\11108\EBID\NTEC\Illinois\gov\PIV\DOT\Documents\DOT Office\DIR\et 8\Projects\0876630\CADD\DATA\CAD\Sheet\0876630-eh-1-tp1ca.dgn

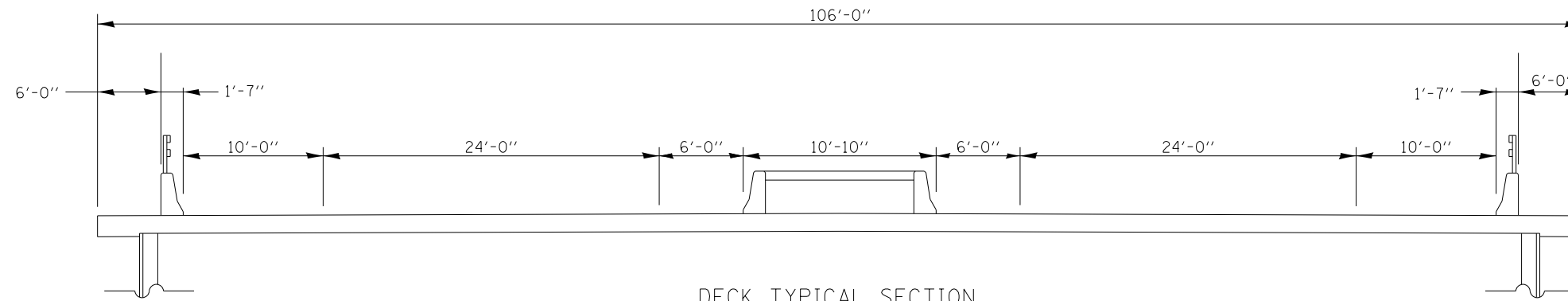
USER NAME = harbaughrd	DESIGNED -	REVISED -
	DRAWN -	REVISED -
PLOT SCALE = 100.0000' / in.	CHECKED -	REVISED -
PLOT DATE = 10/5/2018	DATE -	REVISED -

**STATE OF ILLINOIS
 DEPARTMENT OF TRANSPORTATION**

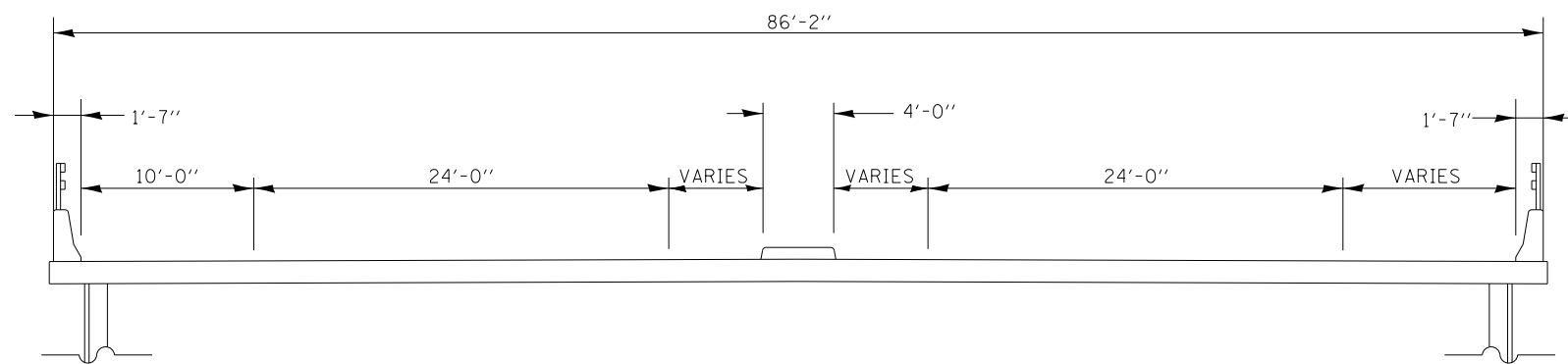
TYPICAL SECTIONS

SCALE: NA SHEET 1 OF 2 SHEETS STA. TO STA.

F.A.P. RTE.	SECTION	COUNTY	TOTAL SHEETS	SHEET NO.
304	100B-1BJR-1	MADISON	20	5
CONTRACT NO. 76K30				
ILLINOIS FED. AID PROJECT				



DECK TYPICAL SECTION
STA. 227+22.00 TO STA. 235+18.00



DECK TYPICAL SECTION
STA. 250+65.00 TO STA. 254+55

MODEL: s:\MODELNAME
FILE NAME: p:\u108\EBID\NTEC\Illinois.gov\PIV\DOT\Documents\DOT Office\Director\Projects\0876630\CADD\data\CAD\sheet\0876630\sh-1\typical.dgn

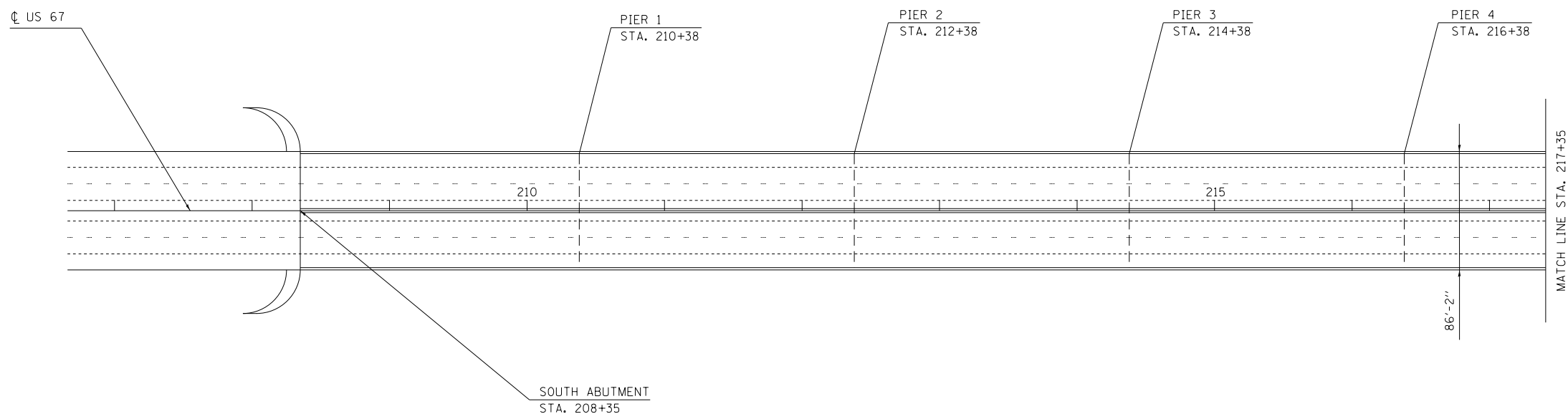
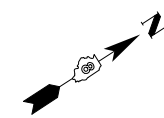
USER NAME = harbaughrd	DESIGNED -	REVISED -
	DRAWN -	REVISED -
PLOT SCALE = 100.0000' / in.	CHECKED -	REVISED -
PLOT DATE = 10/5/2018	DATE -	REVISED -

STATE OF ILLINOIS
DEPARTMENT OF TRANSPORTATION

TYPICAL SECTIONS

SCALE: NA SHEET 1 OF 2 SHEETS STA. TO STA.

F.A.P. RTE.	SECTION	COUNTY	TOTAL SHEETS	SHEET NO.
304	100B-1BJR-1	MADISON	20	6
CONTRACT NO. 76K30				
ILLINOIS FED. AID PROJECT				



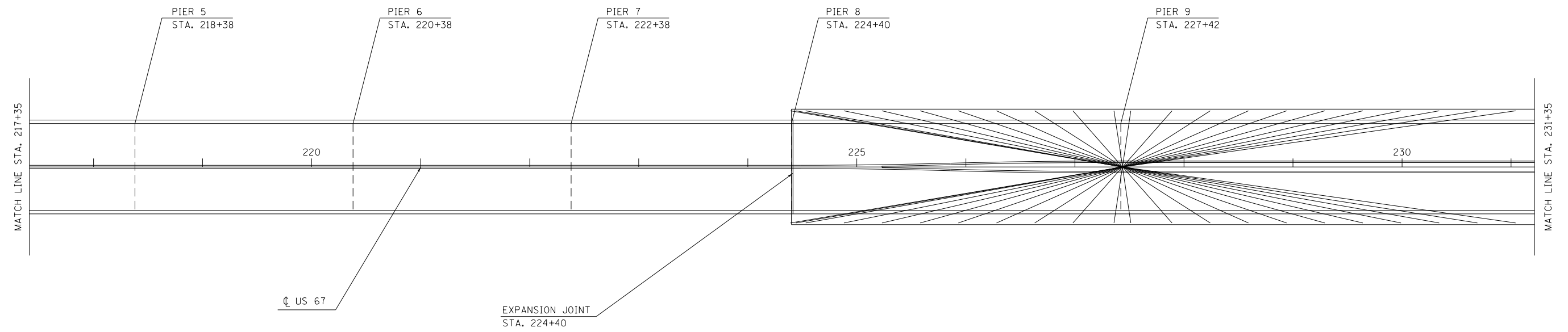
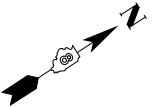
MODEL: \\MODELNAME
 FILE NAME: P:\1108\EBID\NTEC\Illinois\gov\PI\DOT\Documents\DOT Office\Director\Projects\0876630\CADDData\CAD\Sheet\0876630-15-Plan.dgn

USER NAME = harbaughrd	DESIGNED -	REVISED -
	DRAWN -	REVISED -
PLOT SCALE = 100.0000 ' / in.	CHECKED -	REVISED -
PLOT DATE = 10/5/2018	DATE -	REVISED -

STATE OF ILLINOIS
DEPARTMENT OF TRANSPORTATION

PLAN VIEW			
SCALE: NA	SHEET 1	OF 4 SHEETS	STA. 207+00 TO STA. 217+35

F.A.P. RTE.	SECTION	COUNTY	TOTAL SHEETS	SHEET NO.
304	100B-1BJR-1	MADISON	20	7
CONTRACT NO. 76K30				
ILLINOIS FED. AID PROJECT				



MODEL: s:\MODELNAME
 FILE NAME: p:\u0084E8D1D1E\Illinois\gov\PIV\DOT\Documents\DOT Offices\Director\Projects\0876630\CADD\DATA\CAD\PIERS\0876630\plan.dgn

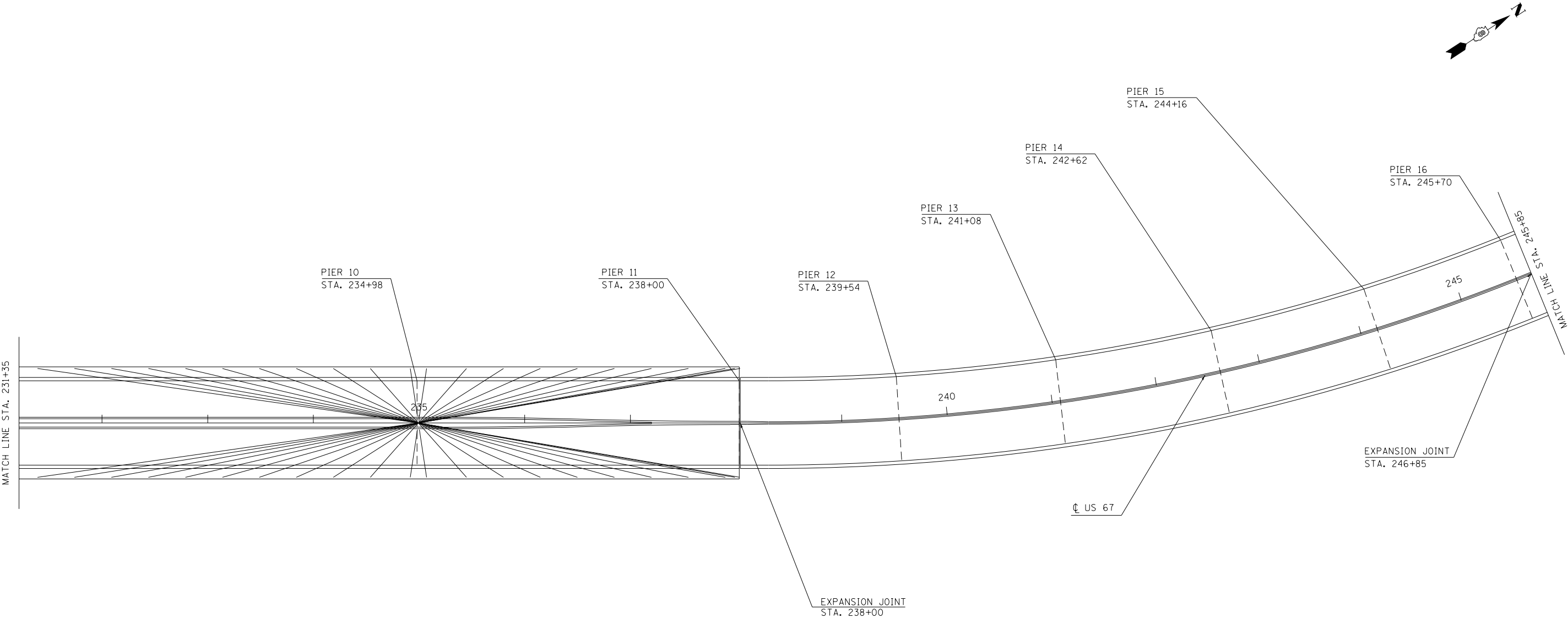
USER NAME = harbaughrd	DESIGNED -	REVISED -
	DRAWN -	REVISED -
PLOT SCALE = 100.0000' / in.	CHECKED -	REVISED -
PLOT DATE = 10/5/2018	DATE -	REVISED -

STATE OF ILLINOIS
DEPARTMENT OF TRANSPORTATION

PLAN VIEW

SCALE: NA SHEET 2 OF 4 SHEETS STA. 217+35 TO STA. 231+35

F.A.P. RTE.	SECTION	COUNTY	TOTAL SHEETS	SHEET NO.
304	1000B-1BJR-1	MADISON	20	8
CONTRACT NO. 76K30				
ILLINOIS FED. AID PROJECT				



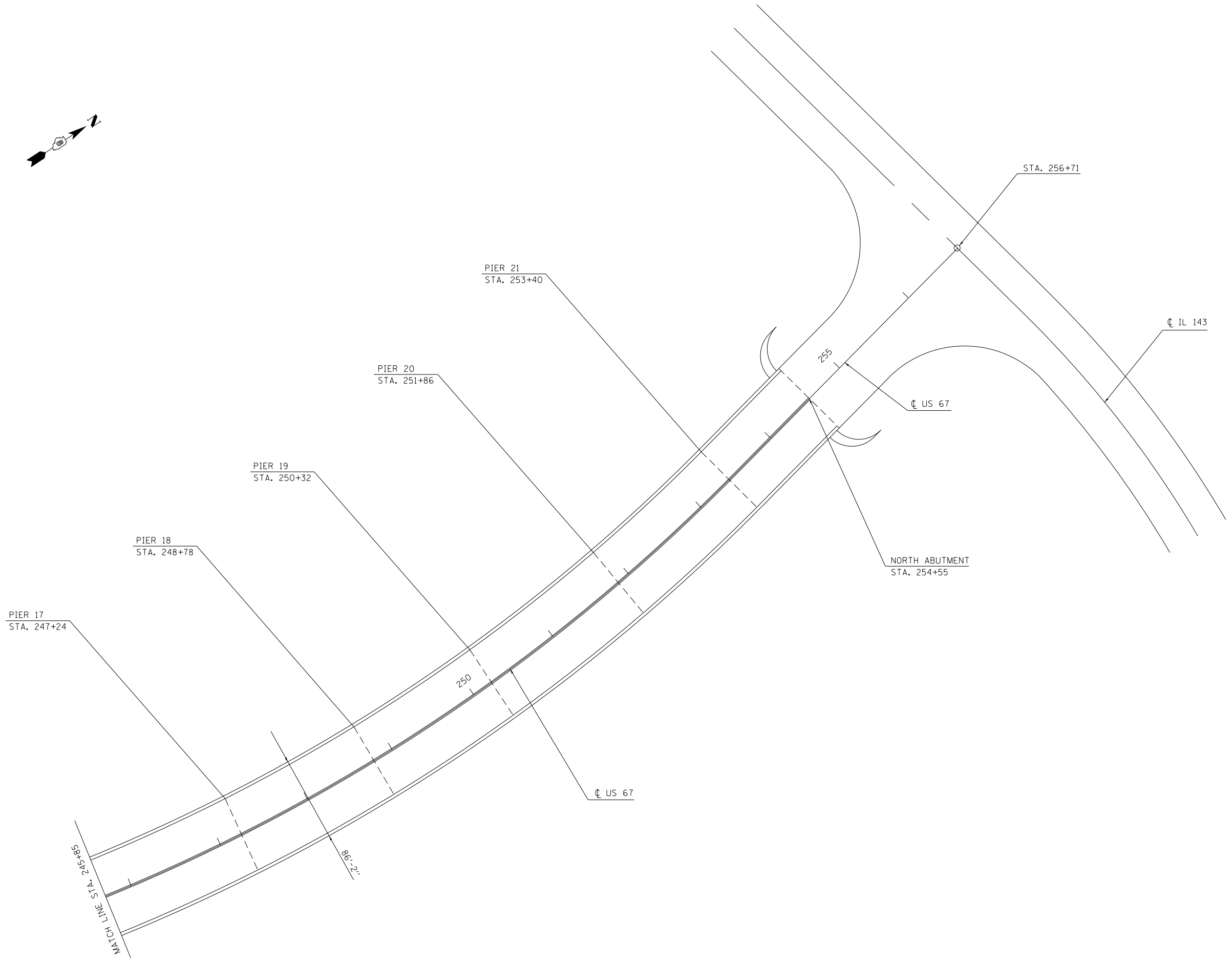
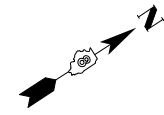
MODEL: \\MODELNAME
 FILE NAME: P:\ILLINOIS\BID\NTEC\Illinois\gov\PI\DOT\Documents\DOT_Offices\Director\Projects\0876630\CADD\data\CAD\sheet\0876630\p1b.dgn

USER NAME = harbaughrd	DESIGNED -	REVISED -
	DRAWN -	REVISED -
PLOT SCALE = 100,0000' / in.	CHECKED -	REVISED -
PLOT DATE = 10/5/2018	DATE -	REVISED -

**STATE OF ILLINOIS
 DEPARTMENT OF TRANSPORTATION**

PLAN VIEW			
SCALE: NA	SHEET 3	OF 4 SHEETS	STA. 231+35 TO STA. 245+85

F.A.P. RTE.	SECTION	COUNTY	TOTAL SHEETS	SHEET NO.
304	100B-1BJR-1	MADISON	20	9
CONTRACT NO. 76K30				
ILLINOIS FED. AID PROJECT				



MODEL: s:\MODELNAME
FILE NAME: p:\11108\EBID\NTEC\Illinois\gov\PIWDOT\Documents\DOT_Offices\Director\B\Projects\0876630\CADDData\CAD\Sheet\0876630\p1b-plan.dgn

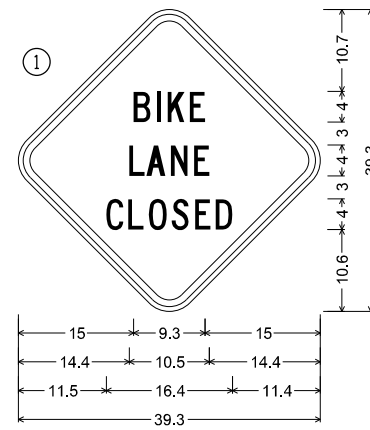
USER NAME = harbaughrd	DESIGNED -	REVISED -
	DRAWN -	REVISED -
PLOT SCALE = 100,0000' / in.	CHECKED -	REVISED -
PLOT DATE = 10/5/2018	DATE -	REVISED -

**STATE OF ILLINOIS
DEPARTMENT OF TRANSPORTATION**

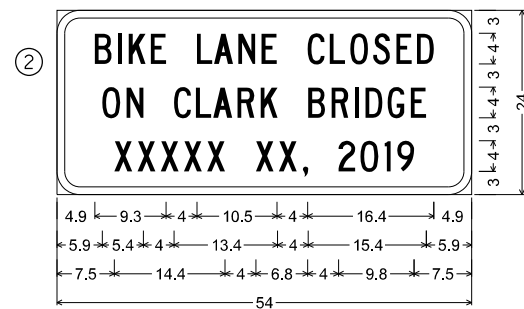
PLAN VIEW			
SCALE: NA	SHEET 4	OF 4 SHEETS	STA. 245+85 TO STA. 256+71

F.A.P. RTE.	SECTION	COUNTY	TOTAL SHEETS	SHEET NO.
304	100B-1BJR-1	MADISON	20	10
CONTRACT NO. 76K30				
		ILLINOIS	FED. AID PROJECT	

SIGNS FOR BIKE LANE CLOSURE



30.0" across sides 3.8" Radius, 0.9" Border, 0.6" Indent, Black on Orange;
[BIKE] C; [LANE] C; [CLOSED] C;



3.0" Radius, 1.0" Border, Black on Orange;
[BIKE LANE CLOSED] C; [ON CLARK BRIDGE] C;
[XXXXX XX, 2019] C;

NOTES FOR BIKE LANE CLOSURE

1. ALL SIGNS SHALL BE CONTRACTOR PROVIDED.
2. THE CONTRACTOR SHALL NOTIFY THE TRAIL AGENCIES TWO WEEKS PRIOR TO THE BIKE LANE CLOSURE. SEE PERTINENT INFORMATION FOR LIST OF CONTACTS.
3. BIKE LANE CLOSURE TRAFFIC CONTROL SHALL BE PAID FOR AS TRAFFIC CONTROL AND PROTECTION, (SPECIAL).



MODEL: \\MODELNAME
FILE NAME: P:\PROJECTS\76K30\CADD\DATA\CAD\PROJECTS\76K30\76K30-11-PLAN.dgn

USER NAME = harbaughrd	DESIGNED -	REVISED -
	DRAWN -	REVISED -
PLOT SCALE = 100,0000 ' / in.	CHECKED -	REVISED -
PLOT DATE = 10/18/2018	DATE -	REVISED -

STATE OF ILLINOIS
DEPARTMENT OF TRANSPORTATION

BIKE LANE CLOSURE SIGNING PLAN

SCALE: NA SHEET 1 OF 1 SHEETS STA. TO STA.

F.A.P. RTE.	SECTION	COUNTY	TOTAL SHEETS	SHEET NO.
304	100B-1BJR-1	MADISON	20	11
CONTRACT NO. 76K30				
ILLINOIS FED. AID PROJECT				

NOTES

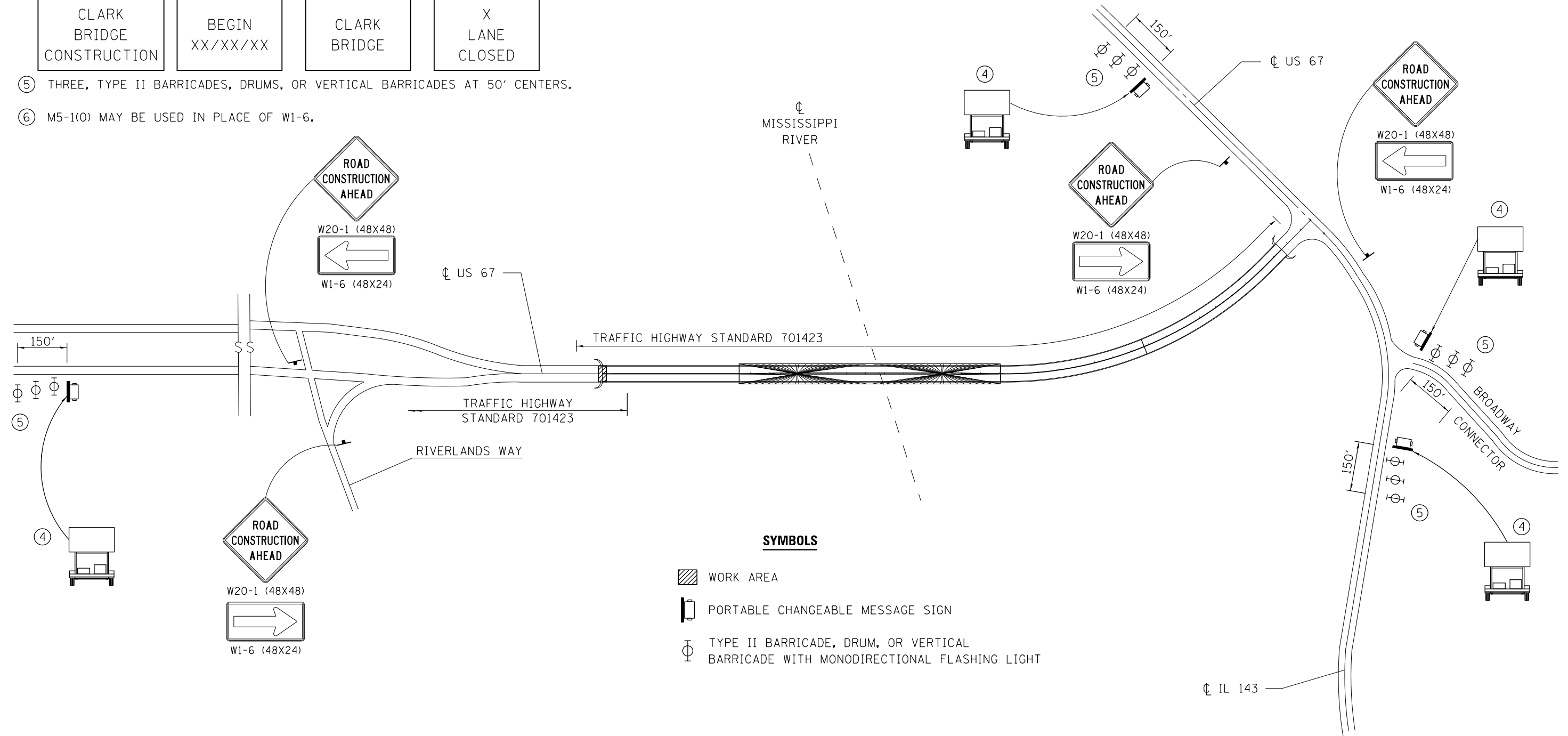
- ① LOCATIONS OF MESSAGE BOARDS IN ILLINOIS TO BE COORDINATED WITH THE RESIDENT ENGINEER.
- ② LOCATION OF MESSAGE BOARD IN MISSOURI TO BE COORDINATED WITH THE RESIDENT ENGINEER AND BY THE MISSOURI DEPARTMENT OF TRANSPORTATION.
- ③ MESSAGE BOARDS SHALL BE ERECTED 2 WEEKS PRIOR TO START OF JOINT REPLACEMENT AND WILL BE PAID FOR SEPARATELY.
- ④ THE MESSAGE BOARD SHALL BE USED TO DISPLAY STATUS OF LANES WITHIN THE PROJECT. THE PRIMARY MESSAGES SHALL BE:

PRIOR TO CONSTRUCTION

DURING CONSTRUCTION



- ⑤ THREE, TYPE II BARRICADES, DRUMS, OR VERTICAL BARRICADES AT 50' CENTERS.
- ⑥ M5-1(O) MAY BE USED IN PLACE OF W1-6.

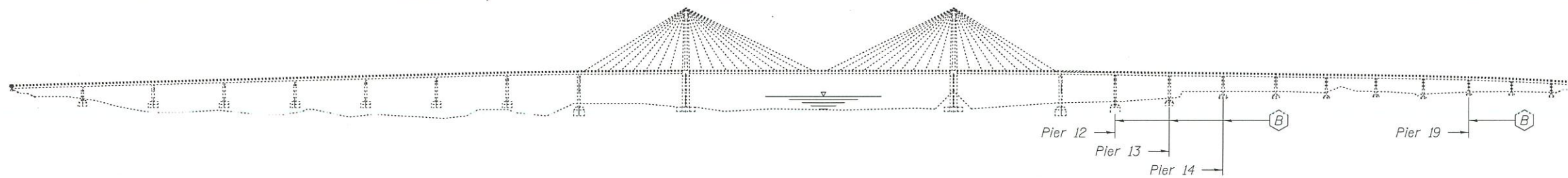


SYMBOLS

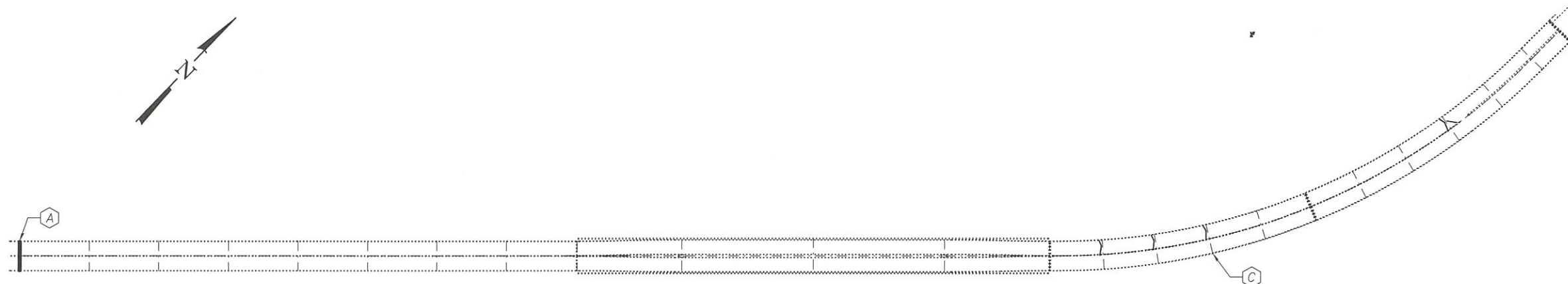
- [Hatched Box] WORK AREA
- [Message Sign Symbol] PORTABLE CHANGEABLE MESSAGE SIGN
- [Barricade Symbol] TYPE II BARRICADE, DRUM, OR VERTICAL BARRICADE WITH MONODIRECTIONAL FLASHING LIGHT

FILE NAME =	USER NAME = harbaughrd	DESIGNED -	REVISED -	STATE OF ILLINOIS DEPARTMENT OF TRANSPORTATION	TRAFFIC CONTROL AND PROTECTION, (SPECIAL)	F.A.P. RTE.	SECTION	COUNTY	TOTAL SHEETS	SHEET NO.
pw:\IL\084EBIDINTEG.illinois.gov\PI\DOT\Documents\DOT Offices\District 8\Projects\0875\Drawings\EA0\sheets\0876K30-shr-staging\REVISED -	DRAWN	CHECKED -	REVISED -			304	100B-1BJR-1	MADISON	20	12
PLOT SCALE = 100.0000' / 1in.		DATE -				CONTRACT NO. 76K30				
PLOT DATE = 10/17/2018						FED. ROAD DIST. NO.	ILLINOIS	FED. AID PROJECT		

SCALE: NA SHEET NO. 1 OF 1 SHEETS STA. TO STA.

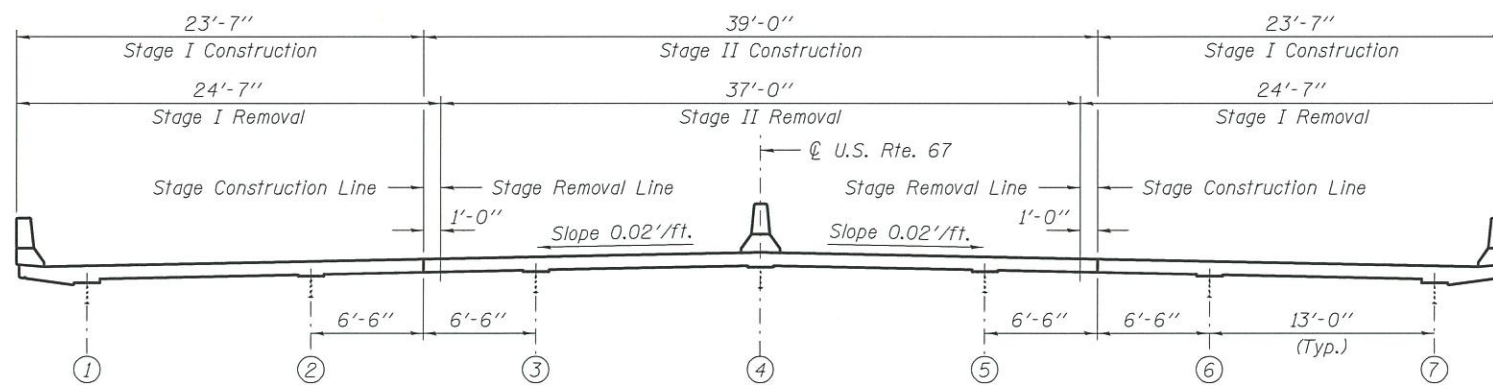


ELEVATION



PLAN

- (A) Remove and replace Modular Joint
- (B) Install Drainage System
- (C) Structural Repair of Concrete (See sheet 5 of 7)



CROSS SECTION
(Looking North)

GENERAL NOTES

All structural steel shall conform to AASHTO Classification M-270 Gr. 36, unless otherwise noted.
 Reinforcement bars designated (E) shall be epoxy coated.
 Fasteners shall be high strength bolts. Bolts $7/8''\phi$, open holes $15/16''\phi$, unless otherwise noted.
 Plan dimensions and details relative to existing plans are subject to nominal construction variations. The Contractor shall field verify existing dimensions and details affecting new construction and make necessary approved adjustments prior to construction or ordering of materials. Such variations shall not be cause for additional compensation for a change in scope of the work, however, the Contractor will be paid for the quantity actually furnished at the unit price bid for the work.
 Existing reinforcement bars extending into the removal area shall be cleaned, straightened and incorporated into the new construction. Any reinforcement bars that are damaged during concrete removal shall be replaced with an approved bar splicer or anchorage system. Cost included with Concrete Removal.
 The deck surface shall have its final finish tined according to Article 420.09(e)(1) of the Standard Specifications. Cost included with Concrete Superstructure.
 Joint openings shall be adjusted according to Article 520.04 of the Std. Specs. when the deck is poured at an ambient temperature other than 50° F.

TOTAL BILL OF MATERIAL

ITEM	UNIT	QUANTITY
* Protective Coat	Sq. Yd.	38
Concrete Removal	Cu. Yd.	21.7
Concrete Superstructure	Cu. Yd.	21.7
Reinforcement Bars, Epoxy Coated	Pound	4880
Bar Splicers	Each	28
Modular Expansion Joint 12"	Foot	87
Drainage System	L. Sum	1
Structural Repair of Concrete (Depth $\leq 5'$)	Sq. Ft.	210
** Structural Steel Repair	Pound	10

* On new concrete adjacent to joints only.
 ** Installation of missing bolts.

BOLT INSTALLATION REPAIR				
NBIS ITEM	SPAN	MEMBER	LOCATION	DEFFICIENCY
61	2	Scupper	Gir. 7, S. End	Support Bracket Loose, Missing Nut
37	9	FB 8	E. End	7/8" ϕ Misdrilled hole in web
64	9	Long. Beam	Between FB 12 & 13 @ FB 12	1" ϕ Misdrilled hole in web.
85	10	FB 30	4'-6" from Girder 1	7/8" ϕ Misdrilled hole in bottom flange
78	10,11	Pylon 10 Inside tower	Between 1st. & 2nd. Landing	2 missing bolts on ladder splice plate.



EXPIRES 11-30-2020

DESIGNED: *Victor H. Veliz*
 CHECKED: *Victor H. Veliz*
 DRAWN: *daburdell*
 CHECKED: *133 VHV*

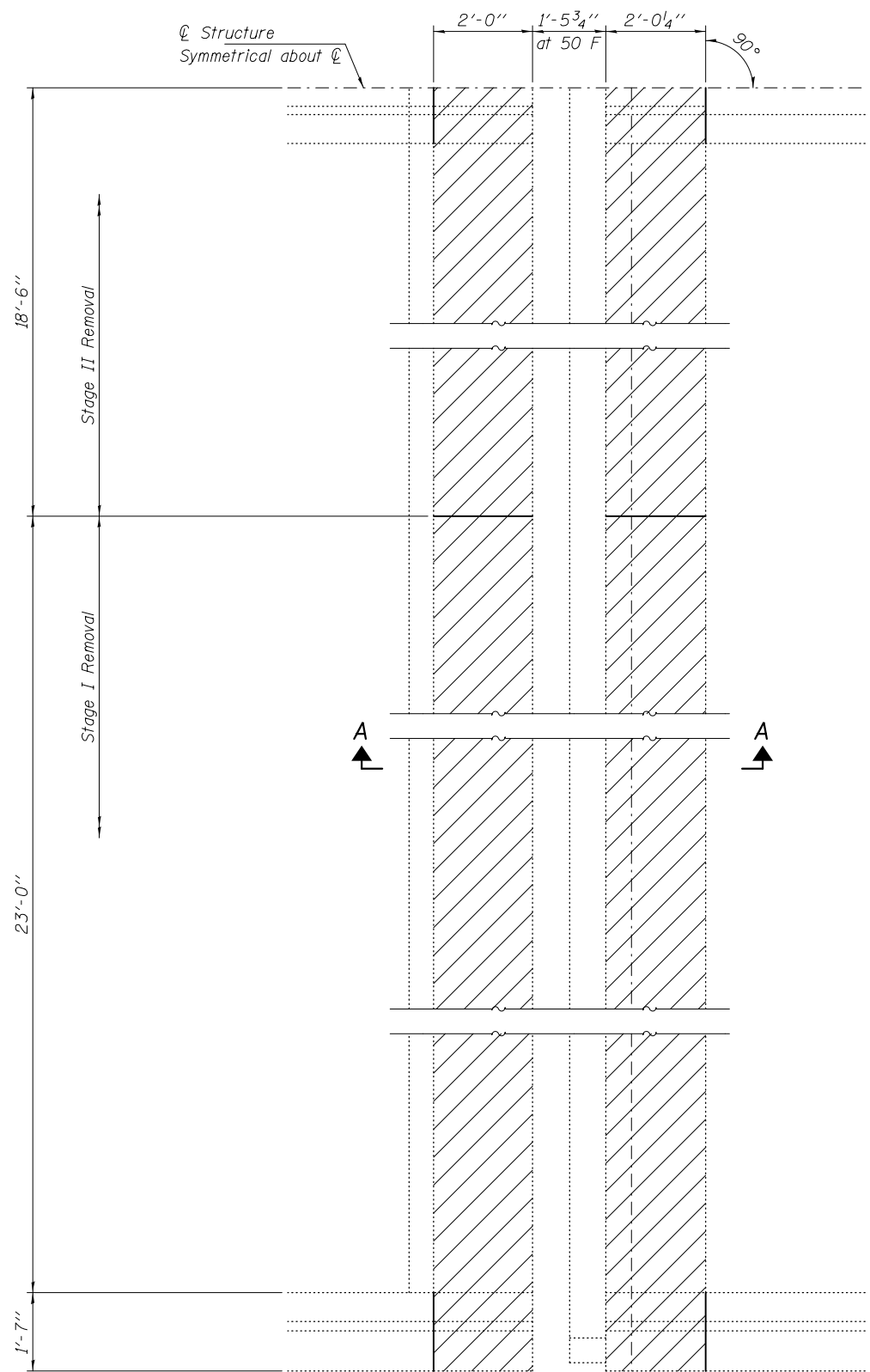
EXAMINED: *Timothy A. Applegate* DATE: NOVEMBER 26, 2018
 PASSED: *Shawn C. Krueger*
 ENGINEER OF BRIDGES AND STRUCTURES

STATE OF ILLINOIS
 DEPARTMENT OF TRANSPORTATION

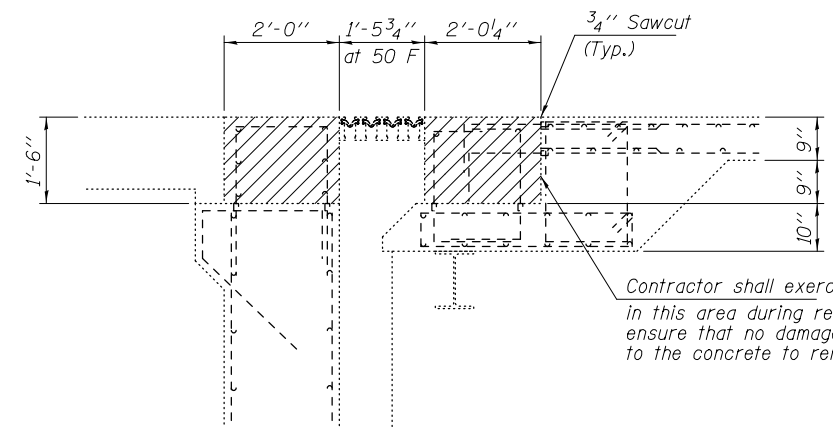
PLAN
 F.A. RTE. 10 (U.S. RTE. 67) OVER MISSISSIPPI RIVER
 SN 060-0255

SHEET NO. 1 OF 7 SHEETS

F.A. RTE.	SECTION	COUNTY	TOTAL SHEETS	SHEET NO.
10	100B-1BJR-1	MADISON	20	13
CONTRACT NO. 76050			ILLINOIS FED. AID PROJECT	

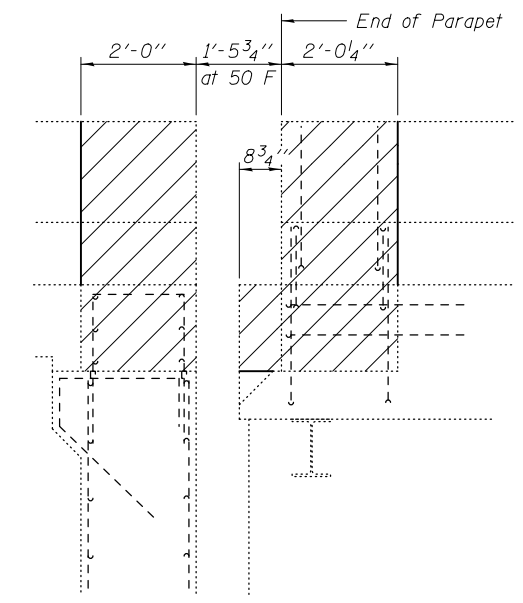


CONCRETE REMOVAL DETAILS
South Abutment



SECTION A-A

Cost of existing modular joint removal is included with Concrete Removal.



OUTSIDE VIEW AT EAST PARAPET

Note:
Hatched areas indicate
Concrete Removal.

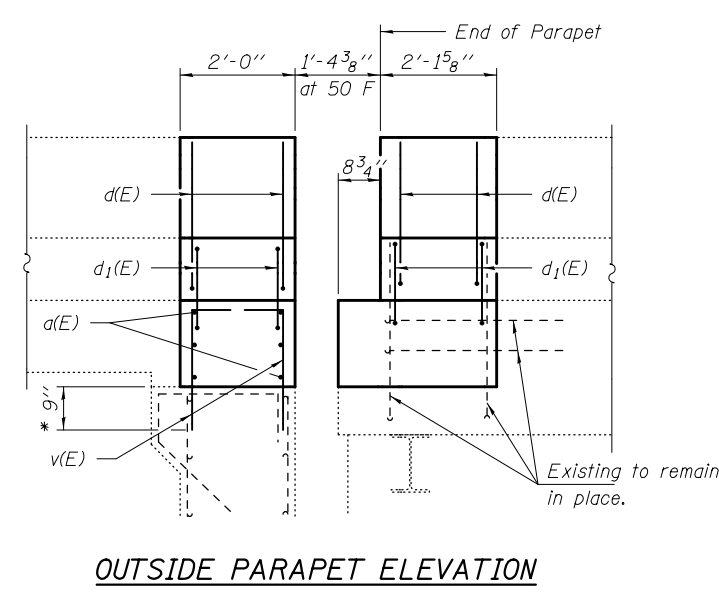
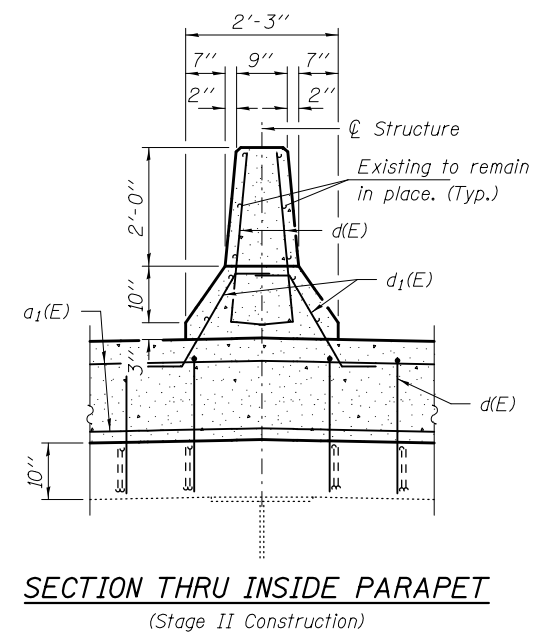
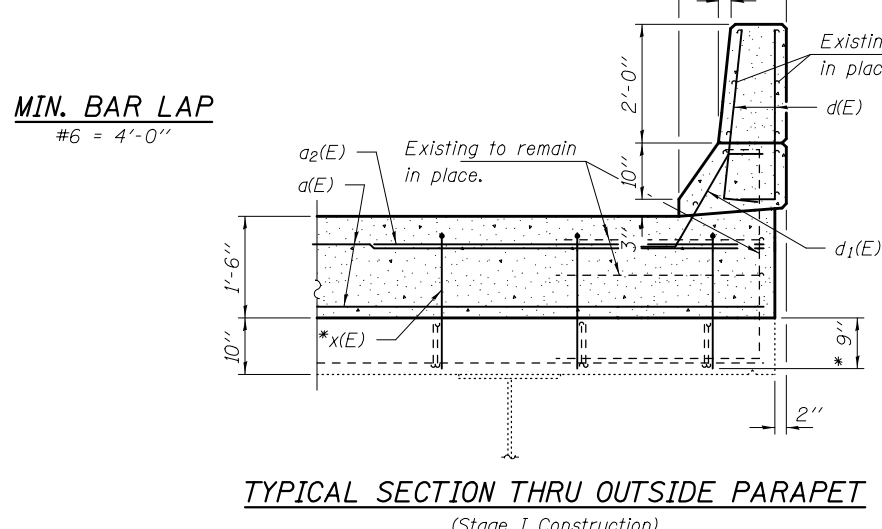
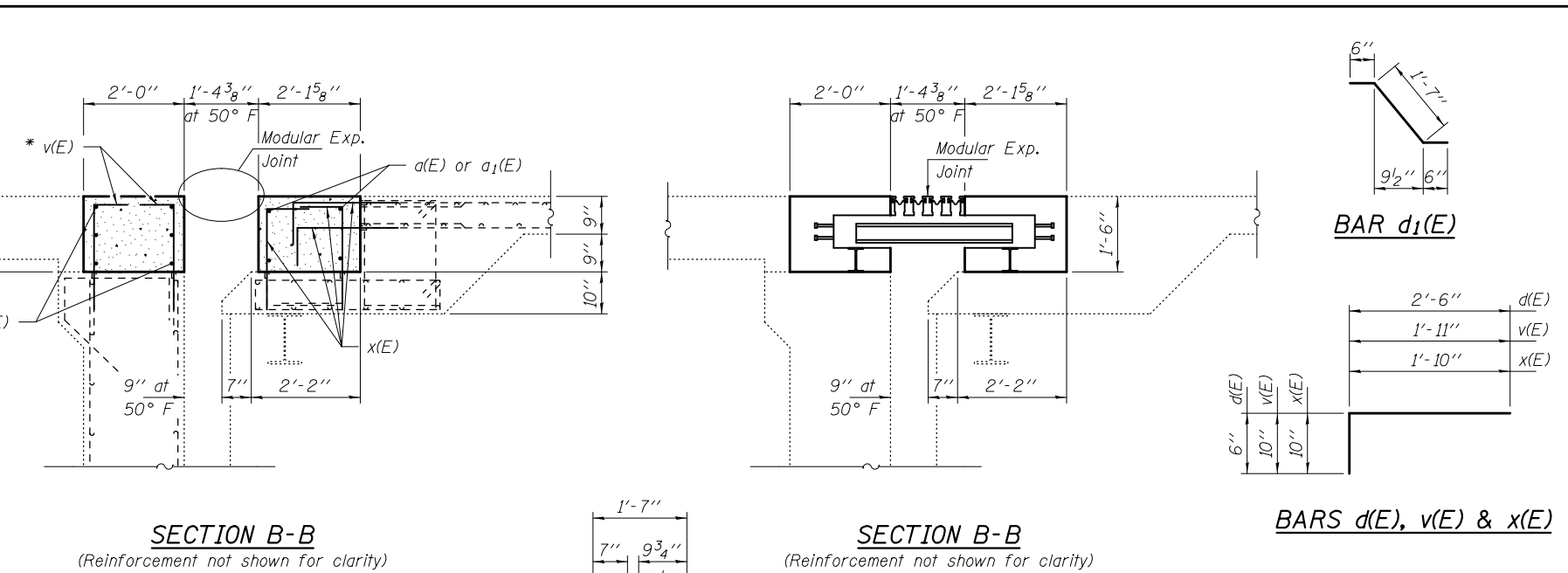
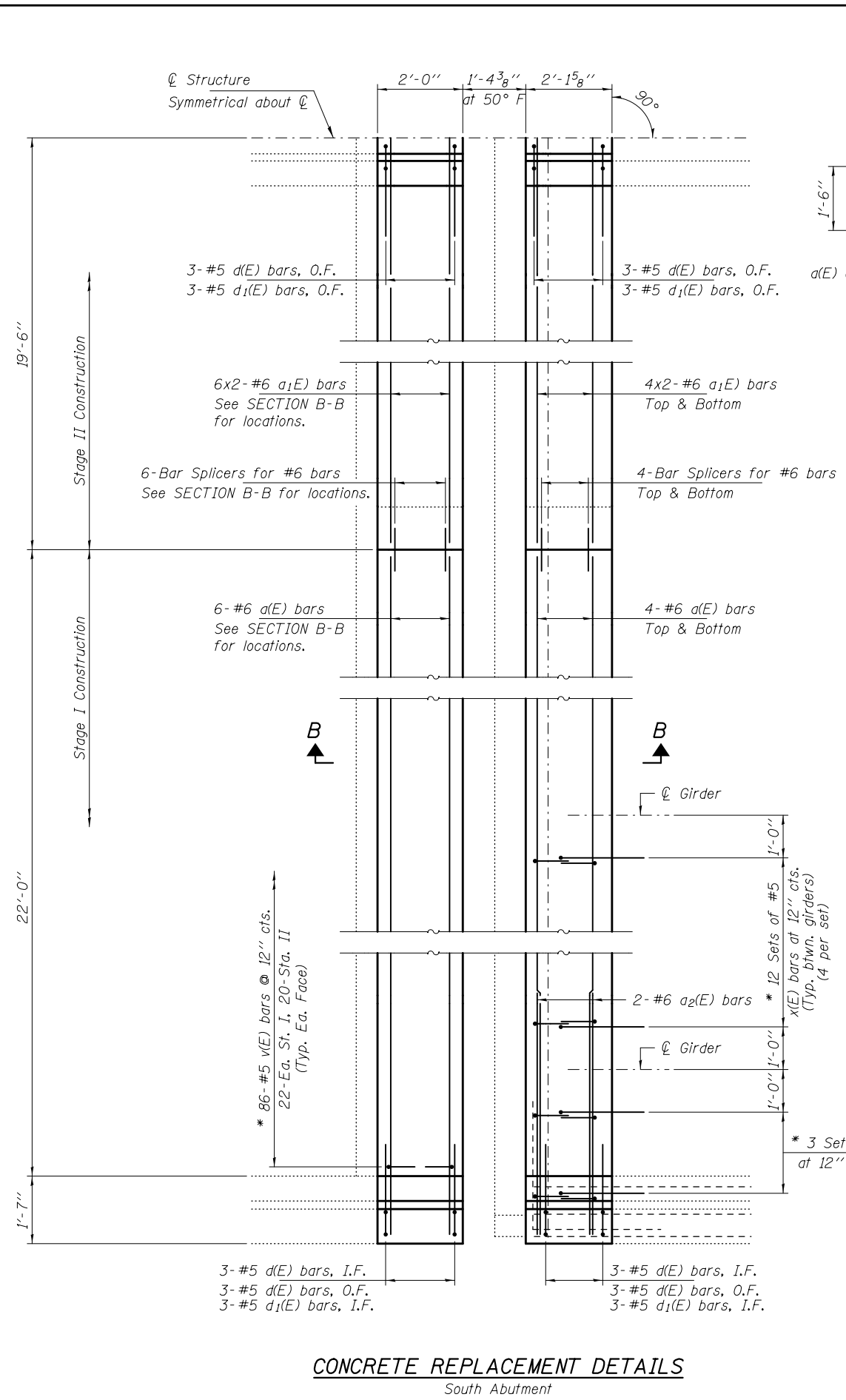
DESIGNED - VHV	EXAMINED	DATE NOVEMBER 26, 2018
CHECKED - JSB	<i>Timothy A. Daburdell</i> ACTING ENGINEER OF STRUCTURAL SERVICES	
DRAWN - <i>daburdell</i>	PASSED	REVISED
CHECKED - VHV JSB	<i>Carl P. ...</i> ENGINEER OF BRIDGES AND STRUCTURES	REVISED

STATE OF ILLINOIS
DEPARTMENT OF TRANSPORTATION

JOINT REMOVAL - SOUTH ABUTMENT
SN 060-0255

SHEET NO. 2 OF 7 SHEETS

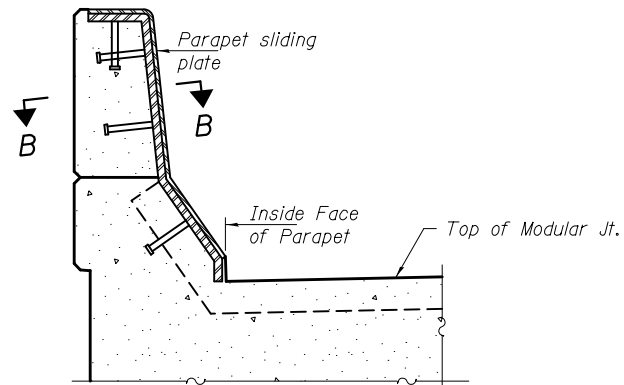
F.A. RTE.	SECTION	COUNTY	TOTAL SHEETS	SHEET NO.
10	100B-18JR-1	MADISON	20	14
CONTRACT NO. 76K30			ILLINOIS FED. AID PROJECT	



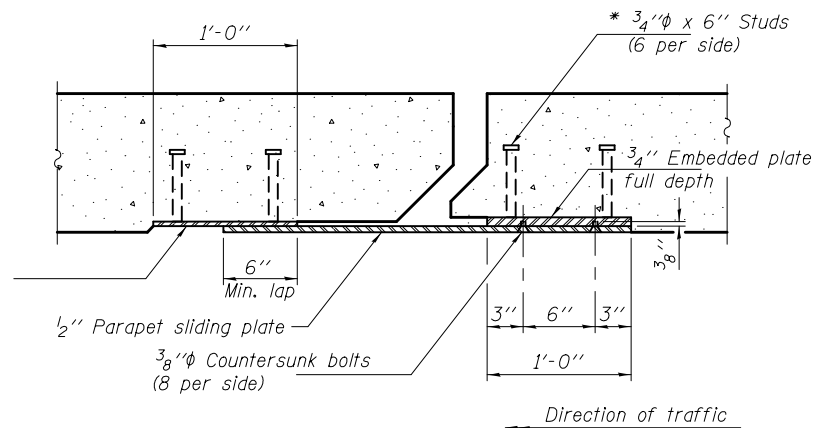
BILL OF MATERIAL

Bar	No.	Size	Length	Shape
a(E)	28	#6	23'-1"	—
a1(E)	28	#6	21'-4"	—
a2(E)	4	#6	5'-9"	—
d(E)	36	#5	3'-0"	L
d1(E)	24	#5	2'-7"	∩
v(E)	172	#6	2'-9"	L
x(E)	312	#5	2'-8"	L
Concrete Removal			Cu. Yd.	21.7
Concrete Superstructure			Cu. Yd.	21.7
Bar Splicers			Each	28
Protective Coat			Sq. Yd.	44
Reinforcement Bars, Epoxy Coated			Pound	4880

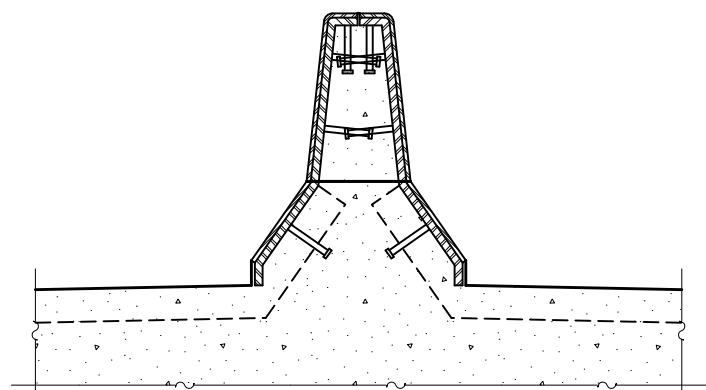
Placement of reinforcement within the joint block out needs to be coordinated with the joint manufacturer.



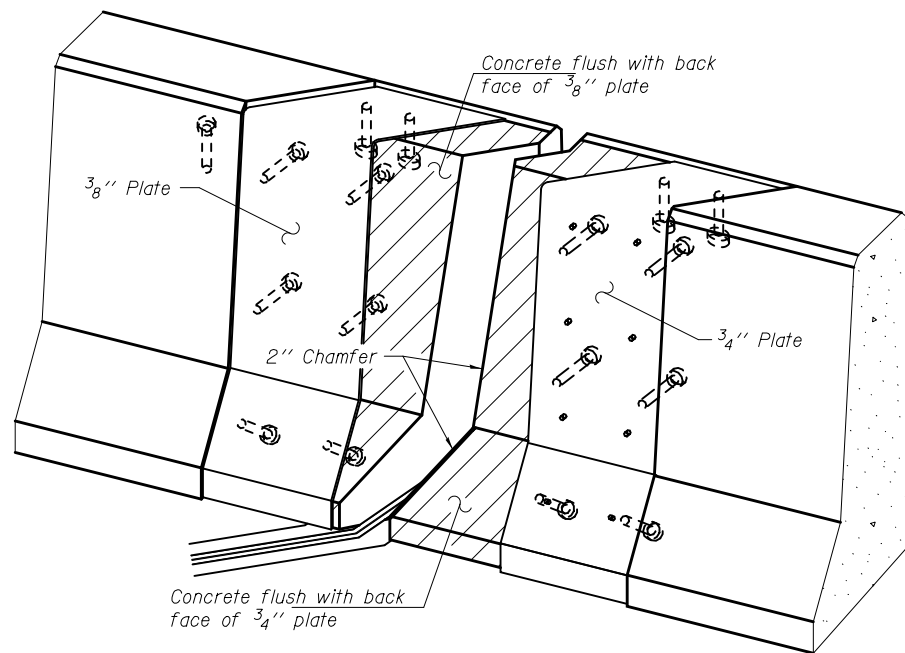
ELEVATION AT OUTSIDE PARAPET



SECTION B-B



ELEVATION AT OUTSIDE PARAPET



TRIMETRIC VIEW
 (Showing embedded plates only)

Notes:
 All steel components shall be galvanized after fabrication according to Article 520.03 of the Standard Specifications.

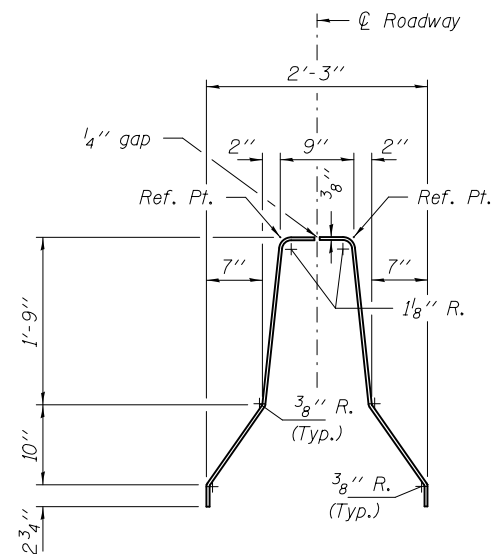


PLATE BEND DETAIL
 (Center Barrier Plates)

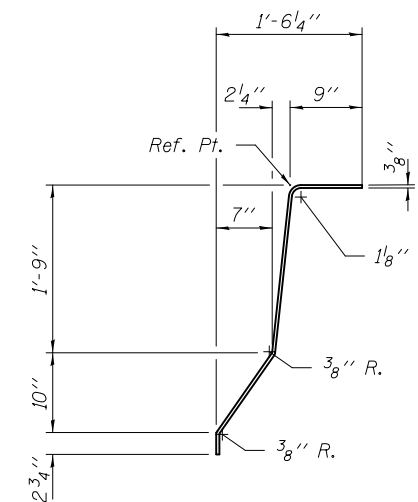


PLATE BEND DETAIL
 (RH. & LH. Barrier Plates)

DESIGNED - VHV
 CHECKED - JSB
 DRAWN - daburdell
 CHECKED - VHV JSB

EXAMINED
 PASSED
 ACTING ENGINEER OF STRUCTURAL SERVICES
 ENGINEER OF BRIDGES AND STRUCTURES

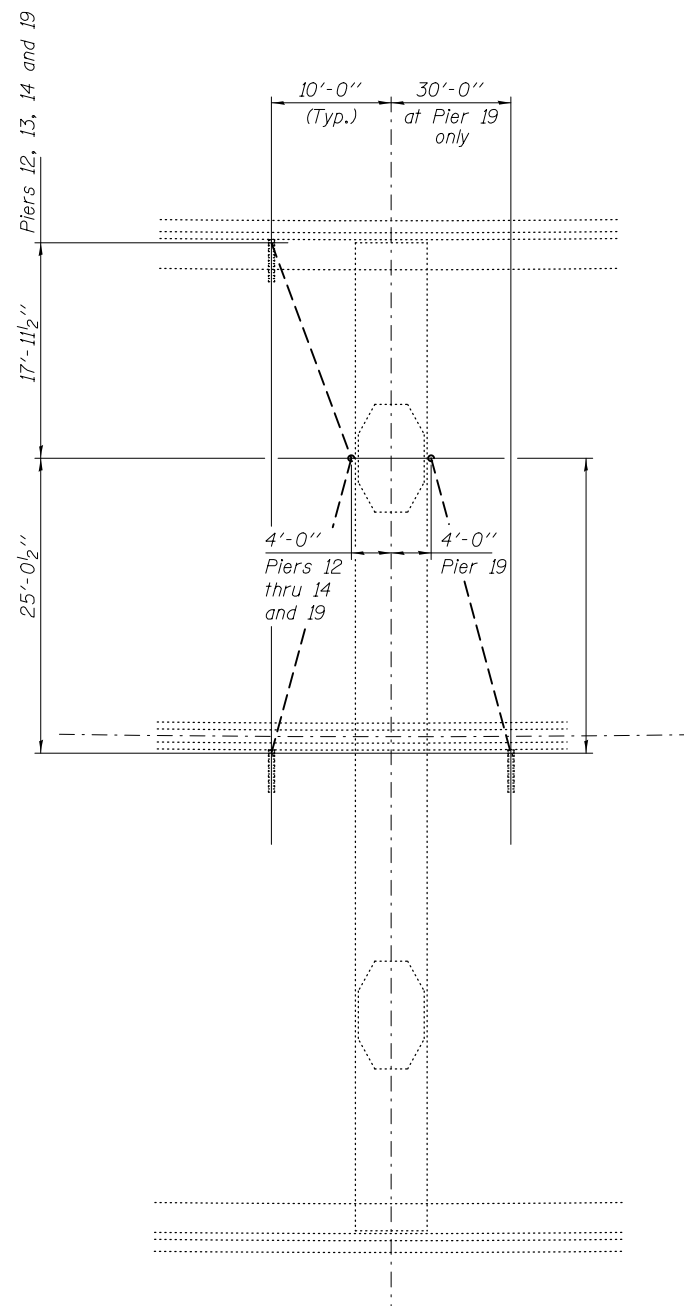
DATE NOVEMBER 26, 2018
 REVISED
 REVISED

STATE OF ILLINOIS
 DEPARTMENT OF TRANSPORTATION

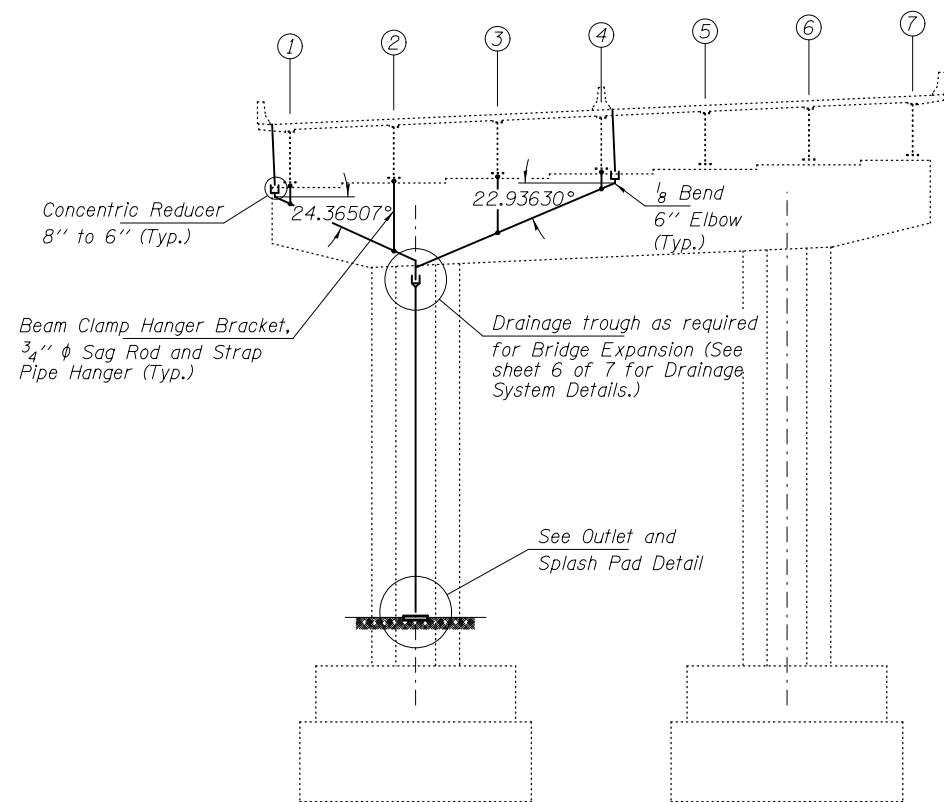
SLIDING PLATE DETAILS & PIER 14 CONCRETE REPAIR
 SN 060-0255

SHEET NO. 4 OF 7 SHEETS

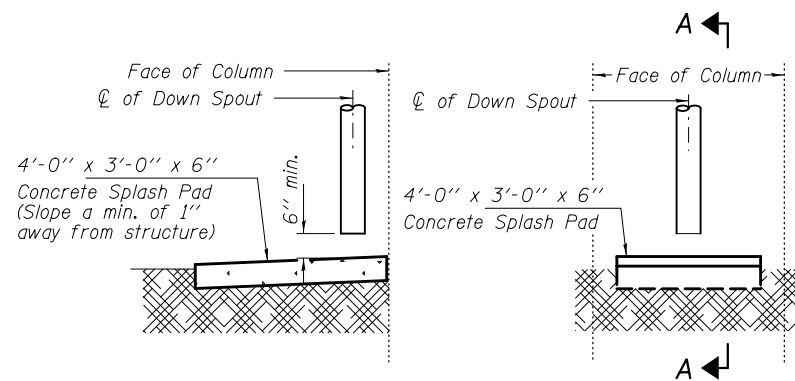
F.A. RTE.	SECTION	COUNTY	TOTAL SHEETS	SHEET NO.
10	100B-18JR-1	MADISON	20	16
CONTRACT NO. 76K30				
ILLINOIS FED. AID PROJECT				



PARTIAL PLAN FOR PIERS 12, 13, 14 & 19



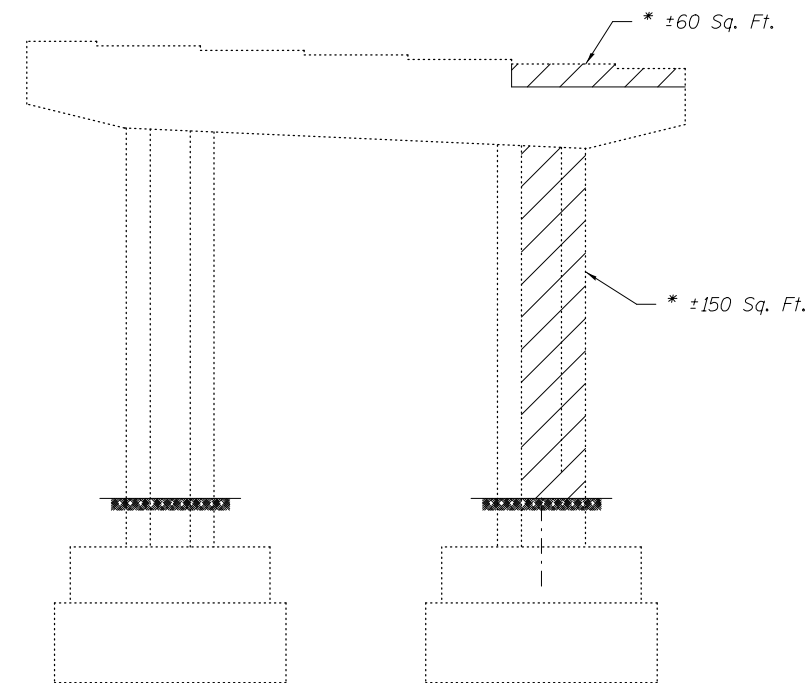
ELEVATION FOR PIERS 12, 13, 14 & 19



SECTION A-A

ELEVATION

OUTLET AND SPLASH PAD DETAIL
(Piers 14 & 19 only)



ELEVATION PIER 14

(Looking South)

2016 NBIS Bridge Inspection Report Item #31

* Estimated actual location and size to be determined by the Engineer in the field.

Structural Repair of Concrete (Depth ≤ 5")

Note:
The cost of pipe, hangers, brackets, fittings, troughs, all required fasteners, concrete splash blocks and installation shall be included with Lump Sum cost for "Drainage System".

BILL OF MATERIAL

Item	Unit	Quantity
Drainage System	L. Sum	1
Structural Repair of Concrete (Depth ≤ 5")	Sq. Ft.	210

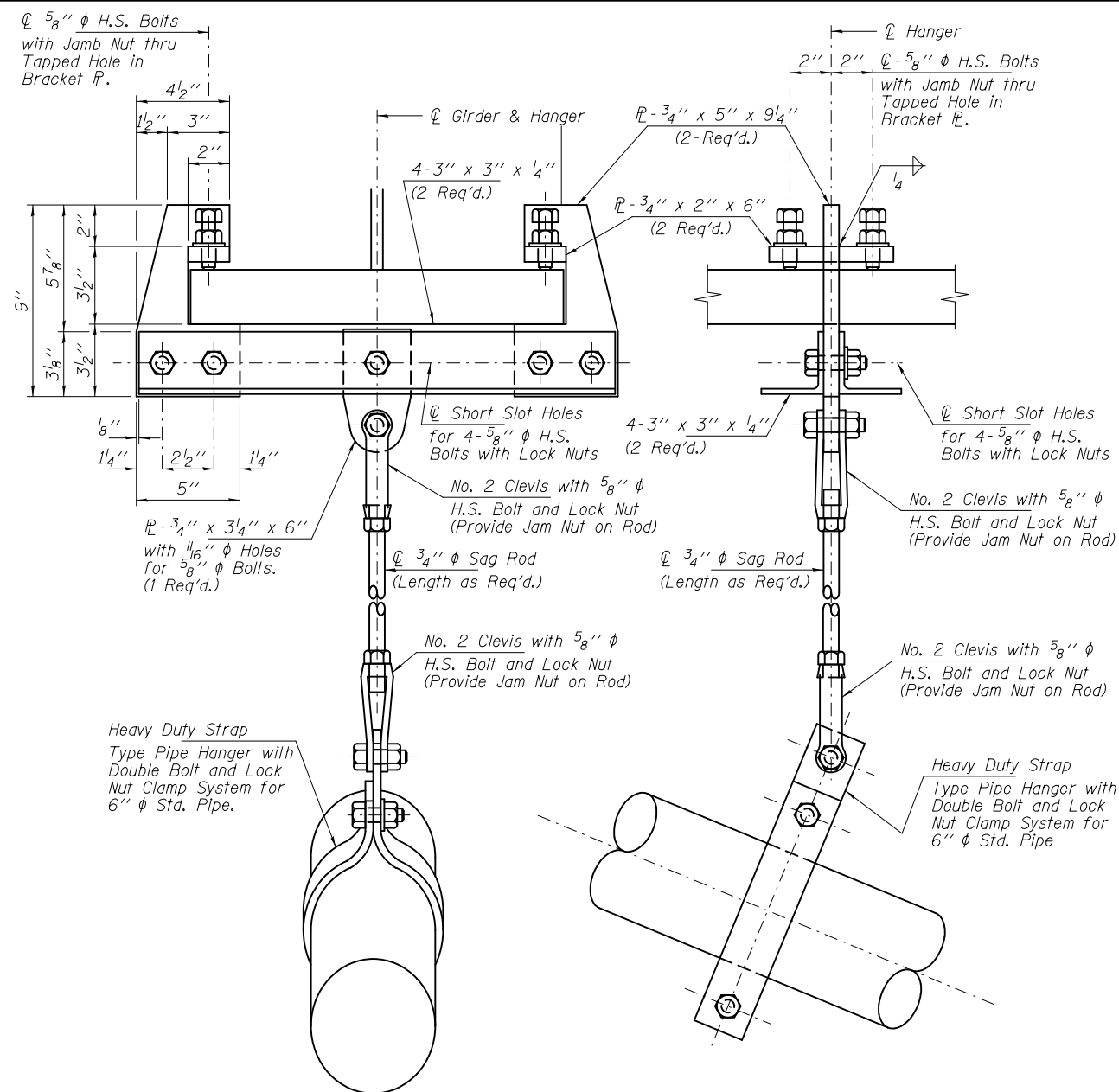
DESIGNED - VHV	EXAMINED - <i>Timothy A. Daburdell</i>	DATE - NOVEMBER 26, 2018
CHECKED - JSB	ACTING ENGINEER OF STRUCTURAL SERVICES	
DRAWN - <i>daburdell</i>	PASSED - <i>Carl Berger</i>	REVISOR
CHECKED - VHV JSB	ENGINEER OF BRIDGES AND STRUCTURES	REVISOR

STATE OF ILLINOIS
DEPARTMENT OF TRANSPORTATION

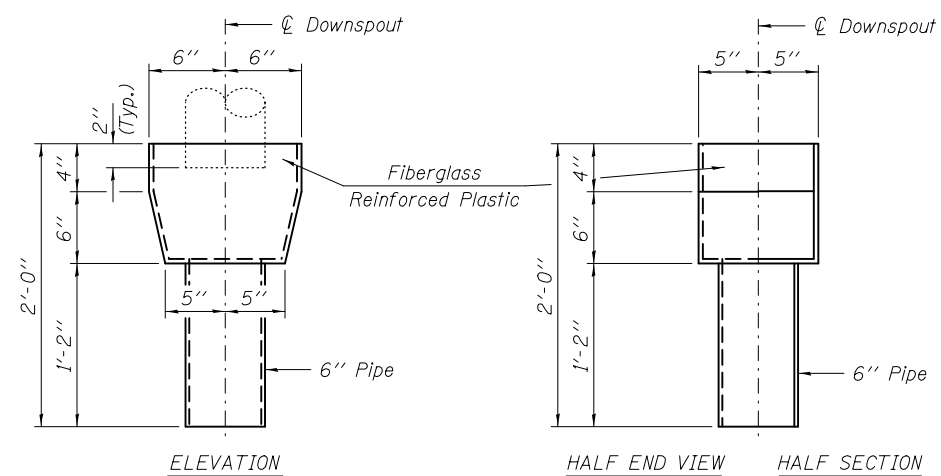
DRAINAGE SYSTEM DETAILS & CONCRETE REPAIRS PIER 14
SN 060-0255

SHEET NO. 5 OF 7 SHEETS

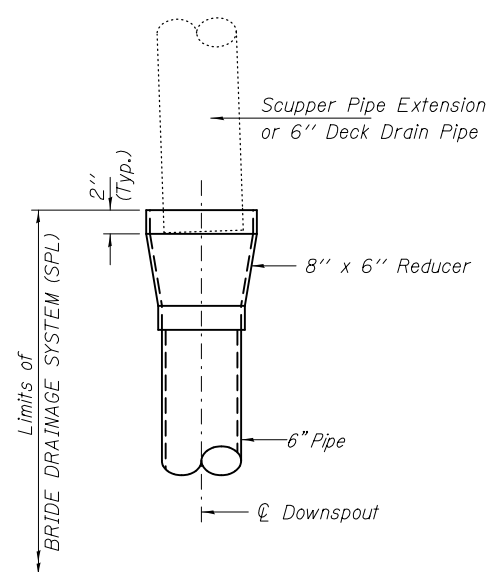
F.A. RTE.	SECTION	COUNTY	TOTAL SHEETS	SHEET NO.
10	100B-1B/R-1	MADISON	20	17
CONTRACT NO. 76K30			ILLINOIS FED. AID PROJECT	



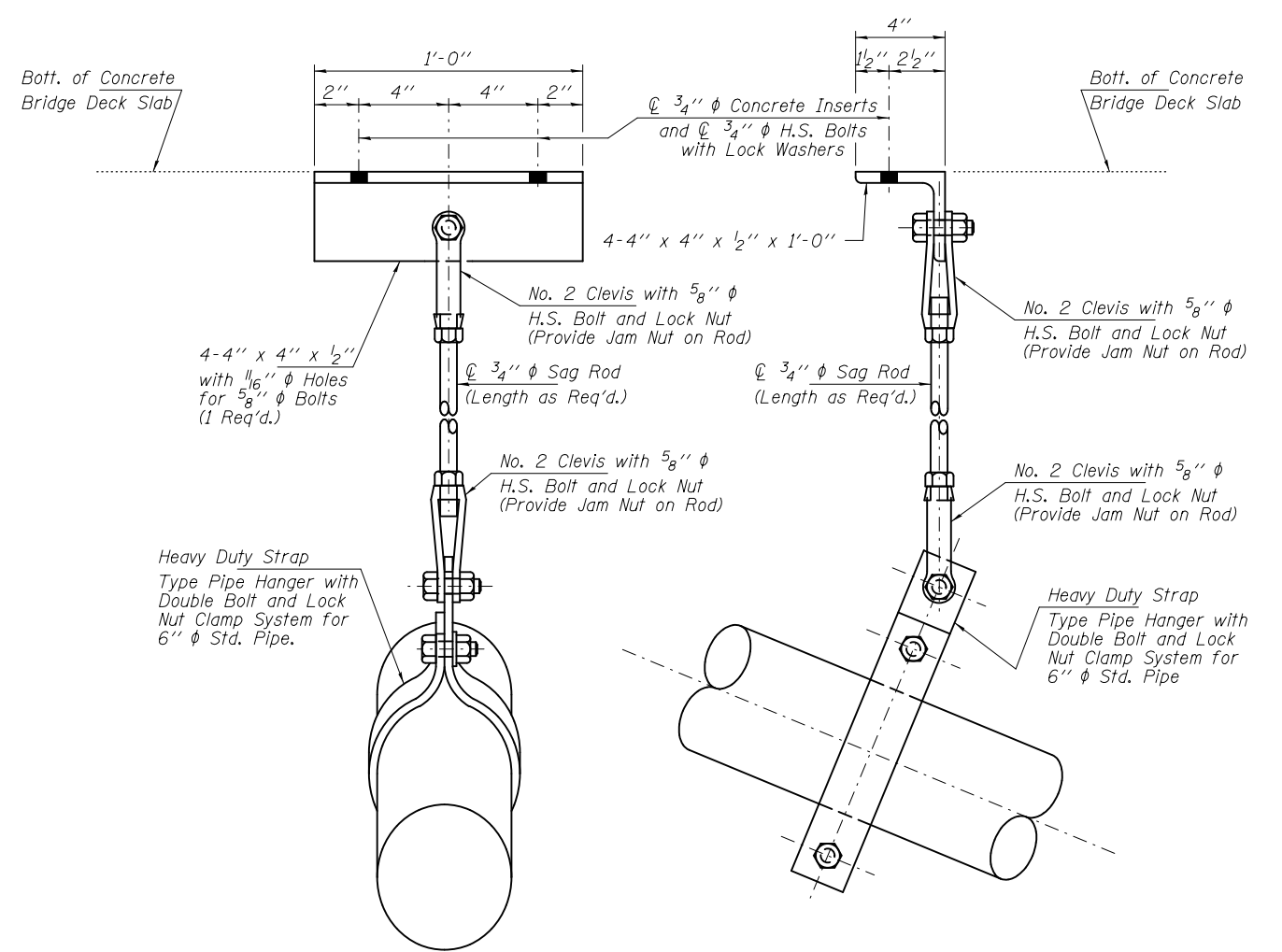
GIRDER HANGER AND PIPE BRACKET DETAILS
(As Required Cost Incidental to "Drainage System")



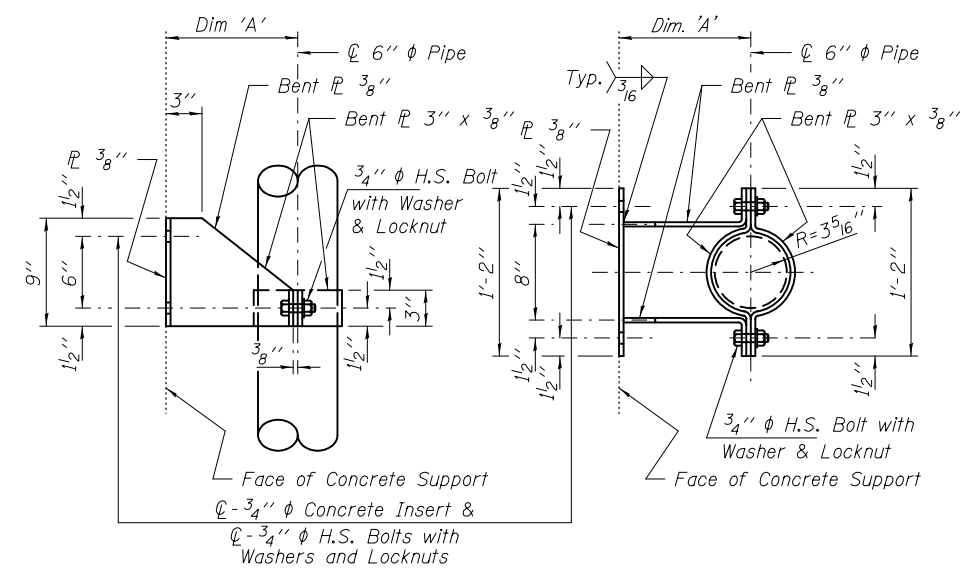
DRAINAGE TROUGH DETAILS



REDUCER INLET DETAIL



DECK SLAB HANGER AND PIPE BRACKET DETAILS
(As Required Cost Incidental to "Drainage System")



PIPE BRACKETS A THRU C

TYPE	DIM. 'A'
Pipe Bracket A	X
Pipe Bracket B	X
Pipe Bracket C	X

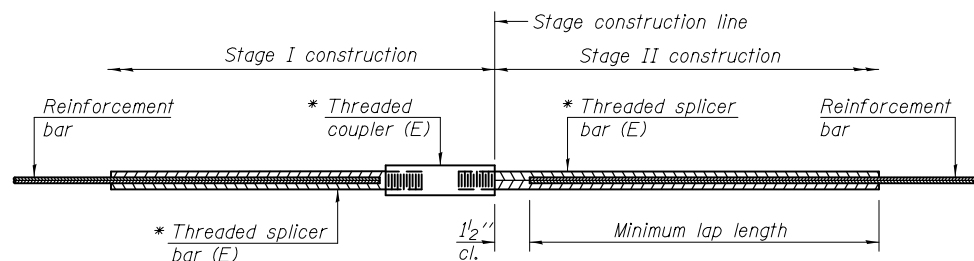
DESIGNED - VHV	EXAMINED - <i>Timothy A. Daburdell</i>	DATE - NOVEMBER 26, 2018
CHECKED - JSB	ACTING ENGINEER OF STRUCTURAL SERVICES	
DRAWN - <i>daburdell</i>	PASSED - <i>Carl Berger</i>	REVISOR
CHECKED - VHV JSB	ENGINEER OF BRIDGES AND STRUCTURES	REVISOR

STATE OF ILLINOIS
DEPARTMENT OF TRANSPORTATION

DRAINAGE SYSTEM DETAILS
SN 060-0255

SHEET NO. 6 OF 7 SHEETS

F.A. RTE.	SECTION	COUNTY	TOTAL SHEETS	SHEET NO.
10	100B-18JR-1	MADISON	20	18
CONTRACT NO. 76K30			ILLINOIS FED. AID PROJECT	

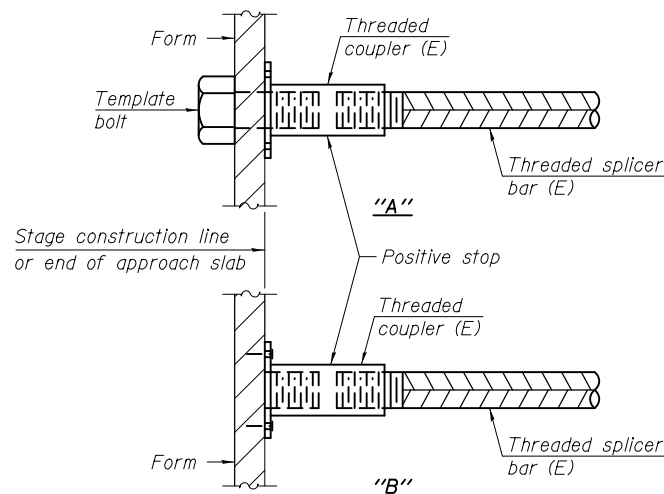


STANDARD BAR SPLICER ASSEMBLY

Threaded splicer bar length = min. lap length + 1/2" + thread length

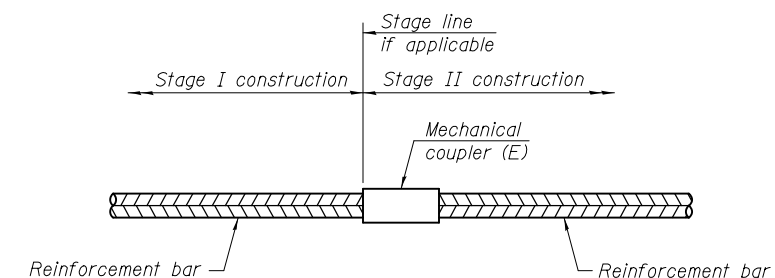
* Epoxy not required on Bar Splicer Assembly components used in conjunction with black bars.

Location	Bar size	No. assemblies required	Minimum lap length
N. Abut. Deck	#6	16	4'-0"
N. Abut. HB	#6	12	4'-0"



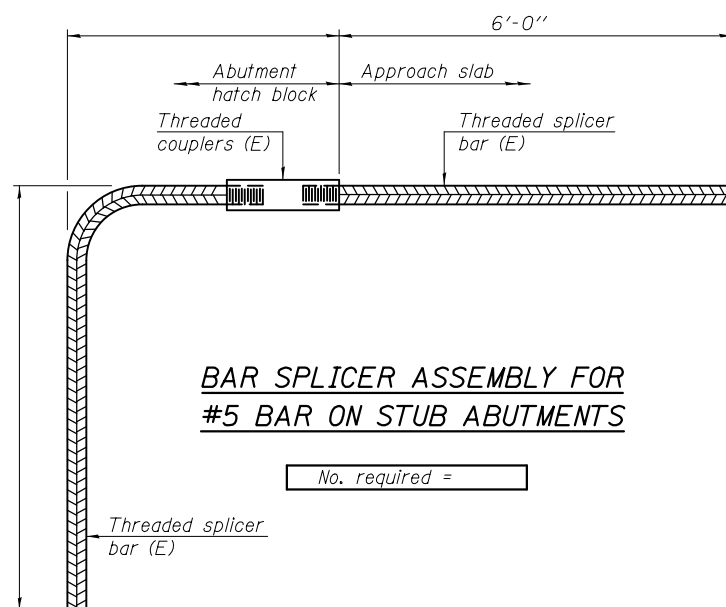
INSTALLATION AND SETTING METHODS

"A" : Set bar splicer assembly by means of a template bolt.
 "B" : Set bar splicer assembly by nailing to wood forms or cementing to steel forms.
 (E) : Indicates epoxy coating.



STANDARD MECHANICAL SPLICER

Location	Bar size	No. assemblies required



BAR SPLICER ASSEMBLY FOR #5 BAR ON STUB ABUTMENTS

No. required =

NOTES

Splicer bars shall be deformed with threaded ends and have a minimum 60 ksi yield strength.
 All reinforcement shall be lapped and tied to the splicer bars.
 Bar splicer assemblies shall be epoxy coated according to the requirements for reinforcement bars. See Section 508 of the Standard Specifications.
 See approved list of bar splicer assemblies and mechanical splicers for alternatives.

BSD-1

6-8-15

DESIGNED - VHV	EXAMINED	DATE NOVEMBER 26, 2018
CHECKED - JSB	<i>Timothy A. Daburdell</i> ACTING ENGINEER OF STRUCTURAL SERVICES	
DRAWN - daburdell	PASSED	REVISOR
CHECKED - VHV JSB	<i>Carl Poyner</i> ENGINEER OF BRIDGES AND STRUCTURES	REVISOR

STATE OF ILLINOIS
DEPARTMENT OF TRANSPORTATION

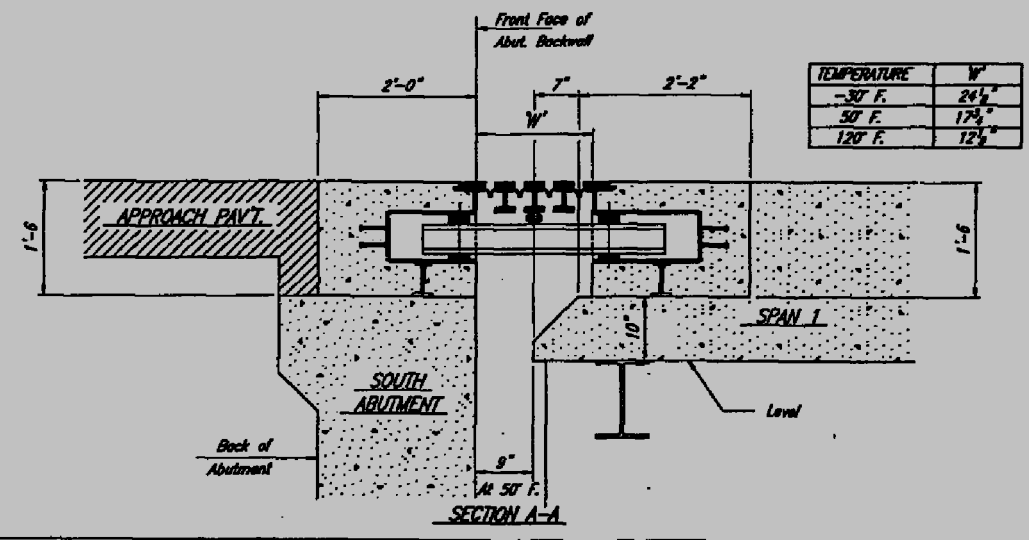
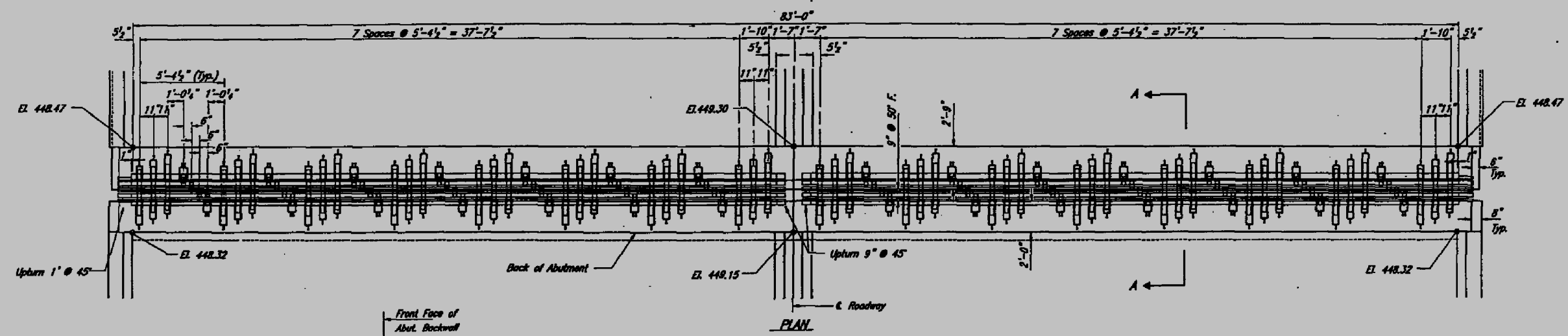
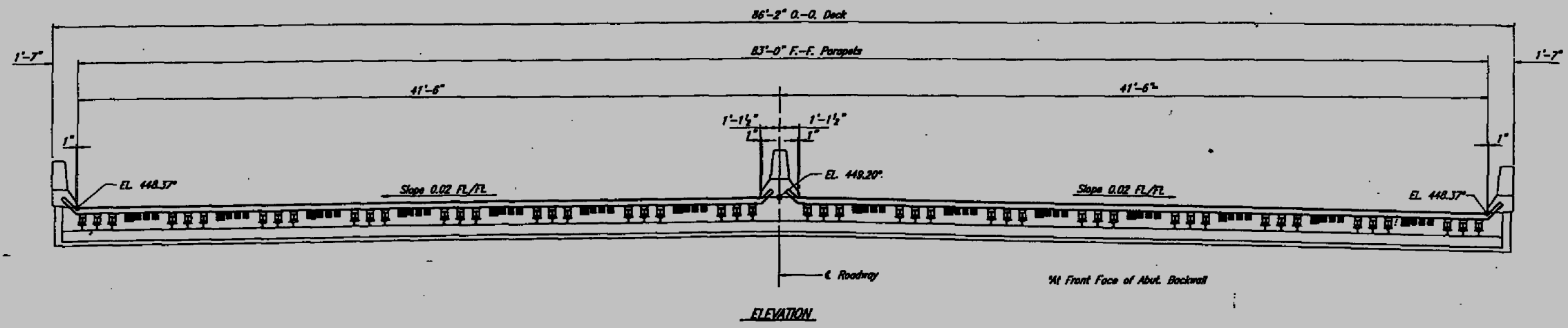
BAR SPLICER ASSEMBLY AND MECHANICAL SPLICER DETAILS
SN 060-0255

SHEET NO. 7 OF 7 SHEETS

F.A. RTE.	SECTION	COUNTY	TOTAL SHEETS	SHEET NO.
10	100B-1B/R-1	MADISON	20	19
ILLINOIS FED. AID PROJECT			CONTRACT NO. 76K30	

PROJECT NO.	SECTION	SHEET	TOTAL SHEETS
F.A. 10 100HB	MOISSON	121	24

Sheet 20 of 59



NOTES:
Modular Expansion Joint to be Rabot type LR4 as manufactured by TechStar Inc, 532 Sutton Place, Findlay, Ohio 45840 Phone No. (419) 424-0888 (formerly known as United Steel Fabricators, Inc.)
Joint opening shall be adjusted in accordance with Article 503.07(c) of the Standard Specifications when blockout is cast at an ambient temperature other than 50° F.
Expansion Joint billed as Modular Expansion Joint 12".

STRUCTURE NUMBER: 060-0255

STEEL ALTERNATIVE

SOUTH ABUTMENT EXPANSION JOINT
F.A. ROUTE 10 (U.S. Rte. 67) over
MISSISSIPPI RIVER
SECTION NO. 100HB
MADISON CO., ILL. & ST. CHARLES CO., MO.
STATION 231+45.00

ACAD\8551001A\MOEJLC4

FOR INFORMATION ONLY

MODEL: 44061.MXD
FILE NAME: P:\CADD\100HB\100HB020\DWG\MOEJLC4.dwg
PROJECT: 060-0255\100HB-1\MOEJLC4.dwg
DATE: 10/5/2018
DRAWN BY: HARB
CHECKED BY: HARB
DESIGNED BY: HARB
REVISED BY: HARB

USER NAME = harbaughrd	DESIGNED -	REVISED -
	DRAWN -	REVISED -
PLOT SCALE = 100,0000' / in.	CHECKED -	REVISED -
PLOT DATE = 10/5/2018	DATE -	REVISED -

**STATE OF ILLINOIS
DEPARTMENT OF TRANSPORTATION**

EXISTING STRUCTURE PLANS

SCALE: NA SHEET 1 OF 1 SHEETS STA. TO STA.

F.A.P. RTE.	SECTION	COUNTY	TOTAL SHEETS	SHEET NO.
304	100B-1BJR-1	MADISON	20	20
CONTRACT NO. 76K30				
ILLINOIS FED. AID PROJECT				