

STATE OF ILLINOIS
DEPARTMENT OF TRANSPORTATION

F.A.J. RTE	SECTION	COUNTY	TOTAL SHEETS	SHEET NO.
55	60-(1,2,3)CJS-1	MADISON	6	1
ILLINOIS			CONTRACT NO. 76L35	

FOR INDEX OF SHEETS, SEE SHEET NO. 2

ADT

I-55 TO IL 4 EXIT
2017 ADT = 31600 (ACTUAL)
2018 ADT = 31900 (ESTIMATED)
2038 ADT = 37400 (ESTIMATED)
SU = 3.0% MU = 19.0%

I-55 FROM IL 4 EXIT TO NEW DOUGLAS EXIT
2017 ADT = 30200 (ACTUAL)
2018 ADT = 30400 (ESTIMATED)
2038 ADT = 35700 (ESTIMATED)
SU = 3.1% MU = 21.2%

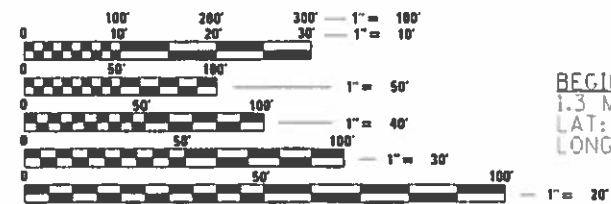
I-55 FROM NEW DOUGLAS EXIT TO MACOUPIN COUNTY LINE
2017 ADT = 28300 (ACTUAL)
2018 ADT = 28500 (ESTIMATED)
2038 ADT = 33500 (ESTIMATED)
SU = 3.3% MU = 26.1%

PROPOSED
HIGHWAY PLANS

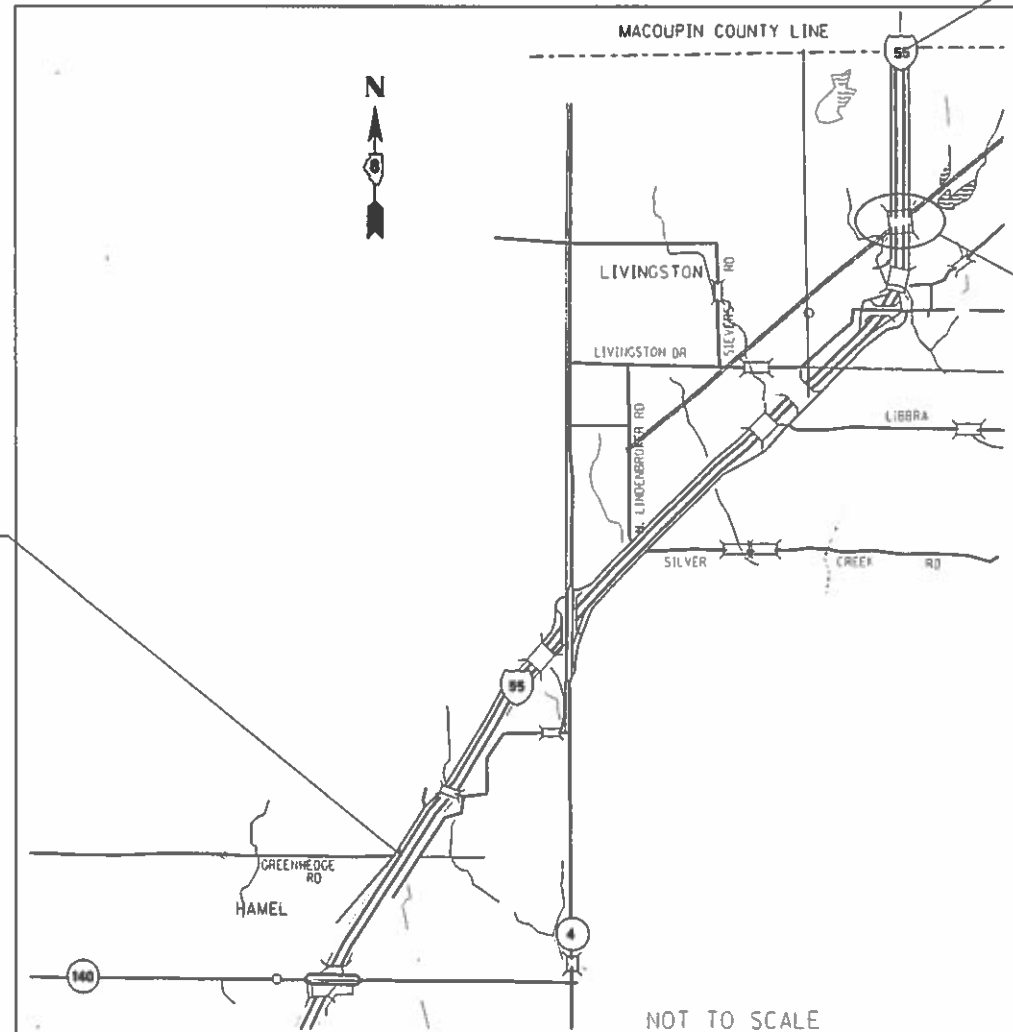
FAI ROUTE 55 (I-55)
SECTION 60-(1,2,3)CJS-1
PROJECT NHPP-FJAA (330)
CRACK AND JOINT SEAL
MADISON COUNTY

C-98-183-18

R 6 W



BEGIN PROJECT
1.3 MILES NORTH OF IL 140
LAT: 38.903055
LONG: -89.828365



END PROJECT
MACOUPIN COUNTY LINE
LAT: 38.997857
LONG: -89.750426

BRIDGE
OMISSION
SN 060-0196 (SB)
SN 060-0197 (NB)

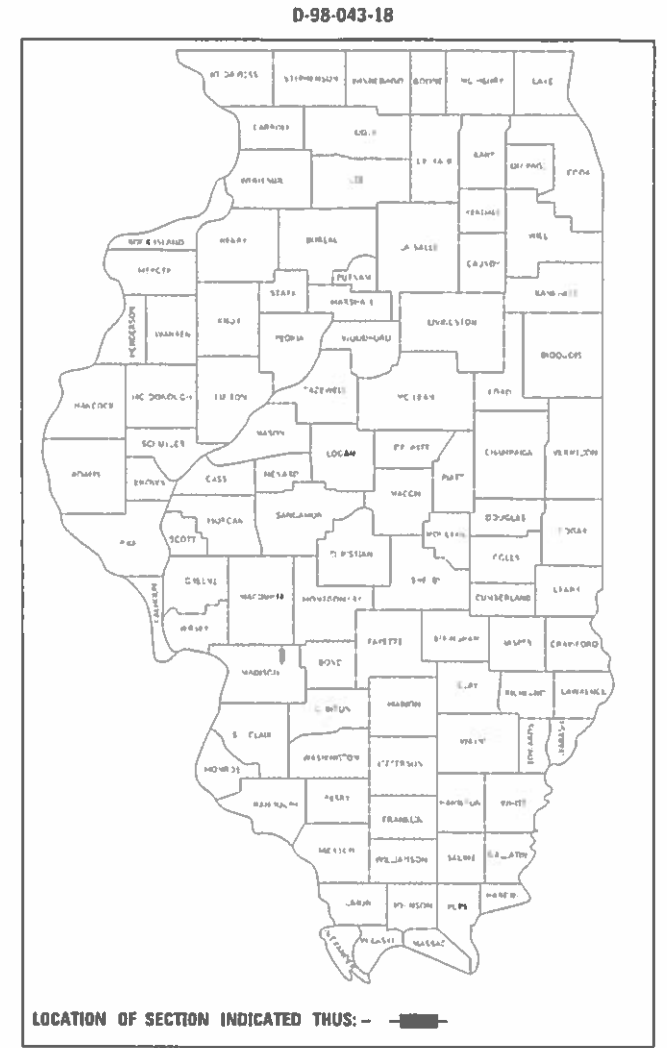
FULL SIZE PLANS HAVE BEEN PREPARED USING STANDARD ENGINEERING SCALES. REDUCED SIZED PLANS WILL NOT CONFORM TO STANDARD SCALES. IN MAKING MEASUREMENTS ON REDUCED PLANS, THE ABOVE SCALES MAY BE USED.

J.U.L.I.E.
JOINT UTILITY LOCATION INFORMATION FOR EXCAVATION
1-800-892-0123
OR 811

PROJECT ENGINEER: HERVE GELIN (618) 346-3179
SQUAD LEADER: BILLIE OWEN (618) 346-3209

CONTRACT NO. 76L35

GROSS LENGTH = 8.040 MILE
NET LENGTH = 8.006 MILE



STATE OF ILLINOIS
DEPARTMENT OF TRANSPORTATION

SUBMITTED *Oct 5 20 18*
Jeffrey Z. ...
REGIONAL ENGINEER

Dec 7 20 18
...
ENGINEER OF DESIGN AND ENVIRONMENT

Dec 20 18
Paul P. ...
DIRECTOR OF HIGHWAYS PROJECT IMPLEMENTATION 3

PRINTED BY THE AUTHORITY
OF THE STATE OF ILLINOIS

INDEX OF SHEETS

- 1 COVER SHEET
- 2 INDEX OF SHEETS, HIGHWAY STANDARDS,
GENERAL NOTES & COMMITMENTS
- 3 SUMMARY OF QUANTITIES
- 4 TYPICAL SECTION
- 5 SCHEDULES
- 6 CRACK & JOINT SEALING DETAIL

HIGHWAY STANDARDS

- 000001-07 STANDARD SYMBOLS, ABBREVIATIONS AND PATTERNS
- 701426-09 LANE CLOSURE, MULTILANE, INTERMITTENT OR MOVING OPER., FOR SPEEDS > 45MPH
- 701901-08 TRAFFIC CONTROL DEVICES

GENERAL NOTES

- 1. ILLINOIS STATE LAW REQUIRES A 48-HOUR NOTICE TO BE GIVEN TO UTILITIES BEFORE DIGGING. FIELD MARKING OF FACILITIES MAY BE OBTAINED BY CONTACTING J.U.L.I.E. (1-800-892-0123 OR 811) OR FOR NON-MEMBERS THE UTILITY COMPANY DIRECTLY.
- 2. ANY RAISED REFLECTIVE PAVEMENT MARKERS ENCOUNTERED SHALL BE LEFT IN PLACE. ROUTING SHALL BE GAPPED WHERE RAISED REFLECTIVE PAVEMENT MARKERS ARE ENCOUNTERED SO AS TO LEAVE THEM FUNCTIONAL.
- 3. RESIDENT ENGINEER SHALL DETERMINE EXACT LOCATION WHERE CRACKS ARE TO BE ROUTED AND FILLED.
- 4. ESTIMATED CRACK FILLING APPLICATION RATE : 0.33 LB/FT
- 5. THE CONTRACTOR AND THE ENGINEER SHALL BE AWARE THAT NO SURVEY WAS PERFORMED FOR THIS PROJECT. THE STATIONING, TOPOGRAPHY, AND QUANTITIES SHOWN IN THE PLANS WERE CREATED USING FIELD MEASUREMENTS. ALL SHALL BE ASSUMED TO BE APPROXIMATE. THE CONTRACTOR SHALL VERIFY DIMENSIONS AND CONDITIONS IN THE FIELD PRIOR TO CONSTRUCTION AND ORDERING OF MATERIALS.

- 6. THE ILLINOIS DEPARTMENT OF TRANSPORTATION STRONGLY ENCOURAGES THE PRIME CONTRACTOR AND THEIR APPROVED SUB-CONTRACTORS TO HIRE MINORITY, WOMEN AND DISADVANTAGED INDIVIDUALS FROM ITS FEDERALLY FUNDED HIGHWAY CONSTRUCTION CAREERS TRAINING PROGRAM (HCCTP) TO HELP MEET WORKFORCE AND TRAINEE GOALS. THIS PROGRAM IS TRAINING MINORITIES, WOMEN AND DISADVANTAGED INDIVIDUALS IN HIGHWAY CONSTRUCTION-RELATED SKILLS, E.G., MATH FOR THE TRADES, JOB READINESS, TECHNICAL SKILLS COURSEWORK (CARPENTRY, CONCRETE FLATWORK, BLUEPRINT READING, SITE PLANS, SITE WORK, TOOLS USE, ETC.) AND OSHA 10 HOUR CERTIFICATION, TO PREPARE THEM FOR A CAREER IN THE HIGHWAY CONSTRUCTION TRADES. GRADUATES ARE WELL-TRAINED AND READY TO BECOME PRODUCTIVE ENTRY-LEVEL CONSTRUCTION WORKERS. PLEASE CONTACT THE DISTRICT 8 EEO OFFICE AT 618-346-3360 AND/OR THE HCCTP COORDINATOR AT 618/874-6528 TO LEARN MORE ABOUT THE PROGRAM AND FOR ASSISTANCE IN MEETING WORKFORCE AND TRAINEE GOALS.
- 7. TWO CHANGEABLE MESSAGE BOARDS SHALL BE REQUIRED FOR THIS PROJECT. BOTH SHALL BE PLACED TWO WEEKS PRIOR TO ANY LANE CLOSURE, ONE ON EACH END OF THE PROJECT. ONE SHALL REMAIN FOR THE DURATION OF THE CONTRACT AND PLACED AT THE DIRECTION OF THE ENGINEER.

COMMITMENTS
NONE

REV. - MS

MODEL: Default
FILE NAME: P:\11108A\BID\NTEC\Illinois.gov\PIWDOT\Documents\DOT Offices\District 8\Projects\0876135\CADD\data\CAD\sheet\0876135-418-generotes.dgn

USER NAME = lewisko	DESIGNED -	REVISED -
	DRAWN -	REVISED -
PLOT SCALE = 100.0000' / 1in.	CHECKED -	REVISED -
PLOT DATE = 10/9/2018	DATE -	REVISED -

**STATE OF ILLINOIS
DEPARTMENT OF TRANSPORTATION**

**INDEX OF SHEETS, HIGHWAY STANDARDS,
GENERAL NOTES & COMMITMENTS**

SCALE: NTS SHEET NO. OF SHEETS STA. TO STA.

F.A.I. RTE.	SECTION	COUNTY	TOTAL SHEETS	SHEET NO.
55	60-(1,2,3)CJS-1	MADISON	6	2
CONTRACT 76L35				
FED. ROAD DIST. NO. ILLINOIS FED. AID PROJECT				

MODEL: Default
 FILE NAME: P:\1108\BID\NTEC\Illinois.gov\PWIDOT\Documents\DOT Offices\District 8\Projects\0876135\CADD\data\CAD\sheet\0876135-rt-500.dgn

90% FED
 10% STATE

CONSTR. CODE	
MADISON	ROADWAY
0005	RURAL

CODE NO.	ITEM	UNIT	TOTAL QUANTITY	
45100100	CRACK ROUTING (PAVEMENT)	FOOT	90479	90479
45100200	CRACK FILLING	POUND	29858	29858
67100100	MOBILIZATION	L SUM	1	1
70300100	SHORT TERM PAVEMENT MARKING	FOOT	7632	7632
70300150	SHORT TERM PAVEMENT MARKING REMOVAL	SQ FT	2544	2544
* 78000400	THERMOPLASTIC PAVEMENT MARKING - LINE 6"	FOOT	21000	21000
X7010216	TRAFFIC CONTROL AND PROTECTION, (SPECIAL)	L SUM	1	1
70107025	CHANGEABLE MESSAGE SIGN	CAL DA	65	65

* SPECIALTY ITEM

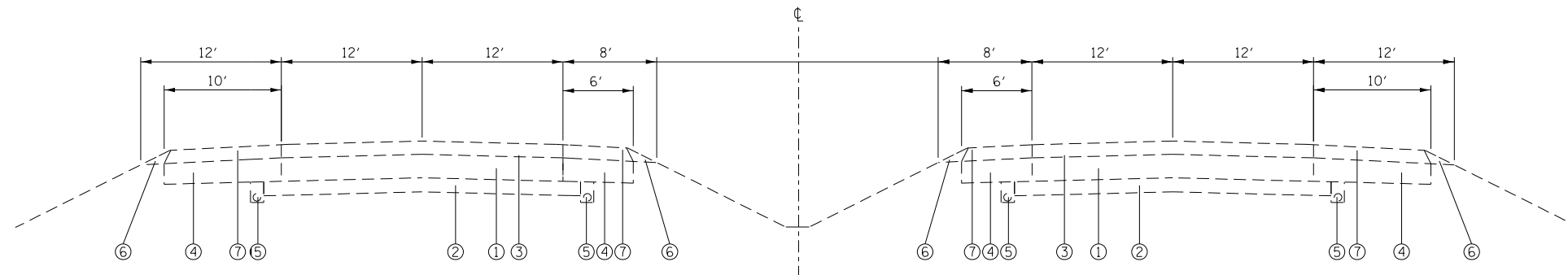
USER NAME = lewiska	DESIGNED -	REVISED -
	DRAWN -	REVISED -
PLOT SCALE = 100.0000' / in.	CHECKED -	REVISED -
PLOT DATE = 10/9/2018	DATE -	REVISED -

**STATE OF ILLINOIS
 DEPARTMENT OF TRANSPORTATION**

SUMMARY OF QUANTITIES

SCALE: SHEET OF SHEETS STA. TO STA.

F.A.I. RTE.	SECTION	COUNTY	TOTAL SHEETS	SHEET NO.
64	82-(8,9,10)C/S-1	MADISON	6	3
CONTRACT NO. 76L35				
ILLINOIS FED. AID PROJECT				



TYPICAL SECTION F.A.I. 55

EXISTING LEGEND

- ① EXISTING 10" P.C.C. PAVEMENT
- ② EXISTING SUB-BASE GRANULAR MATERIAL
- ③ EXISTING BITUMINOUS OVERLAY (VARIES 3" TO 8")
- ④ EXISTING STABILIZED SHOULDERS WITH BITUMINOUS OVERLAY
- ⑤ EXISTING PIPE UNDERDRAINS
- ⑥ EXISTING AGGREGATE SHOULDERS
- ⑦ EXISTING BITUMINOUS SHOULDERS

MODEL: D:\default
 FILE: NAME: P:\A\1108\AEBID\NTEG: I:\hrc\gpr\RWID\DOT\Documents\DOT Office\Bierfert 8\Projects\0876L35\CADD\data\CAD\psets\0876L35\st-ghbr.dgn

USER NAME = lewiska	DESIGNED -	REVISED -
	DRAWN -	REVISED -
PLOT SCALE = 99.8718' / in.	CHECKED -	REVISED -
PLOT DATE = 10/9/2018	DATE -	REVISED -

**STATE OF ILLINOIS
DEPARTMENT OF TRANSPORTATION**

TYPICAL SECTION

SCALE: NTS SHEET NO. OF SHEETS STA. TO STA.

F.A.I. RTE.	SECTION	COUNTY	TOTAL SHEETS	SHEET NO.
55	60-(1,2,3)CJS-1	MADISON	6	4
CONTRACT 76L35				
FED. ROAD DIST. NO.		ILLINOIS FED. AID PROJECT		

CRACK SEALING HMA PAVEMENT SCHEDULE									PAVEMENT MARKING				
LOCATION			TRANSVERSE CRACK				LONGITUDINAL CRACK	CRACK ROUTING (PAVEMENT)	CRACK FILLING	COMMENTS	THERMOPLASTIC 6"	SHORT TERM 4"	SHORT TERM REMOVAL SQ FT
			INSIDE SHOULDER	PASSING LANE	DRIVING LANE	OUTSIDE SHOULDER							
SOUTH END, NORTHBOUND													
669+85	TO	318+14					35171	35171	11606.4	NB CENTERLINE	8790	3196	1065.33
316+37	TO	248+51					6786	6786	2239.4	NB CENTERLINE	1700	616	205.33
669+85			4	12	12	10		38	12.5	265' NORTH OF MM 31			
648+91			4	12	12	10		38	12.5				
640+00				12	12			24	7.9				
626+40					12	10		22	7.3				
619+50					12			12	4.0				
568+50	TO	563+79					471	474	156.4	EXIT #33 EXIT RAMP			
555+10				12	12			24	7.9				
542+46	TO	534+65					781	783	258.4	EXIT #33 ENTRANCE RAMP			
519+49			4	12	12	10		38	12.5				
464+42					12			12	4.0				
394+78				12				12	4.0				
386+18					12	10		22	7.3				
380+24	TO	374+38					586	599	197.7	EXIT #37 EXIT RAMP			
352+47	TO	342+57					990	1007	332.3	EXIT #37 ENTRANCE RAMP			
318+14	TO	316+37	BRIDGE OMISSION										
248+51			4	12	12	10		38	12.5				
NORTH END, SOUTHBOUND													
249+70	TO	318+26					6856	6856	2262.5	SB CENTERLINE	1720	624	208
320+04	TO	671+73					35169	35169	11605.8	SB CENTERLINE	8790	3196	1065.33
249+70			4	12	12	10		38	12.5	243' NORTH OF MM 39			
262+61					12			12	4.0				
265+02					12			12	4.0				
284+88					12			12	4.0				
293+37					12			12	4.0				
294+41					12			12	4.0				
318+26	TO	320+04	BRIDGE OMISSION										
320+19				12	12			24	7.9				
322+05					12			12	4.0				
323+65				12				12	4.0				
323+67					12			12	4.0				
339+73				12				12	4.0				
343+35	TO	347+93					458	461	152.1	EXIT #37 EXIT RAMP			
360+61			4	12	12	10		38	12.5				
365+43			4	12	12	10		38	12.5				
375+26	TO	383+23					797	797	263.0	EXIT #37 ENTRANCE RAMP			
407+79			4	12	12	10		38	12.5				
408+48				12				12	4.0				
411+26				12				12	4.0				
412+11			4	12	12	10		38	12.5				
520+28			4	12	12	10		38	12.5				
534+11	TO	538+89					478	481	158.7	EXIT #33 EXIT RAMP			
547+28			4	12	12	10		38	12.5				
554+70				12	12			24	7.9				
556+09	TO	566+90					1081	1093	360.7	EXIT #33 ENTRANCE RAMP			
641+63			4	12	12	10		38	12.5				
671+73			4	12	12	10		38	12.5				
TOTAL =								90479	29858.07		21000	7632	2544

MODEL: Default
 FILE: \\mhc-pw\pww\DOT\Documents\DOT Office\Bierfert\B\Projects\0876L35\CADData\CAD\Sheet\0876L35-sht-palm.dgn

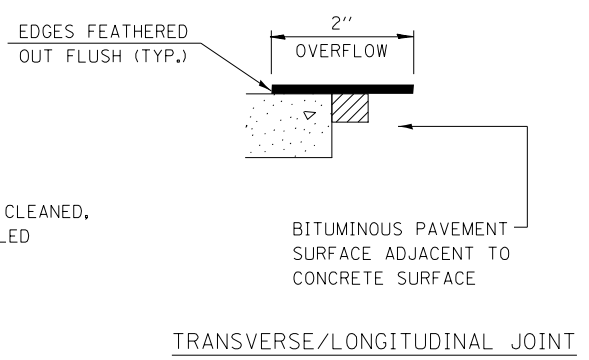
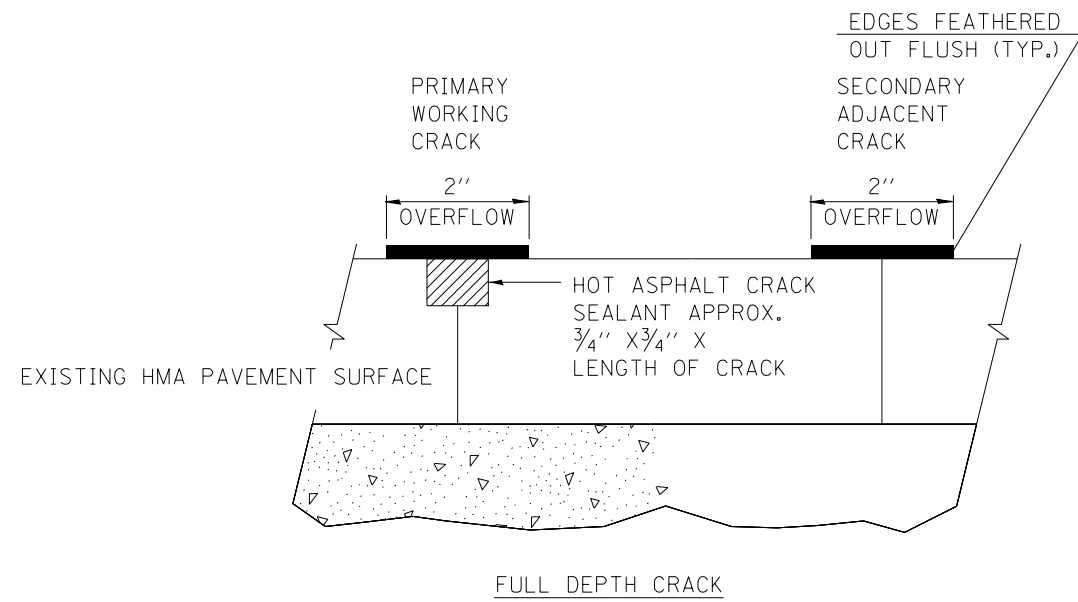
USER NAME = lewiska	DESIGNED -	REVISED -
	DRAWN -	REVISED -
PLOT SCALE = 99.8718' / in.	CHECKED -	REVISED -
PLOT DATE = 10/9/2018	DATE -	REVISED -

**STATE OF ILLINOIS
DEPARTMENT OF TRANSPORTATION**

SCHEDULES

SCALE: NTS SHEET NO. OF SHEETS STA. TO STA.

F.A.I. RTE.	SECTION	COUNTY	TOTAL SHEETS	SHEET NO.
55	60-(1,2,3)CJS-1	MADISON	6	5
CONTRACT 76L35				
FED. ROAD DIST. NO. ILLINOIS FED. AID PROJECT				



CRACK & JOINT SEALING DETAILS

MODEL: D:\default
 FILE: NAME: P:\A\1108\AEBID\NTEG: I:\hrc\p\p\WIDOT\Documents\DOT Office\Bierfert 8\Projects\0876L35\CADD\data\CAD\p\eres\0876L35\sch-pabr.dgn

USER NAME = lewisko	DESIGNED -	REVISED -
	DRAWN -	REVISED -
PLOT SCALE = 99.8718 ' / in.	CHECKED -	REVISED -
PLOT DATE = 10/9/2018	DATE -	REVISED -

STATE OF ILLINOIS
DEPARTMENT OF TRANSPORTATION

CRACK & JOINT SEALING DETAIL			
SCALE: NTS	SHEET NO.	OF SHEETS	STA. TO STA.

F.A.I. RTE.	SECTION	COUNTY	TOTAL SHEETS	SHEET NO.
55	60-(1,2,3)CJS-1	MADISON	6	6
CONTRACT 76L35				
FED. ROAD DIST. NO.		ILLINOIS FED. AID PROJECT		