

013

01-18-2019 LETTING ITEM 013

STATE OF ILLINOIS
DEPARTMENT OF TRANSPORTATION

F.A.P. RTE.	SECTION	COUNTY	TOTAL SHEETS	SHEET NO.
623	130,311RS-4	LASALLE	25	1
ILLINOIS CONTRACT NO. 66E99				

INDEX OF SHEETS

- 1 COVER SHEET
- 2 GENERAL NOTES
- 3-6 SUMMARY OF QUANTITIES
- 7-8 TYPICAL SECTIONS
- 9-13 SCHEDULES
- 14 16 PROJECT LAYOUT
- 17-18 DETECTOR LOOP INSTALLATION PLANS
- 19-25 DETAILS

HIGHWAY STANDARDS

- 000001-07 STANDARD SYMBOLS ABBREVIATIONS AND PATTERNS
- 001006 DECIMAL OF AN INCH AND OF A FOOT
- 406201-01 MAILBOX TURNOUT
- 642006 SHOULDER RUMBLE STRIPS, 8 INCH
- 667101-02 PERMANENT SURVEY MARKERS
- 701001-02 OFF-ROAD OPERATIONS 2L, 2W, MORE THAN 15' AVIARY
- 701006-05 OFF-ROAD OPERATIONS 2L, 2W, 15' TO 24' FROM PAVEMENT EDGE
- 701306-04 LANE CLOSURE, 2L, 2W, SLOW MOVING OPERATIONS DAY ONLY, FOR SPEEDS \geq 45 MPH
- 701311-03 LANE CLOSURE, 2L, 2W, MOVING OPERATIONS - DAY ONLY
- 701336-07 LANE CLOSURE, 2L, 2W, WORK AREAS IN SERIES, FOR SPEEDS \geq 45 MPH
- 701901-08 TRAFFIC CONTROL DEVICES
- 780001-05 TYPICAL PAVEMENT MARKINGS
- 781001-04 TYPICAL APPLICATIONS RAISED REFLECTIVE PAVEMENT MARKERS

PROPOSED HIGHWAY PLANS

FAP 623 (US 6)
SECTION (30,31)RS-4
PROJECT STP DXBE(024)
3P MILLING, RESURFACING & PATCHING
LASALLE COUNTY

C-93-006-16

PROJECT BEGINS
STA. 279 + 80

STA. EQUATION:
STA. 470 + 57.97 (BK) =
STA. 1431 + 24.18 (AH)

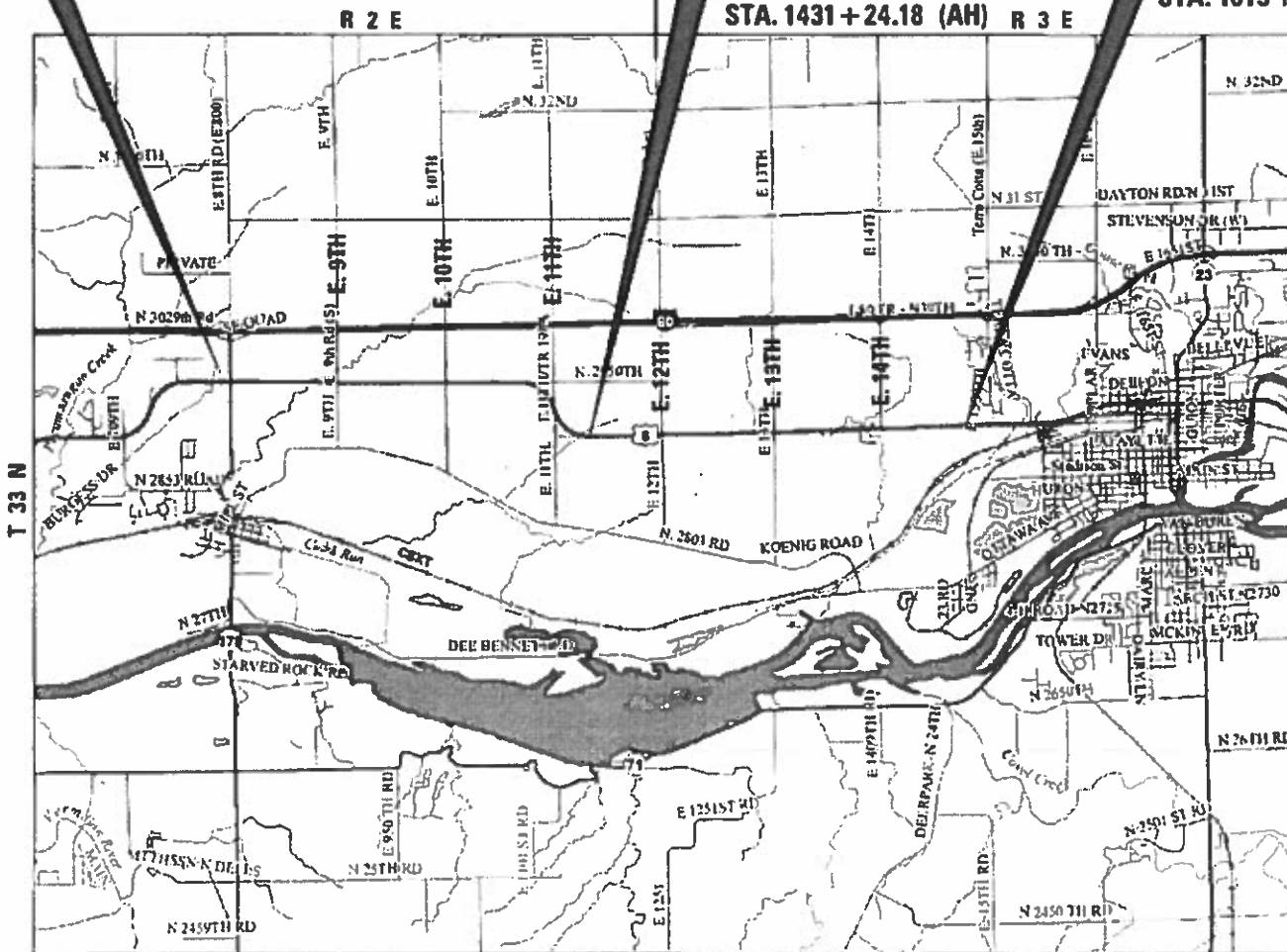
PROJECT ENDS
STA. 1615 + 92.70



FULL SIZE PLANS HAVE BEEN PREPARED USING STANDARD ENGINEERING SCALES. REDUCED SIZED PLANS WILL NOT CONFORM TO STANDARD SCALES. IN MAKING MEASUREMENTS ON REDUCED PLANS, THE ABOVE SCALES MAY BE USED.

J.U.L.I.E.
JOINT UTILITY LOCATION INFORMATION FOR EXCAVATION
1-800-892-0123
OR 811

PROJECT ENGINEER: BRAD DUNCAN, P.E.
UNIT CHIEF: DARCY CARPENTER
TOWNSHIPS: UTICA & OTTAWA
CONTRACT NO. 66E99



GROSS LENGTH = 37,546 FT. = 7.11 MILES
NET LENGTH = 37,546 FT. = 7.11 MILES



D-93-011-16

RURAL MINOR ARTERIAL
2017 ADT = 6,000
P.V. = 87.9%
S.U. = 5.4%
M.U. = 6.7%

STATE OF ILLINOIS
DEPARTMENT OF TRANSPORTATION

SUBMITTED 10-18-2018
[Signature]
REGIONAL ENGINEER

Dec 7 2018
[Signature]
ENGINEER OF DESIGN AND ENVIRONMENT

Dec 7 2018
[Signature]
DIRECTOR OF HIGHWAYS PROJECT IMPLEMENTATION

PRINTED BY THE AUTHORITY
OF THE STATE OF ILLINOIS

GENERAL NOTES

THE THICKNESS OF HMA SHOWN ON THE PLANS IS THE NOMINAL THICKNESS. DEVIATIONS FROM THE NOMINAL THICKNESS WILL BE PERMITTED WHEN SUCH DEVIATIONS OCCUR DUE TO IRREGULARITIES IN THE EXISTING SURFACE OR BASE ON WHICH THE HMA IS PLACED.

THE HMA SURFACE OF ALL MAILBOX TURNOUTS, PRIVATE ENTRANCES, COMMERCIAL ENTRANCES, AND SIDE ROADS SHALL BE MADE NEATLY, IN A WORKMANLIKE MANNER, AND SHALL ACCURATELY CONFORM TO THE SHAPES AND DIMENSIONS SHOWN ON THE PLAN DETAILS. IF REQUIRED BY THE ENGINEER, THE CONTRACTOR SHALL SAW CUT THE HMA SURFACE TO CONFORM TO THE SHAPES AND DIMENSIONS SHOWN ON THE PLAN DETAILS. THIS WORK WILL BE INCLUDED IN THE COST OF THE HMA SURFACE.

EXCEPT AS NOTED ON THE PLANS, PAVEMENT GRADES SHOWN ARE AT THE TOP OF PAVEMENT SURFACES.

THE ENGINEER WILL BE THE SOLE JUDGE CONCERNING CURING TIME FOR THE VARIOUS HMA LIFTS.

FOR STABILIZATION, ALL TYPE III BARRICADES WILL REQUIRE A MINIMUM OF FOUR SAND BAGS PER BARRICADE.

ALL EXCAVATED MATERIAL, WHICH INCLUDES DIGGING OR GRADING OF ANY SOIL OR FILL MATERIAL, WITH THE EXCEPTION OF AGGREGATE FILLS, MUST BE INCORPORATED WITHIN THE IDOT RIGHT OF WAY DUE TO ENVIRONMENTAL DOCUMENTATION REQUIREMENTS.

ON EXISTING PAVEMENT WHICH MAY BE SUPERELEVATED, THE NEW HMA PAVEMENT SHALL BE BUILT WITH THE SAME SUPERELEVATION UNLESS NEW SUPERELEVATION RATES ARE GIVEN ON THE PLANS.

ALL ELEVATIONS REFERRING TO U.S.G.S. MEAN SEA LEVEL DATUM.

ANY REFERENCE TO A STANDARD IN THESE PLANS SHALL BE INTERPRETED TO MEAN THE EDITION AS INDICATED BY THE SUBNUMBER SHOWN IN THE LIST OF STANDARDS OR THE COPY INCLUDED IN THESE PLANS.

THE FOLLOWING RATES OF APPLICATION HAVE BEEN USED IN CALCULATING PLAN QUANTITIES:

GRANULAR MATERIALS	2.05	TONS / CU YD
HMA RESURFACING	112	LBS / SQ YD / IN
SHORT TERM PAVEMENT MARKING	10	FT /100 FT OF APPLICATION
MIX FOR CRACKS, JTS & FLGWYS	0.0003	TONS / SQ YD
LEVEL BINDER (HAND METHOD)	0.0005	TONS / SQ YD
SUPPLEMENTAL WATERING	3	GAL / SQ YD / APPLICATION
CALCIUM CHLORIDE	2	LB / SQ YD / APPLICATION
AGGREGATE DITCH CHECKS	5	TONS AGGREGATE

THE CONTRACTOR SHALL CONTACT JULIE AT LEAST 48 HOURS PRIOR TO EXCAVATION TO DETERMINE WHICH UTILITIES ARE IN THE AREA.

MEMBERS OF JULIE KNOWN TO BE WITHIN THE LIMITS OF THE IMPROVEMENT ARE: AT&T, COMCAST, IFIBER, NORTH UTICA, AND AMEREN

COMMITMENTS:

CALL TRAFFIC SIGNAL SECTION AT (815) 434-8506 WHEN WORKING AROUND US 6 AND IL 178 BECAUSE THE CAMERAS DETECT VEHICLES UP TO 1100 FEET ON US ROUTE 6.

STATE OF ILLINOIS
DEPARTMENT OF TRANSPORTATION
DISTRICT THREE
AS BUILT INFORMATION

SUPERVISING CONSTRUCTION FIELD ENGINEER

RESIDENT ENGINEER / TECHNICIAN

START & END DATES
OF CONSTRUCTION:

INSPECTORS:

STATE OF ILLINOIS
DEPARTMENT OF TRANSPORTATION
DISTRICT THREE

PREPARED BY: Tom Beaulieu
DISTRICT STUDIES & PLANS ENGINEER

DATE: 10-18-18

EXAMINED BY: Kyle Viduegas
DISTRICT CONSTRUCTION ENGINEER

Michael A. Spat
DISTRICT MATERIALS ENGINEER

Tom Beaulieu
DISTRICT OPERATIONS ENGINEER

FILE NAME :	USER NAME : carpenterdj	DESIGNED -	REVISED -	STATE OF ILLINOIS DEPARTMENT OF TRANSPORTATION	GENERAL NOTES				F.A.P. RTE.	SECTION	COUNTY	TOTAL SHEETS	SHEET NO.
pw:\11884EB\DOT\Illinois.gov\PK1001\Documents\DOT Offices\District 3\Projects\0366\EDR\DWG\0366\0366E99-shs-cover.dwg	EDR\DWG\0366\0366E99-shs-cover.dwg	CHECKED -	REVISED -						623	(30.3)RS-4	LASALLE	25	2
PLOT SCALE : 1/8" = 1' in.	CHECKED -	REVISED -	REVISED -						CONTRACT NO. 66E99				
PLOT DATE : 10/16/2018	DATE -	REVISED -	REVISED -						[ILLINOIS] FED. AID PROJECT				
				SCALE:	SHEET NO.	OF	SHEETS	STA.	TO STA.				

CODE NO.	ITEM	UNIT	TOTAL QUANTITY	CONSTR. CODE	
				80% FEDERAL	20% STATE
				ROADWAY	RURAL
40600290	BITUMINOUS MATERIALS (TACK COAT)	POUND	90075	90075	
40600400	MIXTURE FOR CRACKS, JOINTS, AND FLANGEWAYS	TON	39	39	
40600537	LEVELING BINDER (HAND METHOD), 1L-9.5FG, N70	TON	61	61	
40600637	LEVELING BINDER (MACHINE METHOD), 1L-9.5FG, N70	TON	5124	5124	
40600747	POLYMERIZED LEVELING BINDER (HAND METHOD), 1L-9.5FG, N90	TON	4	4	
40600847	POLYMERIZED LEVELING BINDER (MACHINE METHOD), 1L-9.5FG, N90	TON	323	323	
40600990	TEMPORARY RAMP	SQ YD	420	420	
40603340	HOT-MIX ASPHALT SURFACE COURSE, MIX "D", N70	TON	10247	10247	
40603545	POLYMERIZED HOT-MIX ASPHALT SURFACE COURSE, MIX "D", N90	TON	645	645	
40800050	INCIDENTAL HOT-MIX ASPHALT SURFACING	TON	476	476	
44000158	HOT-MIX ASPHALT SURFACE REMOVAL, 2 1/4"	SQ YD	133452	133452	
44200050	WELDED WIRE REINFORCEMENT	SQ YD	123	123	
44201007	CLASS B PATCHES, TYPE II, 13 INCH	SQ YD	365	365	
44201011	CLASS B PATCHES, TYPE III, 13 INCH	SQ YD	96	96	

FILE NAME =	USER NAME = carpenterdj	DESIGNED - _____	REVISED - _____
pw:\IL\084EBIDINTEG.illinois.gov\PI\DOT\Documents\DOT Offices\District 3\Projects\0366E99\Drawings\0366E99-ght-500.dgn		DESIGNED - _____	REVISED - _____
Default	PLOT SCALE = 100.0000' / in.	CHECKED - _____	REVISED - _____
	PLOT DATE = 10/16/2018	DATE - _____	REVISED - _____

**STATE OF ILLINOIS
DEPARTMENT OF TRANSPORTATION**

SUMMARY OF QUANTITIES

SCALE: _____ SHEET 1 OF 4 SHEETS STA. _____ TO STA. _____

F.A.P. RTE.	SECTION	COUNTY	TOTAL SHEETS	SHEET NO.
623	(30,31)RS-4	LASALLE	25	3
			CONTRACT NO. 66E99	
ILLINOIS FED. AID PROJECT				

CODE NO.	ITEM	UNIT	TOTAL QUANTITY	80% FEDERAL 20% STATE	
				ROADWAY	
				0005	RURAL
44201013	CLASS B PATCHES, TYPE IV, 13 INCH	SQ YD	27	27	
44201299	DOWEL BARS 1 1/2"	EACH	940	940	
44213200	SAW CUTS	FOOT	2424	2424	
44213204	TIE BARS 3/4"	EACH	10	10	
48102100	AGGREGATE WEDGE SHOULDER, TYPE B	TON	1404	1404	
64200108	SHOULDER RUMBLE STRIPS, 8 INCH	FOOT	73193	73193	
* 66700205	PERMANENT SURVEY MARKERS, TYPE I	EACH	11	11	
67000400	ENGINEER'S FIELD OFFICE, TYPE A	CAL MO	2	2	
67100100	MOBILIZATION	L SUM	1	1	
70100460	TRAFFIC CONTROL AND PROTECTION, STANDARD 701306	L SUM	1	1	
70100600	TRAFFIC CONTROL AND PROTECTION, STANDARD 701336	L SUM	1	1	
70300100	SHORT TERM PAVEMENT MARKING	FOOT	11517	11517	
70300150	SHORT TERM PAVEMENT MARKING REMOVAL	SQ FT	1280	1280	
* 70300220	TEMPORARY PAVEMENT MARKING - LINE 4"	FOOT	153554	153554	

* SPECIALTY ITEM

FILE NAME =	USER NAME = carpenterdj	DESIGNED - _____	REVISED - _____
pw:\IL\084EBIDINTEG.illinois.gov\PIWIDOT\Documents\DOT Offices\District 3\Projects\0366E99\Drawings\0366E99\Sheet-S00.dwg		DESIGNED - _____	REVISED - _____
Default	PLOT SCALE = 100.0000' / in.	CHECKED - _____	REVISED - _____
	PLOT DATE = 10/16/2018	DATE - _____	REVISED - _____

**STATE OF ILLINOIS
DEPARTMENT OF TRANSPORTATION**

SUMMARY OF QUANTITIES

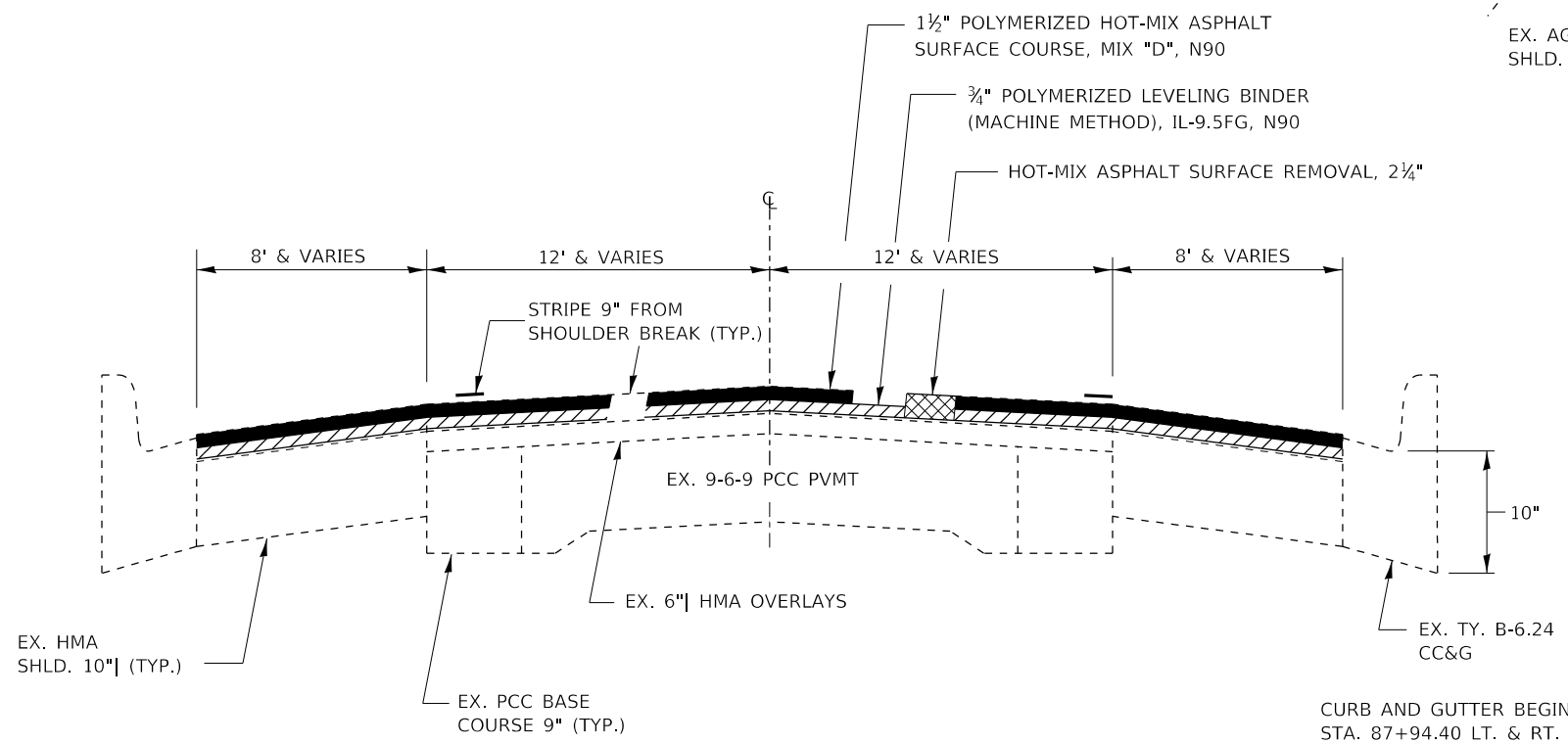
SCALE: _____ SHEET 2 OF 4 SHEETS STA. _____ TO STA. _____

F.A.P. RTE.	SECTION	COUNTY	TOTAL SHEETS	SHEET NO.
623	(30,31)RS-4	LASALLE	25	4
			CONTRACT NO. 66E99	
ILLINOIS FED. AID PROJECT				

CODE NO.	ITEM	UNIT	TOTAL QUANTITY	80% FEDERAL 20% STATE	
				ROADWAY	
				0005	RURAL
* 81400700	HANDHOLE, PORTLAND CEMENT CONCRETE	EACH	7	7	
* 81400720	DOUBLE HANDHOLE, PORTLAND CEMENT CONCRETE	EACH	1	1	
* 85000200	MAINTENANCE OF EXISTING TRAFFIC SIGNAL INSTALLATION	EACH	1	1	
* 87301305	ELECTRIC CABLE IN CONDUIT, LEAD-IN, NO. 14 1 PAIR	FOOT	2216	2216	
* 88500100	INDUCTIVE LOOP DETECTOR	EACH	8	8	
* 88600100	DETECTOR LOOP, TYPE I	FOOT	1797	1797	
X0326898	CENTER LINE - RUMBLE STRIP - 16"	FOOT	5377	5377	
X0327980	PAVEMENT MARKING REMOVAL - WATER BLASTING	SQ FT	63931	63931	
* X8950114	MODIFY EXISTING CONTROLLER AND CABINET	EACH	1	1	
Z0030850	TEMPORARY INFORMATION SIGNING	SQ FT	42	42	
Z0033700	LONGITUDINAL JOINT SEALANT	FOOT	38388	38388	
Z0076600	TRAINEES	HOUR	1,000	1,000	
Z0034105	MATERIAL TRANSFER DEVICE	TON	16339	16339	
Z0076604	TRAINEES TRAINING PROGRAM GRADUATE	HOUR	1,000	1,000	

* SPECIALTY ITEM

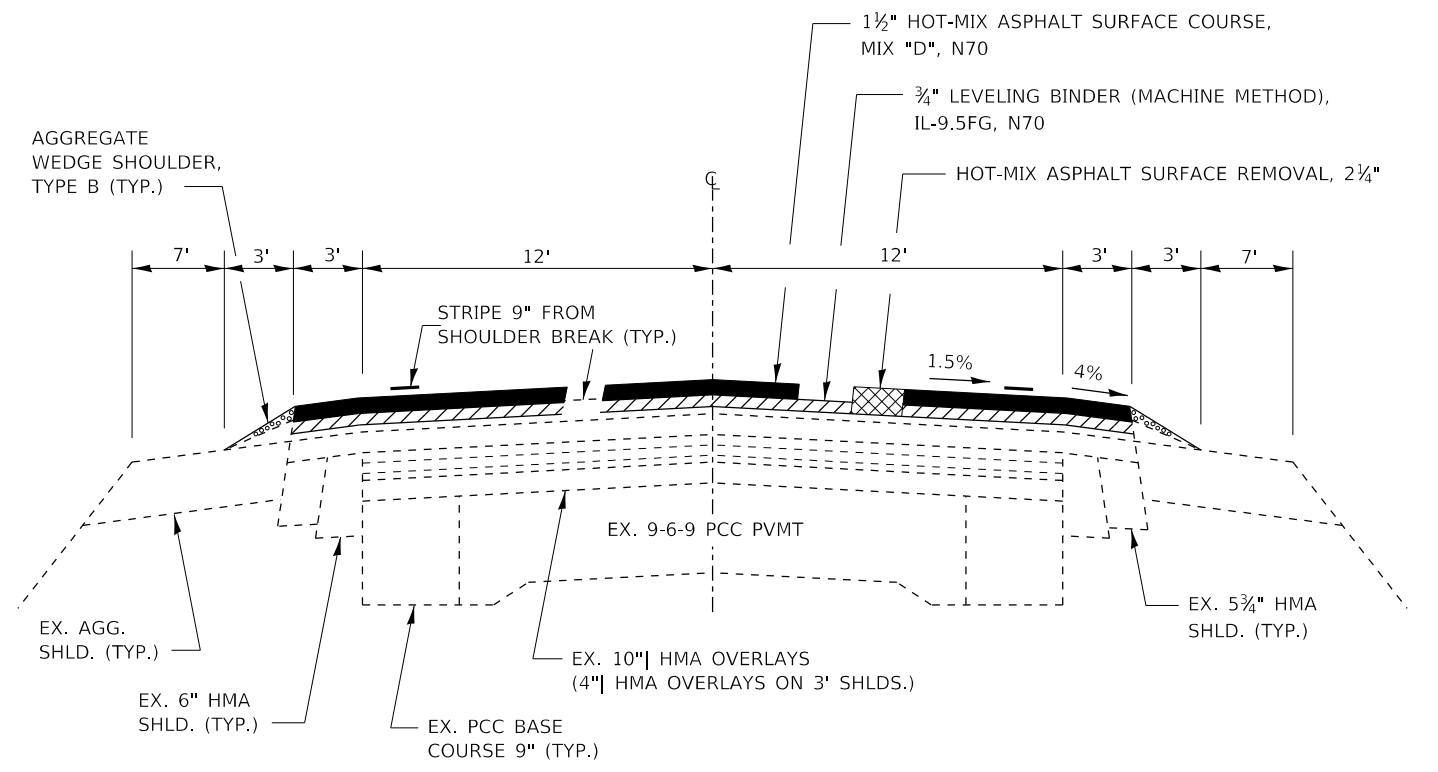
FILE NAME =	USER NAME = carpenterdj	DESIGNED - _____	REVISED - _____	STATE OF ILLINOIS DEPARTMENT OF TRANSPORTATION	SUMMARY OF QUANTITIES				F.A.P. RTE.	SECTION	COUNTY	TOTAL SHEETS	SHEET NO.
pw:\IL\084EBIDINTEG.illinois.gov\PI\DOT\Documents\DOT Offices\District 3\Projects\0366\DRAWING\DATA\EAD\Sheets\0366E99-shr-S00.dwg		CHECKED - _____	REVISED - _____		623	(30,31)RS-4	LASALLE	25	6				
Default	PLOT SCALE = 100.0000' / in.	DATE - _____	REVISED - _____		SCALE: _____ SHEET 4 OF 4 SHEETS STA. _____ TO STA. _____				CONTRACT NO. 66E99				
	PLOT DATE = 10/16/2018	DATE - _____	REVISED - _____		ILLINOIS FED. AID PROJECT								



TYPICAL SECTION NO. 1

U.S. RTE. 6
 STA. 279+80.00 TO STA. 285+75.37

IL RTE. 178
 STA. 16+80 TO STA. 19+50
 STA. 20+49.61 TO STA. 23+33



TYPICAL SECTION NO. 2

U.S. RTE. 6
 STA. 288+80 TO STA. 421+75

NOTE; MILLING THROUGH CONCRETE PATCHES SHALL BE INCLUDED IN THE COST OF HMA SURFACE REMOVAL, 2 1/4".

CURB AND GUTTER BEGINS
 STA. 87+94.40 LT. & RT.

CURB AND GUTTER ENDS
 STA. 92+47.40 LT. & RT.

HMA MIXTURE REQUIREMENT TABLE					
LOCATION(S):	US 6 FROM IL 178 TO OTTAWA	US 6 FROM IL 178 TO OTTAWA	ENTIRE PROJECT	INTERSECTION OF IL 178 AND US 6	INTERSECTION OF IL 178 AND US 6
MIXTURE USE(S):	HMA LEVEL BINDER	HMA SURFACE	HMA INCIDENTAL	HMA LEVEL BINDER	HMA SURFACE
BINDER GRADE (PG):	PG 64-22	PG 64-22	PG 64-22	SBS PG 70-28	SBS PG 70-28
DESIGN AIR VOIDS:	4.0% @ N70	4.0% @ N70	4.0% @ N50	4.0% @ N90	4.0% @ N90
MIXTURE COMPOSITION: (MIXTURE GRADATION)	IL 9.5 FG	IL 9.5	IL 9.5	IL 9.5 FG	IL 9.5
FRICTION AGGREGATE:	NA	MIXTURE D	NA	NA	MIXTURE D
MIXTURE WEIGHT:	112.0 LB/SY/IN	112.0 LB/SY/IN	112.0 LB/SY/IN	112.0 LB/SY/IN	112.0 LB/SY/IN
QUALITY MANAGEMENT PROGRAM:	QCP	QCP	QCQA	QCQA	QCQA
SUBLOT SIZE:	1000	1000	NA	NA	NA
DENSITY TEST METHOD:	% GROWTH CURVE	CORES	SATISFACTION OF ENGINEER	% GROWTH CURVE	CORES

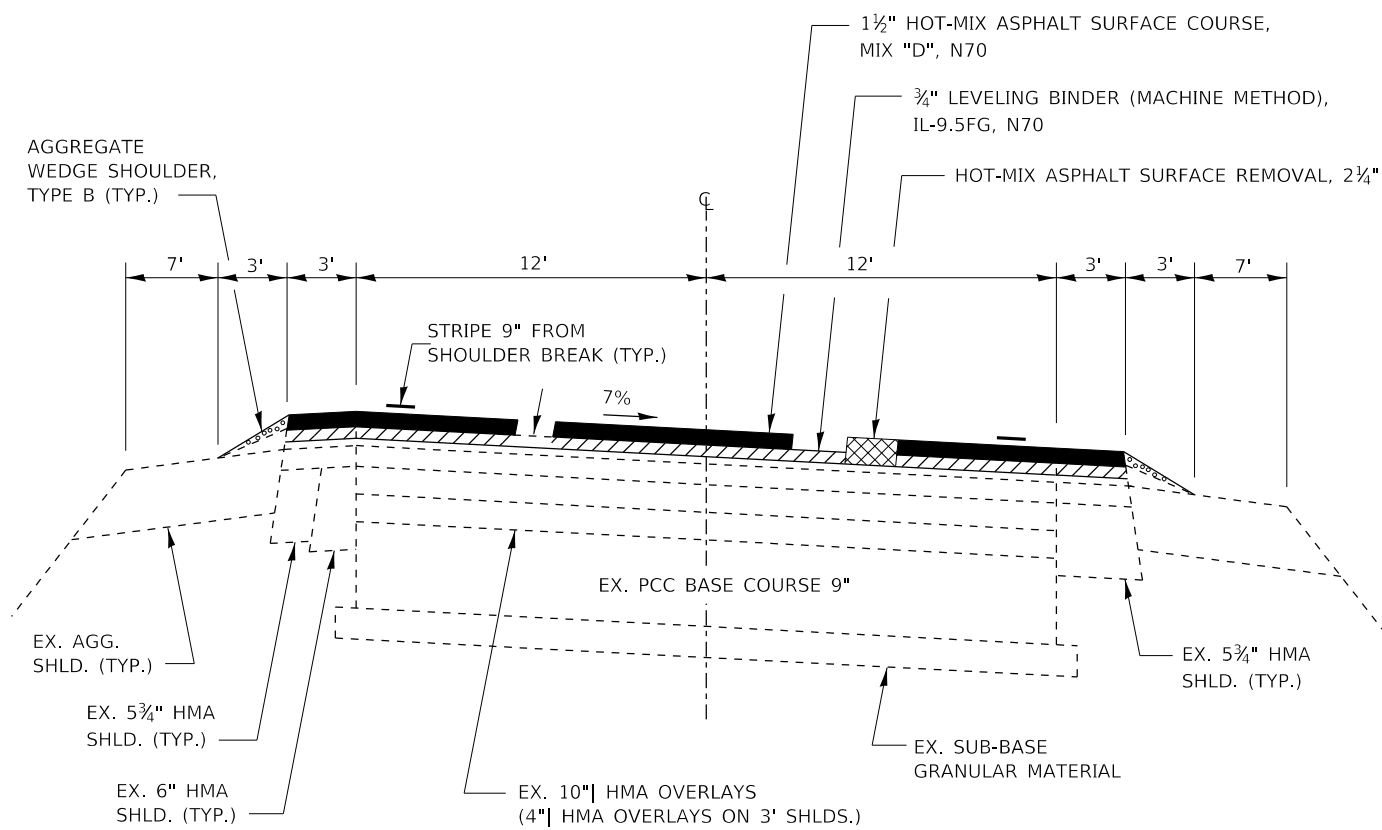
FILE NAME =	USER NAME = carpenterj	DESIGNED -	REVISED -
pw:\IL04EB\INTEG\Illinois.gov\PWIDOT\Documents\DOT Offices\District 3\Projects\0366E99\CADData\CADsheets\0366E99\Typical and detail.dgn		DRAWN -	REVISED -
PLOT SCALE = 100,0000' / in.	CHECKED -	REVISED -	REVISED -
Default	DATE -	REVISED -	REVISED -

STATE OF ILLINOIS
 DEPARTMENT OF TRANSPORTATION

TYPICAL SECTIONS

SCALE: SHEET 1 OF 2 SHEETS STA. TO STA.

F.A.P. RTE.	SECTION	COUNTY	TOTAL SHEETS	SHEET NO.
623	(30,31)RS-4	LASALLE	25	7
CONTRACT NO. 66E99				
ILLINOIS FED. AID PROJECT				

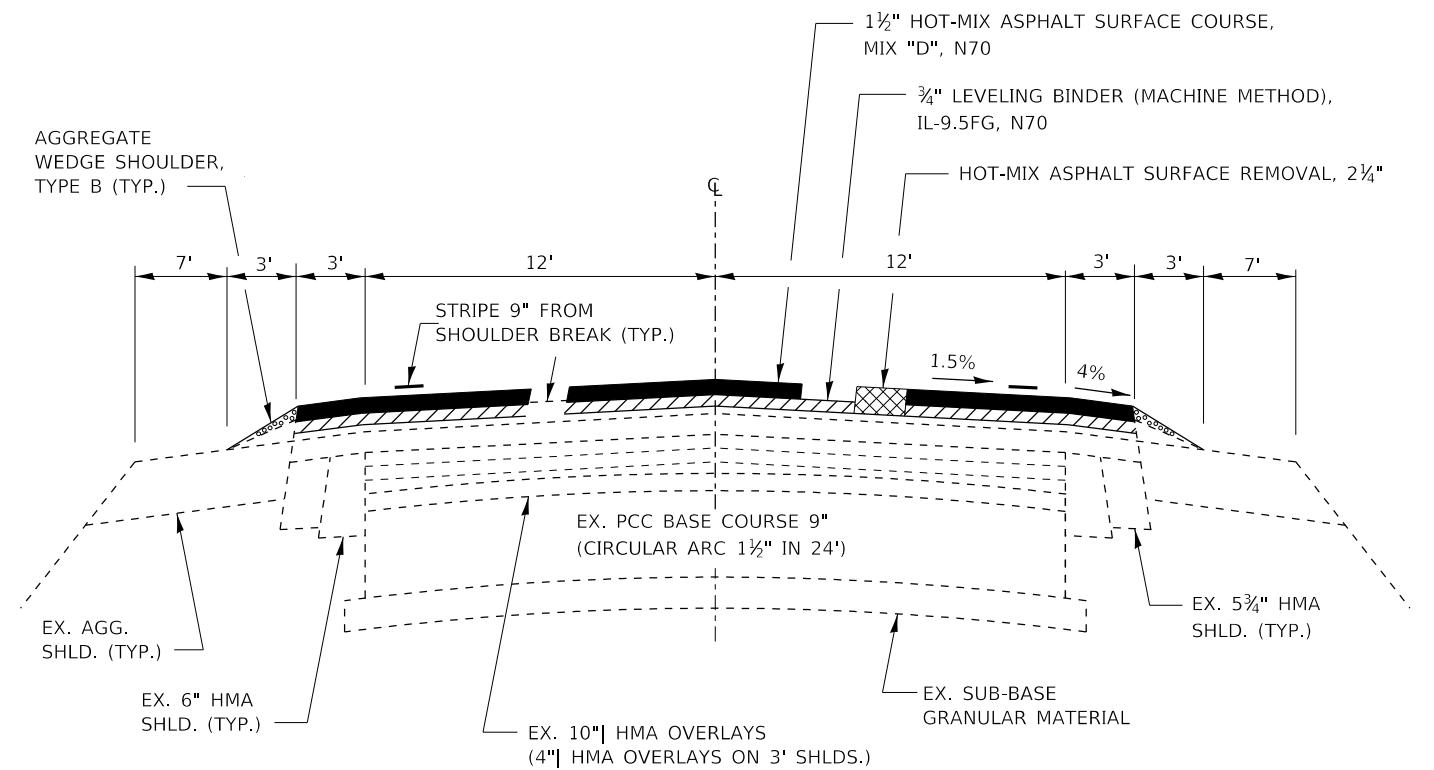


TYPICAL SECTION NO. 3

U.S. RTE. 6

STA. 424+97.11 TO STA. 445+56.66 (CURVE RIGHT)
 STA. 449+81.38 TO STA. 470+57.97 (CURVE LEFT)

STATION EQUATION: STA. 470+57.97 (BK) = STA. 1431+24.18 (AH)



TYPICAL SECTION NO. 4

U.S. RTE. 6

STA. 421+75 TO STA. 424+97.11
 STA. 445+56.66 TO STA. 449+81.38
 STA. 1431+24.18 TO STA. 1615+92.70

NOTE: MILLING THROUGH CONCRETE PATCHES SHALL BE INCLUDED IN THE COST OF HMA SURFACE REMOVAL, 2 1/4".

FILE NAME =	USER NAME = carpenterj	DESIGNED -	REVISED -	STATE OF ILLINOIS DEPARTMENT OF TRANSPORTATION	TYPICAL SECTIONS	F.A.P. RTE.	SECTION	COUNTY	TOTAL SHEETS	SHEET NO.	
pw:\IL04EB\INTEG\Illinois.gov\PWIDOT\Documents\DOT Offices\District 3\Projects\0366E99\CADData\CADsheets\0366E99\Drawings\0366E99\0366E99.dgn		CHECKED -	REVISED -			623	(30,31)RS-4	LASALLE	25	8	
PLOT SCALE = 100,0000' / in.		DATE -	REVISED -			CONTRACT NO. 66E99					
Default						SCALE:	SHEET 2 OF 2 SHEETS	STA.	TO STA.	ILLINOIS FED. AID PROJECT	

MAINLINE SCHEDULE

LOCATION	LENGTH	AVG PVMT WIDTH	PVMT AREA	HMA SURF CSE N70	HMA SURF CSE N90	LEVEL BINDER (MM) N70	LEVEL BINDER (MM) N90	LEVEL BINDER (HM) N70	LEVEL BINDER (HM) N90	HMA SURF REM 2-1/4"	TEMP RAMP	BIT MAT (TACK COAT)	LONG JOINT SEAL	MIX FOR CRACKS, JOINTS & FLGWYS	SHLDR RUMBLE STRIPS 8"	CENTERLINE RUMBLE STRIPS	AGG SHLD TY B
STA TO STA	FOOT	FOOT	SQ YD	TON	TON	TON	TON	TON	TON	SQ YD	SQ YD	POUNDS	FOOT	TON	FOOT	FOOT	TON
US 6																	
288+80 TO 418+29.32	12949.32	30	43,164	3625.8		1812.9		21.58		43164.4		29136	12949.32	12.95	25898.64		491.6
418+29.32 TO 470+57.97	5228.65	30	17,429	1464.0		732.0		8.71		17428.8		11764	5228.65	5.23	10457.3	5228.65	198.5
470+57.97 BK TO 1431+24.18 AH	STA EQ																
1431+24.18 TO 1432+72.76	148.58	30	495	41.6		20.8		0.25		495.3		334	148.58	0.15	297.16	148.58	5.6
1432+72.76 TO 1615+42.7	18,270	30	60,900	5115.6		2557.8		30.45		60899.8	25.00	41107	18269.94	18.27	36539.88		693.6
IL 178 & US 6 INTERSECTION																	
WEST LEG																	
282+80 TO 279+80	300	39	1,300			109.2		54.6		1300.0	32.50	878	300	0.39			
EAST LEG																	
288+80 TO 282+80	600	35	2,333			196.0		98.0		2333.3	32.50	1575	600	0.7			11.4
SOUTH LEG																	
20+00 TO 23+22	322	37	1,324			111.2		55.6		1323.8	30.83	894	322	0.4			3.4
NORTH LEG																	
14+30 TO 20+00	570	43	2,723			228.8		114.4		2723.3	35.83	1838	570	0.82			
TOTAL				10,247	645	5,124	323	61	4	129669	156.7	87,526	38,388	39	73193	5377	1404

NOTE NO MTD WILL BE ALLOWED OVER SN 050-2590, SEE SPECIAL PROVISION

SIDEROAD SCHEDULE

STATION	SIDE	DESCRIPTION	MATERIAL	WIDTH	AREA	HMA SURFACE REMOVAL 2 1/4"	INCIDENTAL HMA SURFACING	BIT TACK COAT	TEMP RAMPS
				FOOT	SQ FT	SQ YD	TON	POUND	SQ YD
335+51.4	LT	E 9TH RD	HMA	22	1005	111.7	14.1	75.4	18.3
335+55.8	RT	E 9TH RD	HMA	20	975	108.3	13.7	73.1	16.7
388+51	LT	E 10TH RD	HMA	20	975	108.3	13.7	73.1	16.7
388+55	RT	E 10TH RD	HMA	20	975	108.3	13.7	73.1	16.7
446+50	LT	E 11TH RD	HMA	20	975	108.3	13.7	73.1	16.7
449+00	RT	E 11TH RD	HMA	20	975	108.3	13.7	73.1	16.7
464+50	RT	29TH RD	HMA	18	945	105.0	13.2	70.9	15
1467+48.1	LT	CH 9 (E 12TH RD)	HMA	22	1005	111.7	14.1	75.4	18.3
1467+51.5	RT	TR 220 (E 12TH RD)	HMA	20	975	108.3	13.7	73.1	16.7
1523+18.4	LT	E 13TH RD	HMA	20	975	108.3	13.7	73.1	16.7
1523+22.1	RT	E 13TH RD	HMA	20	975	108.3	13.7	73.1	16.7
1565+42	LT	OAK BLUFF	HMA	25	1050	116.7	14.7	78.8	20.8
1565+79.8	RT	1380TH	HMA	24	1035	115.0	14.5	77.6	20
1572+45	LT	TIMBER CREEK LANE	HMA	24	1035	115.0	14.5	77.6	20
1575+85.8	LT	E 14TH RD	HMA	20	975	108.3	13.7	73.1	16.7
TOTALS						1650	208	1114	263

ENTRANCE SCHEDULE								
STA	SIDE	DESCRIPTION	EXIST MAT	WIDTH	AREA	INC HMA SURF	BIT TACK COAT	HMA SURF REM 2 1/4"
				FOOT	SQ YD	TON	POUND	SQ YD
294+48	LT	MBTO	HMA	10	62.2	7.8	42.0	62.2
294+63	LT	PE	HMA	20	33.3	4.2	22.5	33.3
296+15	LT	FE	GRASS	30				
296+23	RT	FE	GRASS	25				
307+00	RT	FE	GRASS	14				
313+56	RT	PE	AGG	14	26.7	3.4	18.0	26.7
313+58	LT	MBTO	HMA	10	62.2	7.8	42.0	62.2
317+38	RT	PE	HMA	12	24.4	3.1	16.5	24.4
317+39	LT	MBTO	HMA	10	62.2	7.8	42.0	62.2
320+61	LT	MBTO	HMA	10	62.2	7.8	42.0	62.2
320+81	LT	PE	HMA	14	26.7	3.4	18.0	26.7
323+14	RT	PE	HMA	12	24.4	3.1	16.5	24.4
323+71	LT	MBTO	HMA	10	62.2	7.8	42.0	62.2
328+00	LT	MBTO	HMA	10	62.2	7.8	42.0	62.2
328+10.5	RT	PE	AGG	18	31.1	3.9	21.0	31.1
328+98	RT	PE	AGG	18	31.1	3.9	21.0	31.1
329+70.5	RT	PE	AGG	18	31.1	3.9	21.0	31.1
329+73	LT	MBTO	HMA	10	62.2	7.8	42.0	62.2
329+91	LT	PE	HMA	14	26.7	3.4	18.0	26.7
333+87	LT	CE	AGG	30	44.4	5.6	30.0	44.4
339+60.95	RT	CE	AGG	25	38.9	4.9	26.3	38.9
342+17	RT	FE	GRASS	20				
349+07	LT	FE	GRASS	20				
351+87	RT	FE	AGG	12	24.4	3.1	16.5	24.4
357+79	LT	MBTO	HMA	10	62.2	7.8	42.0	62.2
357+93	LT	PE	AGG	12	24.4	3.1	16.5	24.4
362+03	LT	FE	GRASS	16				
362+18	RT	FE	GRASS	14				
371+50	LT	FE	GRASS	14				
378+54.3	RT	FE	GRASS	16				
381+80	LT	FE	GRASS	14				
395+54	RT	FE	GRASS	16				
401+79	LT	FE	GRASS	16				
413+18	LT	PE	AGG	12	24.4	3.1	16.5	24.4
414+79	LT	PE	AGG	12	24.4	3.1	16.5	24.4
414+81	RT	FE	GRASS	16				
421+90	LT	FE	GRASS	14				
423+11	RT	PE/MBTO	HMA	22	12	1.5	8.1	12.0
423+11	LT	MBTO	HMA	10	62.2	7.8	42.0	62.2
SUBTOTAL						127	681	1008

ENTRANCE SCHEDULE								
STA	SIDE	DESCRIPTION	EXIST MAT	WIDTH	AREA	INC HMA SURF	BIT TACK COAT	HMA SURF REM 2 1/4"
				FOOT	SQ YD	TON	POUND	SQ YD
426+09.5	RT	PE/MBTO	AGG	22	116	14.6	78.3	116.0
426+00	LT	MBTO	HMA	10	62.2	7.8	42.0	62.2
431+00	LT	PE	HMA	20	33.3	4.2	22.5	33.3
435+24	LT	PE	AGG	12	24.4	3.1	16.5	24.4
435+75	RT	FE	GRASS	16				
453+92	RT	PE	HMA	16	28.9	3.6	19.5	28.9
460+06	LT	FE	GRASS	16				
460+06	RT	FE	GRASS	16				
1433+02	LT	MBTO/FE	HMA/GRASS	10	62.2	7.8	42.0	62.2
1433+02	RT	PE	AGG	12	24.4	3.1	16.5	24.4
1440+40	RT	CE	CONC	228	103			
1451+45.5	LT	FE	AGG	16				
1451+46.5	RT	FE	AGG	16				
1452+77	RT	CE	CONC	262	118			
1462+23	RT	FE	AGG	20				
1465+62	LT	MBTO	HMA	10	62.2	7.8	42.0	62.2
1465+91	LT	PE	AGG	14	26.7	3.4	18.0	26.7
1482+65	LT	FE	AGG	16				
1484+05	RT	PE/MBTO	AGG	10	62.2	7.8	42.0	62.2
1501+06.5	LT	PE	AGG	12	24.4	3.1	16.5	24.4
1536+35	RT	FE	AGG	10				
1541+22	RT	FE	GRASS	16				
1541+32	LT	PE	AGG	12	24.4	3.1	16.5	24.4
1541+55	RT	MBTO	HMA	10	62.2	7.8	42.0	62.2
1549+65	RT	PE	HMA	14	8	1.0	5.4	8.0
1549+76	LT	FE	GRASS	16				
1550+00	RT	PE	HMA	14	26.7	3.4	18.0	26.7
1551+20	RT	PE	HMA	12	24.4	3.1	16.5	24.4
1553+14	RT	FE	GRASS	16				
1561+39.5	LT	PE	HMA	12				
1561+74	RT	PE	HMA		2	0.3	1.4	2.0
1562+39	RT	MBTO	HMA	10	62.2	7.8	42.0	62.2
1562+72	LT	FE	GRASS	16				
1572+90	RT	CE	HMA	25				
1578+26	RT	PE	AGG	15	27.8	3.5	18.8	27.8
1579+22	RT & LT	FE	GRASS	12				
1580+20	RT	PE	AGG	12	24.4	3.1	16.5	24.4
1580+76	LT	PE	HMA	15	27.8	3.5	18.8	27.8
SUBTOTAL						103	552	817

ENTRANCE SCHEDULE								
STA	SIDE	DESCRIPTION	EXIST MAT	WIDTH	AREA	INC HMA SURF	BIT TACK COAT	HMA SURF REM 2 1/4"
				FOOT	SQ YD	TON	POUND	SQ YD
1580+80	RT	MBTO	HMA	10	62.2	7.8	42.0	62.2
1582+26.5	RT	CE	AGG	20				
1582+65	RT	MBTO	HMA	10	62.2	7.8	42.0	62.2
1584+95	RT	MBTO	HMA	10	62.2	7.8	42.0	62.2
1585+08	RT	PE	AGG	12	24.4	3.1	16.5	24.4
1589+20	LT	FE	AGG	12				
1592+39	RT	FE	AGG	14				
1602+00	LT	FE	AGG	16				
1602+00	RT	PE	HMA	13	25.6	3.2	17.3	25.6
1602+13	RT	MBTO	HMA	10	62.2	7.8	42.0	62.2
1615+25	RT	FE	GRASS	16	9			9.0
SUBTOTAL						38	202	308
TOTAL						268	1435	2133

**NOTE: 0.0 = BOYCE MEMORIAL
2.5 = BUFFALO ROCK RD (EAST 13 TH RD)**

PATCHING SCHEDULE								
RURAL - (BUFFALO ROCK RD TO WEST CITY LIMITS OF OTTAWA)								
LOCATION	EASTBOUND LANE - 12'							
	PATCH LENGTH	CLASS B TYPE II 13"	CLASS B TYPE III 13"	CLASS B TYPE IV 13"	DOWEL BARS 1 1/2"	SAW CUTS	WELDED WIRE REINF 3/4"	TIE BARS 3/4"
LOG MILE	(FT)	SQ YD	SQ YD	SQ YD	EACH	FOOT	SQ YD	EACH
2.40	6	8			20	48		
2.40	6	8			20	48		
2.30	6	8			20	48		
2.20	10	13			20	56		
2.20	6	8			20	48		
2.10	10	13			20	56		
2.00	6	8			20	48		
1.80	6	8			20	48		
1.80	6	8			20	48		
1.70	6	8			20	48		
1.70	6	8			20	48		
1.70	6	8			20	48		
1.70	6	8			20	48		
1.60	6	8			20	48		
1.50	6	8			20	48		
1.40	10	13			20	56		
1.30	6	8			20	48		
1.20	12		16		20	60	16	
1.20	6	8			20	48		
1.10	6	8			20	48		
1.10	8	11			20	52		
1.00	10	13			20	56		
0.90	6	8			20	48		
0.90	6	8			20	48		
0.80	6	8			20	48		
SUBTOTALS	168	207	16		480	1200	16	

PATCHING SCHEDULE								
RURAL - (BUFFALO ROCK RD TO WEST CITY LIMITS OF OTTAWA)								
LOCATION	WESTBOUND LANE - 12'							
	PATCH LENGTH	CLASS B TYPE II 13"	CLASS B TYPE III 13"	CLASS B TYPE IV 13"	DOWEL BARS 1 1/2"	SAW CUTS	WELDED WIRE REINF 3/4"	TIE BARS 3/4"
LOG MILE	(FT)	SQ YD	SQ YD	SQ YD	EACH	FOOT	SQ YD	EACH
1.00	18		24		20	72	24	
1.10	6	8			20	48		
1.20	8	11			20	52		
1.30	6	8			20	48		
1.30	8	11			20	52		
1.40	6	8			20	48		
1.40	15		20		20	66	20	
1.50	6	8			20	48		
1.70	6	8			20	48		
1.70	20			27	20	76	27	10
1.70	6	8			20	48		
1.80	6	8			20	48		
1.90	6	8			20	48		
2.00	10	13			20	56		
2.00	6	8			20	48		
2.10	6	8			20	48		
2.10	6	8			20	48		
2.20	12		16		20	60	16	
2.30	6	8			20	48		
2.30	6	8			20	48		
2.40	8	11			20	52		
2.40	15		20		20	66	20	
2.40	6	8			20	48		
SUBTOTALS	198	158	80	27	460	1224	107	10

PATCHING TOTALS						
TYPE II 13"	CLASS B TYPE III 13"	CLASS B TYPE IV 13"	DOWEL BARS 1 1/2"	SAW CUTS	WELDED WIRE REINF 3/4"	TIE BARS 3/4"
SQ YD	SQ YD	SQ YD	EACH	FOOT	SQ YD	EACH
365	96	27	940	2424	123	10

PAVEMENT MARKING SCHEDULE							
LOCATION	LENGTH	POLYUREA PVMT MRK LINE - 4" WHITE	POLYUREA PVMT MRK LINE - 6"	POLYUREA PVMT MRK LINE - 12"	POLYUREA PVMT MRK LINE - 24"	RAISED REFLECTIVE PVMT MRKR	RAISED REFLECTIVE PVMT MRKR REMOVAL
STA TO STA	FOOT	FOOT	FOOT	FOOT	FOOT	EACH	EACH
US 6							
288+80 TO 418+29.32	12949.32	51,797	6475			162	162
418+29.32 TO 470+57.97	5228.65	20,915	2614			65	65
470+57.97 BK TO 1431+24.18 AH	STA EQUATION						
1431+24.18 TO 1432+72.76	148.58	594	74			2	2
1432+72.76 TO 1615+42.7	18,270	73,080	9135			228	228
IL 178 & US 6 INTERSECTION							
WEST LEG							
282+80 TO 279+80	300	1,200	150	554	50.8	4	4
EAST LEG							
288+80 TO 282+80	600	2,400	300	1000	52.4	8	8
SOUTH LEG							
20+00 TO 23+22	322	1,288	161	600	51.4	4	4
NORTH LEG							
14+30 TO 20+00	570	2,280	285	870	52.6	7	7
TOTAL		153,554	19,194	3024	207	480	480

ADDITIONAL QUANTITY HAS BEEN INCLUDED TO ALLOW FOR TWO SEPARATE APPLICATIONS OF POLYUREA PAVEMENT MARKING

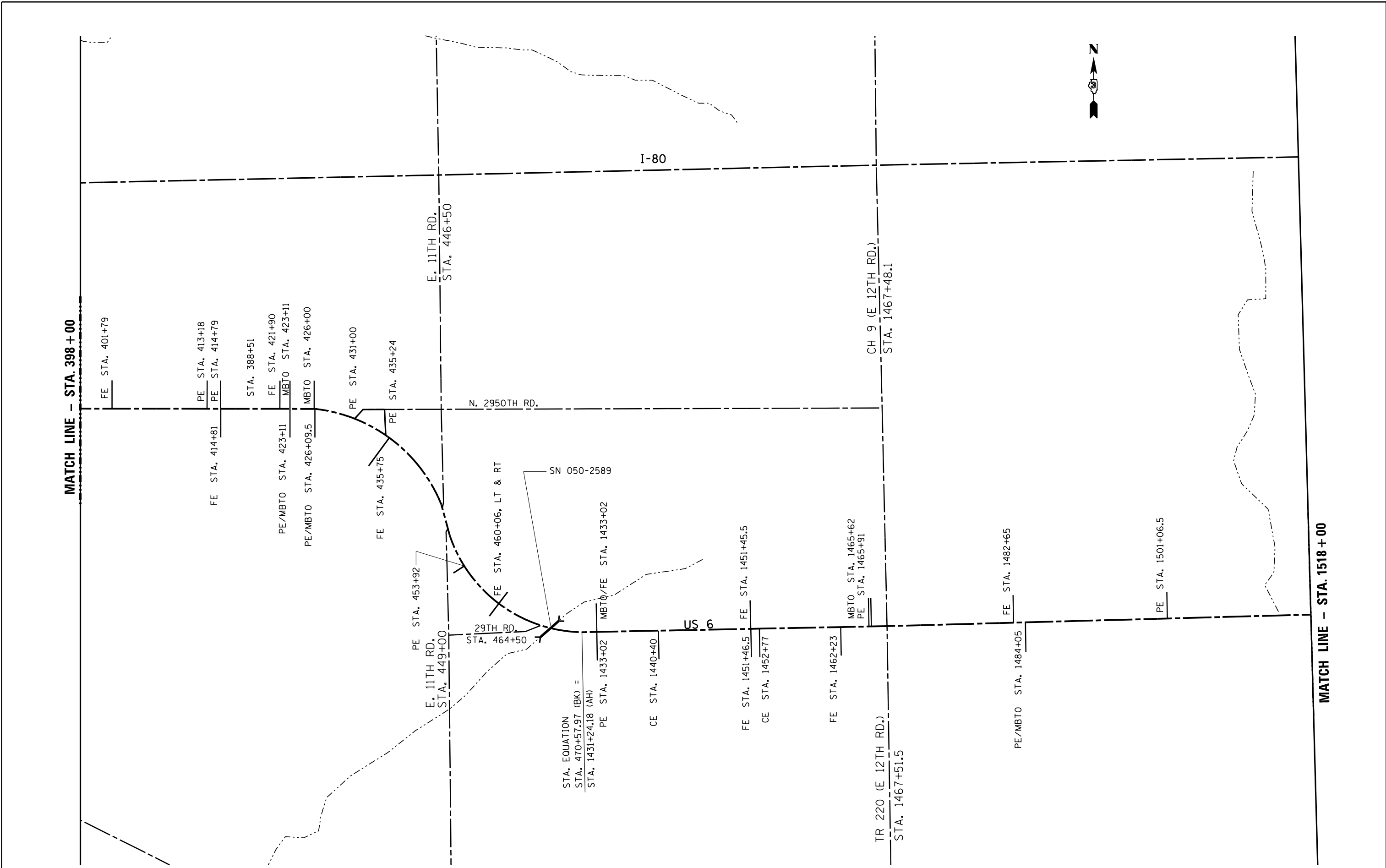
TEMPORARY PAVEMENT MARKING SCHEDULE								
LOCATION	LENGTH	TEMP PVMT MRK LINE - 4" WHITE	TEMP PVMT MRK LINE - 6"	TEMP PAINT PVMT MRK LINE - 12"	TEMP PAINT PVMT MRK LINE - 24"	PVMT MRK REMOVAL WATER BLAST	SHORT TERM PVMT MRK	SHORT TERM PVMT MRK REMOVAL
STA TO STA	FOOT	FOOT	FOOT	FOOT	FOOT	SQ FT	FOOT	SQ FT
US 6								
288+80 TO 418+29.32	12949.32	51,797	6474.7			20503	3885.0	432
418+29.32 TO 470+57.97	5228.65	20,915	2614.3			8279	1569.0	174
470+57.97 BK TO 1431+24.18 AH	STA EQUATION							
1431+24.18 TO 1432+72.76	148.58	594	74.3			235	45.0	5
1432+72.76 TO 1615+42.7	18,270	73,080	9135.0			28927	5481.0	609
IL 178 & US 6 INTERSECTION								
WEST LEG								
282+80 TO 279+80	300	1,200	150.0	554	50.8	1131	90.0	10
EAST LEG								
288+80 TO 282+80	600	2,400	300.0	1000	52.4	2055	180.0	20
SOUTH LEG								
20+00 TO 23+22	322	1,288	161.0	600	51.4	1213	96.0	11
NORTH LEG								
14+30 TO 20+00	570	2,280	285.0	580	52.6	1588	171.0	19
TOTAL		153,554	19,194	2734	207	63931	11517	1280

QUANTITY IS BASED ON TWO APPLICATIONS OF TEMPORARY PAVEMENT MARKING AND 3 APPLICATIONS OF SHORT TERM PAVEMENT MARKING

FILE 6-6					
US ROUTE 6			CONTRACT NO. 66E99		
LOCATION: ILL 178 TO WCL OF OTTAWA			LASALLE COUNTY		
POINT NUMBER	DESCRIPTION	EXISTING MONUMENT TYPE	PROPOSED MONUMENT TYPE	MONUMENT RECORD TO BE RECORDED	RESPONSIBILITY
006300	E QTR COR SEC 5, T33N, R2E, 3RD PM	BRASS DISK	TYPE 1	YES	1
006314	CENTER SEC 4, T33N, R2E, 3RD PM	PK NAIL	PK NAIL	NO	2
006302	W QTR COR SEC 3, T33N, R2E, 3RD PM	BRASS DISK	TYPE 1	YES	1
006315	CENTER SEC 3, T33N, R2E, 3RD PM	PK NAIL	PK NAIL	NO	2
006303	E QTR COR SEC 3, T33N, R2E, 3RD PM	BRASS DISK	TYPE 1	YES	1
006316	CENTER SEC 2, T33N, R2E, 3RD PM	PK NAIL	PK NAIL	NO	2
006306	S QTR COR SEC 1, T33N, R2E, 3RD PM	BRASS DISK	TYPE 1	YES	1
006307	SE COR SEC 1, T33N, R2E, 3RD PM	PIPE	TYPE 1	YES	1
006308	NW COR SEC 7, T33N, R3E, 3RD PM	BRASS DISK	TYPE 1	YES	1
006317	NE COR SEC 7, T33N, R3E, 3RD PM	PK NAIL	TYPE 1	YES	1
006309	S QTR COR SEC 5, T33N, R3E, 3RD PM	BRASS DISK	PK NAIL	NO	2
006310	NW COR SEC 9, T33N, R3E, 3RD PM	BRASS DISK	TYPE 1	YES	1
006311	N QTR COR SEC 9, T33N, R3E, 3RD PM	BRASS DISK	TYPE 1	YES	1
006312	NW COR SEC 10, T33N, R3E, 3RD PM	BRASS DISK	TYPE 1	YES	1
006313	N QTR COR SEC 10, T33N, R3E, 3RD PM	BRASS DISK	TYPE 1	YES	1

LISTED MONUMENT LOCATIONS AND EXISTING TIES HAVE BEEN RECORDED BY GPS. PRE CONSTRUCTION TIES BY THE R.E. ARE NOT REQUIRED. THE R.E. MUST TIE AND BRING TO THE ATTENTION OF THE PLATS AND PLANS MANAGER ANY ADDITIONAL UNLISTED MONUMENTS FOUND. UPON PAVING COMPLETION, THE R.E. WILL DIRECT THE PLATS AND PLANS MANAGER TO STAKE THE LOCATIONS FOR TYPE 1 MONUMENT CORING PLATS AND PLANS WILL PREPARE AND RECORD ALL REQUIRED MONUMENT RECORDS

RESPONSIBILITY:
 1) RESIDENT TO RE-ESTABLISH MONUMENT (PAY ITEM REQUIRED. PERMANENT SURVEY MARKER, TYPE 1)
 2) PLATS AND PLANS TO RE-ESTABLISH MONUMENT

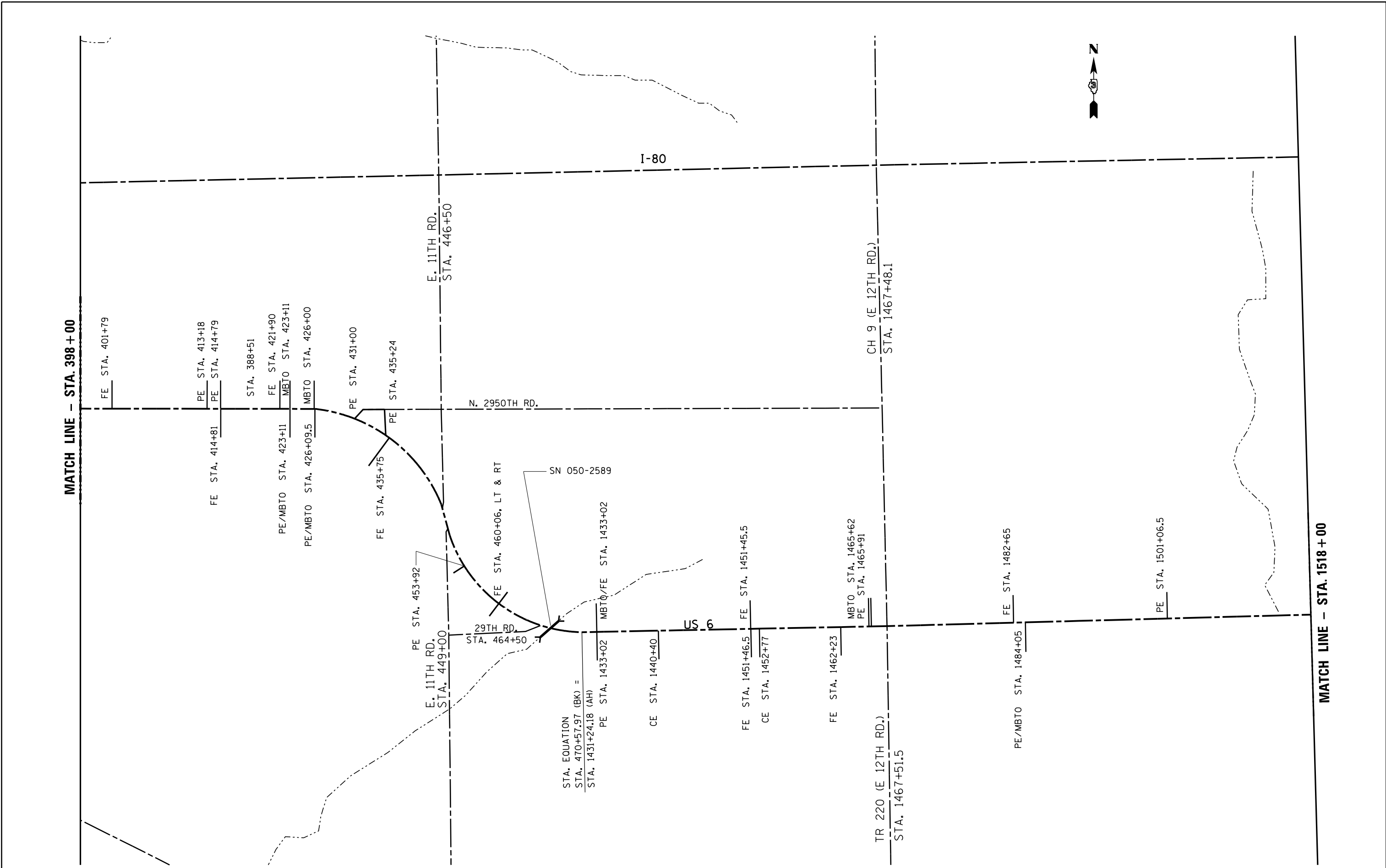


FILE NAME =	USER NAME = carpenterj	DESIGNED -	REVISED -
pw:\IL084EB\INTEG\Illinois.gov\PWIDOT\Documents\DOT Offices\District 3\Projects\0366E99\CADDData\CAD\Drawings\0366E99\0366E99.dgn		CHECKED -	REVISED -
Default	PLOT SCALE = 100,0000' / in.	DATE -	REVISED -
	PLOT DATE = 10/16/2018		

**STATE OF ILLINOIS
DEPARTMENT OF TRANSPORTATION**

PROJECT LAYOUT			
SCALE:	SHEET 2 OF 3 SHEETS	STA.	TO STA.

F.A.P. RTE.	SECTION	COUNTY	TOTAL SHEETS	SHEET NO.
623	(30,31)RS-4	LASALLE	25	15
CONTRACT NO. 66E99				
ILLINOIS FED. AID PROJECT				



FILE NAME =	USER NAME = carpenterj	DESIGNED -	REVISED -
pw:\IL084EB\INTEG\Illinois.gov\PWIDOT\Documents\DOT Offices\District 3\Projects\0366E99\CADDData\CAD\Drawings\Drawings and details\6.DGN		DRAWN -	REVISED -
Default	PLOT SCALE = 100,0000' / in.	CHECKED -	REVISED -
	PLOT DATE = 10/16/2018	DATE -	REVISED -

**STATE OF ILLINOIS
DEPARTMENT OF TRANSPORTATION**

SCALE:		SHEET 2 OF 3 SHEETS		STA.	TO STA.
		PROJECT LAYOUT			

F.A.P. RTE.	SECTION	COUNTY	TOTAL SHEETS	SHEET NO.
623	(30,31)RS-4	LASALLE	25	15
CONTRACT NO. 66E99				
ILLINOIS FED. AID PROJECT				

MATCH LINE - STA. 1518+00

E 13TH RD.
STA. 1523+18.4

E 13TH RD.
STA. 1523+22.1

FE STA. 1536+35

PE STA. 1541+22
MBTO STA. 1541+55

NO MTD WILL BE ALLOWED
OVER SN 050-2590

SN 050-2590

PE STA. 1549+65
PE STA. 1550+00

FE STA. 1549+76
PE STA. 1551+20
FE STA. 1553+14

PE STA. 1561+74
MBTO STA. 1562+39

1380TH RD
STA. 1565+79.8

OAK BLUFF CT.
STA. 1565+42

CE STA. 1572+90

I-80

TIMBER CREEK LANE
STA. 1572+45

E 14TH RD.
STA. 1575+85.8

SEE DETAIL A

FE STA. 1589+20

US 6

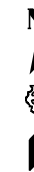
PE STA. 1602+00
MBTO STA. 1602+13

FE STA. 1615+25

END OF PROJECT
CURB AND GUTTER BEGINS
STA. 1615+42.7

DETAIL A

PE STA. 1578+26
FE STA. 1579+22
PE STA. 1580+20
MBTO STA. 1580+80
PE STA. 1580+76
CE STA. 1582+26.5
MBTO STA. 1582+65
MBTO STA. 1584+95
PE STA. 1585+08



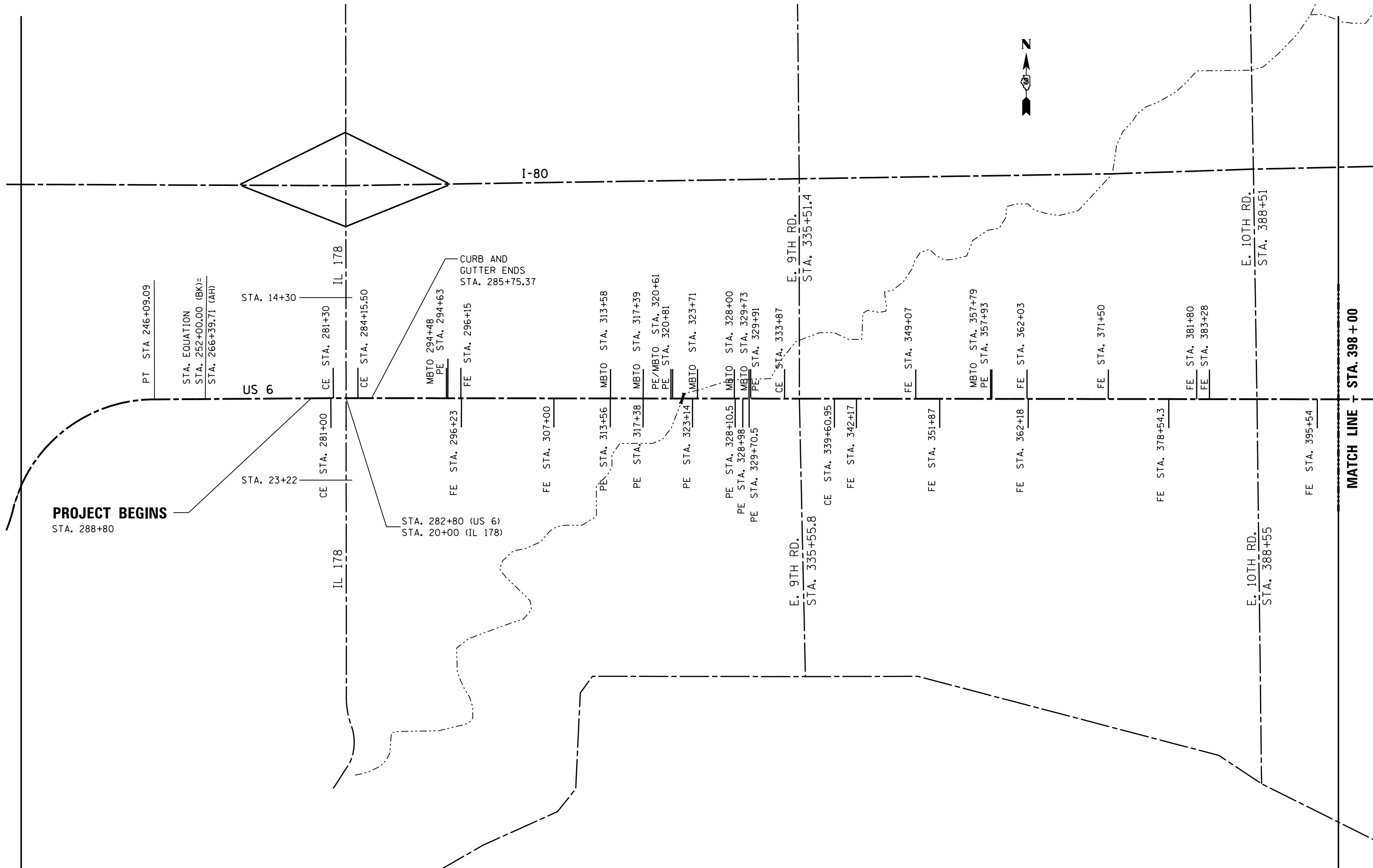
FILE NAME =	USER NAME = carpenterj	DESIGNED -	REVISED -
pw:\IL084EB\INTEG\Illinois.gov\PWIDOT\Documents\DOT Offices\District 3\Projects\0366E99\CADData\CADsheets\0366E99\Drawings\0366E99\0366E99.dgn		CHECKED -	REVISED -
Default	PLOT DATE = 10/16/2018	DATE -	REVISED -

STATE OF ILLINOIS
DEPARTMENT OF TRANSPORTATION

PROJECT LAYOUT

SCALE: SHEET 3 OF 3 SHEETS STA. TO STA.

F.A.P. RTE.	SECTION	COUNTY	TOTAL SHEETS	SHEET NO.
623	(30,31)RS-4	LASALLE	25	16
CONTRACT NO. 66E99				
ILLINOIS FED. AID PROJECT				





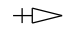



FILE NAME =	USER NAME = carpenterj	DESIGNED -	REVISED -
pw:\IL084EB\INTEG\Illinois.gov\PWIDOT\Documents\DOT Offices\District 3\Projects\0366E99\CADData\CADsheets\0366E99\Drawings\0366E99\0366E99.dgn		DRAWN -	REVISED -
Default		CHECKED -	REVISED -
		DATE -	REVISED -

**STATE OF ILLINOIS
DEPARTMENT OF TRANSPORTATION**

PROJECT LAYOUT			
SCALE:	SHEET 1 OF 3 SHEETS	STA.	TO STA.

F.A.P. RTE.	SECTION	COUNTY	TOTAL SHEETS	SHEET NO.
623	(30,31)RS-4	LASALLE	25	14
CONTRACT NO. 66E99				
ILLINOIS FED. AID PROJECT				

TRAFFIC SIGNALS LEGEND

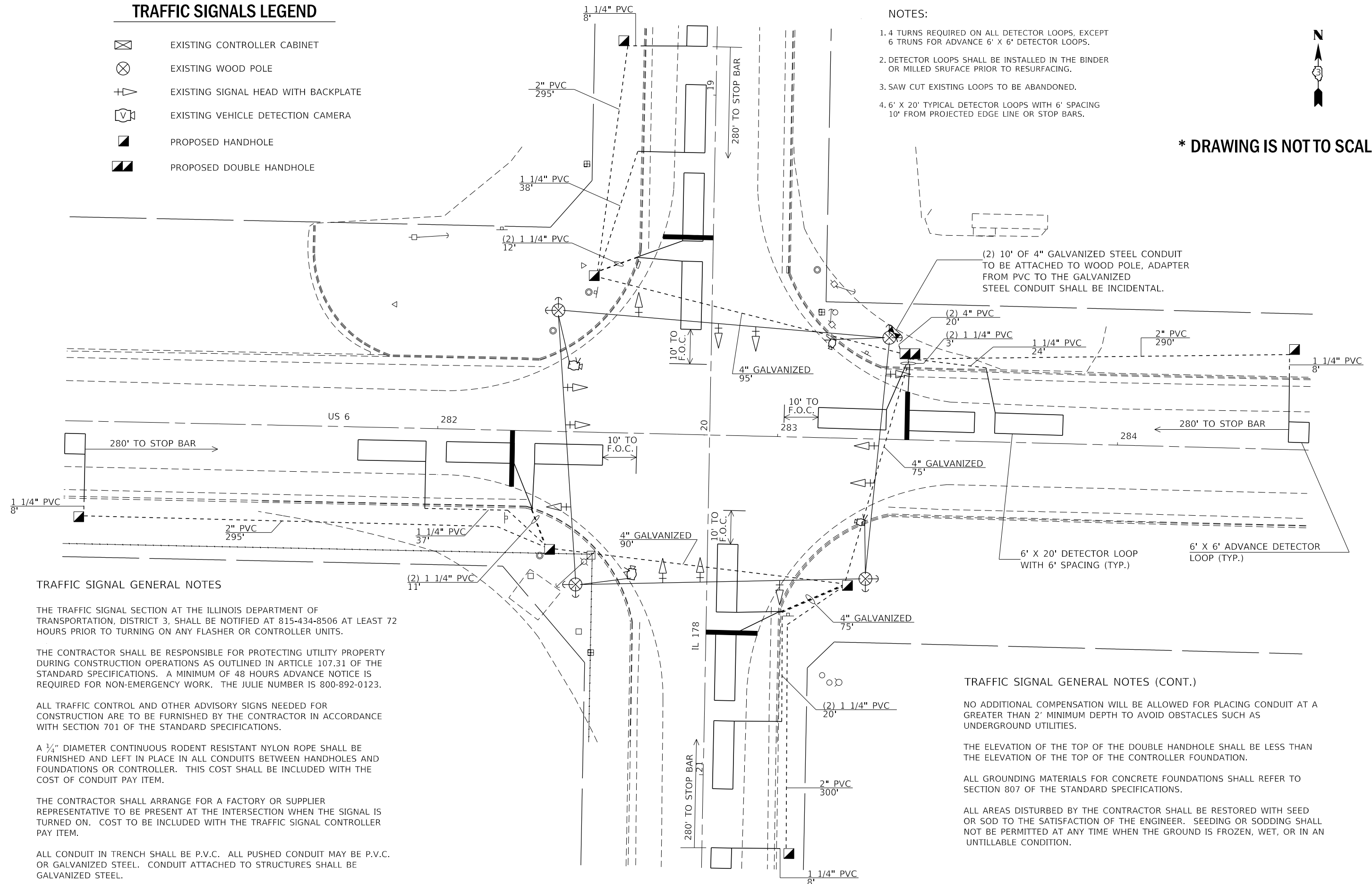
-  EXISTING CONTROLLER CABINET
-  EXISTING WOOD POLE
-  EXISTING SIGNAL HEAD WITH BACKPLATE
-  EXISTING VEHICLE DETECTION CAMERA
-  PROPOSED HANDHOLE
-  PROPOSED DOUBLE HANDHOLE

NOTES:

1. 4 TURNS REQUIRED ON ALL DETECTOR LOOPS, EXCEPT 6 TRUNS FOR ADVANCE 6' X 6' DETECTOR LOOPS.
2. DETECTOR LOOPS SHALL BE INSTALLED IN THE BINDER OR MILLED SURFACE PRIOR TO RESURFACING.
3. SAW CUT EXISTING LOOPS TO BE ABANDONED.
4. 6' X 20' TYPICAL DETECTOR LOOPS WITH 6' SPACING 10' FROM PROJECTED EDGE LINE OR STOP BARS.



*** DRAWING IS NOT TO SCALE**



TRAFFIC SIGNAL GENERAL NOTES

THE TRAFFIC SIGNAL SECTION AT THE ILLINOIS DEPARTMENT OF TRANSPORTATION, DISTRICT 3, SHALL BE NOTIFIED AT 815-434-8506 AT LEAST 72 HOURS PRIOR TO TURNING ON ANY FLASHER OR CONTROLLER UNITS.

THE CONTRACTOR SHALL BE RESPONSIBLE FOR PROTECTING UTILITY PROPERTY DURING CONSTRUCTION OPERATIONS AS OUTLINED IN ARTICLE 107.31 OF THE STANDARD SPECIFICATIONS. A MINIMUM OF 48 HOURS ADVANCE NOTICE IS REQUIRED FOR NON-EMERGENCY WORK. THE JULIE NUMBER IS 800-892-0123.

ALL TRAFFIC CONTROL AND OTHER ADVISORY SIGNS NEEDED FOR CONSTRUCTION ARE TO BE FURNISHED BY THE CONTRACTOR IN ACCORDANCE WITH SECTION 701 OF THE STANDARD SPECIFICATIONS.

A 3/4" DIAMETER CONTINUOUS RODENT RESISTANT NYLON ROPE SHALL BE FURNISHED AND LEFT IN PLACE IN ALL CONDUITS BETWEEN HANDHOLES AND FOUNDATIONS OR CONTROLLER. THIS COST SHALL BE INCLUDED WITH THE COST OF CONDUIT PAY ITEM.

THE CONTRACTOR SHALL ARRANGE FOR A FACTORY OR SUPPLIER REPRESENTATIVE TO BE PRESENT AT THE INTERSECTION WHEN THE SIGNAL IS TURNED ON. COST TO BE INCLUDED WITH THE TRAFFIC SIGNAL CONTROLLER PAY ITEM.

ALL CONDUIT IN TRENCH SHALL BE P.V.C. ALL PUSHED CONDUIT MAY BE P.V.C. OR GALVANIZED STEEL. CONDUIT ATTACHED TO STRUCTURES SHALL BE GALVANIZED STEEL.

TRAFFIC SIGNAL GENERAL NOTES (CONT.)

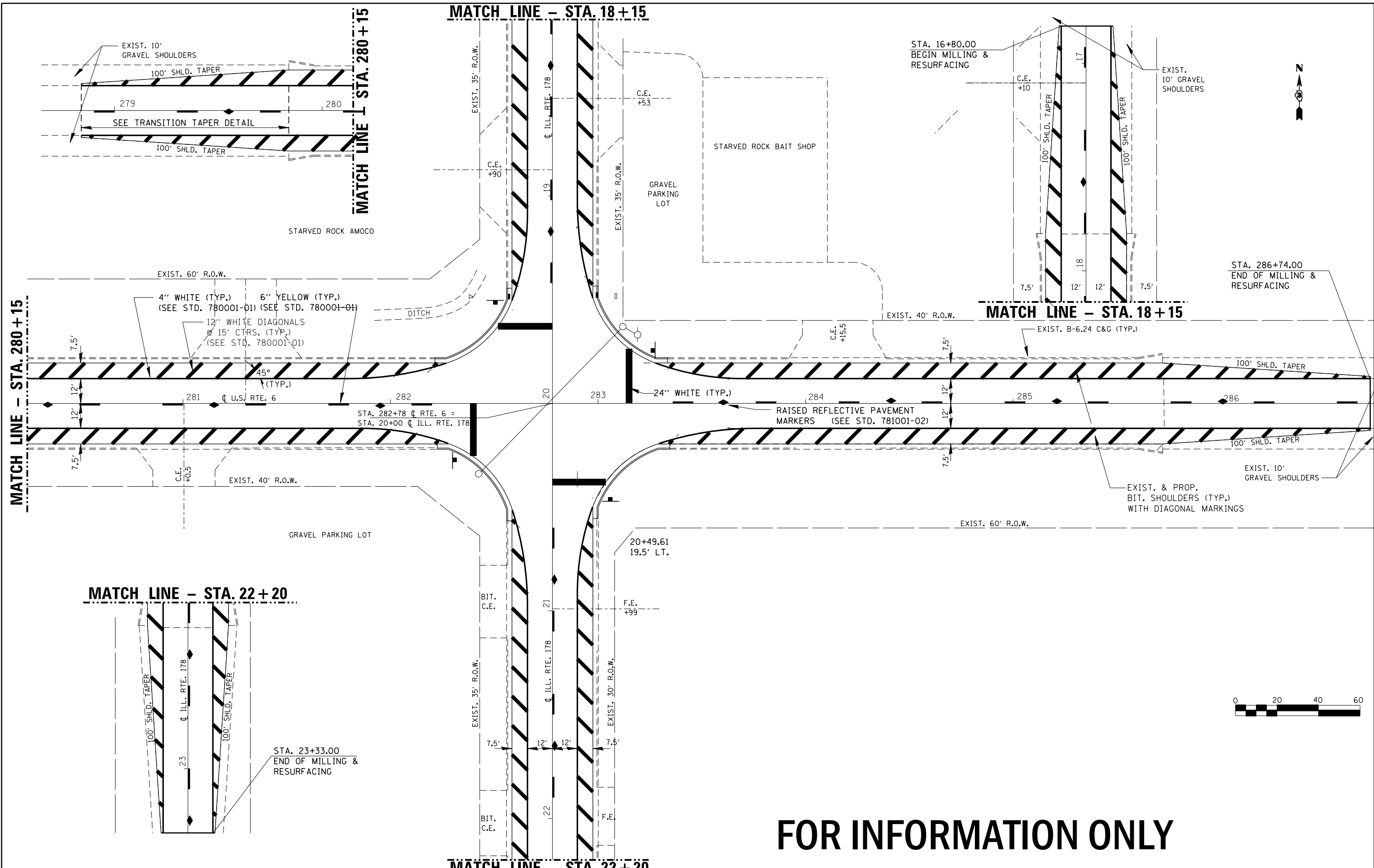
NO ADDITIONAL COMPENSATION WILL BE ALLOWED FOR PLACING CONDUIT AT A GREATER THAN 2' MINIMUM DEPTH TO AVOID OBSTACLES SUCH AS UNDERGROUND UTILITIES.

THE ELEVATION OF THE TOP OF THE DOUBLE HANDHOLE SHALL BE LESS THAN THE ELEVATION OF THE TOP OF THE CONTROLLER FOUNDATION.

ALL GROUNDING MATERIALS FOR CONCRETE FOUNDATIONS SHALL REFER TO SECTION 807 OF THE STANDARD SPECIFICATIONS.

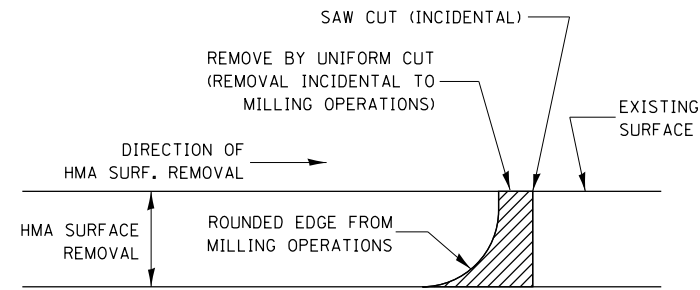
ALL AREAS DISTURBED BY THE CONTRACTOR SHALL BE RESTORED WITH SEED OR SOD TO THE SATISFACTION OF THE ENGINEER. SEEDING OR SODDING SHALL NOT BE PERMITTED AT ANY TIME WHEN THE GROUND IS FROZEN, WET, OR IN AN UNTILLABLE CONDITION.

FILE NAME =	USER NAME = carpenterj	DESIGNED -	REVISED -	STATE OF ILLINOIS DEPARTMENT OF TRANSPORTATION	DETECTOR LOOP INSTALLATION PLANS	F.A.P. RTE.	SECTION	COUNTY	TOTAL SHEETS	SHEET NO.	
pw\IL084EB\INTEG\Illinois.gov\PWIDOT\Documents\DOT Offices\District 3\Projects\0366E99\CADData\CADsheets\0366E99\Drawings\0366E99\0366E99-01.dgn		CHECKED -	REVISED -			623	(30,31)RS-4	LASALLE	25	17	
PLOT SCALE = 100,0000' / in.		DATE -	REVISED -			CONTRACT NO. 66E99					
Default						SCALE:	SHEET 1 OF 2 SHEETS	STA.	TO STA.		ILLINOIS FED. AID PROJECT



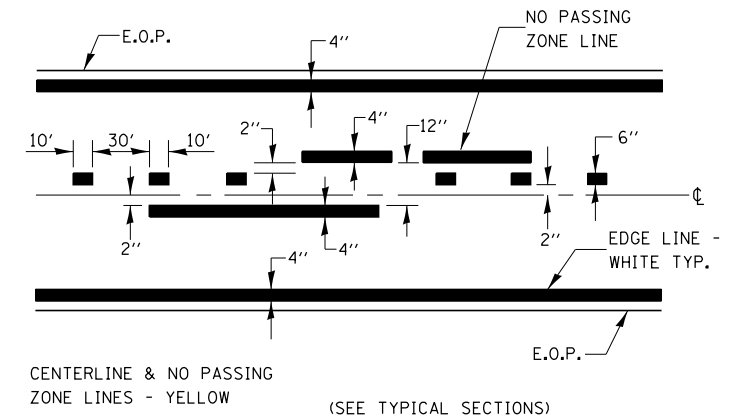
FOR INFORMATION ONLY

FILE NAME =	USER NAME = carpenterj	DESIGNED -	REVISED -	STATE OF ILLINOIS DEPARTMENT OF TRANSPORTATION	PAVEMENT MARKING DETAILS US 6 & IL 178	F.A.P. RTE.	SECTION	COUNTY	TOTAL SHEETS	SHEET NO.	
pw:\IL04EB\INTEG\Illinois.gov\PWIDOT\Documents\DOT Offices\District 3\Projects\D366E99\CADData\CADsheets\0366E99\Drawings\Details and details.DGN		CHECKED -	REVISED -			623	(30,31)RS-4	LASALLE	25	19	
PLOT SCALE = 41,9900' / 1"		DATE -	REVISED -			CONTRACT NO. 66E99					
PLOT DATE = 10/16/2018						ILLINOIS FED. AID PROJECT					

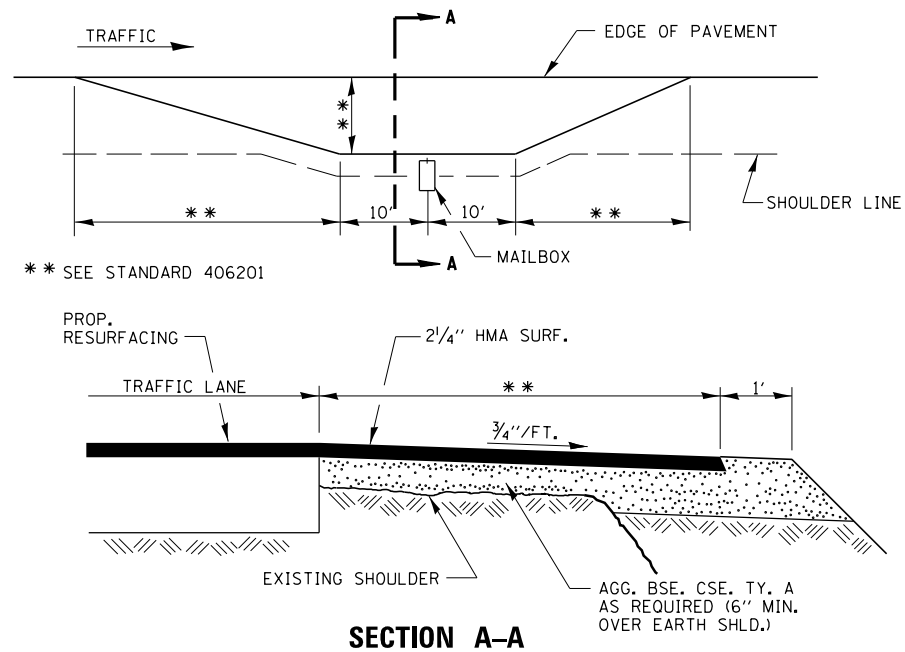


NOTE:
 WHEN MILLING OPERATIONS PRODUCE A ROUNDED EDGE,
 THEN A SAW CUT SHALL BE USED TO MANUFACTURE
 A PERPENDICULAR EDGE AS SHOWN IN THE DETAIL.
 THE ENGINEER SHALL BE THE SOLE JUDGE
 CONCERNING THE USE OF THIS DETAIL

HMA DETAIL AT BUTT JOINTS

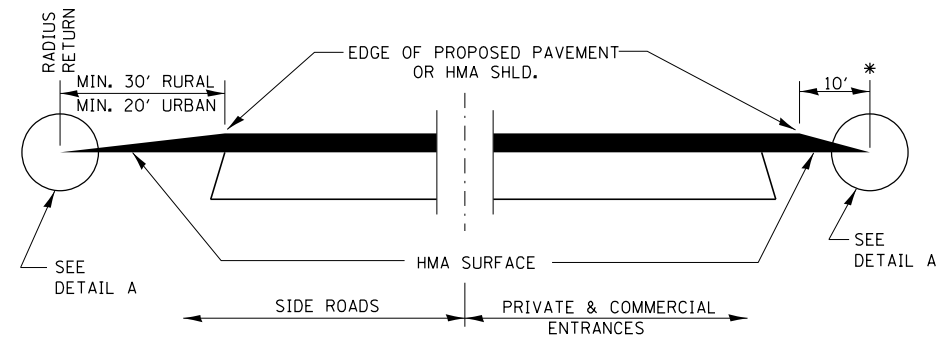


PAVEMENT MARKING

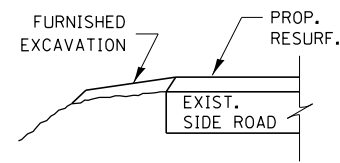


RURAL MAILBOX TURNOUT DETAILS

FILE NAME =	USER NAME = carpenterdj	DESIGNED -	REVISED -	STATE OF ILLINOIS DEPARTMENT OF TRANSPORTATION	DETAILS	F.A.P. RTE.	SECTION	COUNTY	TOTAL SHEETS	SHEET NO.
pw:\IL\084EBIDINTEG.illinois.gov\PWIDOT\Documents\DOT Offices\District 3\Projects\0366\Drawings\EA0\Sheets\0366E99-shr-typic\0366E99-shr-typic.dgn	DESIGNED BY =	CHECKED -	REVISED -			623	(30,31)RS-4	LASALLE	25	20
PLOT SCALE = 100.0000' / in.	CHECKED BY =	DATE -	REVISED -			CONTRACT NO. 66E99			ILLINOIS FED. AID PROJECT	
PLOT DATE = 10/16/2018	DATE -	REVISED -	SCALE: _____			SHEET NO. 1 OF 4 SHEETS	STA. _____ TO STA. _____			

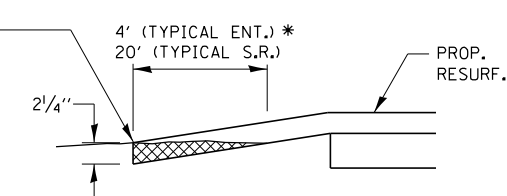


SECTION A-A
DETAILS AT ENTRANCES & SIDE ROADS

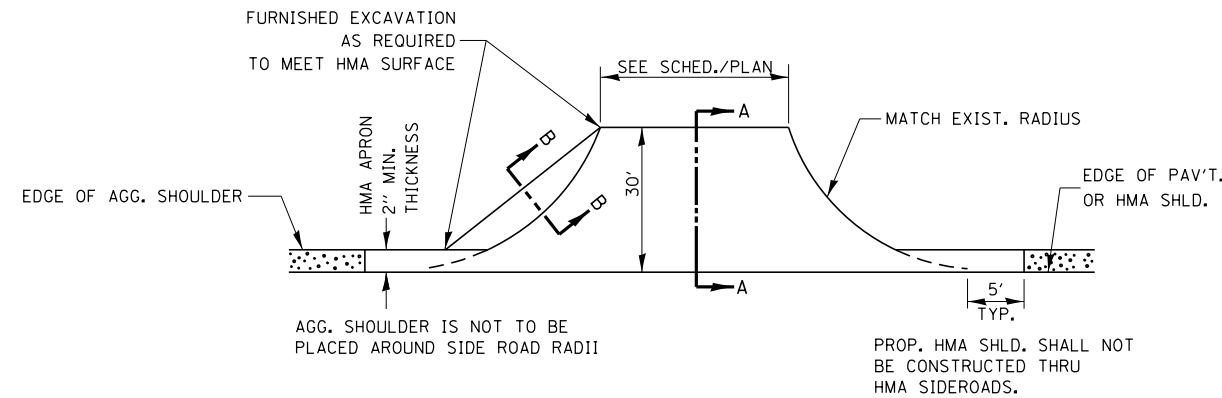


SECTION B-B

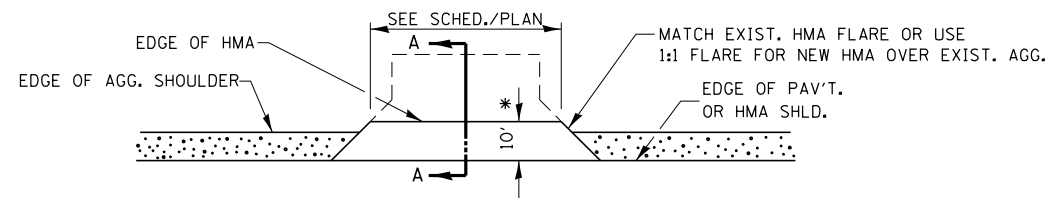
THE COST OF REMOVAL AT EXISTING HMA OR P.C.C. LOCATIONS SHALL BE PAID FOR PER SQ. YD. BY THE APPROPRIATE PAY ITEM. REMOVAL AT THE EXISTING AGG. LOCATIONS SHALL BE INCIDENTAL TO THE HMA. A-3 LOCATIONS SHALL BE FEATHER TAPERED.



DETAIL A



PLAN AT SIDE ROADS



PLAN AT PRIVATE & COMMERCIAL ENTRANCES

(DO NOT RESURFACE FIELD ENTRANCES)

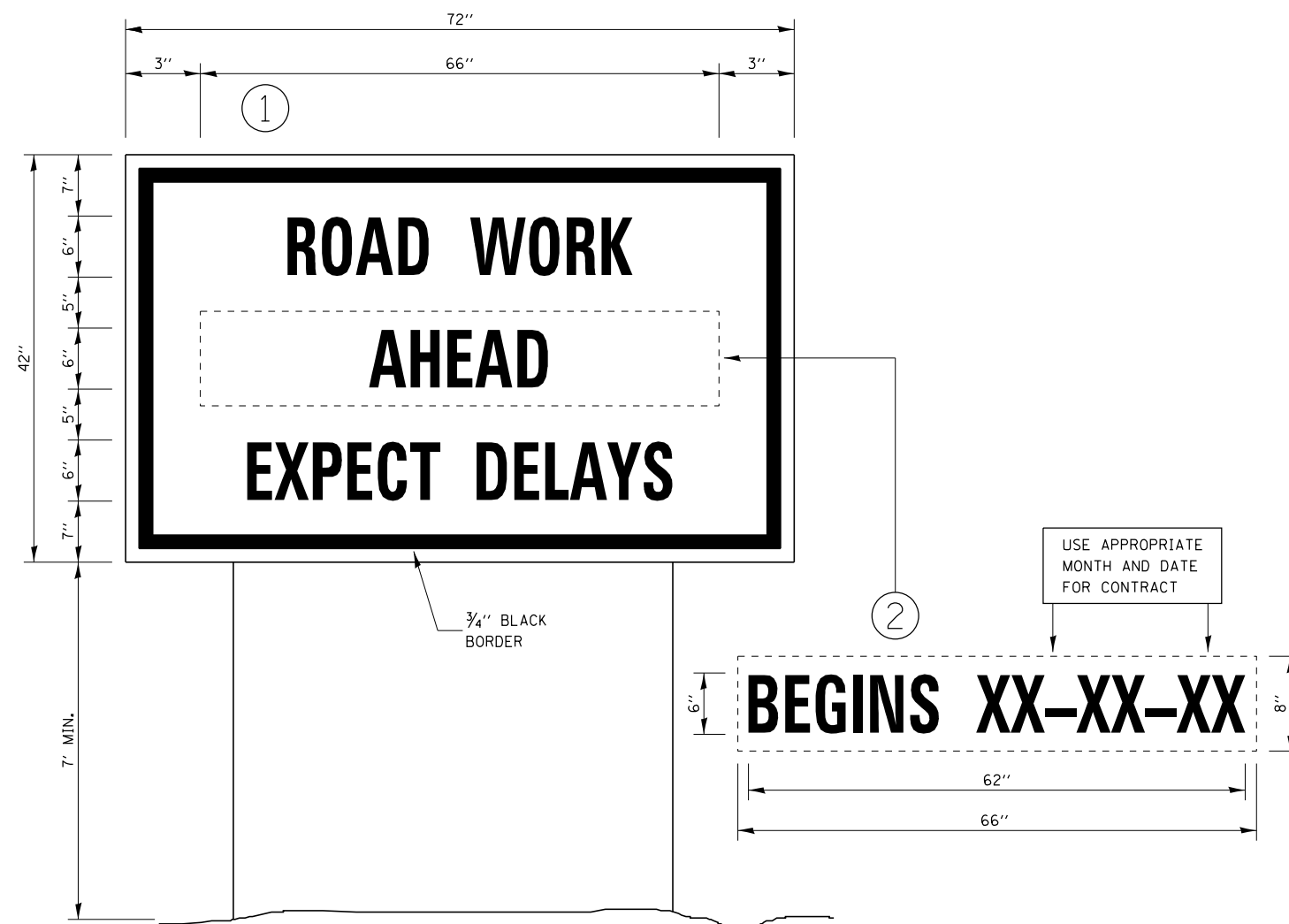
FILE NAME =	USER NAME = carpenterdj	DESIGNED -	REVISED -
p:\11\084EBIDINTEG.illinois.gov\PIWIDOT\Documents\DOT Offices\District 3\Projects\0366EDRAWING\DATA\EA0\Sheets\0366E99-sht-typical\0366E99-01.dgn		DRAWN -	REVISED -
	PLOT SCALE = 100.0000' / in.	CHECKED -	REVISED -
	PLOT DATE = 10/16/2018	DATE -	REVISED -

STATE OF ILLINOIS
DEPARTMENT OF TRANSPORTATION

DETAILS

SCALE: SHEET NO. 2 OF 4 SHEETS STA. TO STA.

F.A.P. RTE.	SECTION	COUNTY	TOTAL SHEETS	SHEET NO.
623	(30,31)RS-4	LASALLE	25	21
CONTRACT NO. 66E99				
ILLINOIS FED. AID PROJECT				



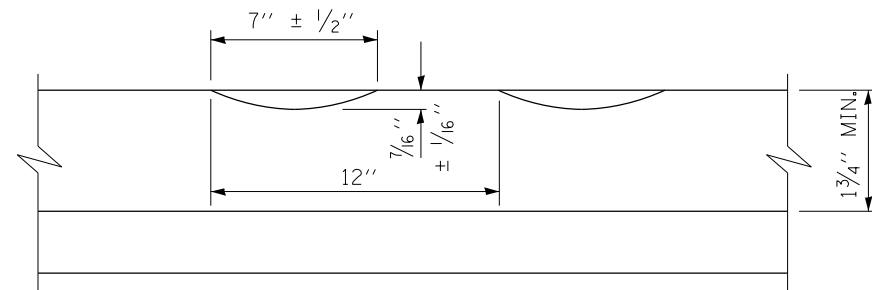
TEMPORARY INFORMATION SIGNING

NOTES:

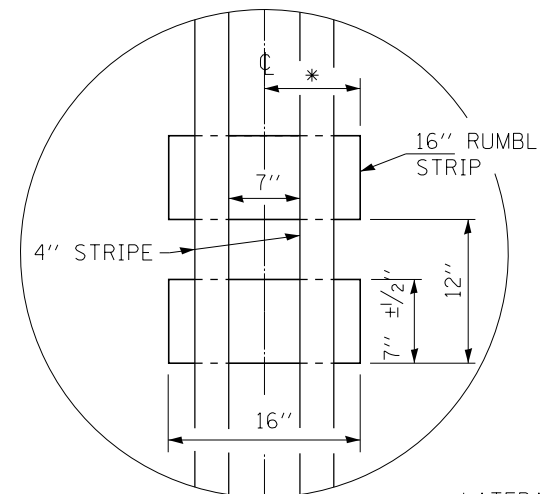
1. USE 6" D BLACK LETTERING ON FLOURESENT ORANGE BACKGROUND.
2. ERECT SIGNS AT LOCATIONS IN ADVANCE OF THE "ROAD CONSTRUCTION AHEAD" SIGNS AS DIRECTED BY THE ENGINEER.
3. ERECT SIGN ① WITH INSTALLED PANEL ② A MINIMUM OF ONE WEEK PRIOR TO THE START OF THE LANE CLOSURE.
4. REMOVE PANEL ② ON THAT DATE.
5. SEE SPECIAL PROVISION "TEMPORARY INFORMATION SIGNING" FOR ADDITIONAL INFORMATION.
6. WILL BE PAID FOR PER SQ FT AS "TEMPORARY INFORMATION SIGNING". EACH SIGN = 21 SQ FT AND THE DATE PANEL ② WILL NOT BE MEASURED SEPARATELY FOR PAYMENT.

FILE NAME =	USER NAME = carpenterdj	DESIGNED - _____	REVISED - _____	STATE OF ILLINOIS DEPARTMENT OF TRANSPORTATION	DETAILS	F.A.P. RTE.	SECTION	COUNTY	TOTAL SHEETS	SHEET NO.	
pw:\11\084EBIDINTEG.illinois.gov\PWIDOT\Documents\IDOT Offices\District 3\Projects\0366\DRAWING\DATA\EA0\Sheets\0366E99-sht-typod\REVISED.dgn						623	(30,31)RS-4	LASALLE	25	22	
PLOT SCALE = 100.0000' / in.						CONTRACT NO. 66E99					
PLOT DATE = 10/16/2018				DATE - _____				ILLINOIS FED. AID PROJECT			

SCALE: _____ SHEET NO. 3 OF 4 SHEETS STA. _____ TO STA. _____

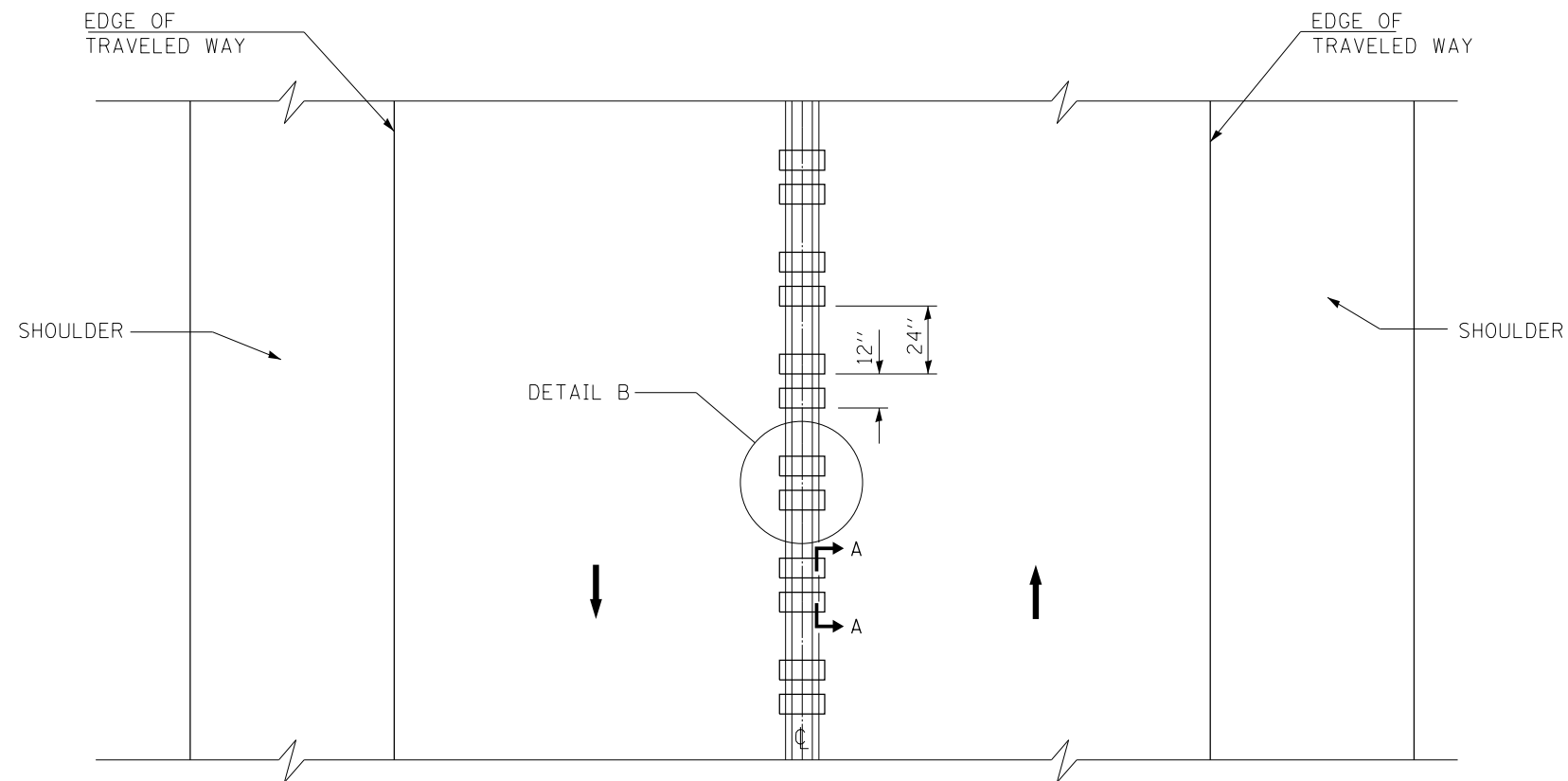


SECTION A-A



DETAIL B

* LATERAL DEVIATION SHALL NOT EXCEED ONE INCH IN 100 FEET.



TWO-WAY ROAD

GENERAL NOTES

SEE STANDARD 780001 FOR STRIPING.

RUMBLE STRIPS SHALL NOT BE PLACED ON BRIDGES.

ALL RUMBLE STRIPS SHALL BE MILLED.

CENTERLINE RUMBLE STRIPS SHALL BE CONTINUOUS THROUGH CONNECTIONS OF SIDEROADS WITH NO LEFT TURN LANES.

DISCONTINUE CENTERLINE RUMBLE STRIPS THROUGH THE LIMITS OF ALL LEFT TURN LANES, INCLUDING ANY LANE TAPER SECTIONS.

WHERE USED, ADJUST SPACING OF RAISED REFLECTIVE PAVEMENT MARKERS TO FALL IN WIDER GAP BETWEEN RUMBLE STRIPS.

CENTERLINE RUMBLE STRIPS SHALL BE PLACED IN NO PASSING ZONES ONLY.

RUMBLE STRIPS
CENTERLINE
NON-FREEWAY

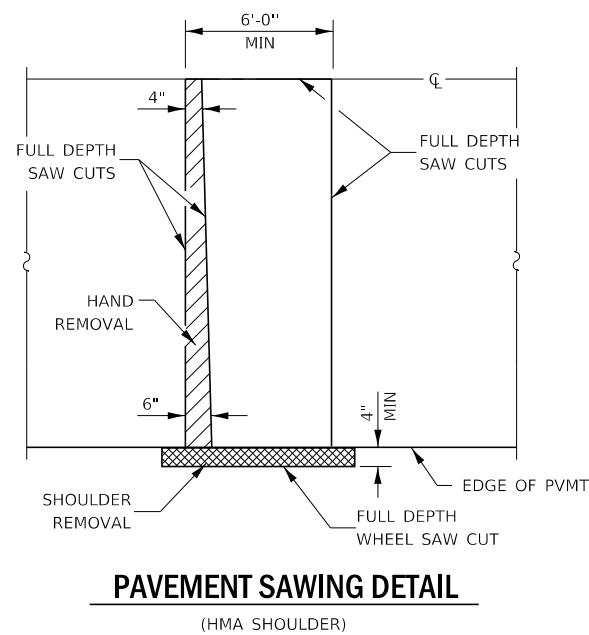
FILE NAME =	USER NAME = carpenterdj	DESIGNED -	REVISED -
pw:\IL\084EBIDINTEG.illinois.gov\PI\DOT\Documents\DOT Offices\District 3\Projects\036699\Drawings\036699-shr-typical-rumble-strips.dgn			
PLOT SCALE = 100.0000' / in.	CHECKED -	REVISED -	
PLOT DATE = 10/16/2018	DATE -	REVISED -	

STATE OF ILLINOIS
DEPARTMENT OF TRANSPORTATION

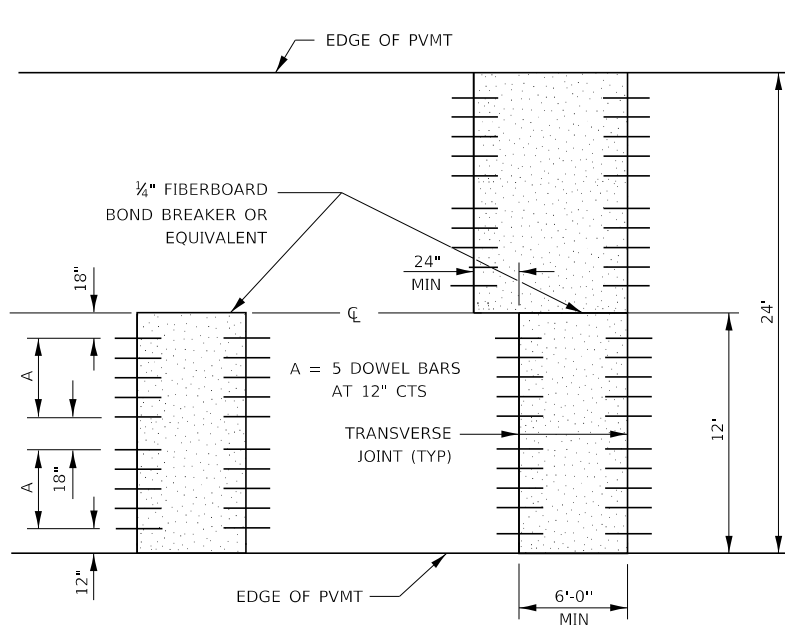
DETAILS

SCALE: _____ SHEET NO. 4 OF 4 SHEETS STA. _____ TO STA. _____

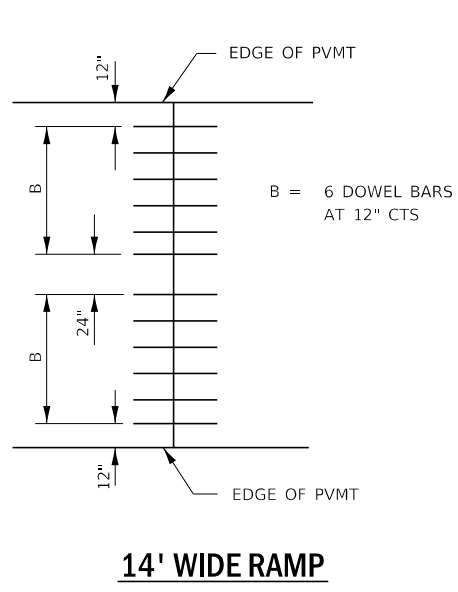
F.A.P. RTE.	SECTION	COUNTY	TOTAL SHEETS	SHEET NO.
623	(30,31)RS-4	LASALLE	25	23
CONTRACT NO. 66E99				
ILLINOIS FED. AID PROJECT				



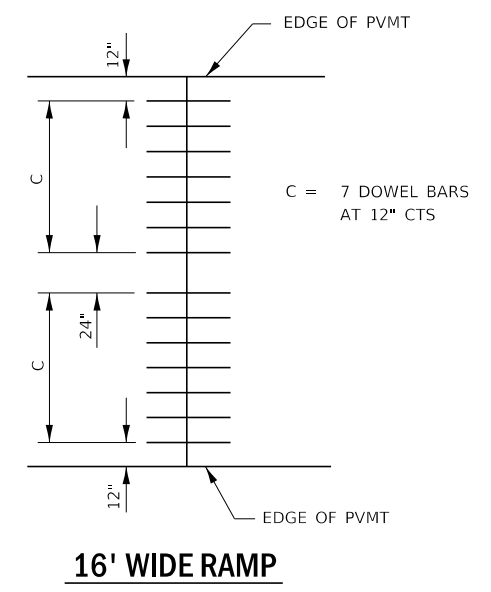
PAVEMENT SAWING DETAIL
(HMA SHOULDER)



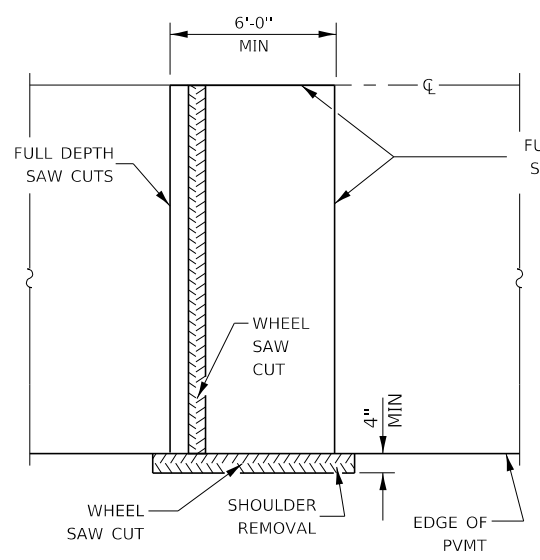
12' WIDE LANES



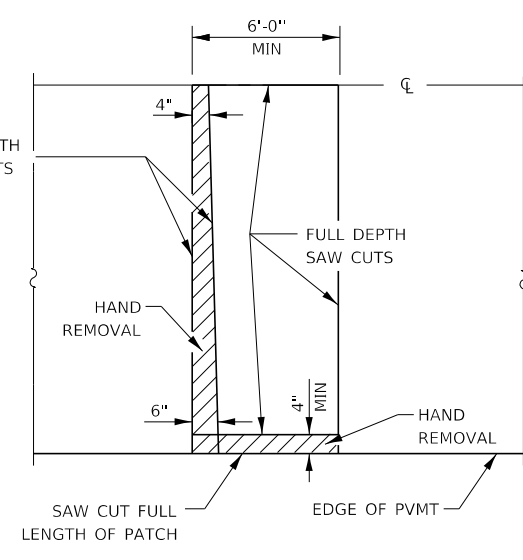
14' WIDE RAMP



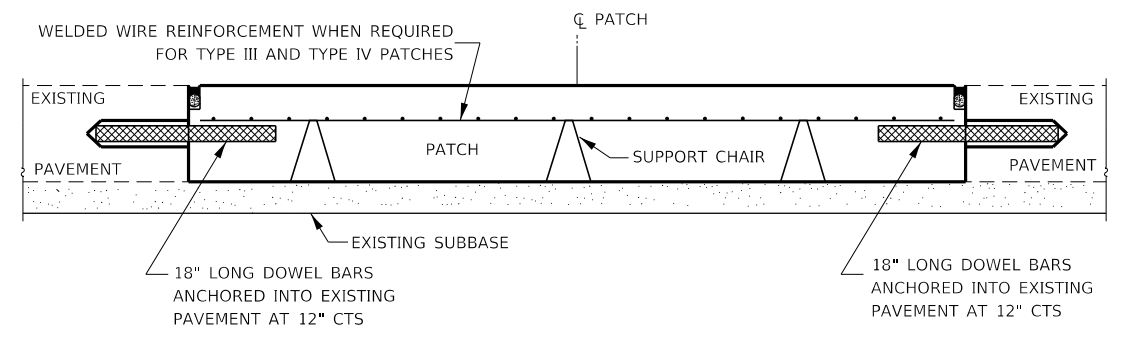
16' WIDE RAMP



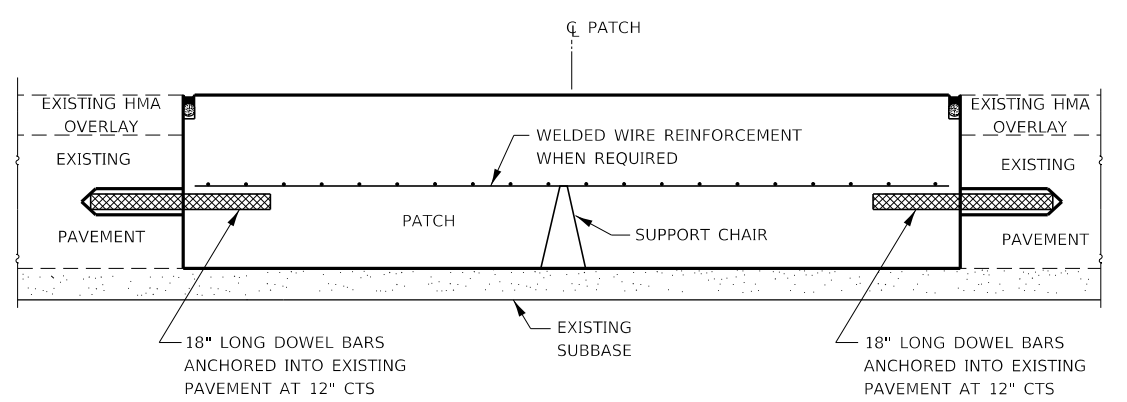
ALTERNATE SAWING DETAIL
(HMA SHOULDER)



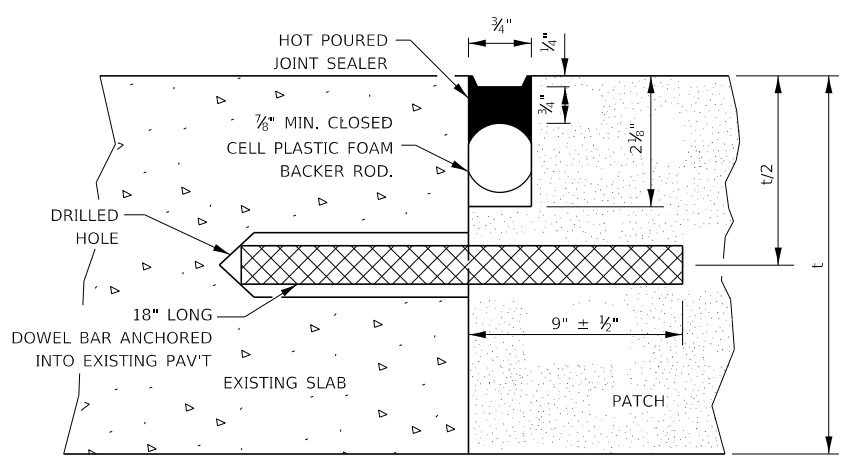
PAVEMENT SAWING DETAIL
(PCC SHOULDER)



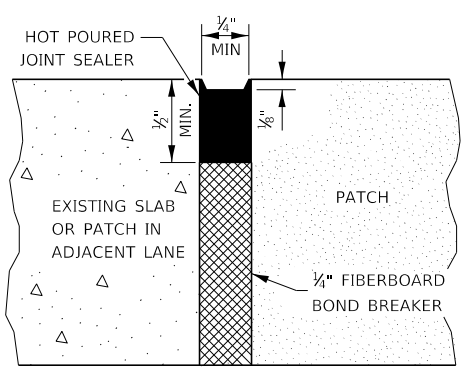
PATCHING WITHOUT HMA OVERLAY



PATCHING WITH HMA OVERLAY



TRANSVERSE JOINT

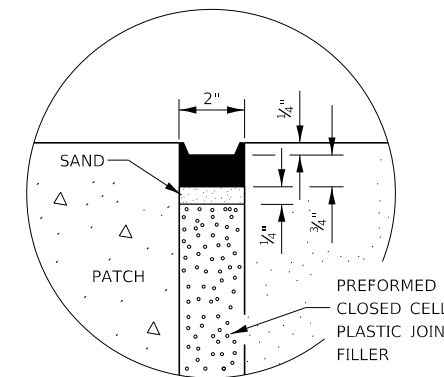
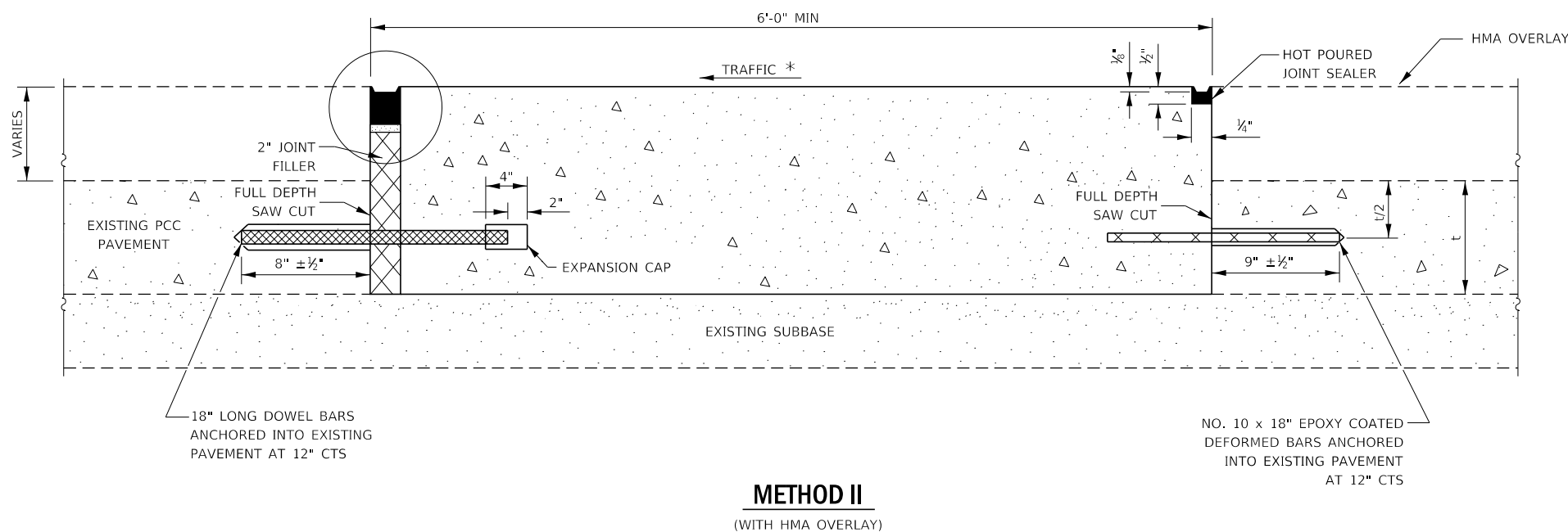
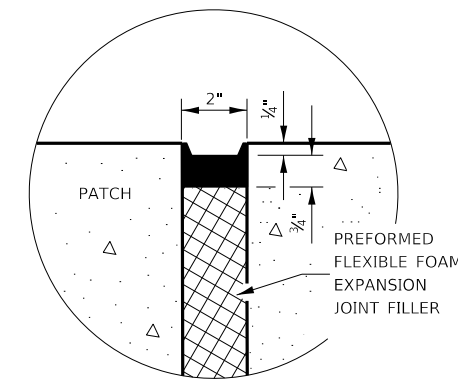
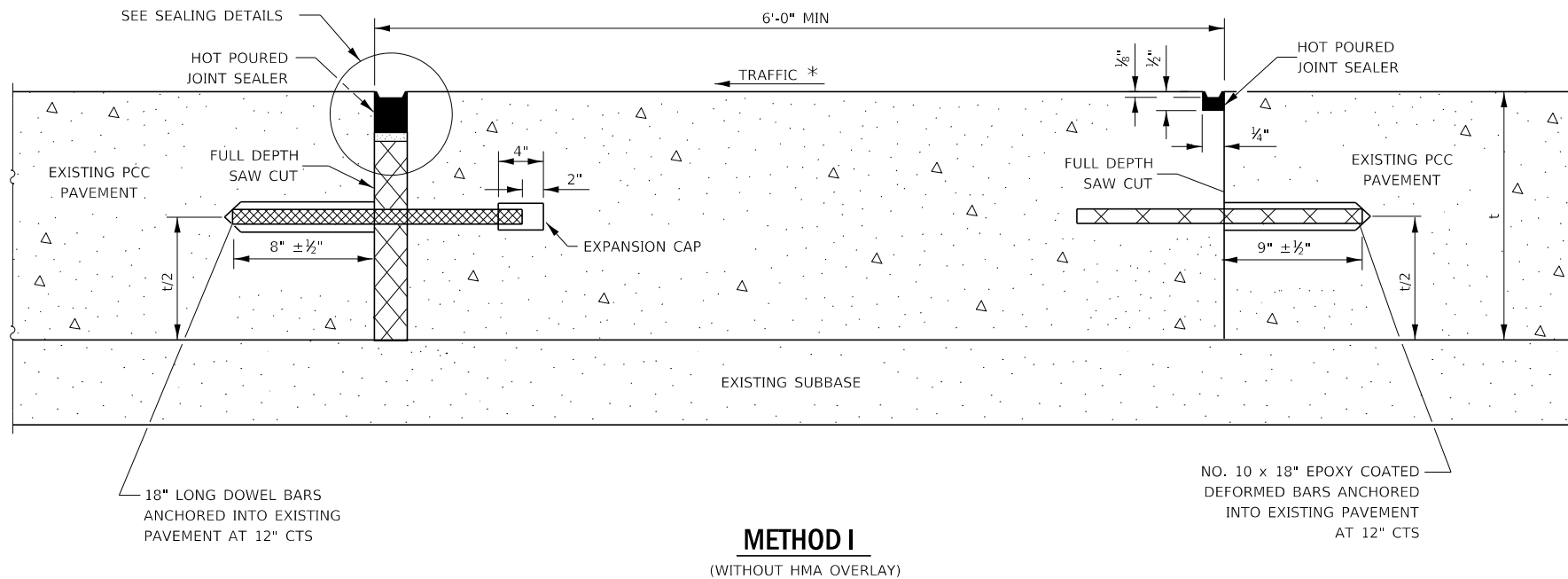


CENTERLINE JOINT

DOWEL BAR TABLE		
PAVEMENT THICKNESS	DOWEL BAR DIAMETER	HOLE DIAMETER
8" OR GREATER	1 1/2"	1 3/8"
7" THRU 7.99"	1 1/4"	1 3/16"
LESS THAN 7"	1"	1 3/16"

GENERAL NOTES

THE TRANSVERSE JOINTS FOR CLASS B PATCHES SHALL ALIGN WITH JOINTS OR CRACKS IN THE ADJACENT LANE WHENEVER POSSIBLE.
SEE STANDARD 420701 FOR DETAILS OF PAVEMENT WELDED WIRE REINFORCEMENT.



NOTE

* WHEN RE-ESTABLISHING A TRANSVERSE EXPANSION JOINT ON A TWO-WAY ROAD, REVERSE THE ORIENTATION OF THE DOWEL BARS WITH RESPECT TO TRAFFIC FOR ONE OF THE PATCHES SUCH THAT THE JOINT WILL BE CONTINUOUS ACROSS BOTH LANES.

FILE NAME =	USER NAME = carpenterdj	DESIGNED -	REVISED -	STATE OF ILLINOIS DEPARTMENT OF TRANSPORTATION	CLASS B PATCHING DETAILS		F.A.P. RTE.	SECTION	COUNTY	TOTAL SHEETS	SHEET NO.
pw:\11\084EBIDINTEG.illinois.gov\PI\DOT\Documents\DOT Offices\District 3\Projects\0366\Drawings\0366\0366-99-shr-typical\0366-99-shr-typical.dgn	DRAWN BY =	CHECKED -	REVISED -				623	(30,31)RS-4	LASALLE	25	25
	PLOT SCALE = 100.0000' / 1in.	DATE -	REVISED -				CONTRACT NO. 66E99				
	PLOT DATE = 10/16/2018						ILLINOIS FED. AID PROJECT				