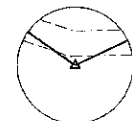


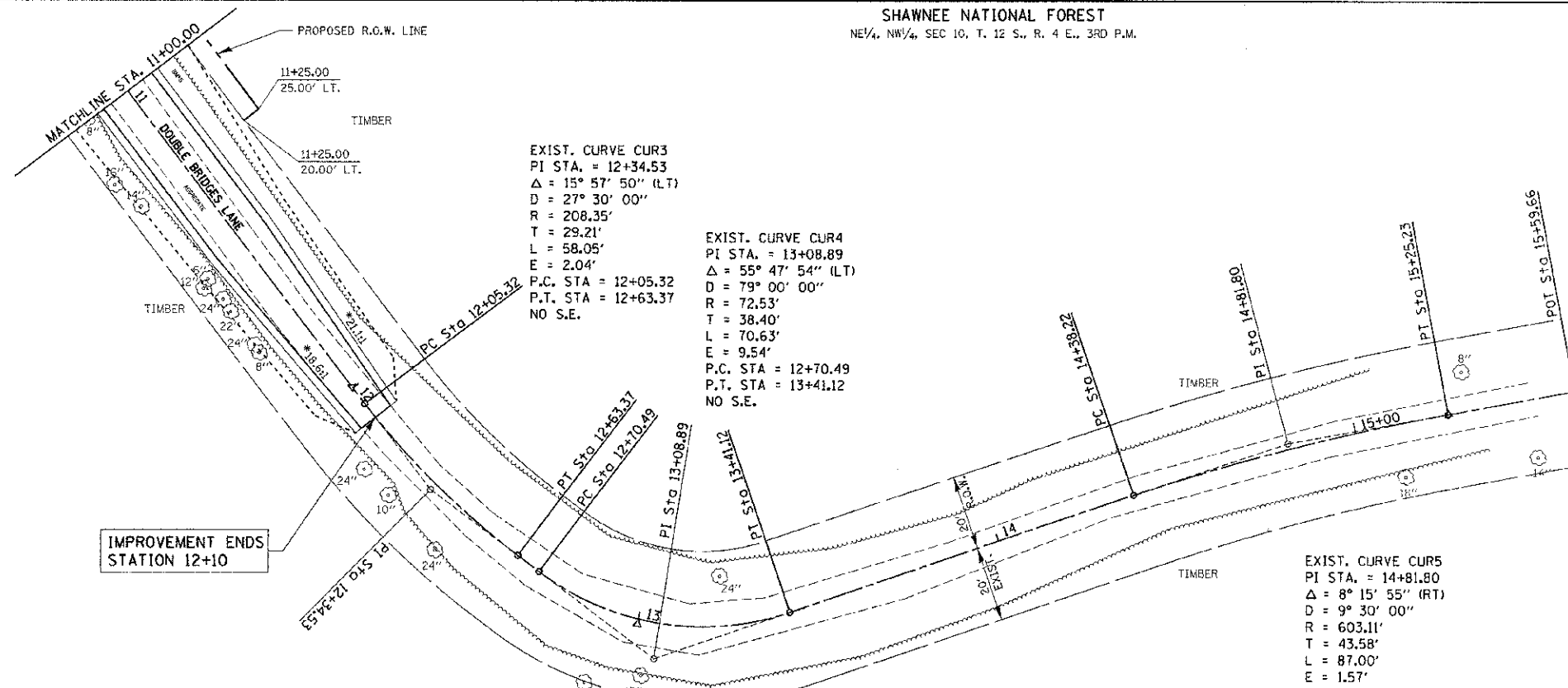
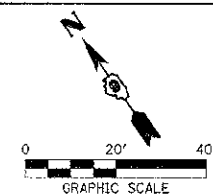


P.I. STA. 12+34.53
(TO BE SET)
N. 301,042.5864
E. 861,526.2807



P.I. STA. 13+08.89
(TO BE SET)
N. 301,771.4625
E. 861,549.2345

SHAWNEE NATIONAL FOREST
NE 1/4, NW 1/4, SEC 10, T. 12 S., R. 4 E., 3RD P.M.



EXIST. CURVE CUR3
PI STA. = 12+34.53
Δ = 15° 57' 50" (LT)
D = 27° 30' 00"
R = 208.35'
T = 29.21'
L = 58.05'
E = 2.04'
P.C. STA = 12+05.32
P.T. STA = 12+63.37
NO S.E.

EXIST. CURVE CUR4
PI STA. = 13+08.89
Δ = 55° 47' 54" (LT)
D = 79° 00' 00"
R = 72.53'
T = 38.40'
L = 70.63'
E = 9.54'
P.C. STA = 12+70.49
P.T. STA = 13+41.12
NO S.E.

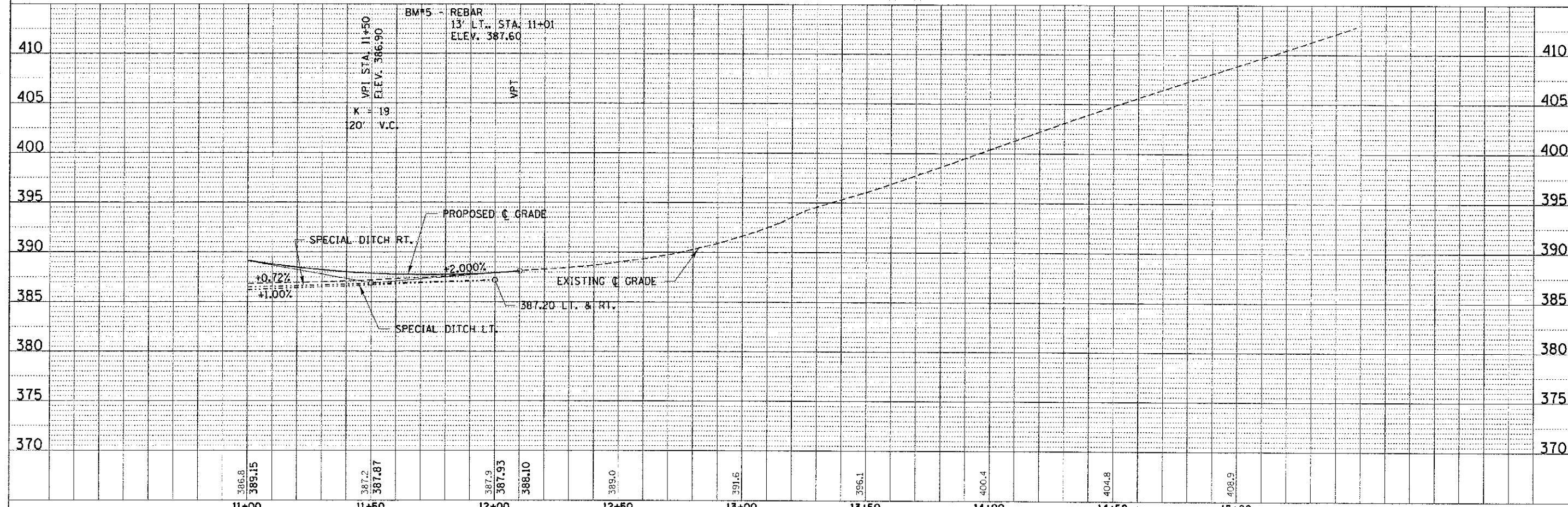
EXIST. CURVE CUR5
PI STA. = 14+81.80
Δ = 8° 15' 55" (RT)
D = 9° 30' 00"
R = 603.11'
T = 43.58'
L = 87.00'
E = 1.57'
P.C. STA = 14+38.22
P.T. STA = 15+25.23

*TRANSITION FROM THE PROPOSED ROADWAY TO THE EXISTING ROADWAY IS TO BE CONSTRUCTED FROM STA. 11+50 TO 12+10.

SHAWNEE NATIONAL FOREST
NE 1/4, NW 1/4, SEC 10, T. 12 S., R. 4 E., 3RD P.M.

DATE	
BY	
PROF. FILE	
NOTED	
NOTED	
NOTED	
NO.	

DATE	
BY	
PROF. FILE	
NOTED	
NOTED	
NOTED	
NO.	



FILE NAME = 110136-sh1-pp2.dgn	USER NAME =	DESIGNED - J.W.F.	REVISED -	<p align="center">STATE OF ILLINOIS JOHNSON COUNTY HIGHWAY DEPARTMENT</p>	<p align="center">PLAN & PROFILE T.R. 85 / DOUBLE BRIDGES LANE</p>		T.R.	SECTION	COUNTY	TOTAL SHEETS	SHEET NO.
HAMPTON, LENZINI AND RENWICK, INC.		DRAWN - T.W.K.	REVISED -		85	10-01218-00-RR	JOHNSON	19	5		
1341 ESTERHART DRIVE, ST. LOUIS, MO 63103		CHECKED - M.G.B.	REVISED -		COUNTY UNIT ROAD DISTRICT				CONTRACT NO. 99476		
ILLINOIS PROFESSIONAL DESIGN FIRM		DATE - 10/29/12	REVISED -		SCALE: H20xV5	SHEET NO. 2 OF 2 SHEETS	STA. 11+00.00 TO STA. 15+59.66	ILLINOIS FEEL AND PROJECT			