

STATE OF ILLINOIS
DEPARTMENT OF TRANSPORTATION
DIVISION OF HIGHWAYS

**PROPOSED
HIGHWAY PLANS**

FAP ROUTE 885 (IL 146)
SECTION 11B-1
PROJECT: ACBRF-0885(047)
STRUCTURE REPLACEMENT OVER
PETERS CREEK
SN 035-0012 (EX.)
SN 035-0016 (PR.)
HARDIN COUNTY
C-99-006-10

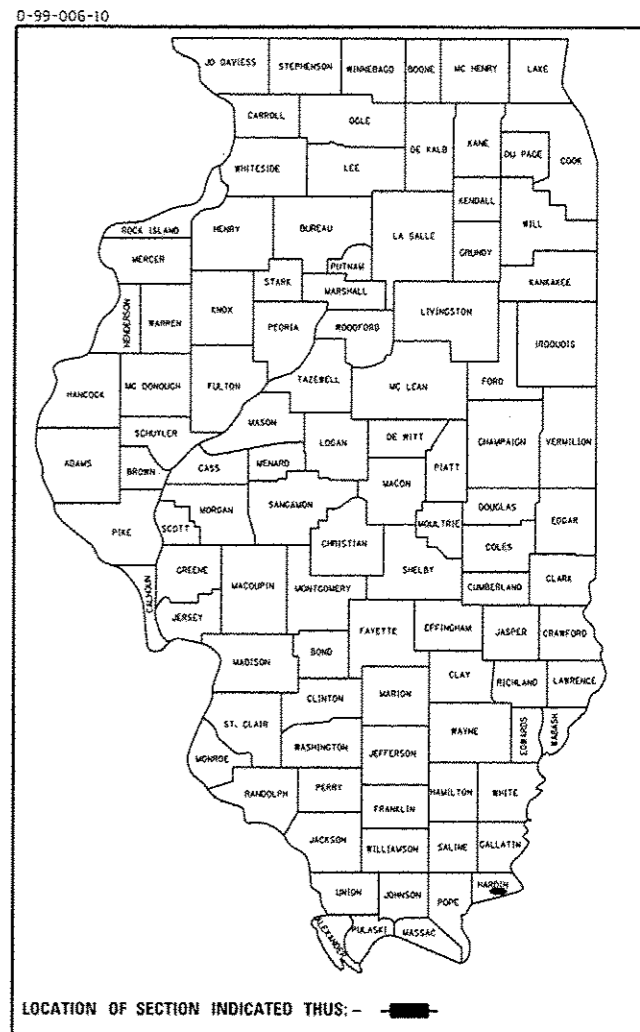
F.A.P. RTE.	SECTION	COUNTY	TOTAL SHEETS	SHEET NO.
885	11B-1	HARDIN	50	1
ILLINOIS CONTRACT NO. 78152				

INDEX OF SHEETS

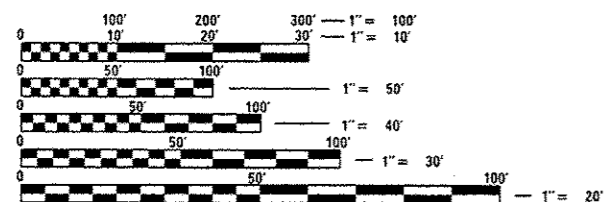
- 1 COVER SHEET
- 2 GENERAL NOTES, COMMITMENTS, STANDARDS AND SIGNATURES
- 3-8 SUMMARY OF QUANTITIES
- 9 TYPICAL ROADWAY SECTION
- 10-12 SCHEDULES
- 13 PLAN AND PROFILE
- 14 STAGE I CONSTRUCTION PLAN
- 15 STAGE II CONSTRUCTION PLAN
- 16 GUARDRAIL AND SHOULDER LAYOUT
- 17 EROSION CONTROL
- 18 WIDE LOAD DETOUR
- 19 TRAFFIC BARRIER TERMINAL, TYPE 6 (SPECIAL)
- 20 MISCELLANEOUS DETAILS
- 21-41 STRUCTURE PLANS
- 42-50 CROSS SECTIONS
STANDARDS

TRAFFIC DATA

2009 ADT = 2190
5.48 % TRUCKS
POSTED SPEED = 55 MPH

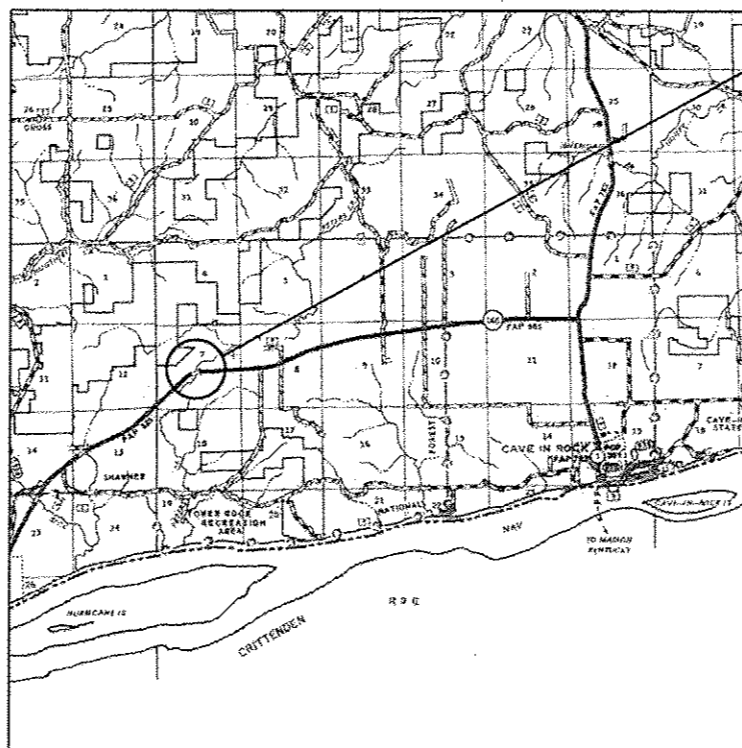


CAVE IN ROCK TOWNSHIP HARDIN COUNTY ROAD DISTRICT #01



FULL SIZE PLANS HAVE BEEN PREPARED USING STANDARD ENGINEERING SCALES. REDUCED SIZED PLANS WILL NOT CONFORM TO STANDARD SCALES. IN MAKING MEASUREMENTS ON REDUCED PLANS, THE ABOVE SCALES MAY BE USED.

J.U.L.I.E.
JOINT UTILITY LOCATION INFORMATION FOR EXCAVATION
1-800-892-0123
OR 811



PROPOSED PROJECT LOCATION
PROPOSED STR STA 228+28.00
SN 035-0012 (EX.)
SN 035-0016 (PR.)
IL 146
OVER PETERS CREEK

PROJECT MANAGER: DAVID PICHE (618) 351-5227
PROJECT ENGINEER: BILL PORTER (618) 351-5224

GROSS LENGTH = 195 FT. = 0.04 MILE
NET LENGTH = 195 FT. = 0.04 MILE

STATE OF ILLINOIS
DEPARTMENT OF TRANSPORTATION
DIVISION OF HIGHWAYS

SUBMITTED Oct 16 2012
Omey Amann
DEPUTY DIRECTOR OF HIGHWAYS, REGION ENGINEER

Dec 7 2012
John D. Baranzelli P.E.
acting ENGINEER OF DESIGN AND ENVIRONMENT

Dec 7 2012
William R. Frey
acting DIRECTOR OF HIGHWAYS, CHIEF ENGINEER

**PRINTED BY THE AUTHORITY
OF THE STATE OF ILLINOIS**

CONTRACT NO. 78152