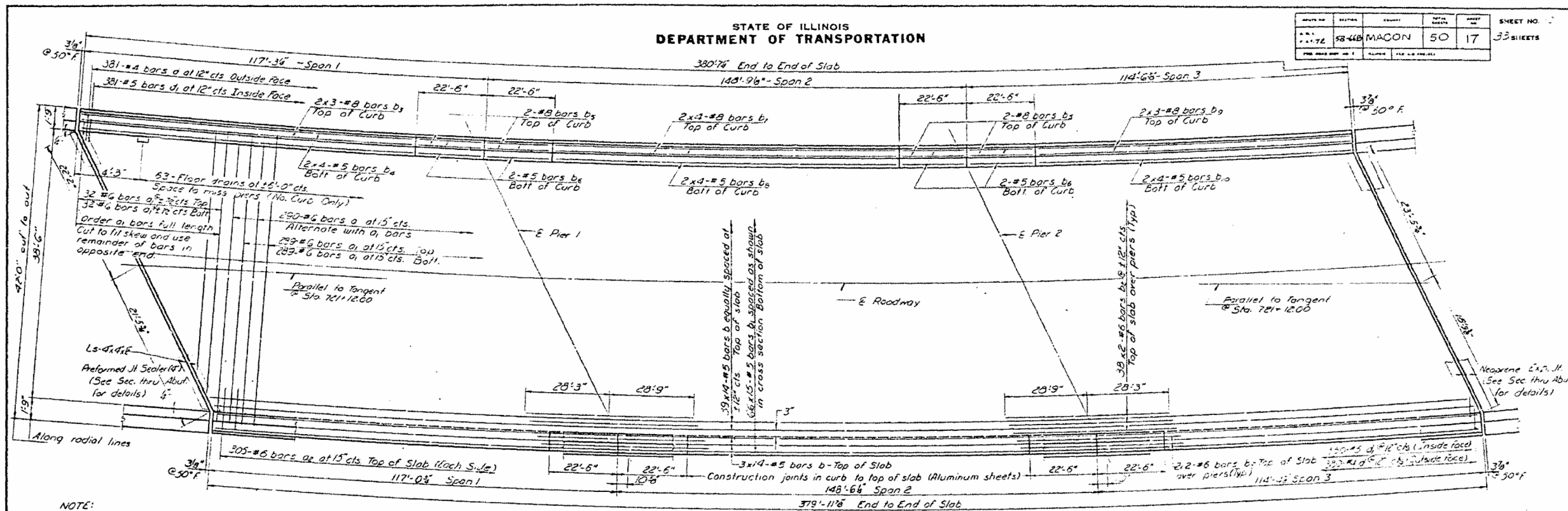


STATE OF ILLINOIS
DEPARTMENT OF TRANSPORTATION

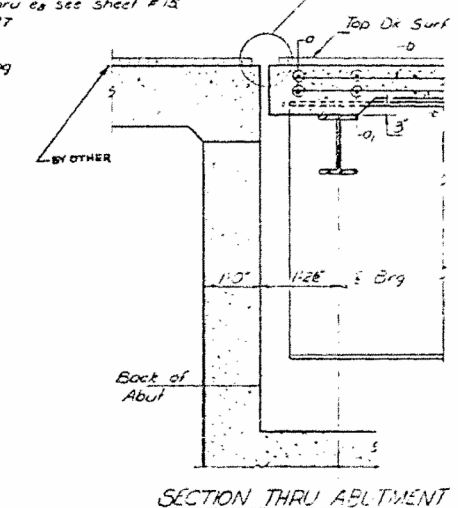
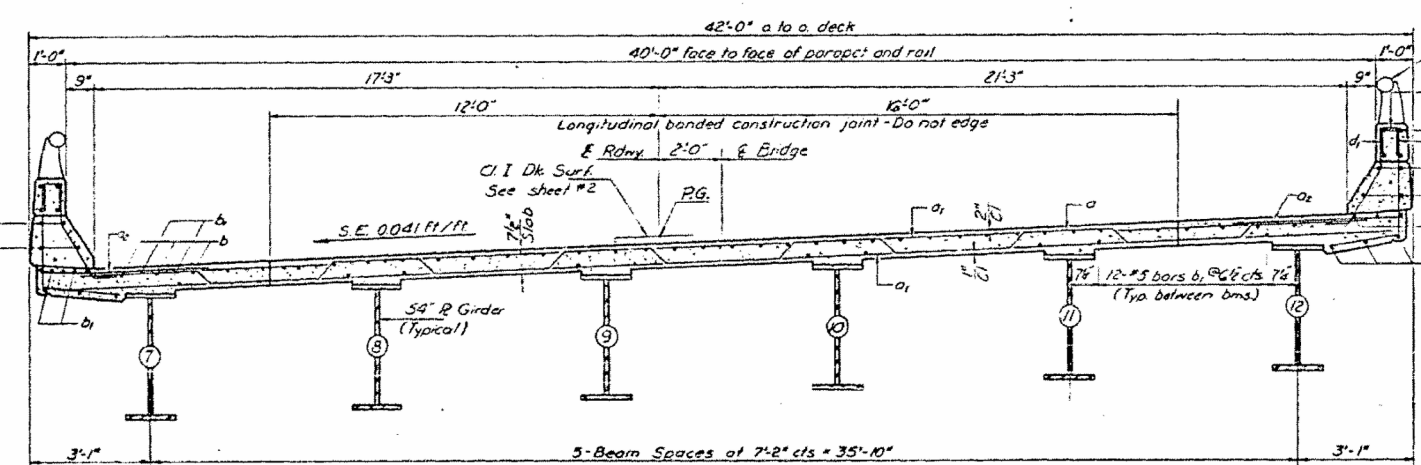
ROUTE NO.	SECTION	COUNTY	TOTAL SHEETS	SHEET NO.
58-44B	MACON	50	17	33 SHEETS



NOTE:
Bars indicated thus 39x14 #6 etc.
indicates 39 lines of bars with 14
lengths per line.
Min. bar laps = 24 dia.

PLAN
(Horizontal dimensions along inside
face of curb)

Note:
For placement of bars d₄
to thru e₃ see sheet #15
thru #17



BILL OF MATERIAL

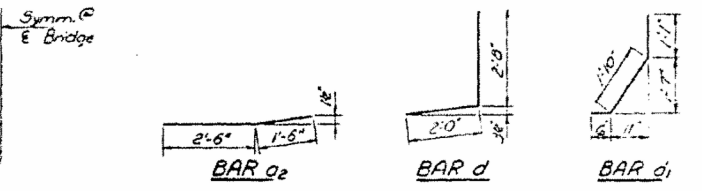
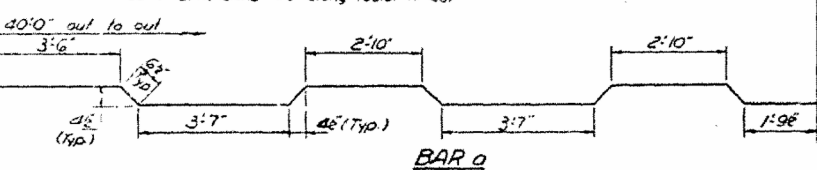
Bar	No.	Size	Length	Space
a	20	#3	51.5'	
a ₁	64	#5	25.0'	
a ₂	410	#5	4.5'	
b	330	#5	24.5'	
b ₁	768	#5	20.9'	
b ₂	12	#8	23.0'	
b ₃	16	#8	22.9'	
b ₄	16	#8	22.3'	
b ₅	16	#8	27.0'	
b ₆	12	#8	28.3'	
b ₇	16	#5	23.0'	
c	761	#5	4.8'	
d	761	#5	3.5'	

Class X Concrete Cu. Wt. 4303
Reinforcement Bars Round 125,000

Parallel reinforcement and Class X
Concrete are billed on sheet #17
See sheet #11 for Curb Section.

DESIGNED: *St. G. S. Linn*
CHECKED: *R. D. Ody*
DRAWN: *R. D. Ody*
CHECKED: *R. D. Ody*

EXAMINED: *Feb 21 1013*
PASSED: *W. E. Cauffman*
APPROVED: *Richard J. Halterman*



SUPERSTRUCTURE DETAILS
EAST BOUND LINES
AL RT 72 - SEC. 58-66B
MACON COUNTY
STA. 721+1200