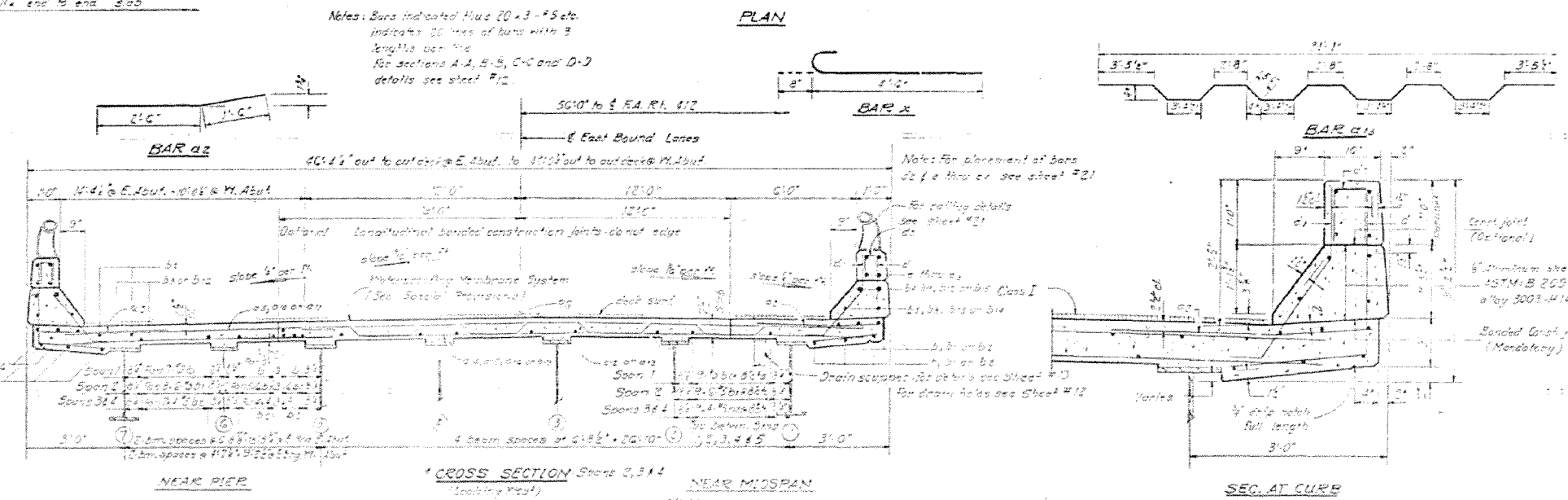
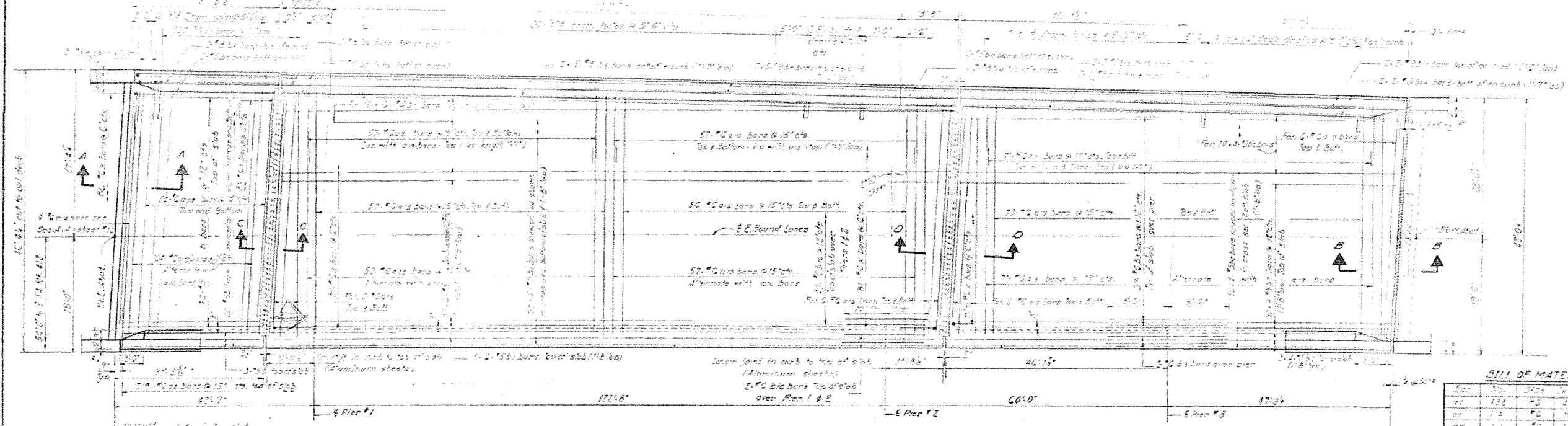


STATE OF ILLINOIS
DEPARTMENT OF TRANSPORTATION

DATE OF SHEET	DATE OF PROJECT	TOTAL SHEETS	SHEET NO.
10/23/12	MACT	27	13

33 SHEETS



DESIGNED	EXAMINED
CHECKED	PASSED
DRAWN	APPROVED
CHECKED	

BILL OF MATERIAL

Bar	Qty	Size	Length	Weight
a1	138	#5	3'-0"	138
a2	12	#5	10'-0"	120
b1	12	#5	10'-0"	120
b2	12	#5	10'-0"	120
b3	12	#5	10'-0"	120
b4	12	#5	10'-0"	120
b5	12	#5	10'-0"	120
b6	12	#5	10'-0"	120
b7	12	#5	10'-0"	120
b8	12	#5	10'-0"	120
b9	12	#5	10'-0"	120
b10	12	#5	10'-0"	120
b11	12	#5	10'-0"	120
b12	12	#5	10'-0"	120
b13	12	#5	10'-0"	120
b14	12	#5	10'-0"	120
b15	12	#5	10'-0"	120
b16	12	#5	10'-0"	120
b17	12	#5	10'-0"	120
b18	12	#5	10'-0"	120
b19	12	#5	10'-0"	120
b20	12	#5	10'-0"	120
b21	12	#5	10'-0"	120
b22	12	#5	10'-0"	120
b23	12	#5	10'-0"	120
b24	12	#5	10'-0"	120
b25	12	#5	10'-0"	120
b26	12	#5	10'-0"	120
b27	12	#5	10'-0"	120
b28	12	#5	10'-0"	120
b29	12	#5	10'-0"	120
b30	12	#5	10'-0"	120
b31	12	#5	10'-0"	120
b32	12	#5	10'-0"	120
b33	12	#5	10'-0"	120
b34	12	#5	10'-0"	120
b35	12	#5	10'-0"	120
b36	12	#5	10'-0"	120
b37	12	#5	10'-0"	120
b38	12	#5	10'-0"	120
b39	12	#5	10'-0"	120
b40	12	#5	10'-0"	120
b41	12	#5	10'-0"	120
b42	12	#5	10'-0"	120
b43	12	#5	10'-0"	120
b44	12	#5	10'-0"	120
b45	12	#5	10'-0"	120
b46	12	#5	10'-0"	120
b47	12	#5	10'-0"	120
b48	12	#5	10'-0"	120
b49	12	#5	10'-0"	120
b50	12	#5	10'-0"	120
b51	12	#5	10'-0"	120
b52	12	#5	10'-0"	120
b53	12	#5	10'-0"	120
b54	12	#5	10'-0"	120
b55	12	#5	10'-0"	120
b56	12	#5	10'-0"	120
b57	12	#5	10'-0"	120
b58	12	#5	10'-0"	120
b59	12	#5	10'-0"	120
b60	12	#5	10'-0"	120
b61	12	#5	10'-0"	120
b62	12	#5	10'-0"	120
b63	12	#5	10'-0"	120
b64	12	#5	10'-0"	120
b65	12	#5	10'-0"	120
b66	12	#5	10'-0"	120
b67	12	#5	10'-0"	120
b68	12	#5	10'-0"	120
b69	12	#5	10'-0"	120
b70	12	#5	10'-0"	120
b71	12	#5	10'-0"	120
b72	12	#5	10'-0"	120
b73	12	#5	10'-0"	120
b74	12	#5	10'-0"	120
b75	12	#5	10'-0"	120
b76	12	#5	10'-0"	120
b77	12	#5	10'-0"	120
b78	12	#5	10'-0"	120
b79	12	#5	10'-0"	120
b80	12	#5	10'-0"	120
b81	12	#5	10'-0"	120
b82	12	#5	10'-0"	120
b83	12	#5	10'-0"	120
b84	12	#5	10'-0"	120
b85	12	#5	10'-0"	120
b86	12	#5	10'-0"	120
b87	12	#5	10'-0"	120
b88	12	#5	10'-0"	120
b89	12	#5	10'-0"	120
b90	12	#5	10'-0"	120
b91	12	#5	10'-0"	120
b92	12	#5	10'-0"	120
b93	12	#5	10'-0"	120
b94	12	#5	10'-0"	120
b95	12	#5	10'-0"	120
b96	12	#5	10'-0"	120
b97	12	#5	10'-0"	120
b98	12	#5	10'-0"	120
b99	12	#5	10'-0"	120
b100	12	#5	10'-0"	120

Aluminum sheet
ASTM B 209
6' x 10' x .011

Bonded Coat (Mandatory)

Notes: Bars indicated plus 20 x 3 - #5 etc. indicates 20' lengths of bars with 3 lengths per 10'. For sections A-A, B-B, C-C and D-D details see sheet #12.

VARIOUS ROUTES
D7 BRIDGE PAINTING 2013-2