

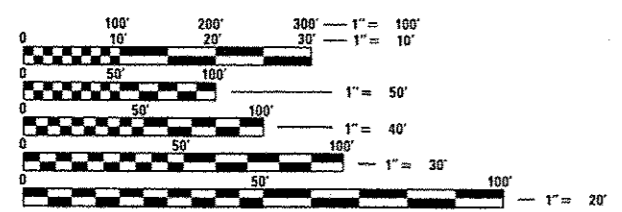
STATE OF ILLINOIS
 DEPARTMENT OF TRANSPORTATION
 DIVISION OF HIGHWAYS
**PROPOSED
 HIGHWAY PLANS**
 VARIOUS ROUTES
 SECTION D7 BRIDGE PAINTING 2013-2
 BRIDGE PAINTING
 MACON COUNTY
 C-97-107-12

F.A. RTE.	SECTION	COUNTY	TOTAL SHEETS	SHEET NO.
*	**	MACON	27	1
ILLINOIS			CONTRACT NO. 74580	

* VARIOUS ROUTES
 ** D7 BRIDGE PAINTING 2013-2

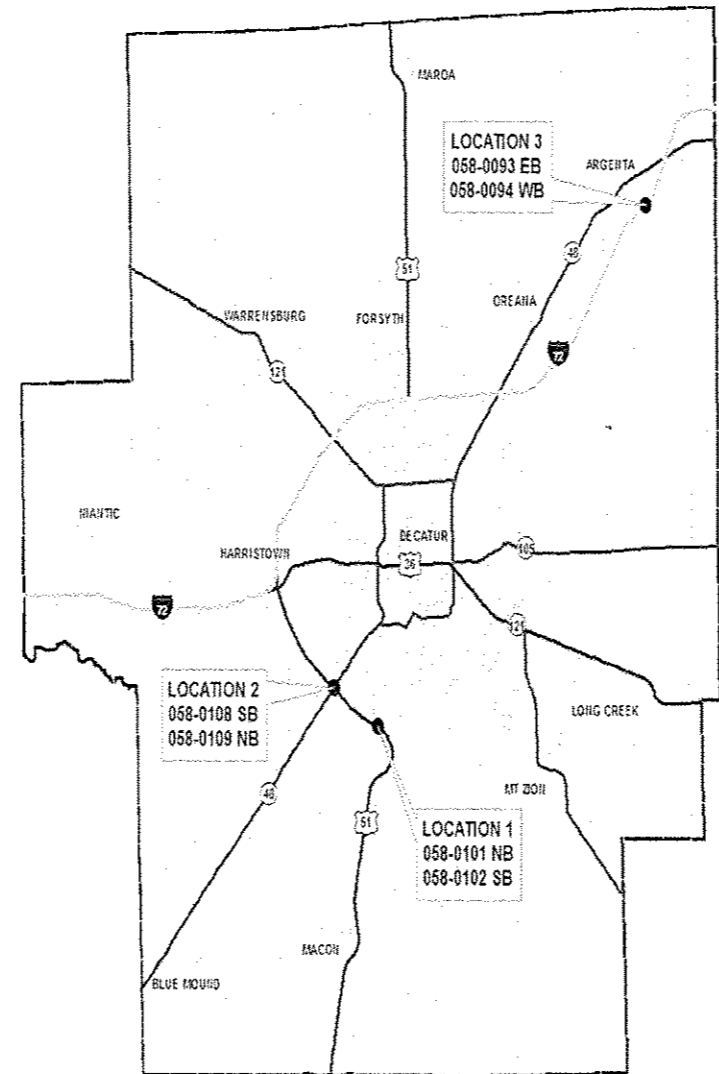
FOR INDEX OF SHEETS, SEE SHEET NO. 2

ADT'S
 U.S. 51 = 3,500 (2010)
 I-72 = 10,300 (2010)



FULL SIZE PLANS HAVE BEEN PREPARED USING STANDARD ENGINEERING SCALES. REDUCED SIZED PLANS WILL NOT CONFORM TO STANDARD SCALES. IN MAKING MEASUREMENTS ON REDUCED PLANS, THE ABOVE SCALES MAY BE USED.

J.U.L.I.E.
 JOINT UTILITY LOCATION INFORMATION FOR EXCAVATION
 1-800-892-0123
 OR 811



PROJECT ENGINEER: TOM RONAN
 PROJECT MANAGER: TOM RONAN
 PHONE: (217)-342-8320
 CONTRACT NO. 74580

STATE OF ILLINOIS
 DEPARTMENT OF TRANSPORTATION
 DIVISION OF HIGHWAYS

SUBMITTED Dec 3 20 12
Roger L. Drishell
 DEPUTY DIRECTOR OF HIGHWAYS, REGION ENGINEER

Dec 7 20 12
John D. Baranzelli, P.E. /BL
 acting ENGINEER OF DESIGN AND ENVIRONMENT

Dec 7 20 12
William R. Fry
 acting DIRECTOR OF HIGHWAYS, CHIEF ENGINEER

**PRINTED BY THE AUTHORITY
 OF THE STATE OF ILLINOIS**