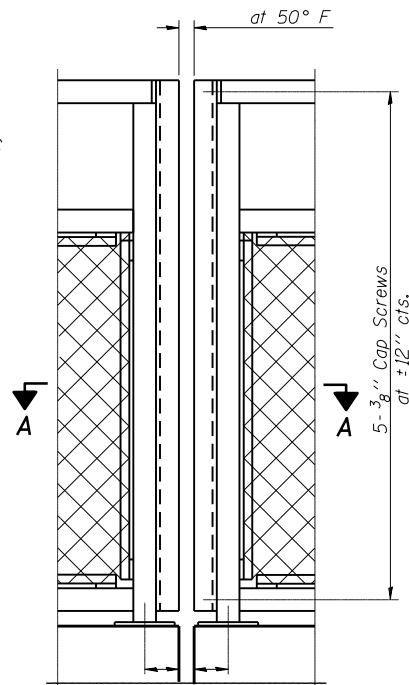
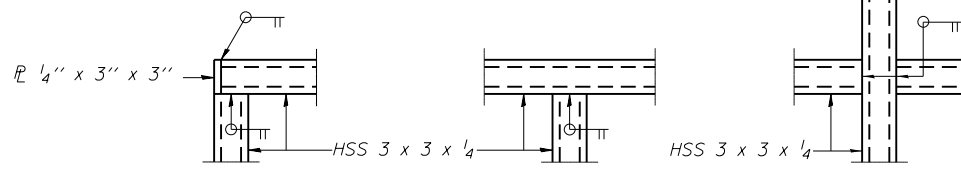


**BICYCLE RAILING**



**BICYCLE RAILING**

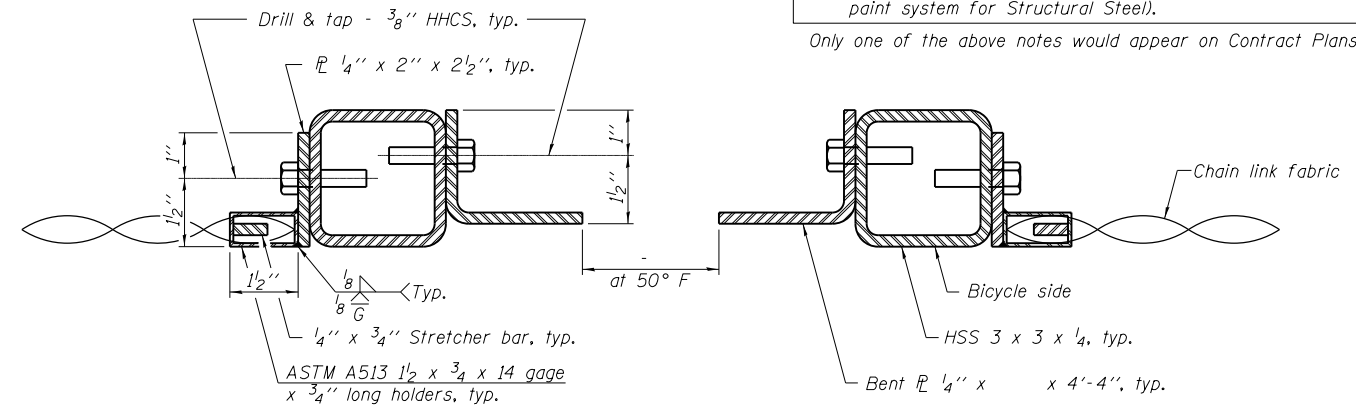


**DETAIL A**

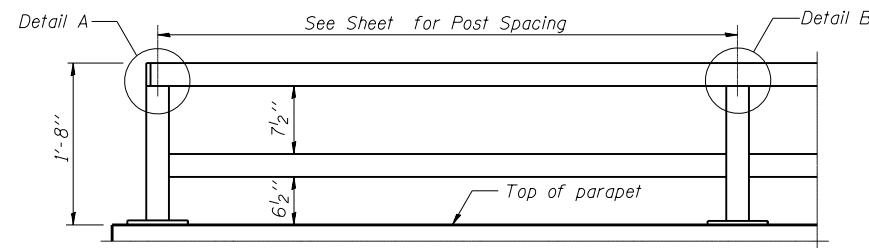
**DETAIL B**

**DETAIL C**

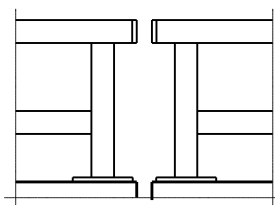
The designer should add the appropriate note as applicable.  
 A. When railing is galvanized:  
 All steel rail elements shall be galvanized according to Article 509.05 of the Standard Specifications.  
 B. When railing is painted:  
 All post, railing, splices, anchor devices, and bent plates shall be painted using the (List the appropriate paint system for Structural Steel).  
 Only one of the above notes would appear on Contract Plans.



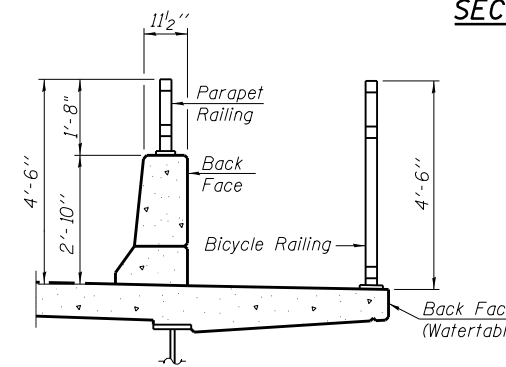
**SECTION A-A**



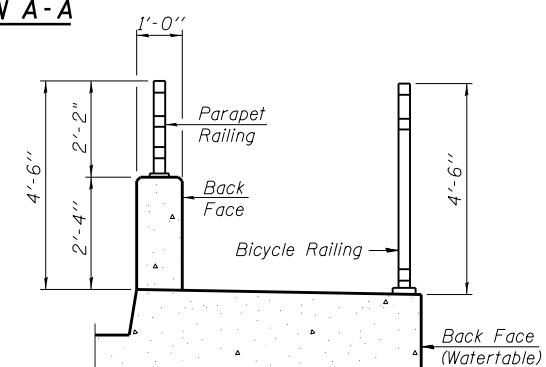
**PARAPET RAILING  
ELEVATION**  
(Inside Face of Two Element Rail)



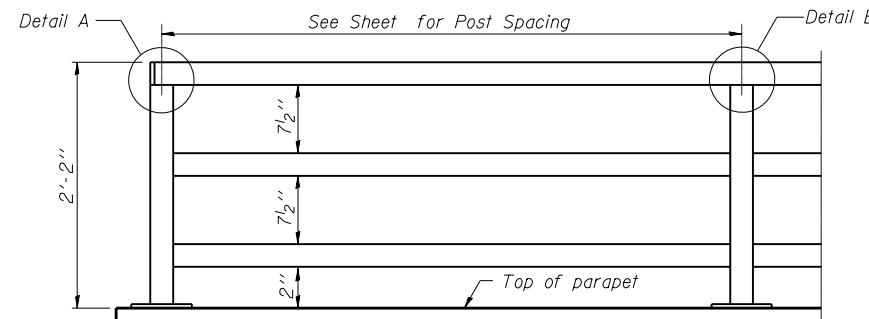
**PARAPET RAILING  
ELEVATION AT EXPANSION JOINT**  
(Two Element Rail Shown - Three Element Rail Similar)



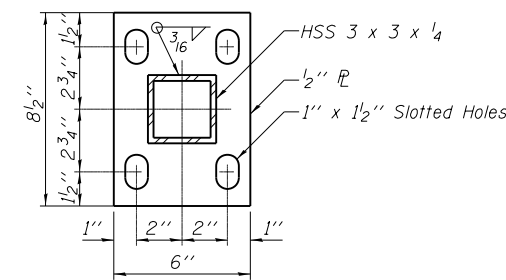
**SECTION THRU DECK**



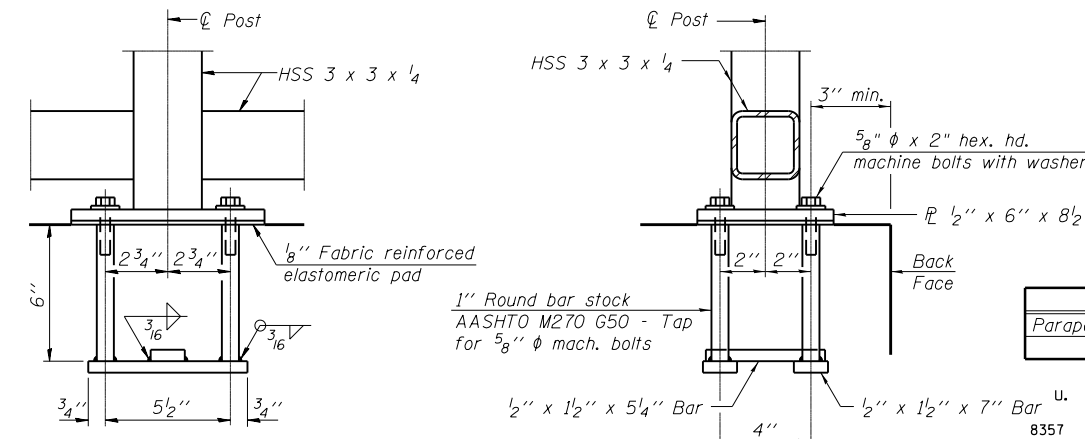
**SECTION THRU SIDEWALK**



**PARAPET RAILING  
ELEVATION**  
(Inside Face of Three Element Rail)



**BASE PL**

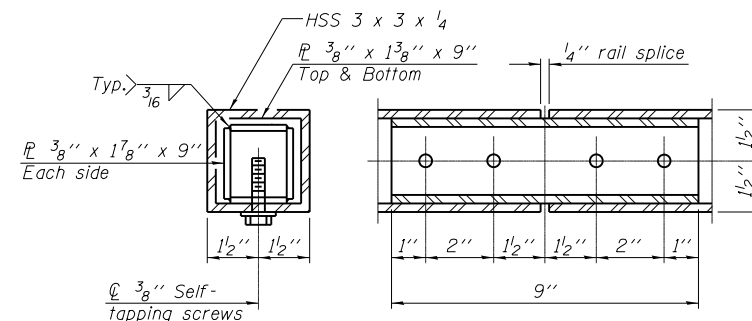


**ANCHOR BOLT DETAILS**

In lieu of the cast-in-place anchor device shown, the Contractor has the option of drilling and setting 5/8" φ anchor rods according to Article 509.06 of the Standard Specifications. Embedment shall be according to the manufacturer's specifications.

**BILL OF MATERIAL**

Item	Unif	Quantity
Parapet Railing	Foot	298



**RAIL SPLICE**

R-29 11-1-09 (10'-0" Maximum Post Spacing)

FILE NAME =	USER NAME = steffenmk	DESIGNED -	REVISED -
ei:\pwork\pwork\dtdot\steffenmk\dms50671\74316-shr-details.dgn		DRAWN -	REVISED -
		CHECKED -	REVISED -
		DATE -	REVISED -

STATE OF ILLINOIS  
DEPARTMENT OF TRANSPORTATION

PARAPET RAILING DETAIL

SCALE: NA SHEET NO. 1 OF 1 SHEETS STA. TO STA.

F.A.S. RTE.	SECTION	COUNTY	TOTAL SHEETS	SHEET NO.
2796	(L,K)I-2	EFFINGHAM	22	13
			CONTRACT NO. 74316	

**BICYCLE RAILING  
STRUCTURE NO.**

(L,K)I-2

ILLINOIS FED. AID PROJECT