
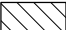
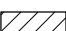



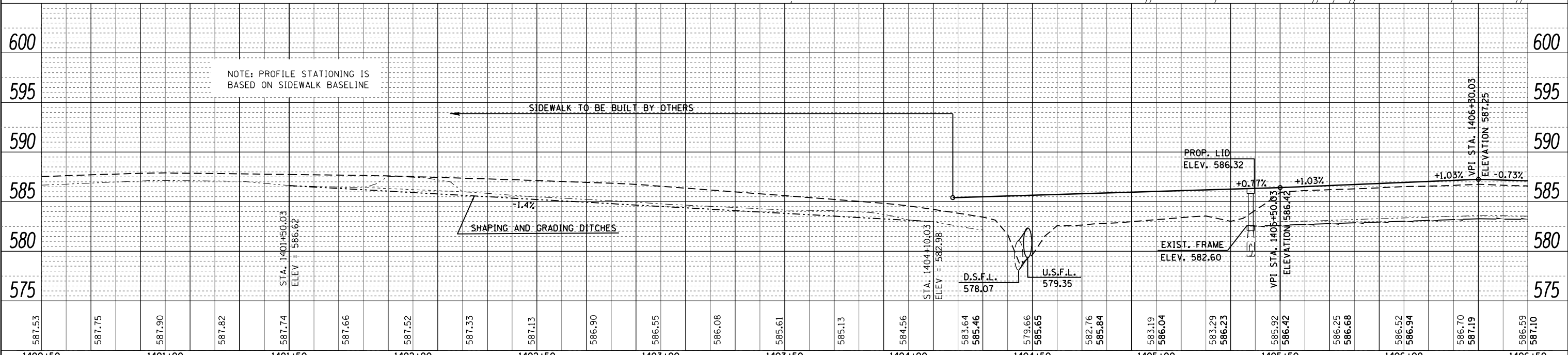
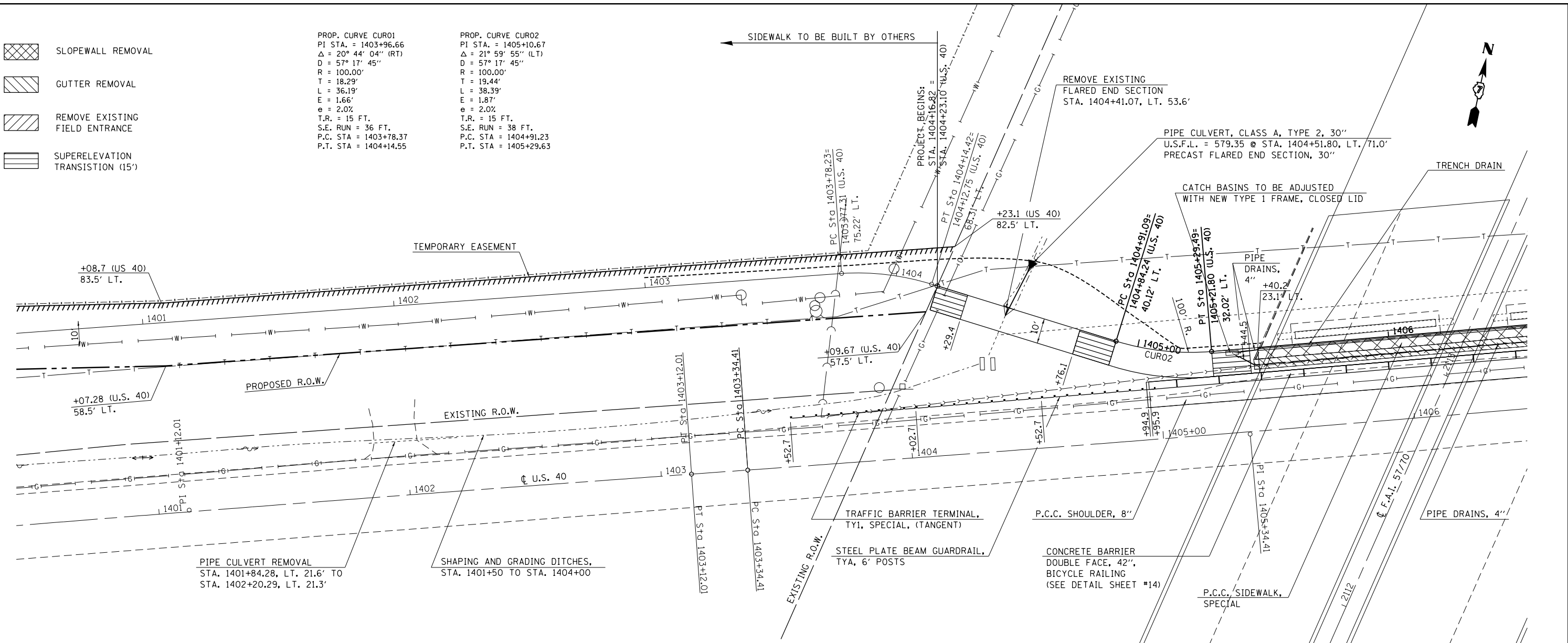
PLAN	SURVEYED	DATE
	PLOTTED	BY
	NOTE BOOK	
	ALIGNED	
	CHECKED	
	FILE NAME	
	NO.	

PROFILE	SURVEYED	DATE
	PLOTTED	BY
	NOTE BOOK	
	GRADES CHECKED	
	STRUCTURE	
	NOTATIONS CHECKED	
	NO.	

-  SLOPEWALL REMOVAL
-  GUTTER REMOVAL
-  REMOVE EXISTING FIELD ENTRANCE
-  SUPERELEVATION TRANSITION (15')

PROP. CURVE CUR01
 PI STA. = 1403+96.66
 $\Delta = 20^\circ 44' 04''$ (RT)
 $D = 57^\circ 17' 45''$
 $R = 100.00'$
 $T = 18.29'$
 $L = 36.19'$
 $E = 1.66'$
 $e = 2.0\%$
 $T.R. = 15$ FT.
 $S.E. RUN = 36$ FT.
 $P.C. STA = 1403+78.37$
 $P.T. STA = 1404+14.55$

PROP. CURVE CUR02
 PI STA. = 1405+10.67
 $\Delta = 21^\circ 59' 55''$ (LT)
 $D = 57^\circ 17' 45''$
 $R = 100.00'$
 $T = 19.44'$
 $L = 38.39'$
 $E = 1.87'$
 $e = 2.0\%$
 $T.R. = 15$ FT.
 $S.E. RUN = 38$ FT.
 $P.C. STA = 1404+91.23$
 $P.T. STA = 1405+29.63$



FILE NAME =	USER NAME = steffenmk	DESIGNED -	REVISED -
c:\pwork\pwork\stefmk\dms50671\0774316-sht-plnprof.dgn		DRAWN -	REVISED -
PLOT SCALE = 40.0000' / in.		CHECKED -	REVISED -
PLOT DATE = 10/2/2012		DATE -	REVISED -

**STATE OF ILLINOIS
 DEPARTMENT OF TRANSPORTATION**

SIDEWALK PLAN

SCALE: 20 SHEET NO. 2 OF 5 SHEETS STA. 1400+50 TO STA. 1406+50

F.A.S. RTE.	SECTION	COUNTY	TOTAL SHEETS	SHEET NO.
2796	(L,K)I-2	EFFINGHAM	22	9
CONTRACT NO. 74316			ILLINOIS FED. AID PROJECT	