

F.A.S. RTE.	SECTION	COUNTY	TOTAL SHEETS	SHEET NO.
2796	(L,K)I-2	EFFINGHAM	22	1
		ILLINOIS	CONTRACT NO. 74316	

STATE OF ILLINOIS
DEPARTMENT OF TRANSPORTATION
DIVISION OF HIGHWAYS

**PROPOSED
HIGHWAY PLANS**

F.A.S. ROUTE 2796 (U.S. RTE. 40)
SECTION (L,K)I-2

MULTI-USE PATH
EFFINGHAM COUNTY

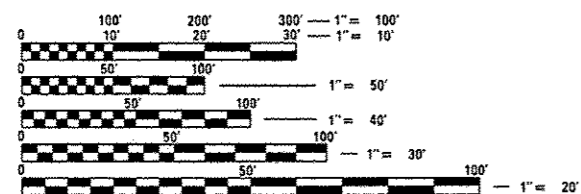
C-97-077-08

FOR INDEX OF SHEETS, SEE SHEET NO. 2

D-97-032-08



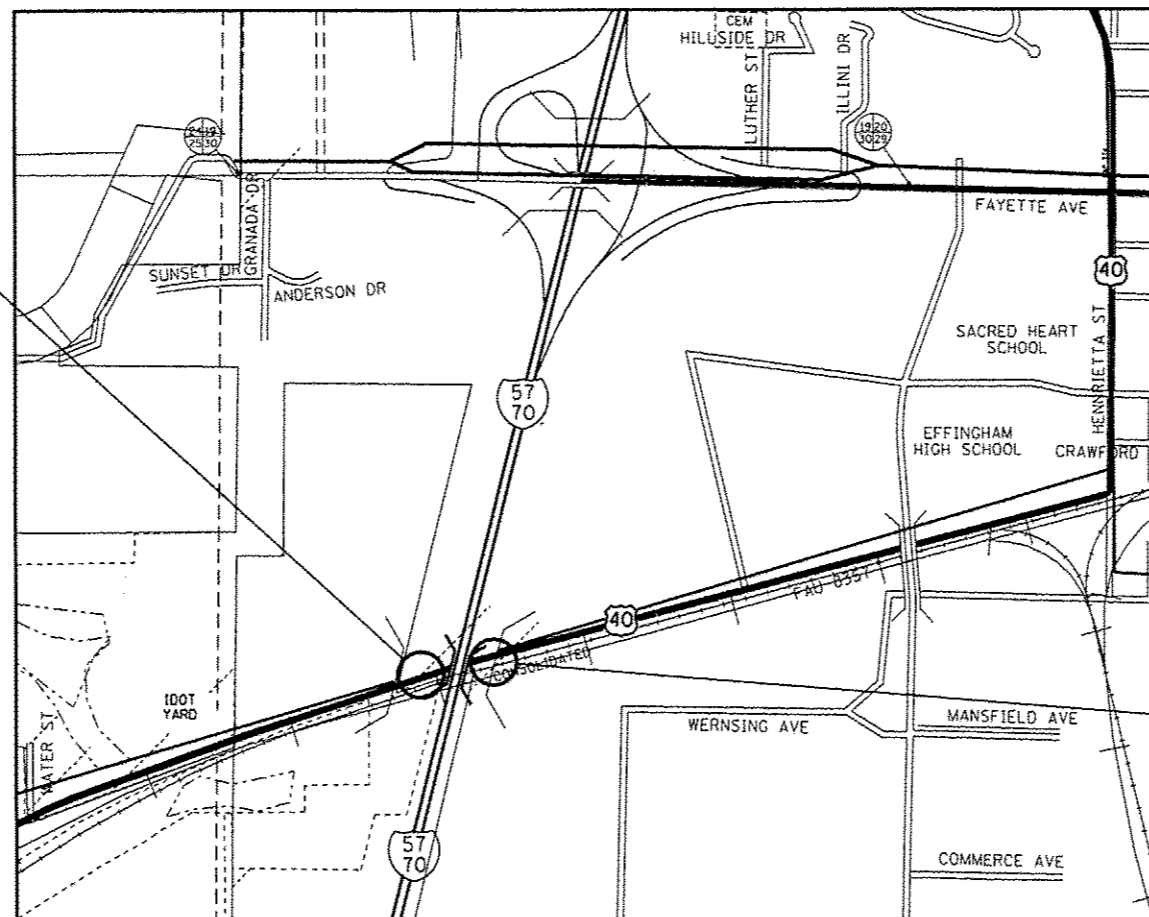
PROJECT BEGINS:
STATION 1404 + 16.82



FULL SIZE PLANS HAVE BEEN PREPARED USING STANDARD ENGINEERING SCALES. REDUCED SIZED PLANS WILL NOT CONFORM TO STANDARD SCALES. IN MAKING MEASUREMENTS ON REDUCED PLANS, THE ABOVE SCALES MAY BE USED.

J.U.L.I.E.
JOINT UTILITY LOCATION INFORMATION FOR EXCAVATION
1-800-892-0123
OR 811

PROJECT ENGINEER: TOM RONAN
PROJECT MANAGER: JEFF DAVISON
PHONE: (217)-342-8340
CONTRACT NO. 74316



GROSS LENGTH = 2801.3 FT. = 0.53 MILE
NET LENGTH = 2801.3 FT. = 0.53 MILE

PROJECT ENDS:
STATION 1408 + 89.21

STATE OF ILLINOIS
DEPARTMENT OF TRANSPORTATION
DIVISION OF HIGHWAYS

SUBMITTED Oct 19 20 12
Roger L. Driskell /ccs
DEPUTY DIRECTOR OF HIGHWAYS, REGION ENGINEER

Dec 2 20 12
John D. Baranzelli, PE, IA
ENGINEER OF DESIGN AND ENVIRONMENT

Dec 2 20 12
William B. Frey, IA
DIRECTOR OF HIGHWAYS, CHIEF ENGINEER

PRINTED BY THE AUTHORITY
OF THE STATE OF ILLINOIS