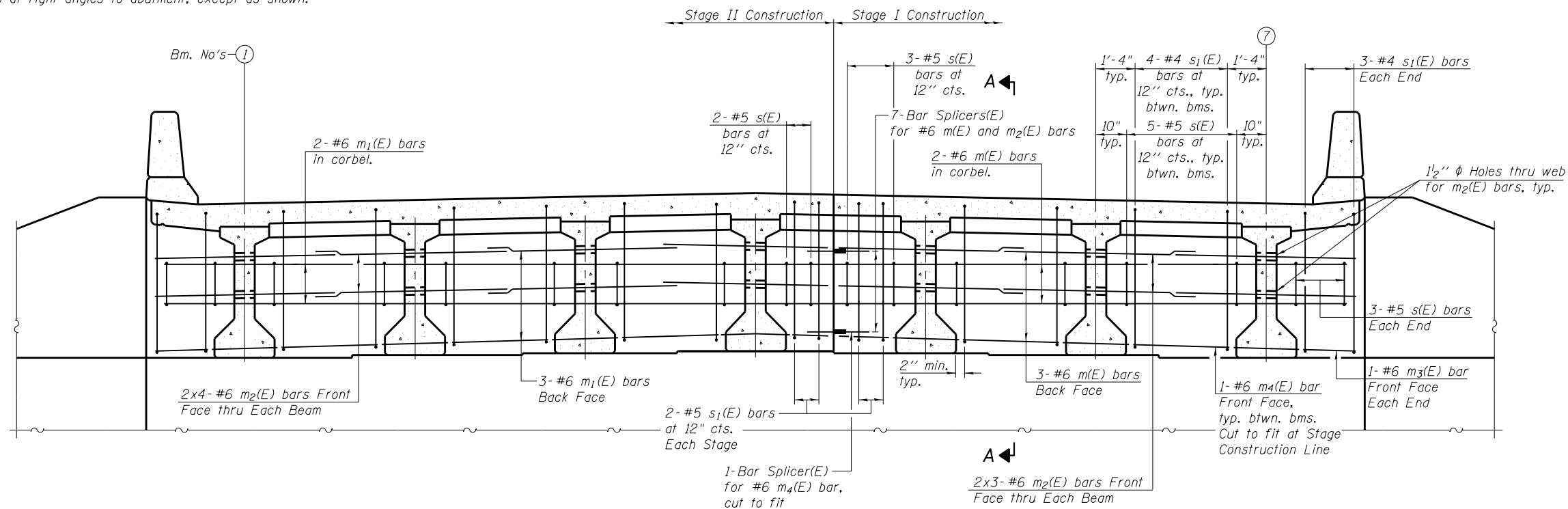


SECTION A-A

Dimensions at right angles to abutment, except as shown.

Notes:
 Reinforcement bars in diaphragm are billed with superstructure on sheet 10 of 22.
 Concrete in diaphragm is included with Concrete Superstructure on sheet 10 of 22.
 For details of bars s(E) and s1(E) see sheet 10 of 22.
 The s(E) and s1(E) bars shall be placed parallel to the beams.
 Spacing for these bars shall be at right angles to the beams.



DIAPHRAGM ELEVATION AT ABUTMENT

East Abutment looking east

MIN. BAR LAP

#6 bar = 3'-4"

FILE NAME = c:\projects\116BR-1\116BR-1.dwg
 CB PROJECT NO. 10800E-1

Coome-Bloxdorf P.C.
 CIVIL ENGINEERS
 STRUCTURAL ENGINEERS
 LAND SURVEYORS
 Design Firm License No. 184-002703

USER NAME = sparksgw	DESIGNED - CME	REVISED -
CHECKED - MCB	REVISOR -	
PLOT SCALE = 0:2.0000 '1' / in.	DRAWN - MML	REVISED -
PLOT DATE = Oct-19-2012 02:14:46PM	CHECKED - MCB	REVISED -

**STATE OF ILLINOIS
 DEPARTMENT OF TRANSPORTATION**

**DIAPHRAGM DETAILS
 STRUCTURE NO. 059-0515**

SHEET NO. 11 OF 22 SHEETS

F.A.P. RTE.	SECTION	COUNTY	TOTAL SHEETS	SHEET NO.
325	116BR-1	MACOUPIN	67	47
CONTRACT NO. 72A19				

ILLINOIS FED. AID PROJECT