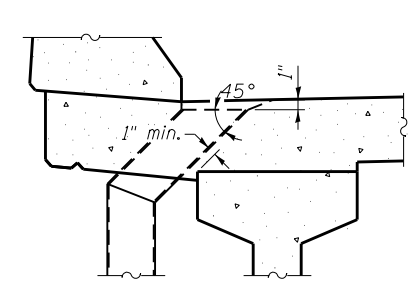
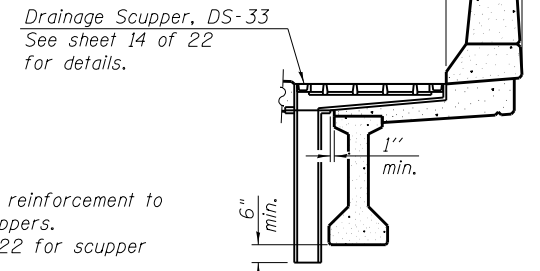


INSIDE ELEVATION OF PARAPET

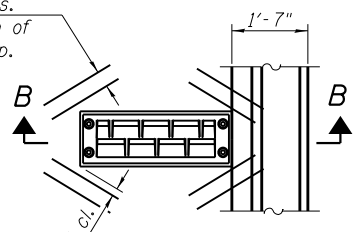


DETAIL A



SECTION B-B

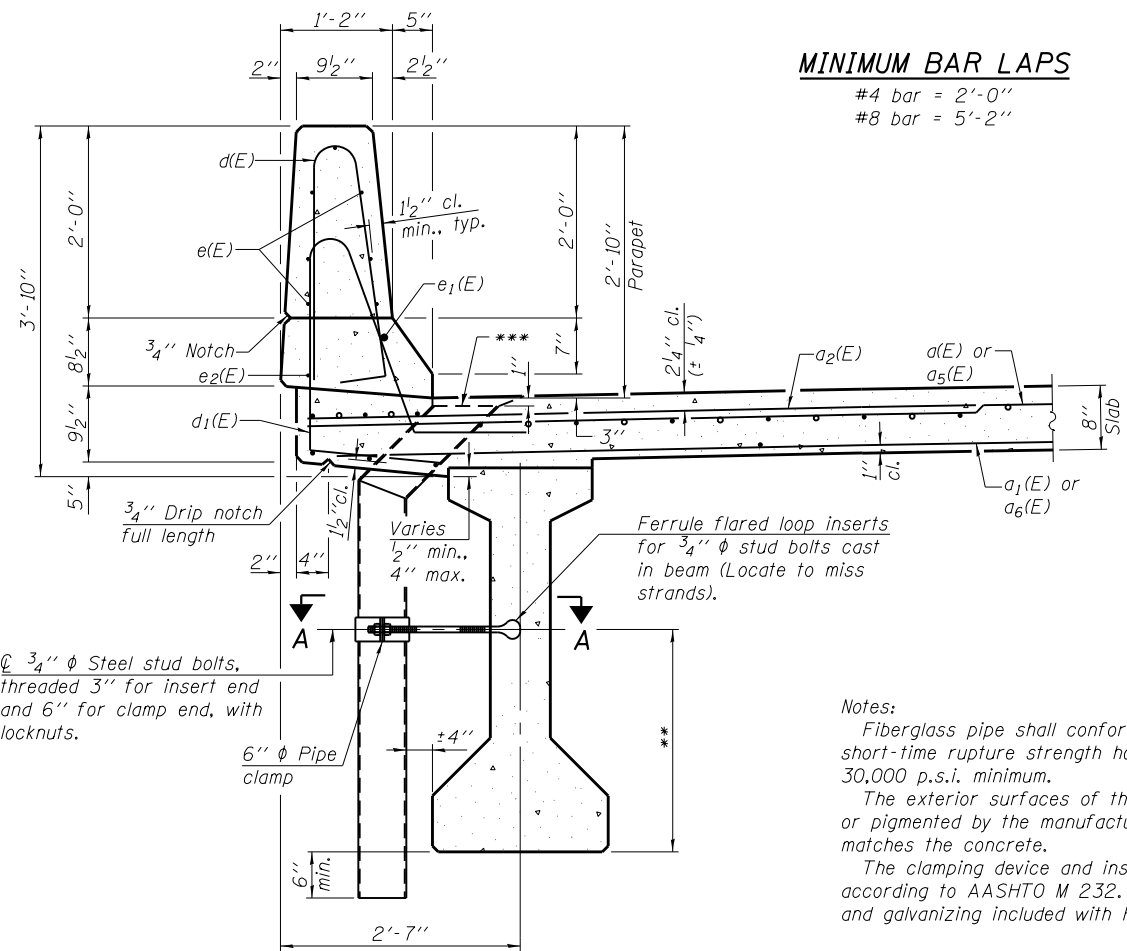
Notes: Cut longitudinal reinforcement to clear drainage scuppers. See Sheet 1 of 22 for scupper locations.



**PLAN
DETAIL AT SCUPPER
LOCATIONS**

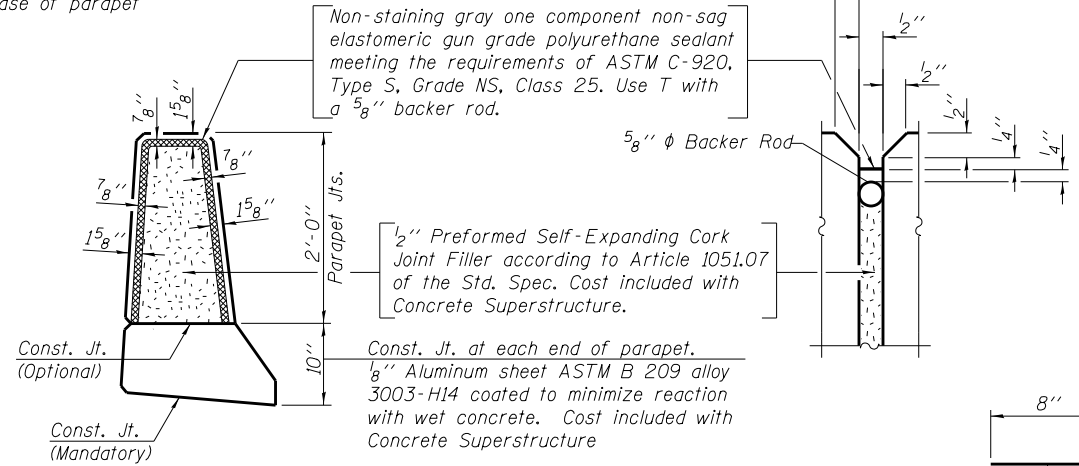
MINIMUM BAR LAPS

#4 bar = 2'-0"
#8 bar = 5'-2"

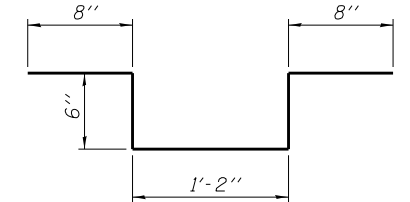


SECTION THRU PARAPET

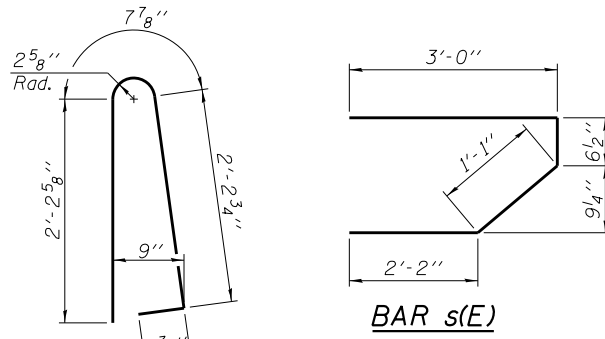
**For insert locations see sheet 16 of 22.
***Angle drain as required, see Detail A.



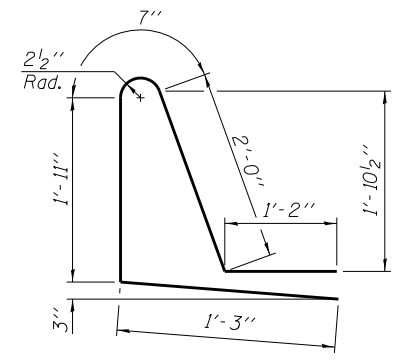
PARAPET JOINT DETAILS



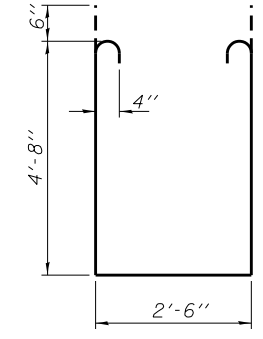
BAR s5(E)



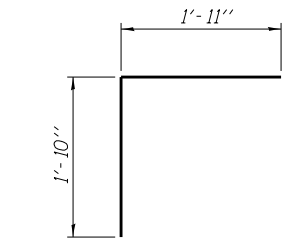
BAR s(E)



BAR d1(E)



BAR s1(E)



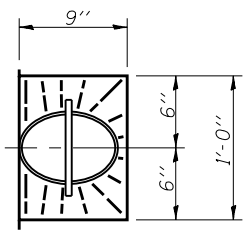
BAR v(E)

**SUPERSTRUCTURE
BILL OF MATERIAL**

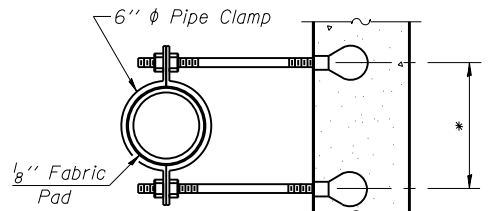
Bar	No.	Size	Length	Shape
a(E)	133	#5	16'-7"	—
a1(E)	120	#5	16'-0"	—
a2(E)	266	#6	6'-6"	—
a3(E)	4	#5	19'-1"	—
a4(E)	4	#5	24'-11"	—
a5(E)	133	#5	21'-7"	—
a6(E)	120	#5	21'-0"	—
a7(E)	48	#5	2'-0"	—
b(E)	126	#5	35'-0"	—
b1(E)	120	#5	26'-11"	—
b2(E)	28	#4	25'-0"	—
d(E)	220	#5	5'-7"	┘
d1(E)	220	#5	6'-11"	┘
e(E)	70	#4	19'-8"	—
e1(E)	6	#8	36'-8"	—
e2(E)	8	#4	26'-5"	—
m(E)	10	#6	19'-4"	—
m1(E)	10	#6	25'-2"	—
m2(E)	28	#6	8'-9"	—
m3(E)	4	#6	1'-6"	—
m4(E)	12	#6	4'-1"	—
s(E)	72	#5	6'-10"	┘
s1(E)	60	#4	12'-10"	┘
s5(E)	350	#4	3'-6"	┘
v(E)	80	#5	3'-9"	┘
Reinforcement Bars, Epoxy Coated		Lbs.		29,040
Concrete Superstructure		Cu. Yds.		171.9

Bars indicated thus 1 x 3 - #8 etc. indicates 1 line of bars with 3 lengths per line.

Notes:
Fiberglass pipe shall conform to ASTM D2996, with short-time rupture strength hoop tensile stress of 30,000 p.s.i. minimum.
The exterior surfaces of the floor drains shall be coated or pigmented by the manufacturer with a color that matches the concrete.
The clamping device and inserts shall be galvanized according to AASHTO M 232. Cost of clamping device and galvanizing included with Floor Drains.

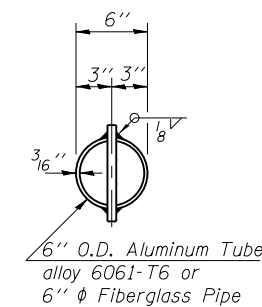


TOP PLAN

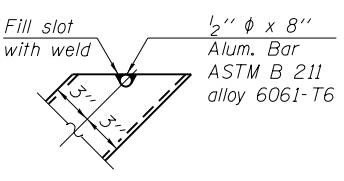


SECTION A-A

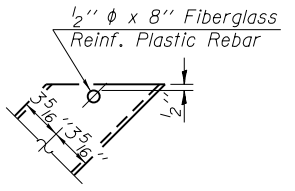
*Dimension as required by Pipe Clamp



**TOP PLAN
(Showing Aluminum Tube)**



**ALUMINUM
TUBE**



**FIBERGLASS
PIPE**

FILE NAME = c:\projects\116br-1\sparks\116br-1-10-08\super-06.dgn
CB PROJECT NO. 108005-1

PI-I-D
7-1-10
Coombe-Bloxdorf P.C.
CIVIL ENGINEERS-
STRUCTURAL ENGINEERS-
LAND SURVEYORS
Design Firm License No. 184-002703

USER NAME = sparks	DESIGNED - CME	REVISED -
PLOT SCALE = 0:2.0000 1' = 1/2"	CHECKED - MCB	REVISED -
PLOT DATE = Oct-19-2012 02:14:45PM	DRAWN - MML	REVISED -
	CHECKED - MCB	REVISED -

**STATE OF ILLINOIS
DEPARTMENT OF TRANSPORTATION**

**SUPERSTRUCTURE DETAILS
STRUCTURE NO. 059-0515**

SHEET NO. 10 OF 22 SHEETS

F.A.P. RTE.	SECTION	COUNTY	TOTAL SHEETS	SHEET NO.
325	116BR-1	MACOUPIN	67	46
				CONTRACT NO. 72A19
ILLINOIS FED. AID PROJECT				