

EXISTING STRUCTURE:

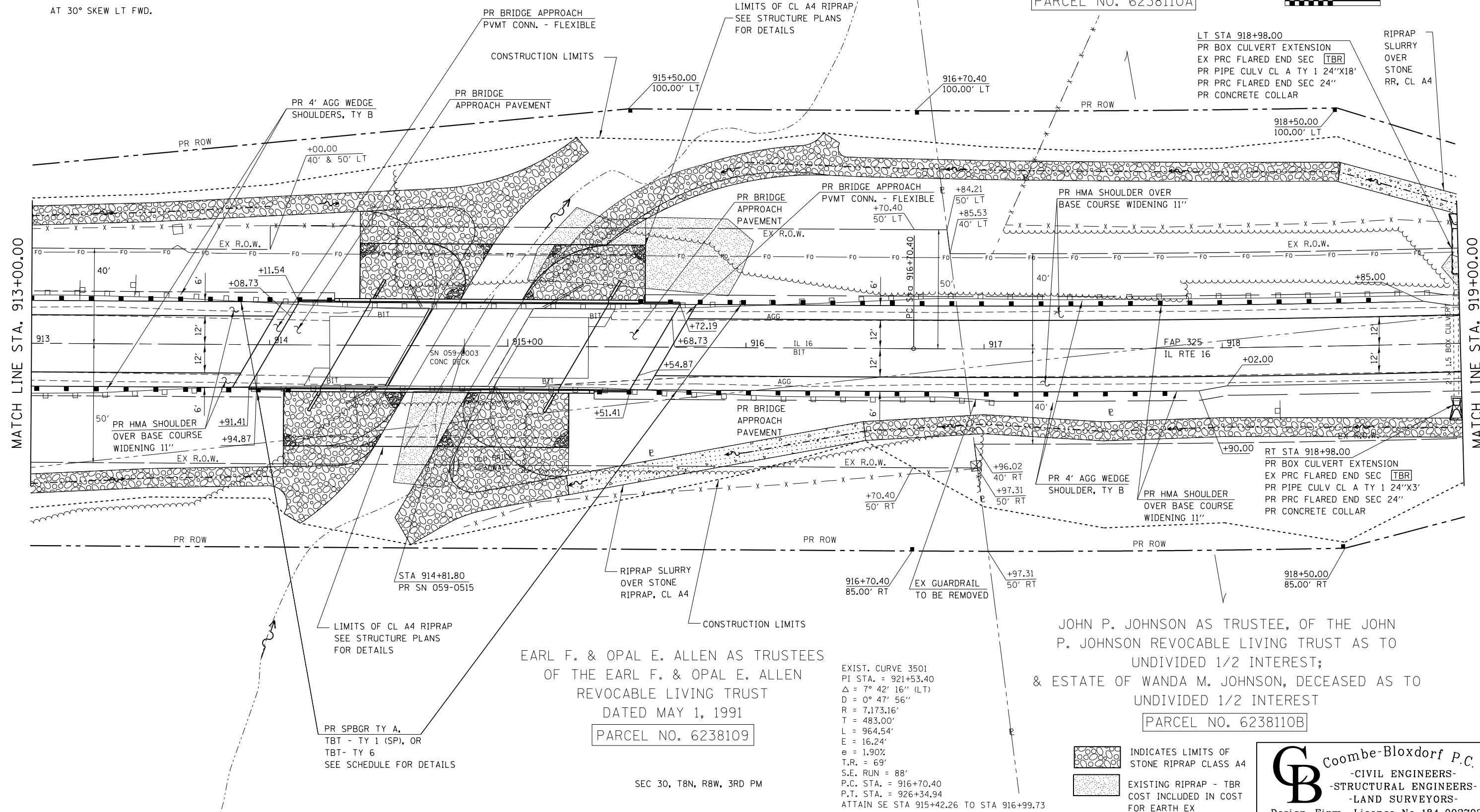
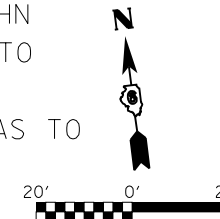
S.N. 059-0003 AT STA. 914+80.00 - SINGLE SPAN P.P.C. DECK BEAM STRUCTURE ON CLOSED CONCRETE ABUTMENTS. 45'-2 1/2" BK.-BK. ABUTS., 33'-0" o.-o. PIERS, AT 30° SKEW LT FWD, TBR

PROPOSED STRUCTURE:

S.N. 059-0515 AT STA. 914+81.80 - SINGLE SPAN STRUCTURE ON INTEGRAL ABUTMENTS. 100'-0" BK.-BK. ABUTS., 39'-2" o.-o. DECK, AT 30° SKEW LT FWD.

GERALD PHILLIP & MARJORIE C. THOMAE
 PARCEL NO. 6238108A

JOHN P. JOHNSON AS TRUSTEE, OF THE JOHN P. JOHNSON REVOCABLE LIVING TRUST AS TO UNDIVIDED 1/2 INTEREST;
 & ESTATE OF WANDA M. JOHNSON, DECEASED AS TO UNDIVIDED 1/2 INTEREST
 PARCEL NO. 6238110A



EARL F. & OPAL E. ALLEN AS TRUSTEES OF THE EARL F. & OPAL E. ALLEN REVOCABLE LIVING TRUST DATED MAY 1, 1991
 PARCEL NO. 6238109

JOHN P. JOHNSON AS TRUSTEE, OF THE JOHN P. JOHNSON REVOCABLE LIVING TRUST AS TO UNDIVIDED 1/2 INTEREST;
 & ESTATE OF WANDA M. JOHNSON, DECEASED AS TO UNDIVIDED 1/2 INTEREST
 PARCEL NO. 6238110B

EXIST. CURVE 3501
 PI STA. = 921+53.40
 $\Delta = 7^\circ 42' 16''$ (LT)
 $D = 0^\circ 47' 56''$
 $R = 7,173.16'$
 $T = 483.00'$
 $L = 964.54'$
 $E = 16.24'$
 $e = 1.90\%$
 $T.R. = 69'$
 $S.E. RUN = 88'$
 $P.C. STA. = 916+70.40$
 $P.T. STA. = 926+34.94$
 ATTAIN SE STA 915+42.26 TO STA 916+99.73

- INDICATES LIMITS OF STONE RIPRAP CLASS A4
- EXISTING RIPRAP - TBR COST INCLUDED IN COST FOR EARTH EX

CB Coombe-Bloxdorf P.C.
 - CIVIL ENGINEERS -
 - STRUCTURAL ENGINEERS -
 - LAND SURVEYORS -
 Design Firm License No. 184-002703

FILE NAME =	USER NAME = sparksgw	DESIGNED -	REVISED -
et:\pw\work\p\idot\sparksgw\0325252\d672\AI9-sht-021-plan-2.dgn		DRAWN -	REVISED -
	PLOT SCALE = 40.000000' / in.	CHECKED -	REVISED -
CB PROJECT NO	PLOT DATE = Oct-19-2012 02:14:12PM	DATE - / /	REVISED -

STATE OF ILLINOIS
 DEPARTMENT OF TRANSPORTATION

PLAN - IL 16
 SCALE: SHEET NO. 2 OF 3 SHEETS STA. 913+00 TO STA. 919+00

F.A.P. RTE.	SECTION	COUNTY	TOTAL SHEETS	SHEET NO.
325	116BR-1	MACOUPIN	67	21
			CONTRACT NO. 72A19	
ILLINOIS FED. AID PROJECT				