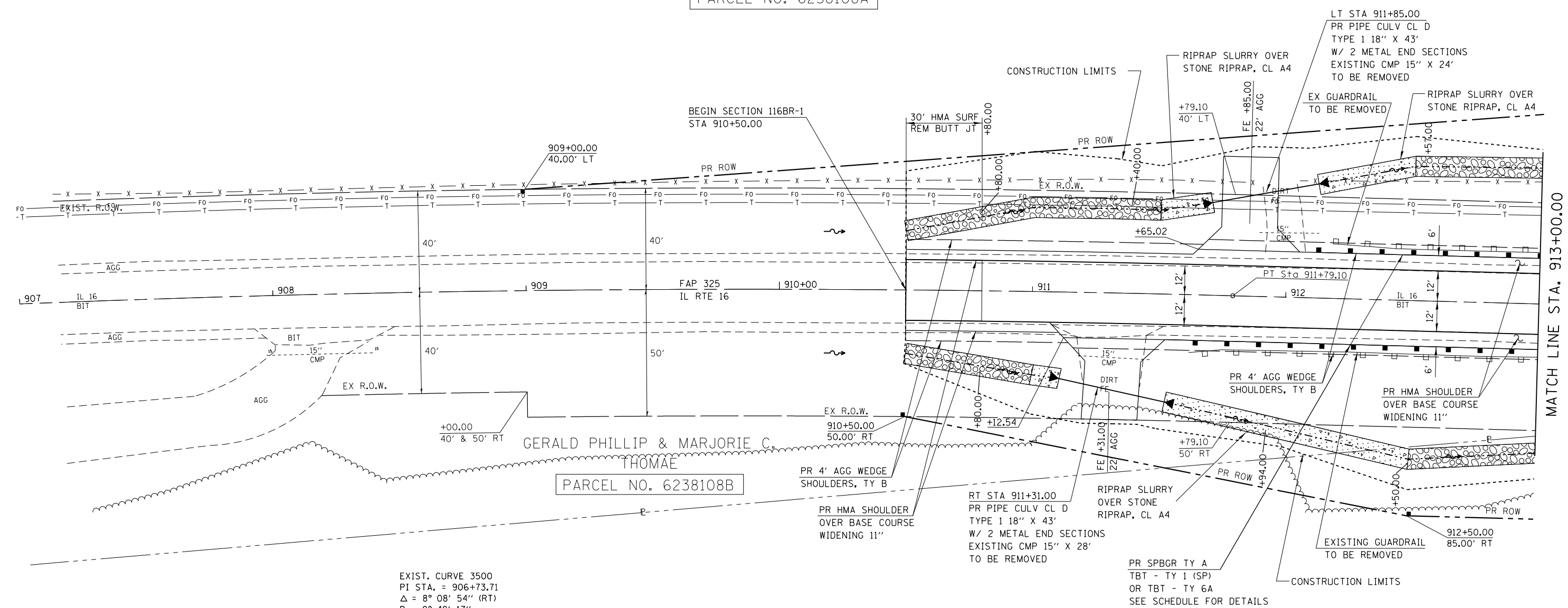


GERALD PHILLIP & MARJORIE C.
THOMAE
PARCEL NO. 6238108A

SEC 19, T8N, R8W, 3RD PM



EXIST. CURVE 3500
PI STA. = 906+73.71
 $\Delta = 8^\circ 08' 54''$ (RT)
D = 0° 48' 17"
R = 7,119.39'
T = 507.10'
L = 1,012.49'
E = 18.04'
e = 1.90%
T.R. = 69
S.E. RUN = 88
P.C. STA. = 901+66.61
P.T. STA. = 911+79.10
REMOVE SE STA 911+49.77 TO STA 913+07.24

SEC 30, T8N, R8W, 3RD PM

EARL F. & OPAL E. ALLEN AS TRUSTEES
OF THE EARL F. & OPAL E. ALLEN
REVOCABLE LIVING TRUST
DATED MAY 1, 1991

PARCEL NO. 6238109

INDICATES LIMITS OF
STONE RIPRAP CLASS A4

CB Coombe-Bloxdorf P.C.
- CIVIL ENGINEERS -
- STRUCTURAL ENGINEERS -
- LAND SURVEYORS -
Design Firm License No. 184-002703

FILE NAME =	USER NAME = sparksgw	DESIGNED -	REVISED -
et:\pw\work\p\dot\sparksgw\10325252\d672A19-sht-019-plan-1.dgn		DRAWN -	REVISED -
	PLOT SCALE = 40.000000' / in.	CHECKED -	REVISED -
CB PROJECT NO	PLOT DATE = Oct-19-2012 02:14:08PM	DATE - / /	REVISED -

STATE OF ILLINOIS
DEPARTMENT OF TRANSPORTATION

PLAN - IL 16

SCALE: SHEET NO. 1 OF 3 SHEETS STA. 907+00 TO STA. 913+00

F.A.P. R.T.E.	SECTION	COUNTY	TOTAL SHEETS	SHEET NO.
325	116BR-1	MACOUPIN	67	19
			CONTRACT NO. 72A19	
ILLINOIS FED. AID PROJECT				