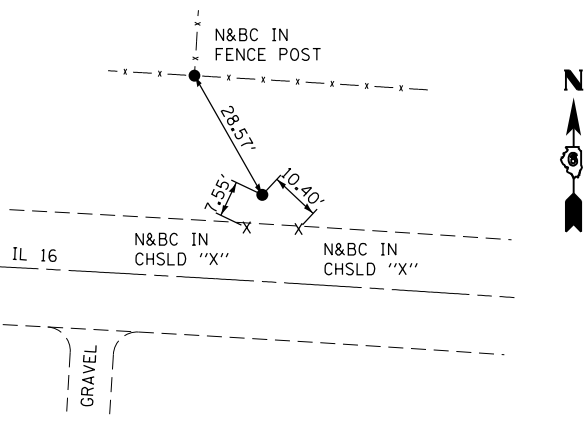


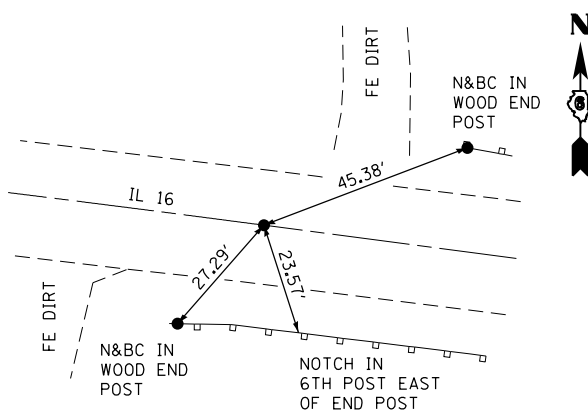
TRAVERSE POINT 200501

#4 REBAR/IDOT CAP (FLUSH)
 STA 906+33.87, 27.61' RT
 N 892157.34700
 E 2334239.3120
 EL 623.332



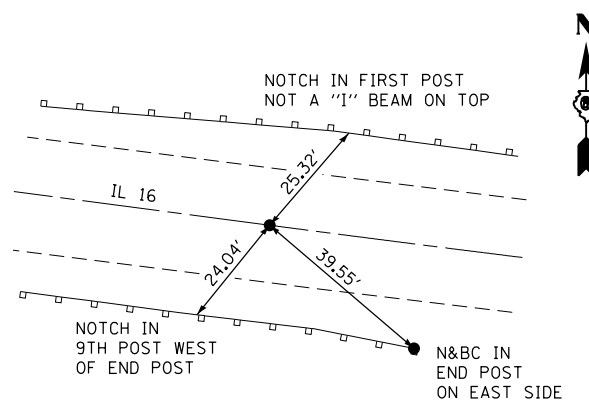
PI STA 906+73.709

#4 REBAR
 N 892200.6971
 E 2334280.8040



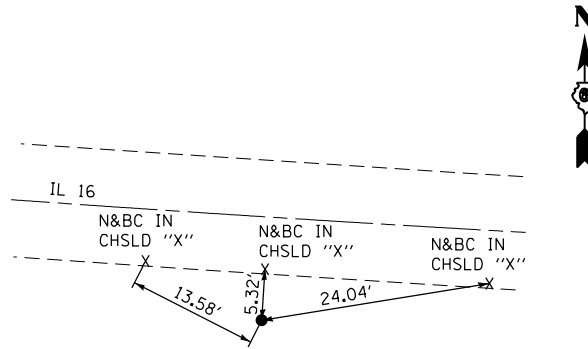
PT STA 911+79.099

PK NAIL IN CHISELED "X"
 N 892134.5376
 E 2334783.5696



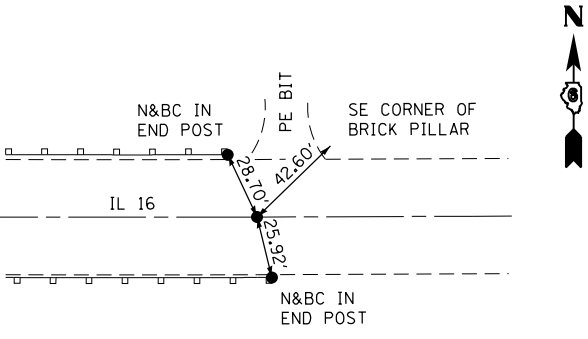
PC STA 916+70.395

PK NAIL IN CHISELED "X"
 N 892070.4400
 E 2335270.6665



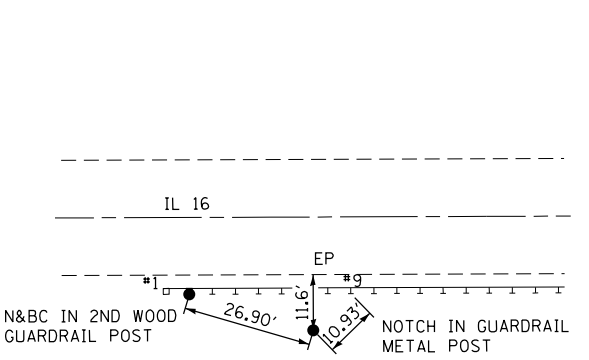
PI STA 921+53.395

#4 REBAR
 N 892007.4248
 E 2335749.5381



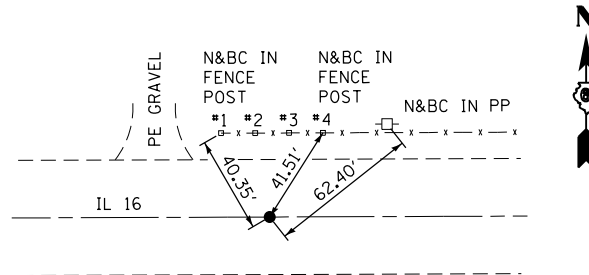
PT STA 926+34.939

PK NAIL IN CHISELED "X"
 N 892009.1763
 E 2336232.5350



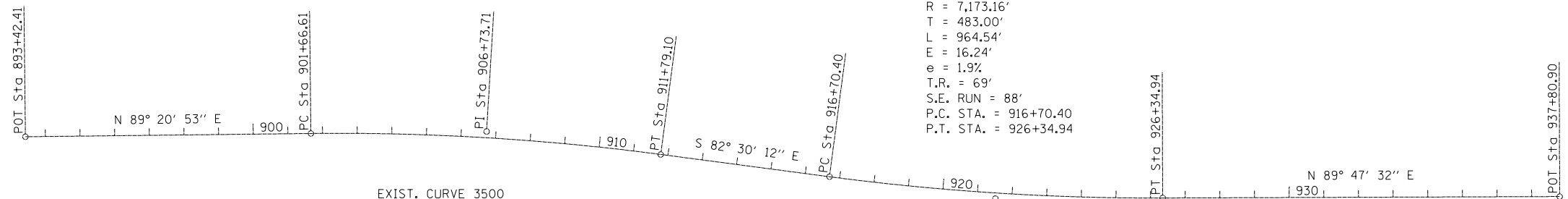
TRAVERSE POINT 200502

#4 REBAR
 STA 925+31.1, 23.7' RT
 N 891985.8500
 E 2336128.4720
 EL 625.893



POT 512

PK NAIL IN CHISELED "X"
 STA 937+80.903
 N 892013.3320
 E 2337378.4910



EXIST. CURVE 3501
 PI STA. = 921+53.40
 $\Delta = 7^\circ 42' 16''$ (LT)
 D = $0^\circ 47' 56''$
 R = 7,173.16'
 T = 483.00'
 L = 964.54'
 E = 16.24'
 e = 1.9%
 T.R. = 69'
 S.E. RUN = 88'
 P.C. STA. = 916+70.40
 P.T. STA. = 926+34.94

EXIST. CURVE 3500
 PI STA. = 906+73.71
 $\Delta = 8^\circ 08' 54''$ (RT)
 D = $0^\circ 48' 17''$
 R = 7,119.39'
 T = 507.10'
 L = 1,012.49'
 E = 18.04'
 e = 1.9%
 T.R. = 60'
 S.E. RUN = 88'
 P.C. STA. = 901+66.61
 P.T. STA. = 911+79.10

BENCHMARK 208A

EL 620.248 "NAVD 88"
 CHISELED "□" IN TOP OF SOUTH HEADWALL, SET JUST EAST OF ST DENIS CEMETERY @ 0.6 MILE EAST OF RR VIADUCT IN SHIPMAN (FROM BOOK FA91; BK11)
 STA 904+62, 30' RT

BENCHMARK CB-1

EL 603.39 "NAVD 88"
 CHISELED "□" IN NWCORNER OF BRIDGE #059-0003; 0.79 MILE E OF RR OVERPASS IN SHIPMAN (FROM FA91; BK11)
 STA 914+68.70 15.25' LT

BENCHMARK 209

EL 626.980 "NAVD 88"
 CHISELED "□" SET IN WEST END OF SOUTH HEADWALL @ 1 MILE E OF RR OVERPASS IN SHIPMAN
 STA 925+55, 20.5' RT

FILE NAME =	USER NAME = sparksgw	DESIGNED -	REVISED -
ct:\pw\work\p\idot\sparksgw\10325252\d672\19-sht-016-atb.dgn		DRAWN - CFC	REVISED -
	PLOT SCALE = 400.000000' / in.	CHECKED - CCJ	REVISED -
CB PROJECT NO 10005-1	PLOT DATE = Oct-19-2012 02:14:00PM	DATE - / /	REVISED -

STATE OF ILLINOIS
 DEPARTMENT OF TRANSPORTATION

ALIGNMENT, TIES AND BENCHMARKS

SCALE: SHEET NO. OF SHEETS STA. TO STA.

CB Coombe-Bloxdorf P.C.
 - CIVIL ENGINEERS -
 - STRUCTURAL ENGINEERS -
 - LAND SURVEYORS -
 Design Firm License No. 184-002703

F.A.P. RTE.	SECTION	COUNTY	TOTAL SHEETS	SHEET NO.
325	116R-1	MACOUPIN	67	16
				CONTRACT NO. 72A19
ILLINOIS FED. AID PROJECT				