

STATE OF ILLINOIS
DEPARTMENT OF TRANSPORTATION
DIVISION OF HIGHWAYS

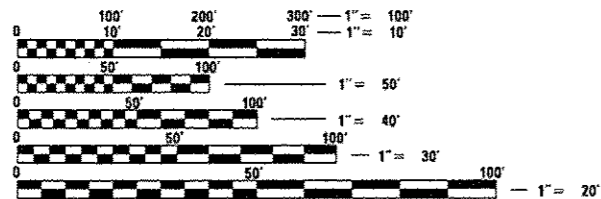
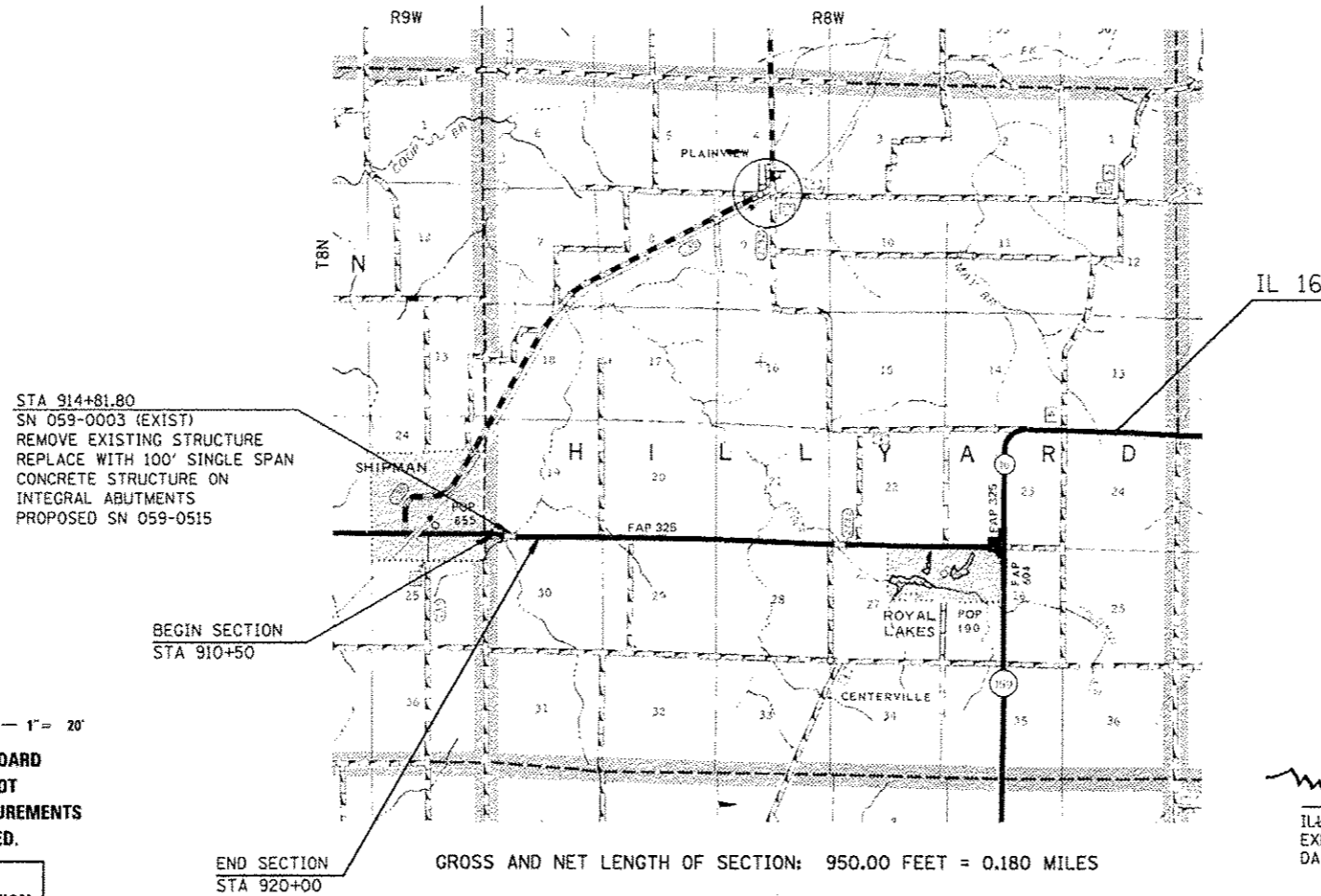
**PROPOSED
HIGHWAY PLANS**

FAP ROUTE 325 (IL 16)
SECTION 116BR-1
PROJECT ACF-0325(058)
MACOUPIN COUNTY
C-96-128-10
BRIDGE REPLACEMENT
IL 16 OVER COOP BRANCH 0.1 MILE E OF SHIPMAN

F.A.P. RTE.	SECTION	COUNTY	TOTAL SHEETS	SHEET NO.
325	116BR-1	MACOUPIN	67	1
FED. ROAD DIST. NO.		ILLINOIS	CONTRACT NO. 72A19	
D-96-505-06				

SEE SHEET NO. 2 FOR
INDEX OF SHEETS AND
LIST OF ILLINOIS DOT STANDARDS

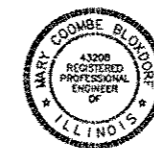
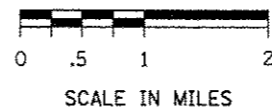
DESIGN DESIGNATION
OTHER PRINCIPAL ARTERIAL
ADT 2,650 (2011) 3,677 (2033)
PV=89.7% SU=4.4% MU=5.9%
DESIGN SPEED 60 MPH



FULL SIZE PLANS HAVE BEEN PREPARED USING STANDARD
ENGINEERING SCALES. REDUCED SIZED PLANS WILL NOT
CONFORM TO STANDARD SCALES. IN MAKING MEASUREMENTS
ON REDUCED PLANS, THE ABOVE SCALES MAY BE USED.

J.U.L.I.E.
JOINT UTILITY LOCATION INFORMATION FOR EXCAVATION
1-800-892-0123 OR 811

SENIOR TEAM LEADER - MARK DUST (217) 785-0597
TEAM LEADER - RENE CABRERA (217) 557-9062
CONTRACT NO. 72A19



Mark Coombe Bloxdorf
ILLINOIS PROFESSIONAL NO 43208
EXPIRES 11-30-13
DATE: 10-18-2012

CB Coombe-Bloxdorf P.C.
- CIVIL ENGINEERS -
- STRUCTURAL ENGINEERS -
- LAND SURVEYORS -
Design Firm License No. 184-002703

STATE OF ILLINOIS
DEPARTMENT OF TRANSPORTATION
DIVISION OF HIGHWAYS

SUBMITTED *October 19, 2012*
Rogan L. Priskell
DEPUTY DIRECTOR OF HIGHWAYS, REGION ENGINEER

Dec 7 2012
John D. Baranzelli, P.E.
acting ENGINEER OF DESIGN AND ENVIRONMENT

Dec 7 2012
William B. Frey, Jr.
acting DIRECTOR OF HIGHWAYS, CHIEF ENGINEER

**PRINTED BY THE AUTHORITY
OF THE STATE OF ILLINOIS**