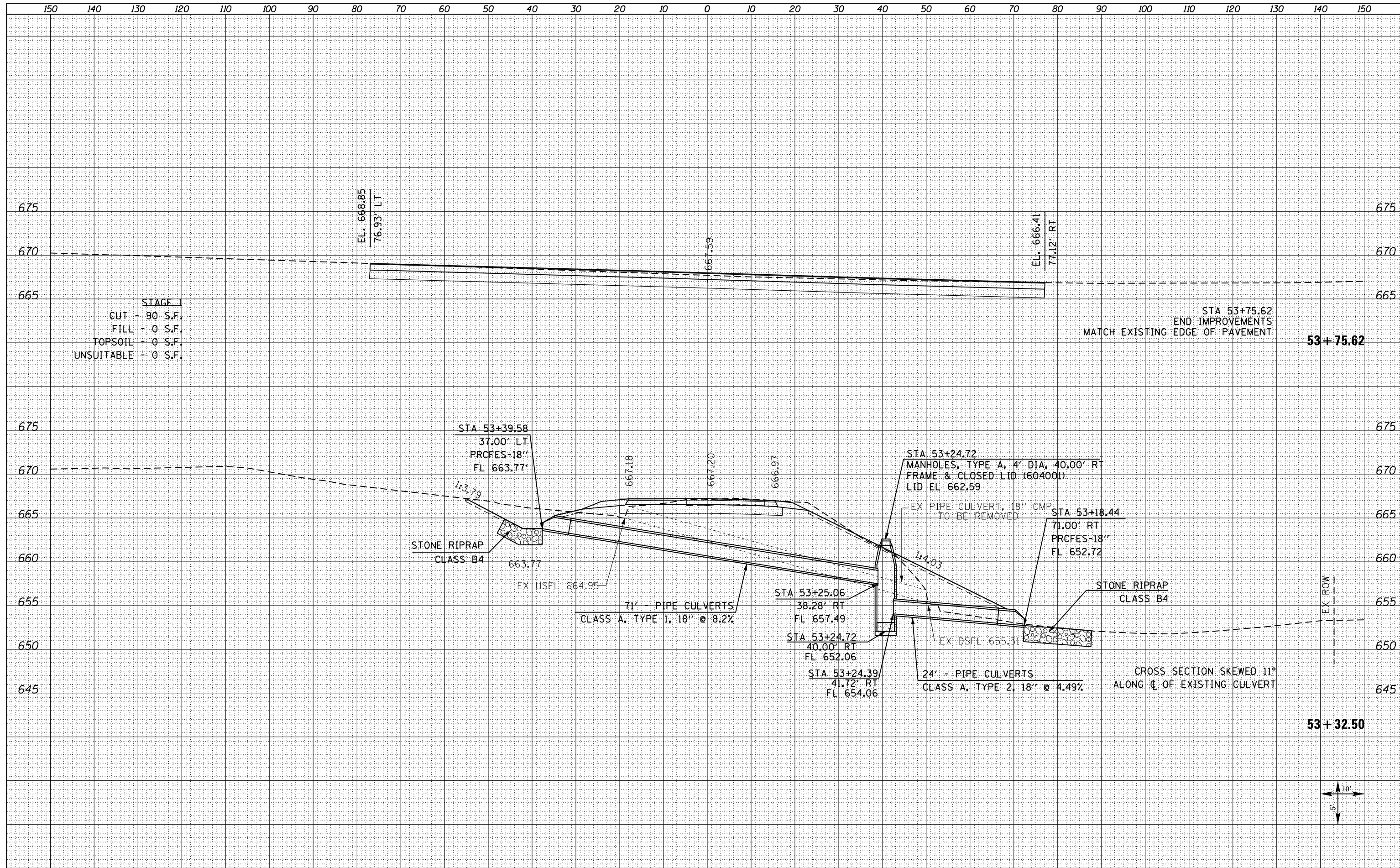


|                 |  |
|-----------------|--|
| DATE            |  |
| BY              |  |
| FINISHED SURVEY |  |
| PLOTTED         |  |
| TEMPLATE        |  |
| NOTE BOOK       |  |
| AREAS CHECKED   |  |
| NO.             |  |

|                 |  |
|-----------------|--|
| DATE            |  |
| BY              |  |
| ORIGINAL SURVEY |  |
| PLOTTED         |  |
| TEMPLATE        |  |
| NOTE BOOK       |  |
| AREAS CHECKED   |  |
| NO.             |  |



STAGE I  
 CUT - 90 S.F.  
 FILL - 0 S.F.  
 TOPSOIL - 0 S.F.  
 UNSUITABLE - 0 S.F.

STA 53+75.62  
 END IMPROVEMENTS  
 MATCH EXISTING EDGE OF PAVEMENT  
**53 + 75.62**

STA 53+39.58  
 37.00' LT  
 PRCFES-18"  
 FL 663.77'  
 1:3.79  
 STONE RIPRAP  
 CLASS B4  
 663.77  
 EX USFL 664.95

71' PIPE CULVERTS  
 CLASS A, TYPE 1, 18" @ 8.2%

STA 53+25.06  
 38.28' RT  
 FL 657.49  
 STA 53+24.72  
 40.00' RT  
 FL 652.06  
 STA 53+24.39  
 41.72' RT  
 FL 654.06

STA 53+24.72  
 MANHOLES, TYPE A, 4' DIA, 40.00' RT  
 FRAME & CLOSED LID (60400)  
 LID EL 662.59  
 EX PIPE CULVERT, 18" CMP  
 TO BE REMOVED

STA 53+18.44  
 71.00' RT  
 PRCFES-18"  
 FL 652.72

STONE RIPRAP  
 CLASS B4

24' PIPE CULVERTS  
 CLASS A, TYPE 2, 18" @ 4.49%

CROSS SECTION SKEWED 11°  
 ALONG C OF EXISTING CULVERT

**53 + 32.50**



|  |                   |                |            |   |   |                          |                                |                    |                   |                  |                  |               |
|--|-------------------|----------------|------------|---|---|--------------------------|--------------------------------|--------------------|-------------------|------------------|------------------|---------------|
| FILE NAME =<br>D468409-SHT-XSSHT-TR178-1800E.dgn | USER NAME = zechl | DESIGNED - DBS | REVISIED - | <b>STATE OF ILLINOIS<br/>DEPARTMENT OF TRANSPORTATION</b> | <b>CROSS SECTIONS<br/>TR 178 (1800 E)</b> |                          |                                | F.A.P. RTE. 313    | SECTION 7-2 ; 6-1 | COUNTY HENDERSON | TOTAL SHEETS 976 | SHEET NO. 970 |
| PLOT SCALE = 20.0000' / in.                      | CHECKED - CSB     | REVISIED -     | REVISIED - |   | SCALE: NOTED                              | SHEET NO. 9 OF 10 SHEETS | STA. 53+32.50 TO STA. 53+75.62 | CONTRACT NO. 68409 |                   |                  |                  |               |
| PLOT DATE = 10/16/2012                           | DATE - 10/2012    | REVISIED -     | REVISIED - |   | ILLINOIS FED. AID PROJECT                 |                          |                                |                    |                   |                  |                  |               |
|  |                   |                |            |   |   |                          |                                |                    |                   |                  |                  |               |