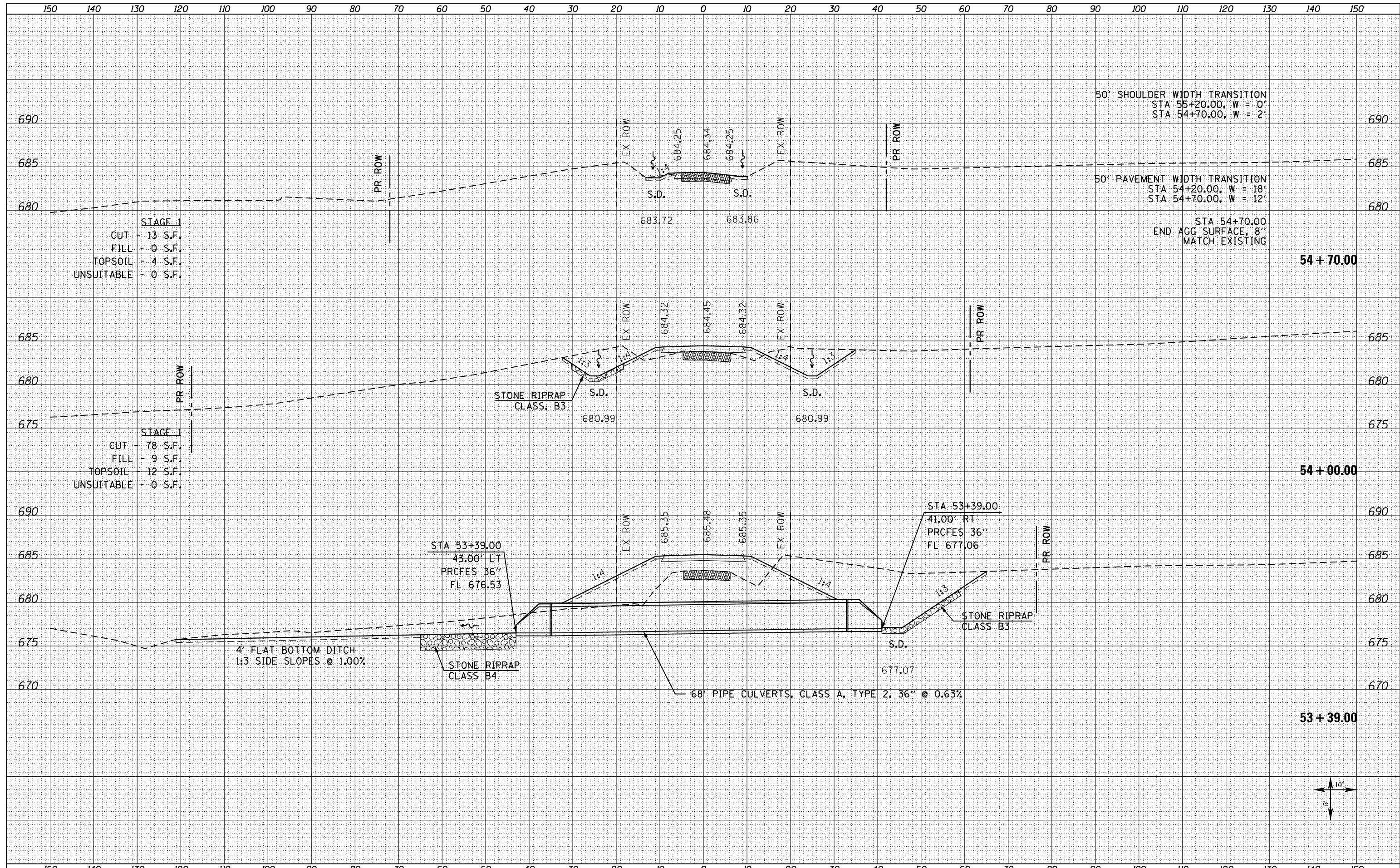


DATE	
BY	
FINISHED	
NO.	
DATE	
BY	
FINISHED	
NO.	
DATE	
BY	
FINISHED	
NO.	

DATE	
BY	
FINISHED	
NO.	
DATE	
BY	
FINISHED	
NO.	
DATE	
BY	
FINISHED	
NO.	



50' SHOULDER WIDTH TRANSITION
 STA 55+20.00, W = 0'
 STA 54+70.00, W = 2'

50' PAVEMENT WIDTH TRANSITION
 STA 54+20.00, W = 18'
 STA 54+70.00, W = 12'

STA 54+70.00
 END AGG SURFACE, 8"
 MATCH EXISTING

54 + 70.00

54 + 00.00

53 + 39.00



FILE NAME = D468409-SHT-XSSHT-TR138-1650E-D.dgn	USER NAME = zechl	DESIGNED - DBS	REVISIED -	STATE OF ILLINOIS DEPARTMENT OF TRANSPORTATION	CROSS SECTIONS TR 138 (1650E)			F.A.P. RTE. 313	SECTION 7-2 ; 6-1	COUNTY HENDERSON	TOTAL SHEETS 976	SHEET NO. 938	
	PLOT SCALE = 20.0000' / in.	CHECKED - CSB	REVISIED -		SCALE: NOTED	SHEET NO. 5 OF 6 SHEETS	STA. 53+39.00 TO STA. 54+70.00	CONTRACT NO. 68409					
	PLOT DATE = 10/16/2012	DATE - 10/2012	REVISIED -		ILLINOIS FED. AID PROJECT								