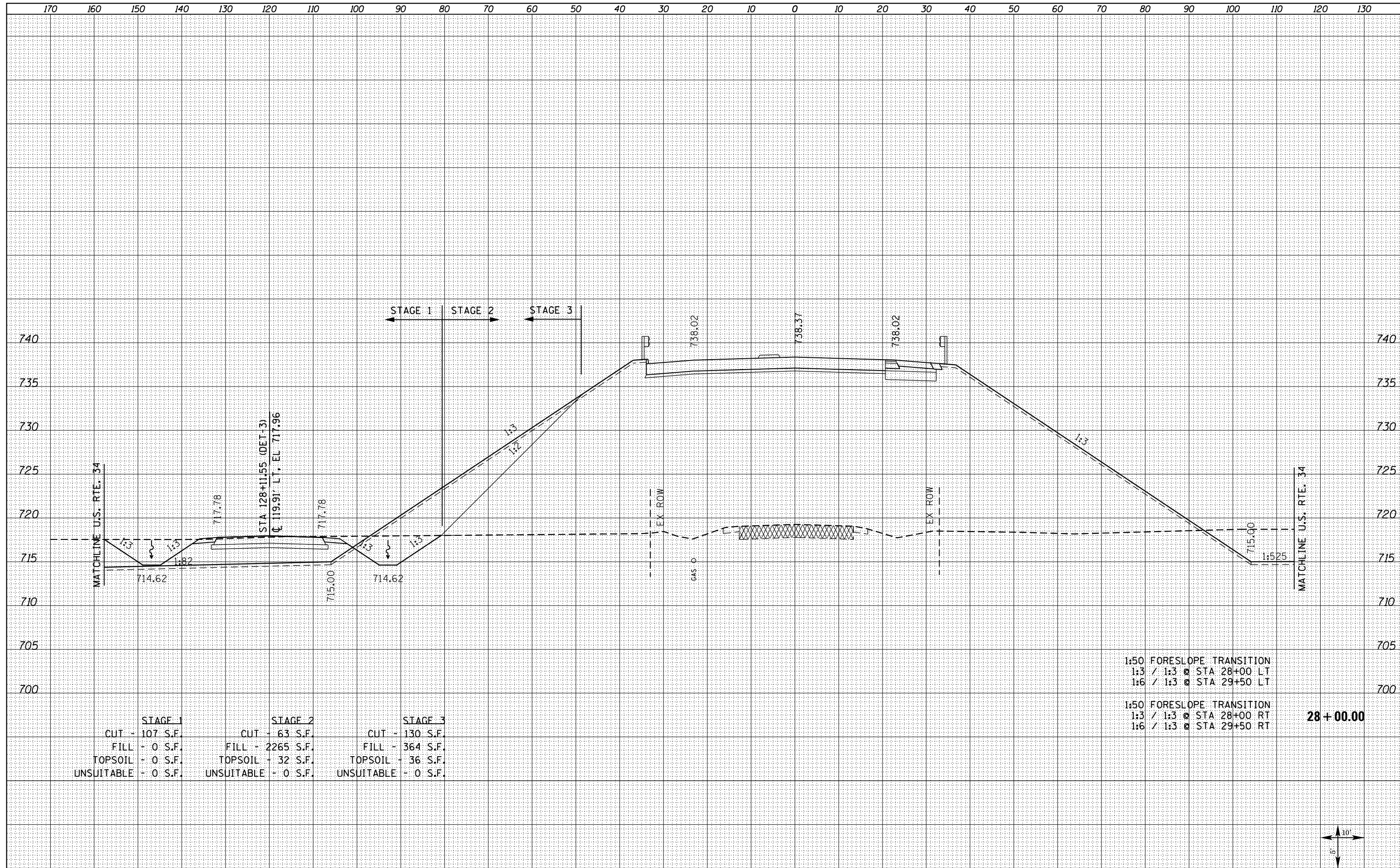


DATE	
BY	
FINISHED	
PLOTTED	
TEMPLATE	
NOTE BOOK	
AREAS CHECKED	
NO.	

DATE	
BY	
ORIGINAL SURVEY	
PLOTTED	
TEMPLATE	
NOTE BOOK	
AREAS CHECKED	
NO.	



	STAGE 1	STAGE 2	STAGE 3
CUT	- 107 S.F.	- 63 S.F.	- 130 S.F.
FILL	- 0 S.F.	- 2265 S.F.	- 364 S.F.
TOPSOIL	- 0 S.F.	- 32 S.F.	- 36 S.F.
UNSUITABLE	- 0 S.F.	- 0 S.F.	- 0 S.F.

1:50 FORESLOPE TRANSITION
 1:3 / 1:3 @ STA 28+00 LT
 1:6 / 1:3 @ STA 29+50 LT

1:50 FORESLOPE TRANSITION
 1:3 / 1:3 @ STA 28+00 RT
 1:6 / 1:3 @ STA 29+50 RT

28 + 00.00

FILE NAME = D468409-SHT-XSHT-IL 94-1500E.dgn

USER NAME = zachl	DESIGNED - DBS	REVISED -
	DRAWN - PSBA	REVISED -
PLOT SCALE = 20.0000' / in.	CHECKED - CSB	REVISED -
PLOT DATE = 10/16/2012	DATE - 10/2012	REVISED -

**STATE OF ILLINOIS
 DEPARTMENT OF TRANSPORTATION**

**CROSS SECTIONS
 IL ROUTE 94 /116**

SCALE: NOTED SHEET NO. 22 OF 33 SHEETS STA. 28+00.00 TO STA. 28+00.00

F.A.P. RTE.	SECTION	COUNTY	TOTAL SHEETS	SHEET NO.
313	7-2 ; 6-1	HENDERSON	976	850
				CONTRACT NO. 68409

ILLINOIS FED. AID PROJECT