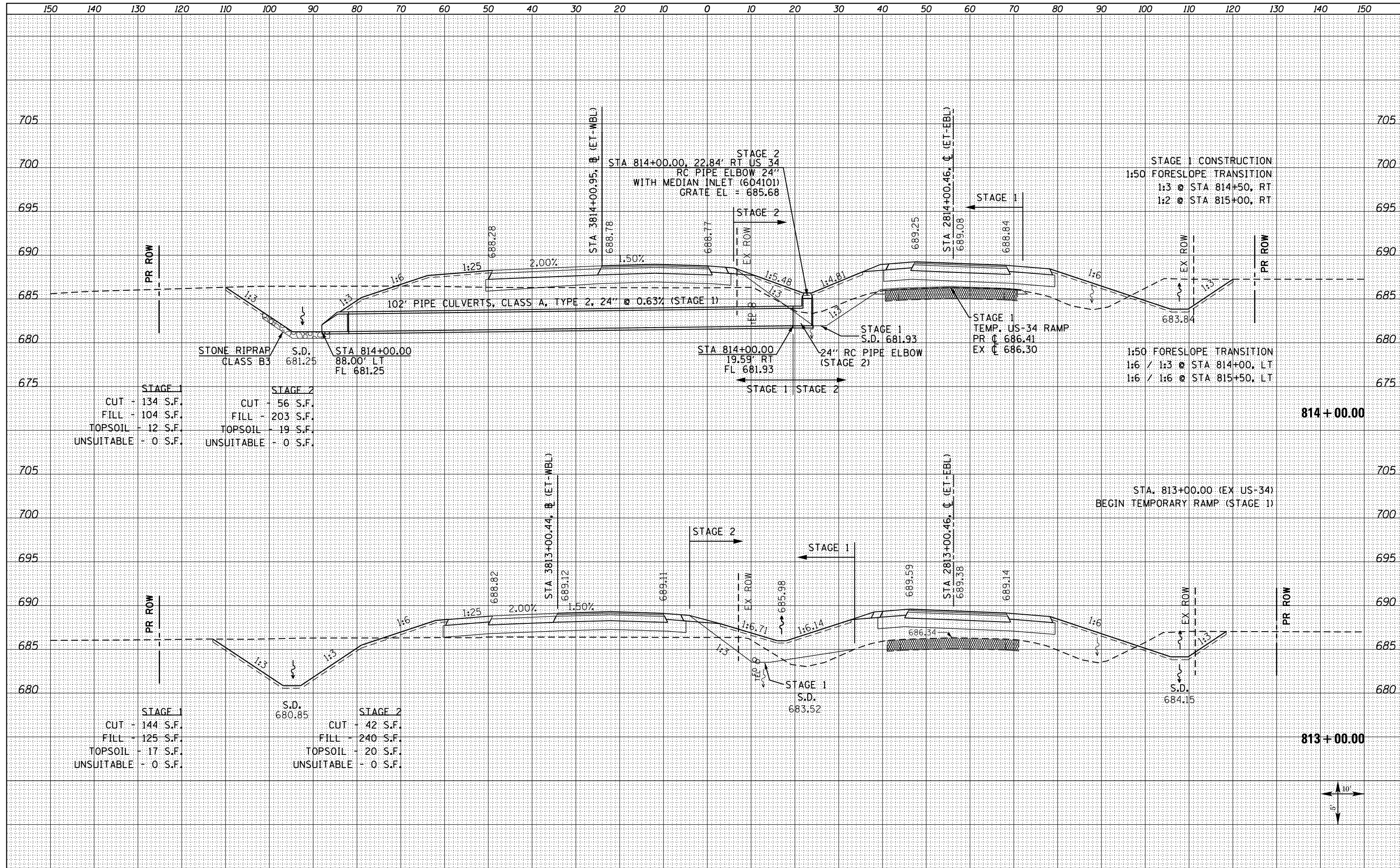


| | |
|---------------|--|
| DATE | |
| BY | |
| SURVEYED | |
| PLOTTED | |
| TEMPLATE | |
| NOTE BOOK | |
| AREAS CHECKED | |
| NO. | |

| | |
|---------------|--|
| DATE | |
| BY | |
| SURVEYED | |
| PLOTTED | |
| TEMPLATE | |
| NOTE BOOK | |
| AREAS CHECKED | |
| NO. | |



FILE NAME = D468409-SHT-XSHT-US34-C.dgn

| | | |
|-----------------------------|----------------|-----------|
| USER NAME = zechl | DESIGNED - DBS | REVISED - |
| | DRAWN - PSBA | REVISED - |
| PLOT SCALE = 20.0000' / in. | CHECKED - CSB | REVISED - |
| PLOT DATE = 10/16/2012 | DATE - 10/2012 | REVISED - |

**STATE OF ILLINOIS
DEPARTMENT OF TRANSPORTATION**

**CROSS SECTIONS
US ROUTE 34**

SCALE: NOTED SHEET NO. 200 OF 209 SHEETS STA. 813+00.00 TO STA. 814+00.00

| | | | | |
|---------------------------|-----------|-----------|--------------|--------------------|
| F.A.P. RTE. | SECTION | COUNTY | TOTAL SHEETS | SHEET NO. |
| 313 | 7-2 ; 6-1 | HENDERSON | 976 | 819 |
| | | | | CONTRACT NO. 68409 |
| ILLINOIS FED. AID PROJECT | | | | |

