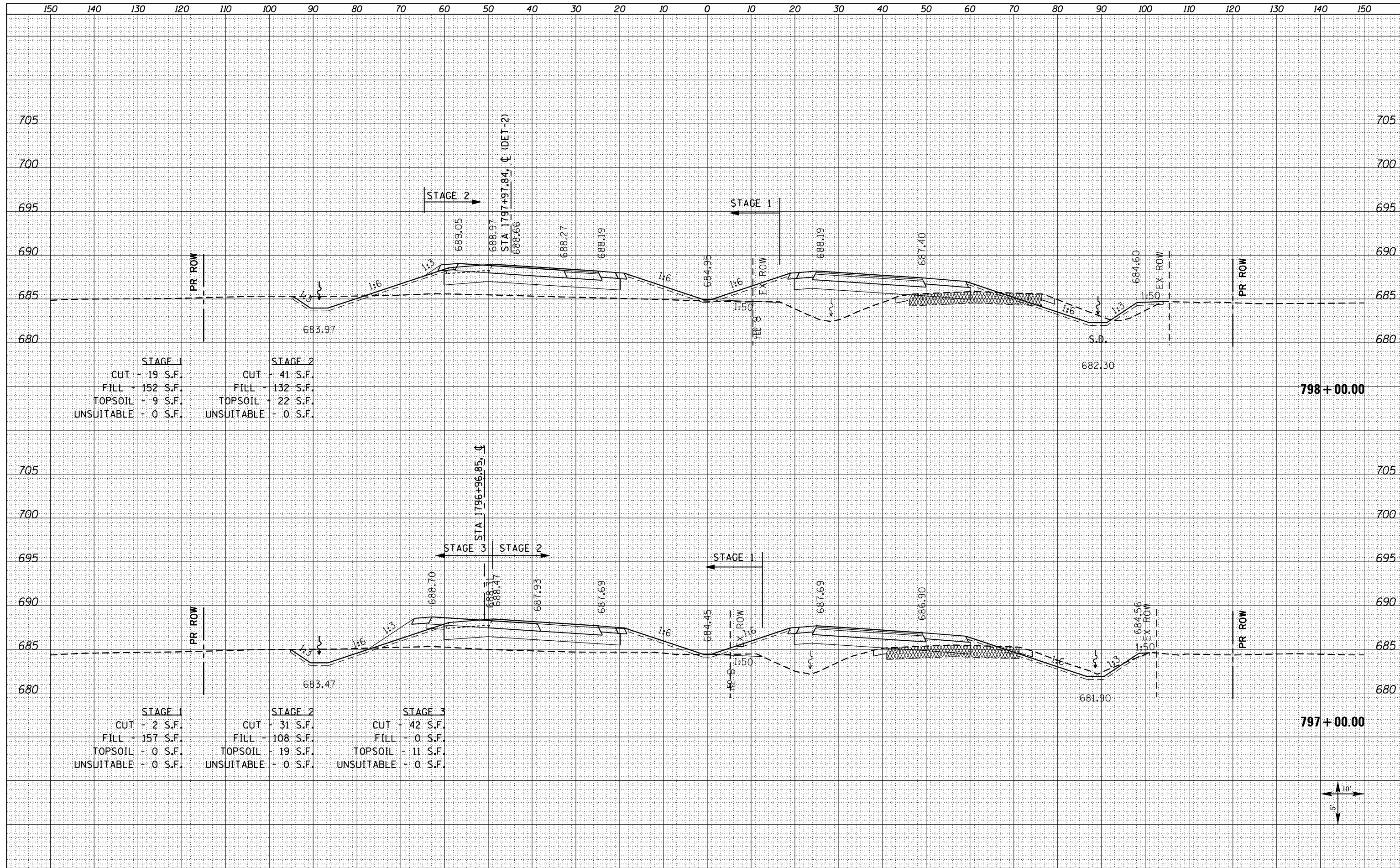


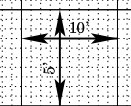
BY	DATE
SURVEYED	
PLOTTED	
TEMPLATE	
AREAS CHECKED	
NO.	

BY	DATE
SURVEYED	
PLOTTED	
TEMPLATE	
AREAS CHECKED	
NO.	



STAGE 1		STAGE 2	
CUT	- 19 S.F.	CUT	- 41 S.F.
FILL	- 152 S.F.	FILL	- 132 S.F.
TOPSOIL	- 9 S.F.	TOPSOIL	- 22 S.F.
UNSUITABLE	- 0 S.F.	UNSUITABLE	- 0 S.F.

STAGE 1		STAGE 2		STAGE 3	
CUT	- 2 S.F.	CUT	- 31 S.F.	CUT	- 42 S.F.
FILL	- 157 S.F.	FILL	- 108 S.F.	FILL	- 0 S.F.
TOPSOIL	- 0 S.F.	TOPSOIL	- 19 S.F.	TOPSOIL	- 11 S.F.
UNSUITABLE	- 0 S.F.	UNSUITABLE	- 0 S.F.	UNSUITABLE	- 0 S.F.



FILE NAME = D468409-SHT-XSHT-US34-C.dgn

USER NAME = zechl	DESIGNED - DBS	REVISED -
	DRAWN - PSBA	REVISED -
PLOT SCALE = 20.0000' / in.	CHECKED - CSB	REVISED -
PLOT DATE = 10/16/2012	DATE - 10/2012	REVISED -

**STATE OF ILLINOIS
DEPARTMENT OF TRANSPORTATION**

**CROSS SECTIONS
US ROUTE 34**

SCALE: NOTED SHEET NO. 185 OF 209 SHEETS STA. 797+00.00 TO STA. 798+00.00

F.A.P. RTE.	SECTION	COUNTY	TOTAL SHEETS	SHEET NO.
313	7-2 ; 6-1	HENDERSON	976	804
CONTRACT NO. 68409				

ILLINOIS FED. AID PROJECT