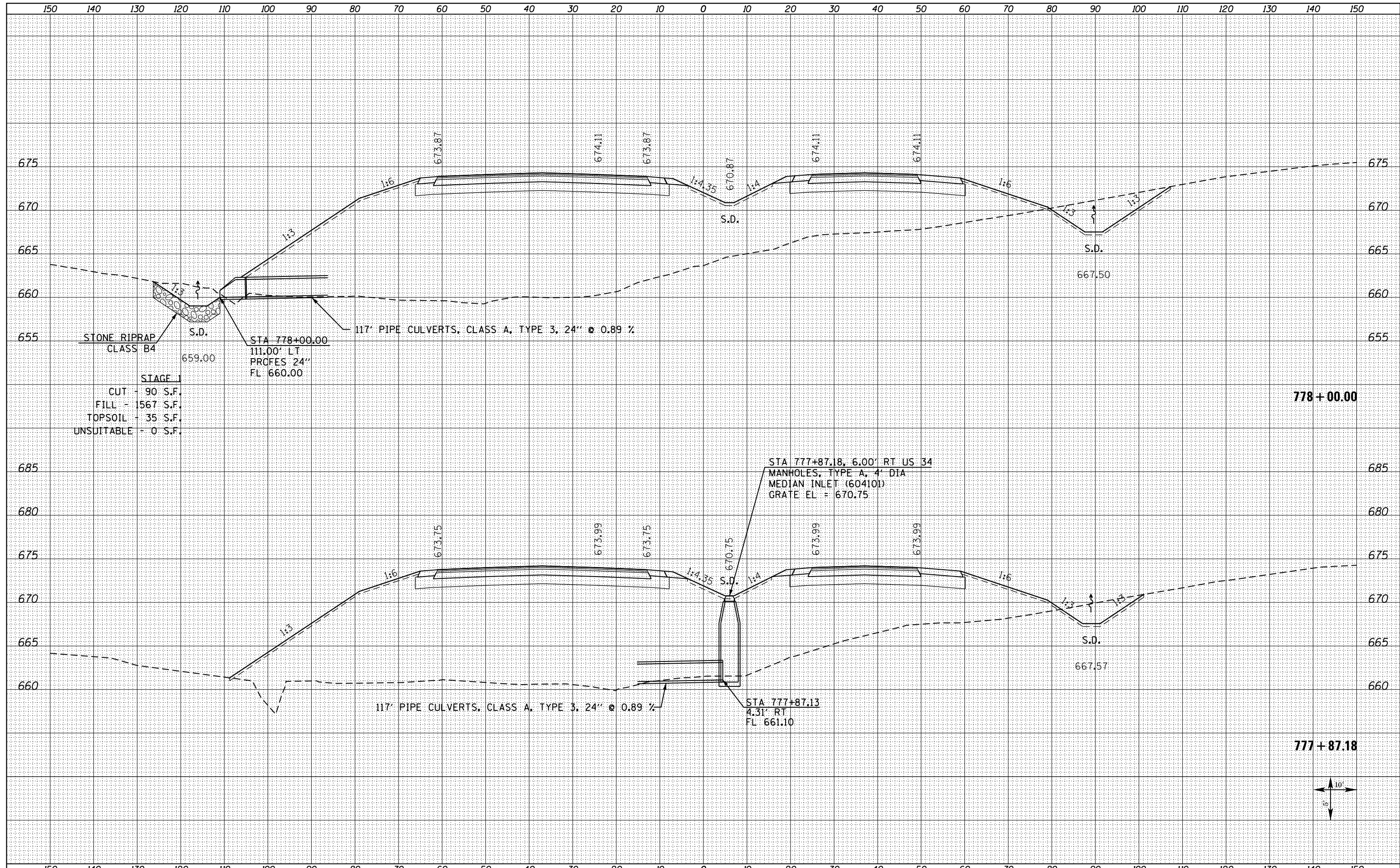


BY	DATE
SURVEYED	
PLOTTED	
TEMPLATE	
AREAS CHECKED	
NO.	

BY	DATE
SURVEYED	
PLOTTED	
TEMPLATE	
AREAS CHECKED	
NO.	



STONE RIPRAP
CLASS B4

S.D.

659.00

STA 778+00.00
111.00' LT
PROFES 24"
FL 660.00

117' PIPE CULVERTS, CLASS A, TYPE 3, 24" @ 0.89 %

STAGE 1
CUT - 90 S.F.
FILL - 1567 S.F.
TOPSOIL - 35 S.F.
UNSUITABLE - 0 S.F.

STA 777+87.18, 6.00' RT US 34
MANHOLES, TYPE A, 4' DIA
MEDIAN INLET (604101)
GRATE EL = 670.75

117' PIPE CULVERTS, CLASS A, TYPE 3, 24" @ 0.89 %

STA 777+87.13
4.31' RT
FL 661.10

778+00.00

777+87.18



FILE NAME =
D468409-SHT-XSSHT-US34-C.dgn

USER NAME = zach1

PLOT SCALE = 20.0000' / in.

PLOT DATE = 10/16/2012

DESIGNED - DBS
DRAWN - PSBA
CHECKED - CSB
DATE - 10/2012

REVISED -
REVISED -
REVISED -
REVISED -

STATE OF ILLINOIS
DEPARTMENT OF TRANSPORTATION

CROSS SECTIONS
US ROUTE 34

SCALE: NOTED SHEET NO. 171 OF 209 SHEETS STA. 777+87.18 TO STA. 778+00.00

F.A.P. RTE.	SECTION	COUNTY	TOTAL SHEETS	SHEET NO.
313	7-2 ; 6-1	HENDERSON	976	779
CONTRACT NO. 68409				

ILLINOIS FED. AID PROJECT