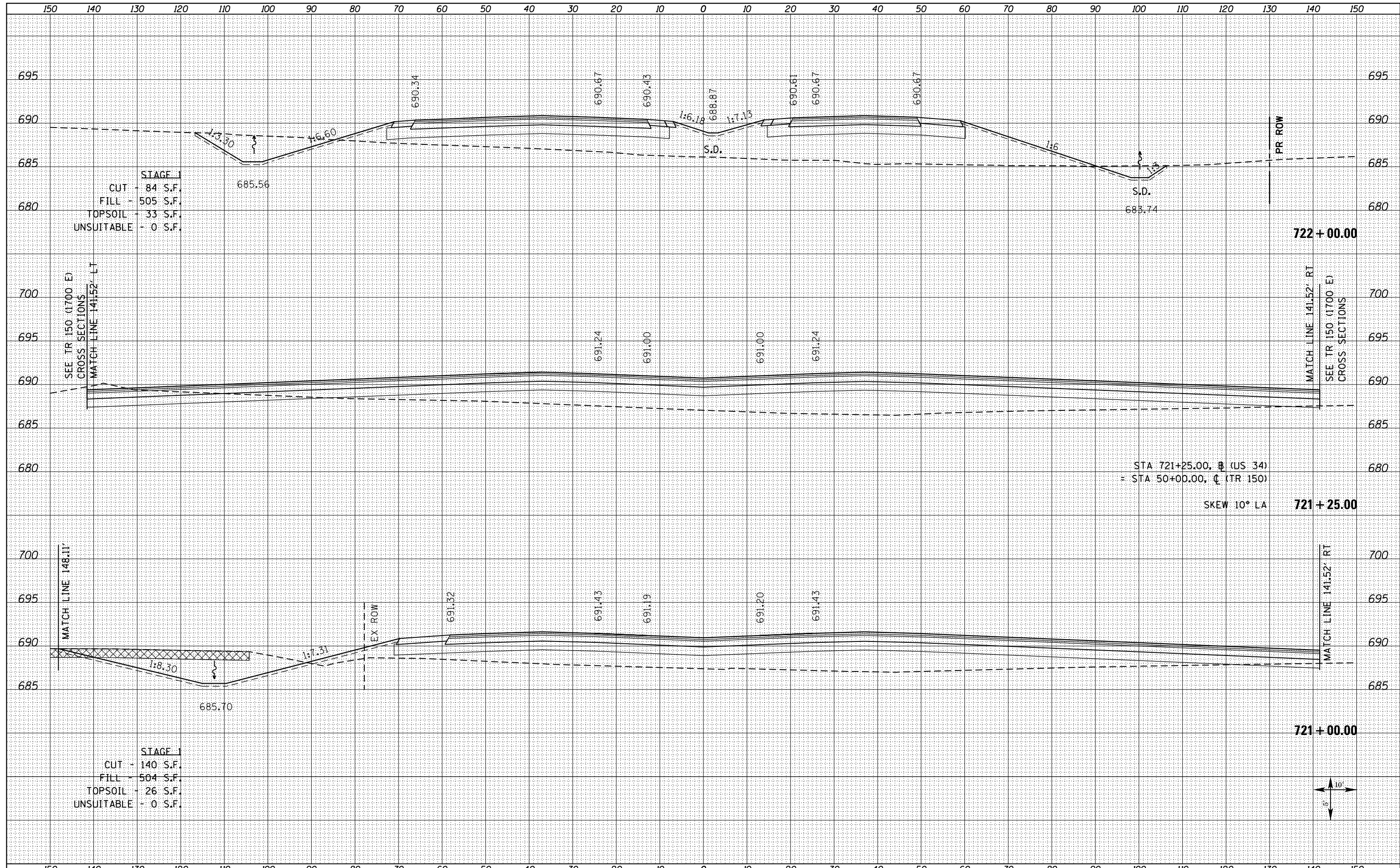


DATE	
BY	
FINAL SURVEY	SURVEYED
NOTE BOOK	PLOTTED
NO.	TEMPLATE
	AREAS CHECKED

DATE	
BY	
ORIGINAL SURVEY	SURVEYED
NOTE BOOK	PLOTTED
NO.	TEMPLATE
	AREAS CHECKED



STAGE 1  
 CUT - 84 S.F.  
 FILL - 505 S.F.  
 TOPSOIL - 33 S.F.  
 UNSUITABLE - 0 S.F.

STAGE 1  
 CUT - 140 S.F.  
 FILL - 504 S.F.  
 TOPSOIL - 26 S.F.  
 UNSUITABLE - 0 S.F.

STA 721+25.00, # (US 34)  
 = STA 50+00.00, # (TR 150)  
 SKEW 10° LA

FILE NAME = D468409-SHT-XSHT-US34-B.dgn	USER NAME = danw	DESIGNED - DBS	REVISED -	<b>STATE OF ILLINOIS</b> <b>DEPARTMENT OF TRANSPORTATION</b>	<b>CROSS SECTIONS</b>			F.A.P. RTE. 313	SECTION 7-2 ; 6-1	COUNTY HENDERSON	TOTAL SHEETS 976	SHEET NO. 716
		DRAWN - PSBA	REVISED -		<b>US ROUTE 34</b>			CONTRACT NO. 68409		ILLINOIS FED. AID PROJECT		
PLOT SCALE = 20.0000' / in.		CHECKED - CSB	REVISED -		SCALE: NOTED	SHEET NO. 129 OF 209 SHEETS	STA. 721+00.00 TO STA. 722+00.00					
PLOT DATE = 10/16/2012		DATE - 10/2012	REVISED -									