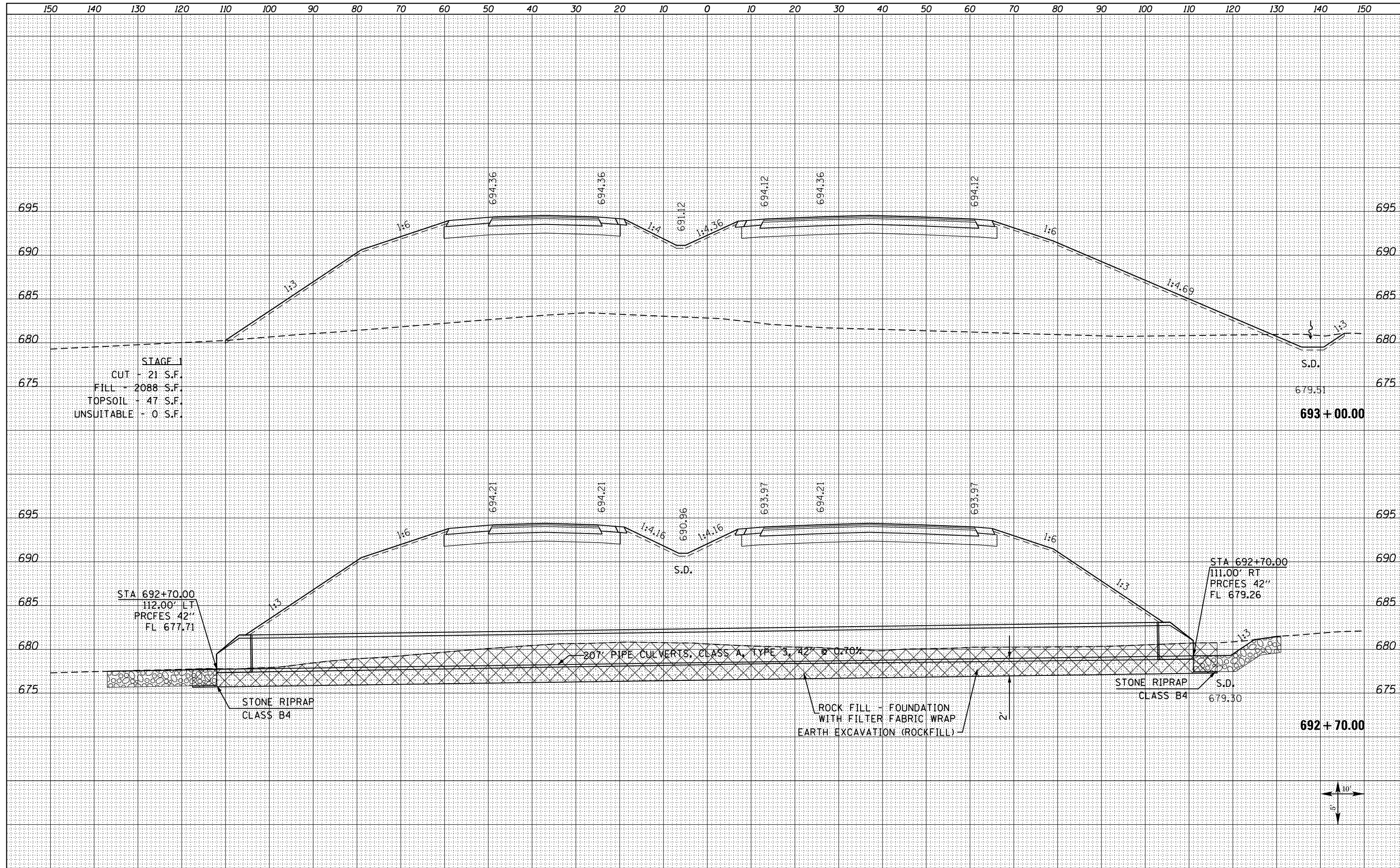


BY	DATE
SURVEYED	
PLOTTED	
TEMPLATE	
AREAS CHECKED	
FINAL SURVEY	
NOTE BOOK	
NO.	

BY	DATE
SURVEYED	
PLOTTED	
TEMPLATE	
AREAS CHECKED	
ORIGINAL SURVEY	
NOTE BOOK	
NO.	



STAGE 1
 CUT - 21 S.F.
 FILL - 2088 S.F.
 TOPSOIL - 47 S.F.
 UNSUITABLE - 0 S.F.

STA 692+70.00
 112.00' LT
 PRCFES 42"
 FL 677.71

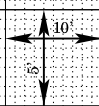
STA 692+70.00
 111.00' RT
 PRCFES 42"
 FL 679.26

207" PIPE CULVERTS, CLASS A, TYPE 3, 42" @ 0.70%

STONE RIPRAP
 CLASS B4

ROCK FILL - FOUNDATION
 WITH FILTER FABRIC WRAP
 EARTH EXCAVATION (ROCKFILL)

STONE RIPRAP
 CLASS B4



FILE NAME = D468409-SHT-XSSHT-US34-B.dgn

USER NAME = danw	DESIGNED - DBS	REVISED -
	DRAWN - PSBA	REVISED -
PLOT SCALE = 20.0000' / in.	CHECKED - CSB	REVISED -
PLOT DATE = 10/16/2012	DATE - 10/2012	REVISED -

STATE OF ILLINOIS
 DEPARTMENT OF TRANSPORTATION

CROSS SECTIONS
 US ROUTE 34

SCALE: NOTED SHEET NO. 111 OF 209 SHEETS STA. 692+70.00 TO STA. 693+00.00

F.A.P. RTE.	SECTION	COUNTY	TOTAL SHEETS	SHEET NO.
313	7-2 ; 6-1	HENDERSON	976	698
				CONTRACT NO. 68409
ILLINOIS FED. AID PROJECT				