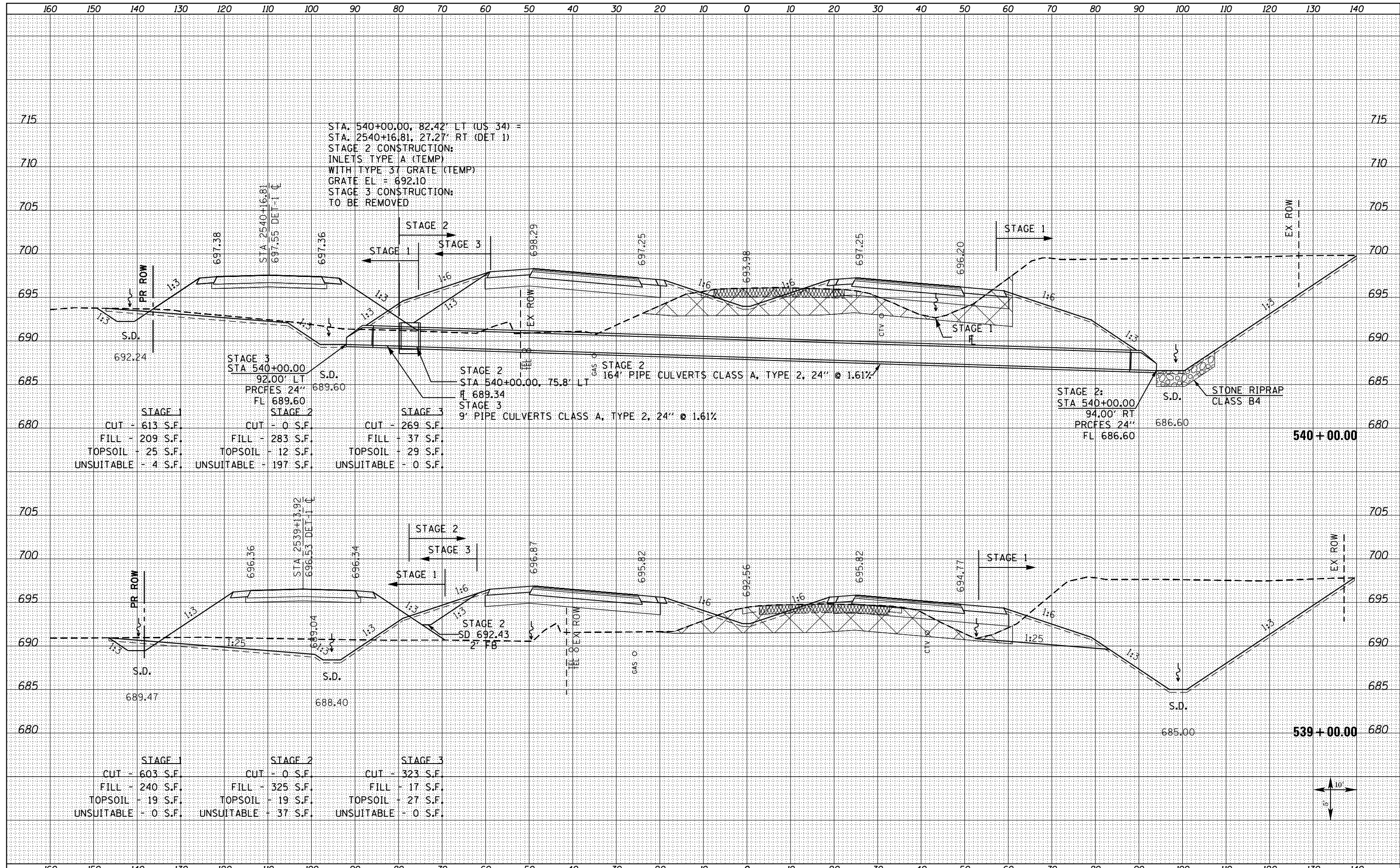


DATE	
BY	
FINISHED SURVEY	
PLOTTED	
TEMPLATE	
NOTE BOOK	
AREAS CHECKED	
NO.	

DATE	
BY	
ORIGINAL SURVEY	
PLOTTED	
TEMPLATE	
NOTE BOOK	
AREAS CHECKED	
NO.	



STA. 540+00.00, 82.42' LT (US 34) =
 STA. 2540+16.81, 27.27' RT (DET 1)
 STAGE 2 CONSTRUCTION:
 INLETS TYPE A (TEMP)
 WITH TYPE 37 GRATE (TEMP)
 GRATE EL = 692.10
 STAGE 3 CONSTRUCTION:
 TO BE REMOVED

STAGE 1			STAGE 2			STAGE 3		
CUT	- 613 S.F.		CUT	- 0 S.F.		CUT	- 269 S.F.	
FILL	- 209 S.F.		FILL	- 283 S.F.		FILL	- 37 S.F.	
TOPSOIL	- 25 S.F.		TOPSOIL	- 12 S.F.		TOPSOIL	- 29 S.F.	
UNSUITABLE	- 4 S.F.		UNSUITABLE	- 197 S.F.		UNSUITABLE	- 0 S.F.	

STAGE 1			STAGE 2			STAGE 3		
CUT	- 603 S.F.		CUT	- 0 S.F.		CUT	- 323 S.F.	
FILL	- 240 S.F.		FILL	- 325 S.F.		FILL	- 17 S.F.	
TOPSOIL	- 19 S.F.		TOPSOIL	- 19 S.F.		TOPSOIL	- 27 S.F.	
UNSUITABLE	- 0 S.F.		UNSUITABLE	- 37 S.F.		UNSUITABLE	- 0 S.F.	

FILE NAME = D468409-SHT-XSSHT-US34-A.dgn

USER NAME = danw	DESIGNED -	REVISED -
	DRAWN -	REVISED -
PLOT SCALE = 20.0000' / in.	CHECKED -	REVISED -
PLOT DATE = 10/16/2012	DATE -	REVISED -

STATE OF ILLINOIS
 DEPARTMENT OF TRANSPORTATION

CROSS SECTIONS
 US ROUTE 34

SCALE: NOTED SHEET NO. 30 OF 209 SHEETS STA. 539+00.00 TO STA. 540+00.00

F.A.P. RTE.	SECTION	COUNTY	TOTAL SHEETS	SHEET NO.
313	7-2 ; 6-1	HENDERSON	976	605
				CONTRACT NO. 68409

ILLINOIS FED. AID PROJECT