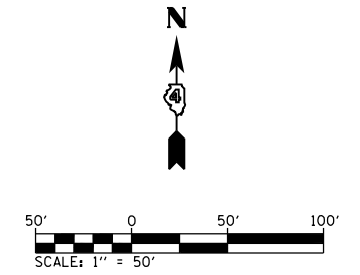


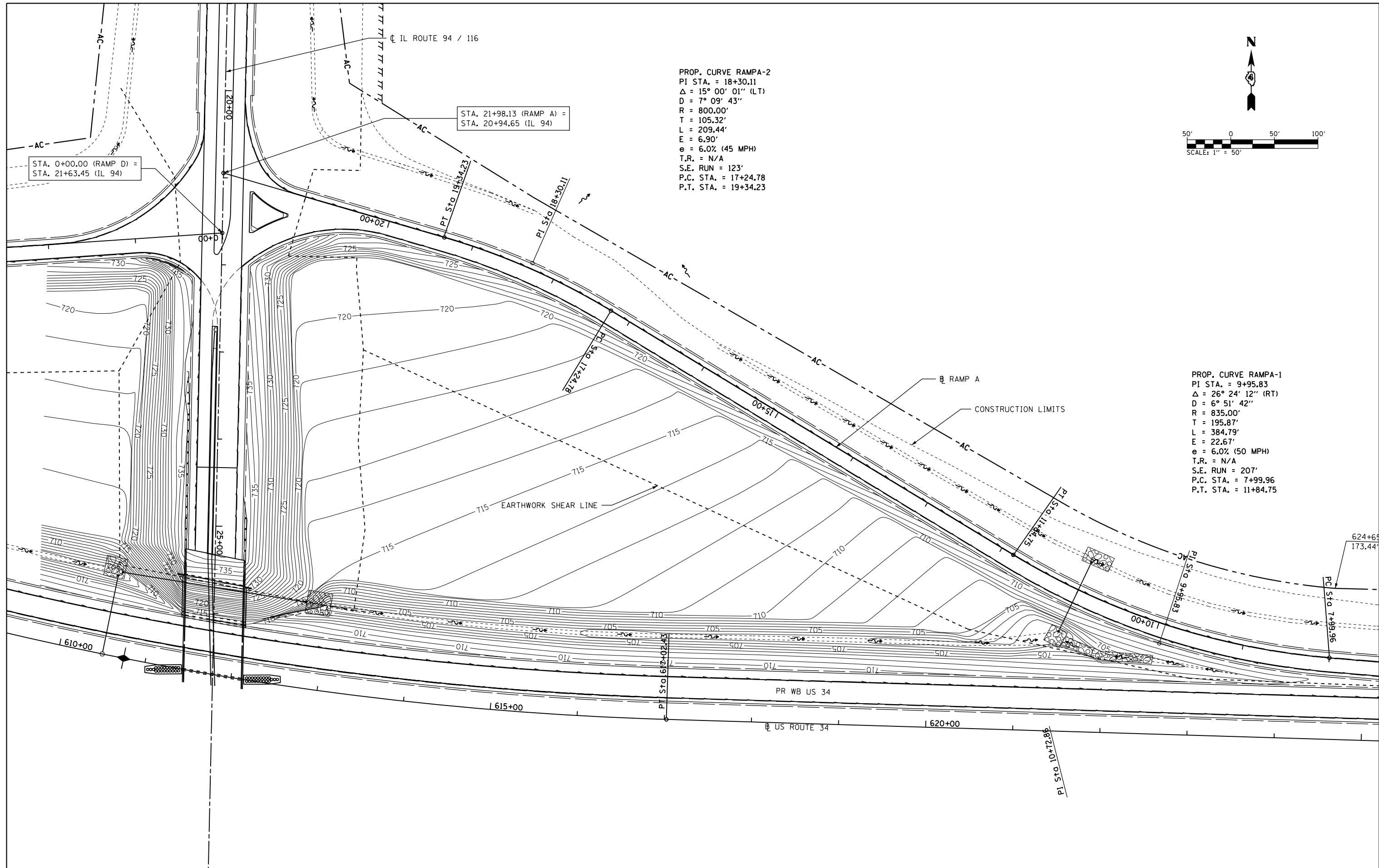
PROP. CURVE RAMPA-2  
 PI STA. = 18+30.11  
 $\Delta$  = 15° 00' 01" (LT)  
 D = 7° 09' 43"  
 R = 800.00'  
 T = 105.32'  
 L = 209.44'  
 E = 6.90'  
 e = 6.0% (45 MPH)  
 T.R. = N/A  
 S.E. RUN = 123'  
 P.C. STA. = 17+24.78  
 P.T. STA. = 19+34.23



STA. 21+98.13 (RAMP A) =  
 STA. 20+94.65 (IL 94)

STA. 0+00.00 (RAMP D) =  
 STA. 21+63.45 (IL 94)

PROP. CURVE RAMPA-1  
 PI STA. = 9+95.83  
 $\Delta$  = 26° 24' 12" (RT)  
 D = 6° 51' 42"  
 R = 835.00'  
 T = 195.87'  
 L = 384.79'  
 E = 22.67'  
 e = 6.0% (50 MPH)  
 T.R. = N/A  
 S.E. RUN = 207'  
 P.C. STA. = 7+99.96  
 P.T. STA. = 11+84.75



FILE NAME = D468409-SHT-03-DETAILS-IC-GRADING-RAMPA.dgn	USER NAME = zachl	DESIGNED - DBS	REVISED -
		DRAWN - PSBA	REVISED -
	PLOT SCALE = 100.0000' / in.	CHECKED - CSB	REVISED -
	PLOT DATE = 10/16/2012	DATE - 10/2012	REVISED -

**STATE OF ILLINOIS  
 DEPARTMENT OF TRANSPORTATION**

**SPECIAL DETAILS  
 INTERCHANGE GRADING PLANS (3 OF 4)**

F.A.P. RTE.	SECTION	COUNTY	TOTAL SHEETS	SHEET NO.
313	7-2; 6-1	HENDERSON	976	524
CONTRACT NO. 68409				

SCALE: 1" = 50' SHEET 3 OF 21 SHEETS STA. 611+79 LT TO STA. 625+00 LT

ILLINOIS FED. AID PROJECT