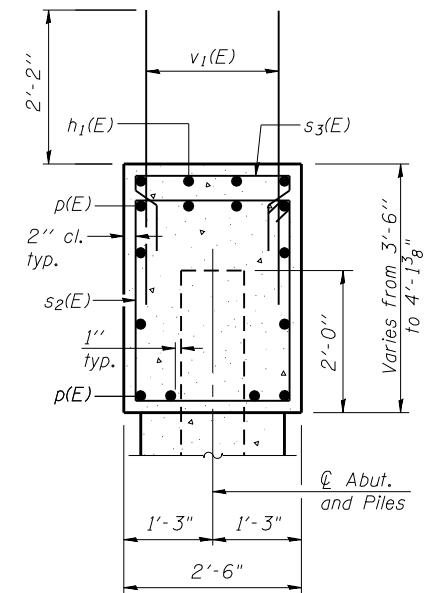
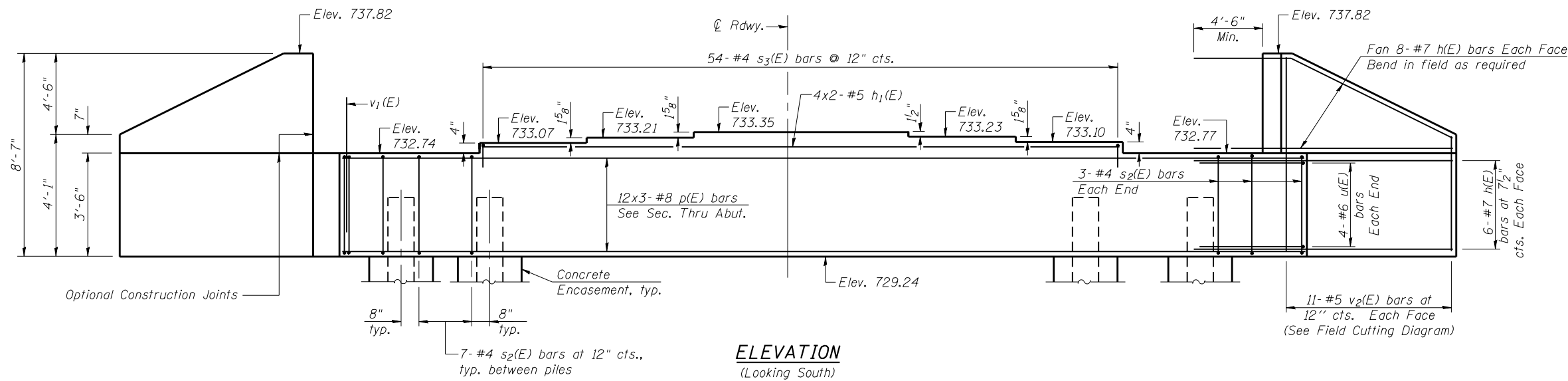
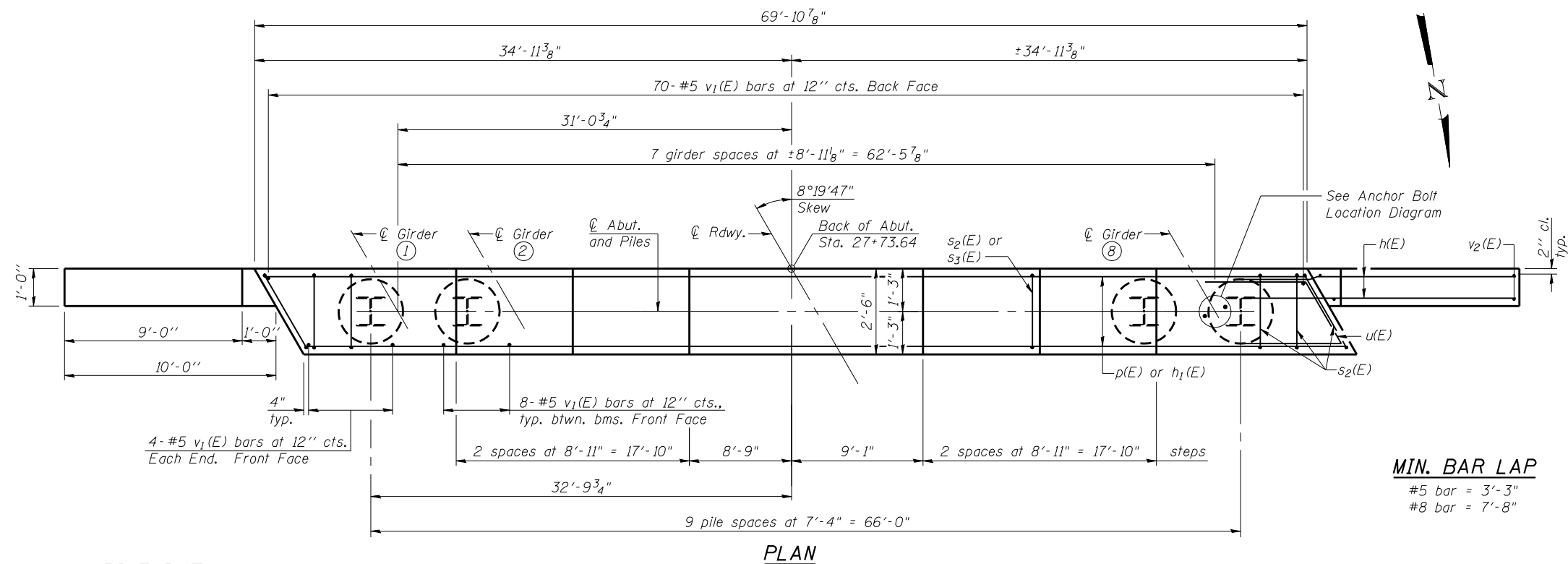


Notes:
Pour steps monolithically with cap.



SEC. THRU ABUT.

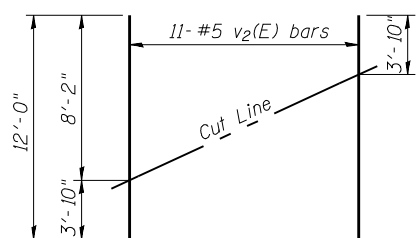


PLAN

PILE DATA

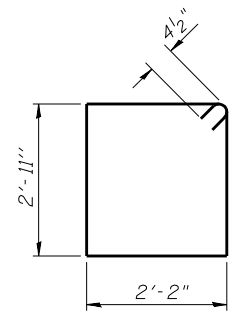
Type: Steel HP 14x89
Nominal Required Bearing: 705 kip
Factored Resistance Available: 388 kip
Est. Length: 91'
No. Production Piles: 10
No. Test Piles: Not required

Note:
Piles shall be driven thru 22" ϕ precored holes extending to elevation 703.2 according to Article 512.09c of the Standard Specifications. Cost included in driving piles.

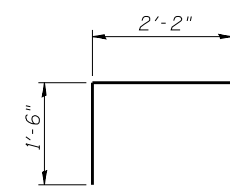


FIELD CUTTING DIAGRAM

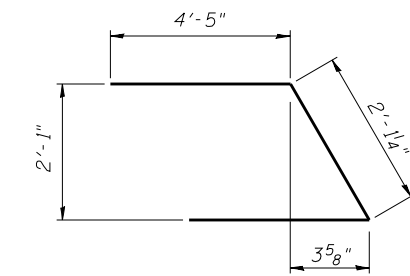
Order v2(E) full length. Cut as shown and use remainder of bars in opposite face.



BARS s2(E)



BARS s3(E)



BAR u(E)

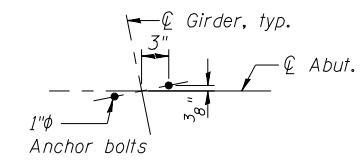
MIN. BAR LAP

#5 bar = 3'-3"
#8 bar = 7'-8"

BILL OF MATERIAL

Bar	No.	Size	Length	Shape	
h(E)	56	#7	14'-6"	—	
h1(E)	8	#5	28'-3"	—	
p(E)	36	#8	28'-3"	—	
s2(E)	69	#4	11'-5"	□	
s3(E)	54	#4	5'-2"	□	
u(E)	8	#6	11'-0"	┌	
v1(E)	134	#5	4'-4"	—	
v2(E)	22	#5	12'-0"	—	
Structure Excavation				Cu. Yd.	61
Concrete Structures				Cu. Yd.	29.9
Reinforcement Bars, Epoxy Coated				Pound	5,730
Furnishing Piles, HP 14x89				Foot	910
Driving Piles				Foot	910
Concrete Encasement				Cu. Yd.	5.5

For details of piles and Concrete Encasement, see sheet 20 of 23.



ANCHOR BOLT LOCATION DIAGRAM

FILE NAME: E:\0499-018-abut.txdgn
CB PROJECT NO. 04065

AI-L
7-1-10
Coombe-Bloxdorf P.C.
CIVIL ENGINEERS-
STRUCTURAL ENGINEERS-
LAND SURVEYORS
Design Firm License No. 184-002703

USER NAME = .MML.	DESIGNED - RKM	REVISED -
PLOT SCALE = 0.2" = 1' / IN.	CHECKED -	REVISED -
PLOT DATE = 10/16/2012	DRAWN - MML	REVISED -
	CHECKED - MCB	REVISED -

STATE OF ILLINOIS
DEPARTMENT OF TRANSPORTATION

SOUTH ABUTMENT
STRUCTURE NO. 036-0065

SHEET NO. 18 OF 23 SHEETS

F.A.P. RTE.	SECTION	COUNTY	TOTAL SHEETS	SHEET NO.
534	7-2, 6-1	HENDERSON	976	516
CONTRACT NO. 68409				
ILLINOIS FED. AID PROJECT				