

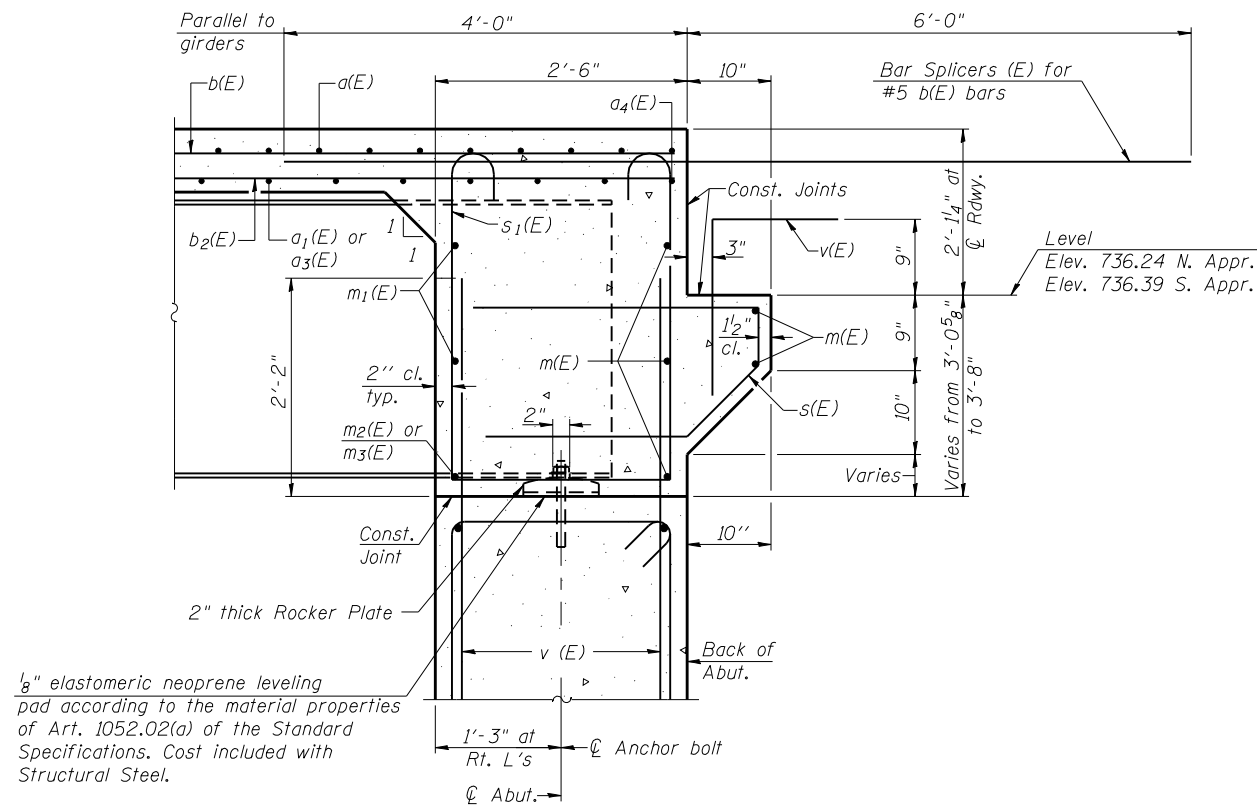
DIAPHRAGM ELEVATION AT ABUTMENT

Notes:

Reinforcement bars in diaphragm are billed with superstructure on sheet 10 of 23.
 Concrete in diaphragm is included with Concrete Superstructure on sheet 10 of 23.
 For details of bars s(E) & s1(E) see sheet 10 of 23.
 The s(E) and s1(E) bars shall be placed parallel to the girders. Spacing for these bars shall be at right angles to the girders.

MIN. BAR LAP

#6 bar = 3'-4"



SECTION A-A

Dimensions at right angles to abutment, except as shown.

FILE NAME = E:\09-09-011-diahr-agn det1.dgn
 CB PROJECT NO. 04065

SI-DSI

1-27-12

Coombe-Bloxdorf P.C.
 CIVIL ENGINEERS-
 STRUCTURAL ENGINEERS-
 LAND SURVEYORS
 Design Firm License No. 184-002703

| | | |
|-----------------------------------|----------------|-----------|
| USER NAME = .MML. | DESIGNED - RKM | REVISED - |
| PLOT SCALE = 0:2.000000 '1' / IN. | CHECKED - | REVISED - |
| PLOT DATE = 10/16/2012 | DRAWN - MML | REVISED - |
| | CHECKED - MCB | REVISED - |

**STATE OF ILLINOIS
 DEPARTMENT OF TRANSPORTATION**

**INTEGRAL ABUTMENT DIAPHRAGM DETAILS
 STRUCTURE NO. 036-0065**

SHEET NO. 11 OF 23 SHEETS

| F.A.P. RTE. | SECTION | COUNTY | TOTAL SHEETS | SHEET NO. |
|---------------------------|----------|-----------|--------------|-----------|
| 534 | 7-2, 6-1 | HENDERSON | 976 | 509 |
| CONTRACT NO. 68409 | | | | |
| ILLINOIS FED. AID PROJECT | | | | |