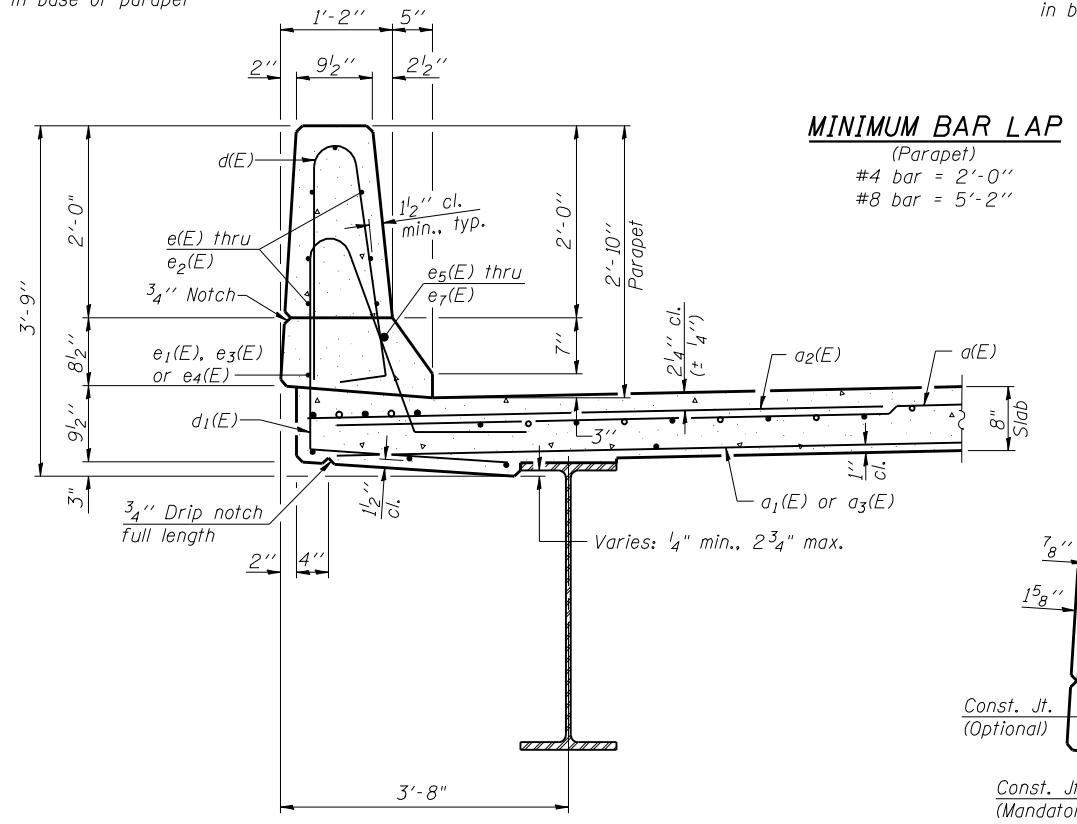
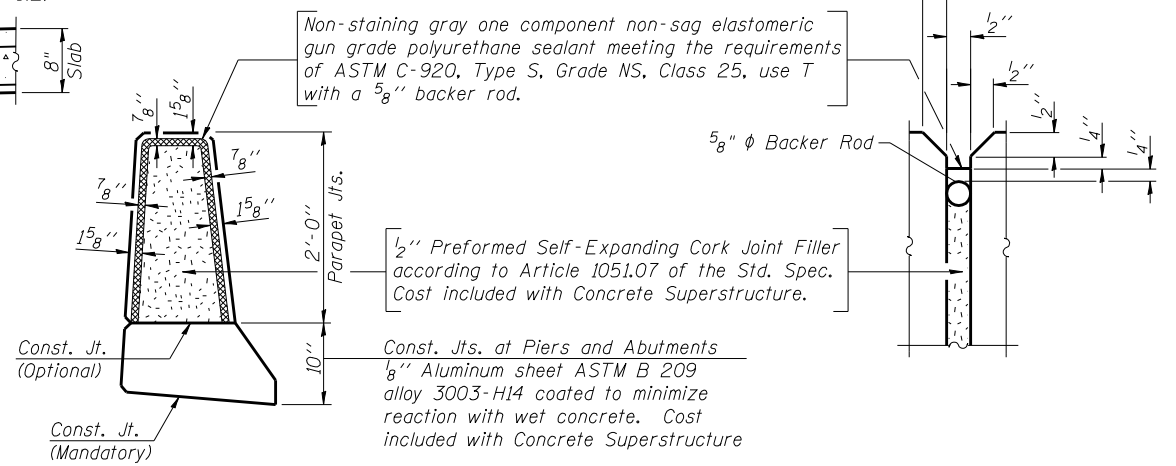


INSIDE ELEVATION OF PARAPET
(Looking East)

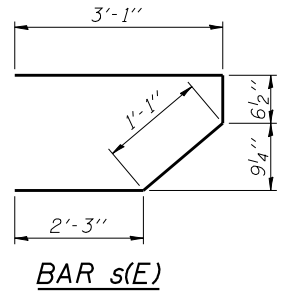


SECTION THRU PARAPET

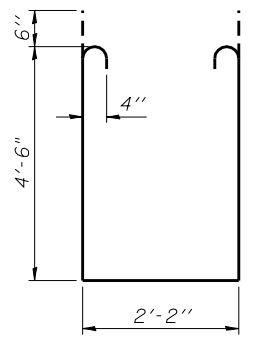
MINIMUM BAR LAP
(Parapet)
#4 bar = 2'-0"
#8 bar = 5'-2"



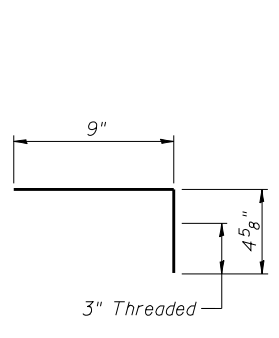
PARAPET JOINT DETAILS



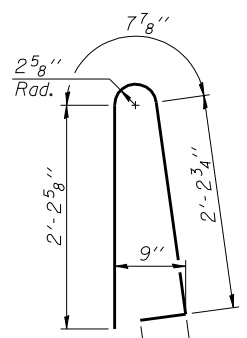
BAR s(E)



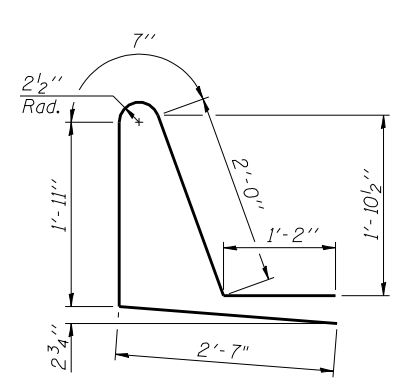
BAR s1(E)



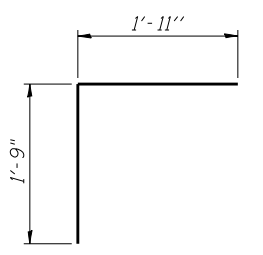
BAR c1(E)



BAR d(E)



BAR d1(E)



BAR v(E)

SUPERSTRUCTURE
BILL OF MATERIAL

Bar	No.	Size	Length	Shape
a(E)	1012	#5	35'-11"	—
a1(E)	317	#5	28'-9"	—
a2(E)	1012	#6	6'-6"	—
a3(E)	317	#5	41'-9"	—
a4(E)	8	#5	36'-5"	—
b(E)	504	#5	32'-5"	—
b1(E)	207	#6	24'-5"	—
b2(E)	552	#5	28'-8"	—
b3(E)	40	#5	29'-3"	—
c(E)	212	#5	4'-6"	—
c1(E)	424	#5	1'-2"	└
d(E)	460	#5	5'-7"	└
d1(E)	460	#5	8'-3"	└
e(E)	70	#4	17'-2"	—
e1(E)	32	#4	19'-5"	—
e2(E)	70	#4	16'-4"	—
e3(E)	6	#4	30'-6"	—
e4(E)	6	#4	29'-2"	—
e5(E)	6	#8	32'-8"	—
e6(E)	4	#8	19'-5"	—
e7(E)	6	#8	31'-3"	—
m(E)	30	#6	25'-6"	—
m1(E)	32	#6	11'-9"	—
m2(E)	14	#6	8'-6"	—
m3(E)	4	#6	3'-5"	—
s(E)	138	#5	7'-0"	└
s1(E)	124	#4	12'-2"	└
v(E)	138	#5	3'-8"	└
Reinforcement Bars, Epoxy Coated		Pound	129,820	
Concrete Superstructure		Cu. Yds.	491.8	

Bars indicated thus 1 x 3 - #4 etc. indicates 1 line of bars with 3 lengths per line.

FILE NAME: E:\08\09-010-00-00-00.dgn
CB PROJECT NO. 04065

S-I-D
1-27-12
Coombe-Bloxdorf P.C.
CIVIL ENGINEERS
STRUCTURAL ENGINEERS
LAND SURVEYORS
Design Firm License No. 184-002703

USER NAME = MML	DESIGNED - RKM	REVISED -
PLOT SCALE = 0/2" = 1' / IN.	CHECKED -	REVISED -
PLOT DATE = 10/16/2012	DRAWN - MML	REVISED -
	CHECKED - MCB	REVISED -

STATE OF ILLINOIS
DEPARTMENT OF TRANSPORTATION

SUPERSTRUCTURE DETAILS
STRUCTURE NO. 036-0065

SHEET NO. 10 OF 23 SHEETS

F.A.P. RTE. 534	SECTION 7-2, 6-1	COUNTY HENDERSON	TOTAL SHEETS 976	SHEET NO. 508
			CONTRACT NO. 68409	
ILLINOIS FED. AID PROJECT				