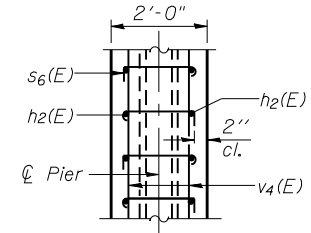
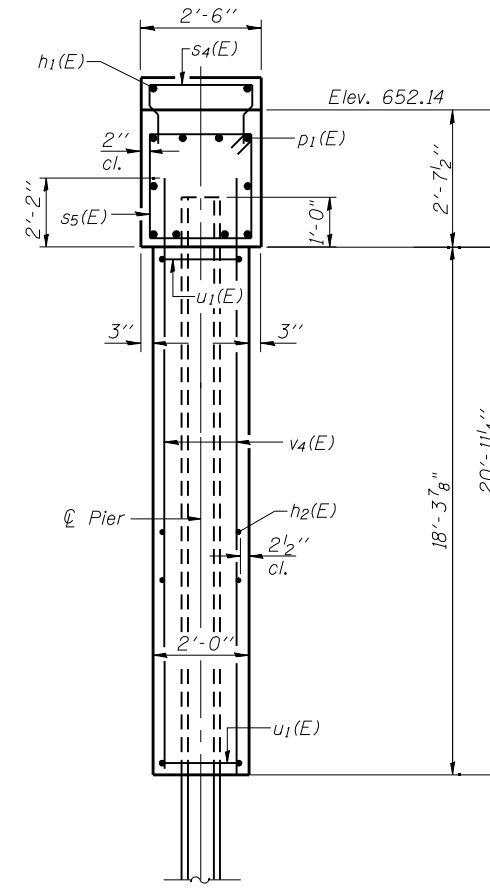


Notes:
 Space reinforcement in cap to miss anchor bolts.
 Pour steps monolithically with cap.
 For details of piles and encasement, see sheet 38 of 45.



SECTION THRU WALL AT PILE LOCATION

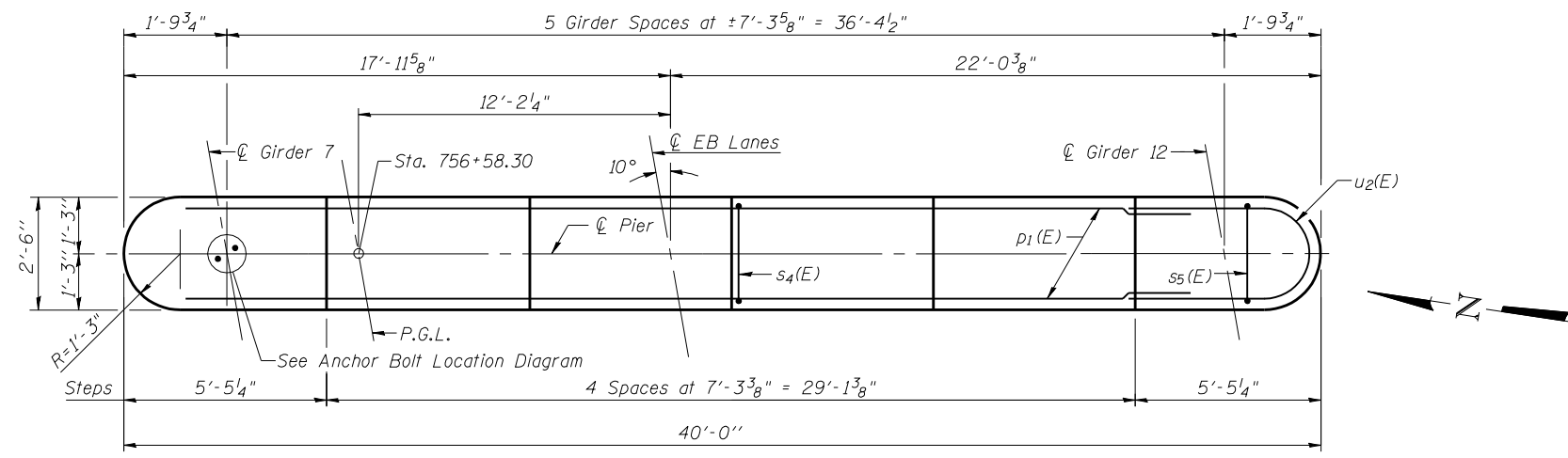
Showing alternating placement of s₆(E) bars



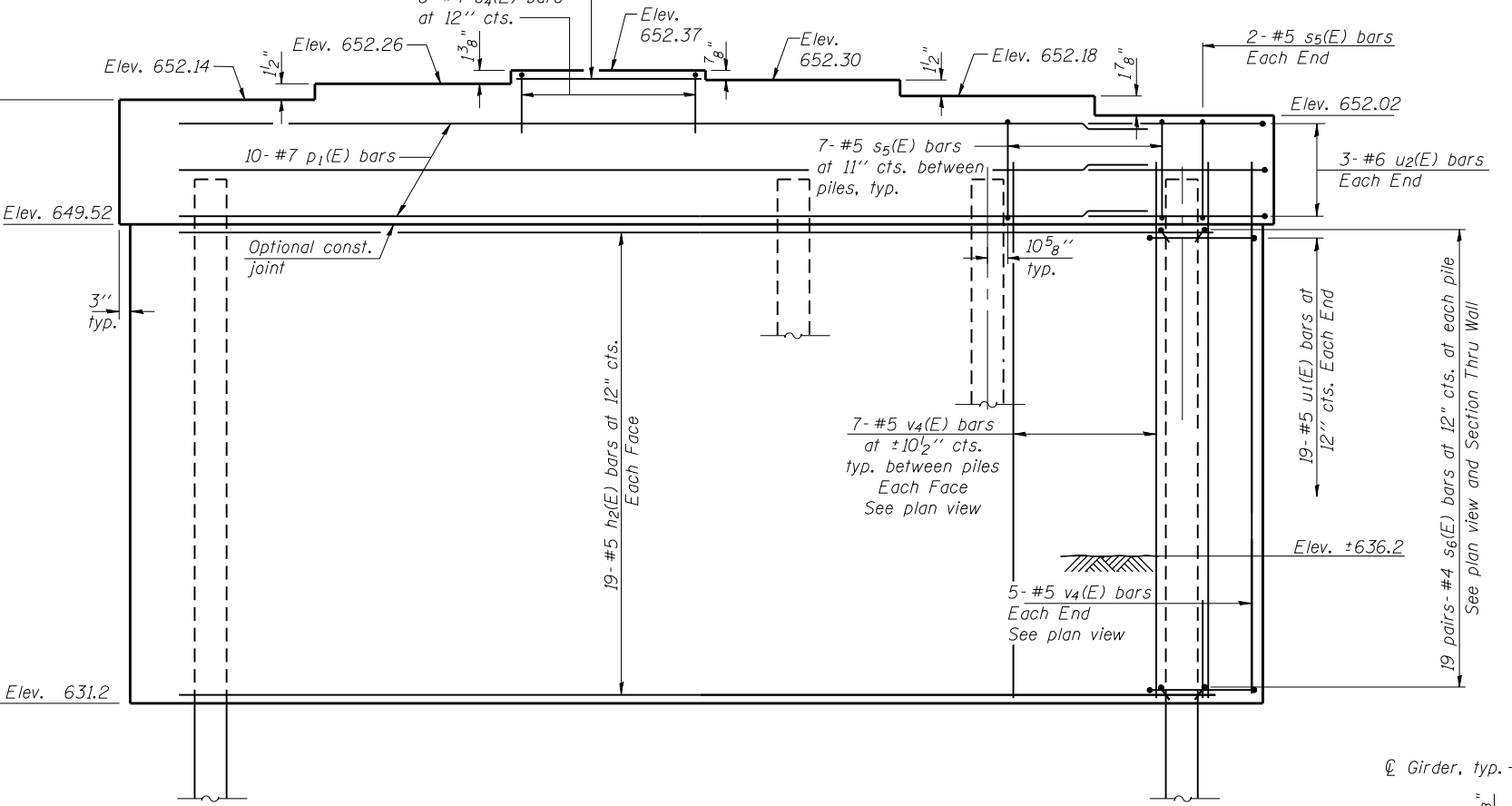
END VIEW

PILE DATA

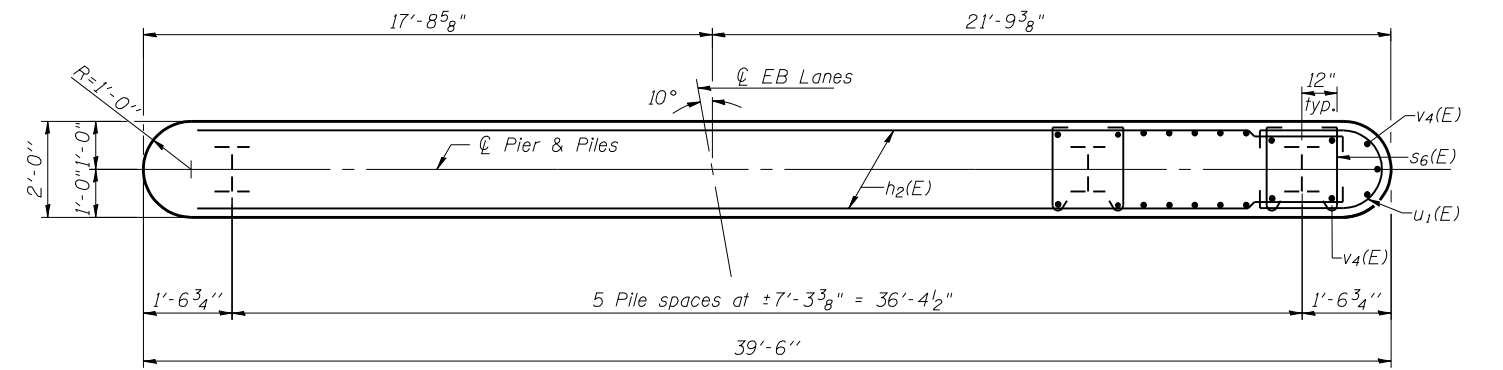
Type: Steel HP 14x89 with pile shoes
 Nominal Required Bearing: 705 kip
 Factored Resistance Available: 388 kip
 Est. Length: 66 ft.
 No. Production Piles: 5
 No. Test Piles: 1



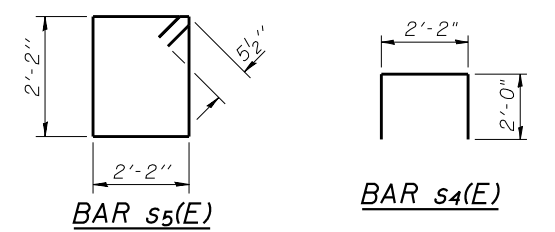
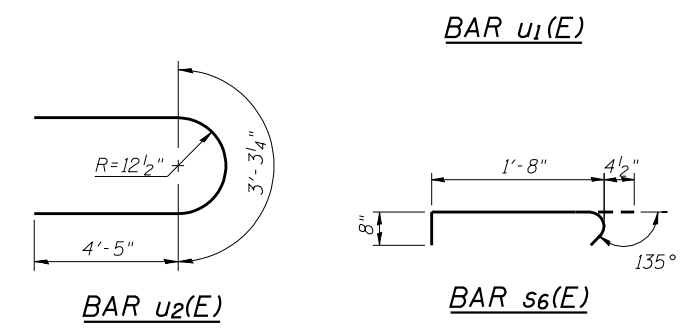
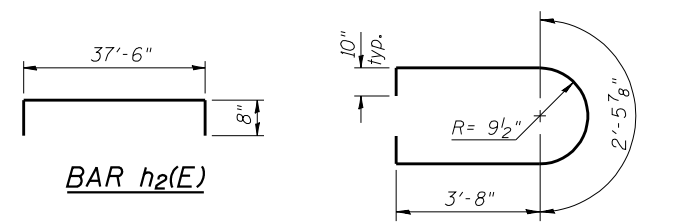
TOP PLAN



ELEVATION (Looking East)

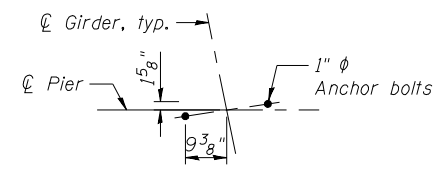


PLAN



BILL OF MATERIAL

Bar	No.	Size	Length	Shape
h ₁ (E)	2	#4	7'-0"	—
h ₂ (E)	38	#5	38'-10"	—
p ₁ (E)	10	#7	37'-6"	—
s ₄ (E)	8	#4	6'-2"	—
s ₅ (E)	37	#5	9'-7"	—
s ₆ (E)	228	#4	2'-9"	—
u ₁ (E)	38	#5	11'-6"	—
u ₂ (E)	6	#6	12'-2"	—
v ₄ (E)	80	#5	20'-4"	—
Structure Excavation		Cu. Yd.	48	
Concrete Structures		Cu. Yd.	62.1	
Reinforcement Bars, Epoxy Coated		Pound	5400	
Furnishing Steel Piles HP 14 x 89		Foot	330	
Driving Piles HP 14 x 89		Foot	330	
Test Pile Steel HP 14 x 89		Each	1	
Pile Shoes		Each	6	



ANCHOR BOLT LOCATION DIAGRAM

FILE NAME = 036-0062-78134-036-pier1.ab.dgn
 CB PROJECT NO. 04065

Coombe-Bloxdorf P.C.
 CIVIL ENGINEERS-
 STRUCTURAL ENGINEERS-
 LAND SURVEYORS
 Design Firm License No. 184-002703

USER NAME = .MML.	DESIGNED - CME	REVISED -
PLOT SCALE = 0/2" = 1' / IN.	CHECKED - MCB	REVISED -
PLOT DATE = 10/16/2012	DRAWN - MML	REVISED -
	CHECKED - MCB	REVISED -

**STATE OF ILLINOIS
 DEPARTMENT OF TRANSPORTATION**

**PIER 1
 STRUCTURE NO. 036-0062 (E.B.)**
 SHEET NO. 36 OF 45 SHEETS

F.A.P. RTE. 313	SECTION 7-2, 6-1	COUNTY HENDERSON	TOTAL SHEETS 976	SHEET NO. 489
			CONTRACT NO. 68409	
ILLINOIS FED. AID PROJECT				