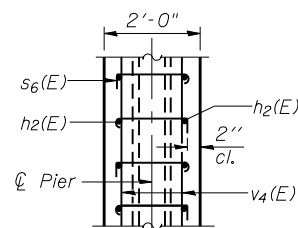
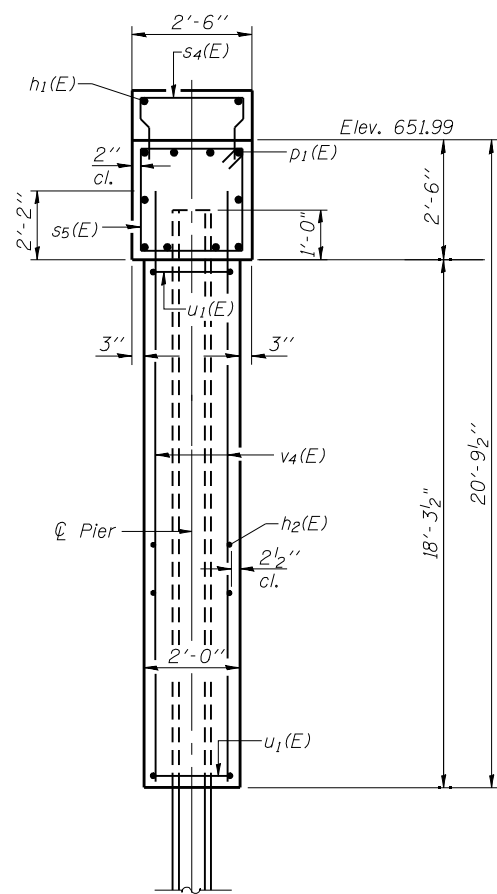


Notes:
 Space reinforcement in cap to miss anchor bolts.
 Pour steps monolithically with cap.
 For details of piles, see sheet 38 of 45.



SECTION THRU WALL AT PILE LOCATION

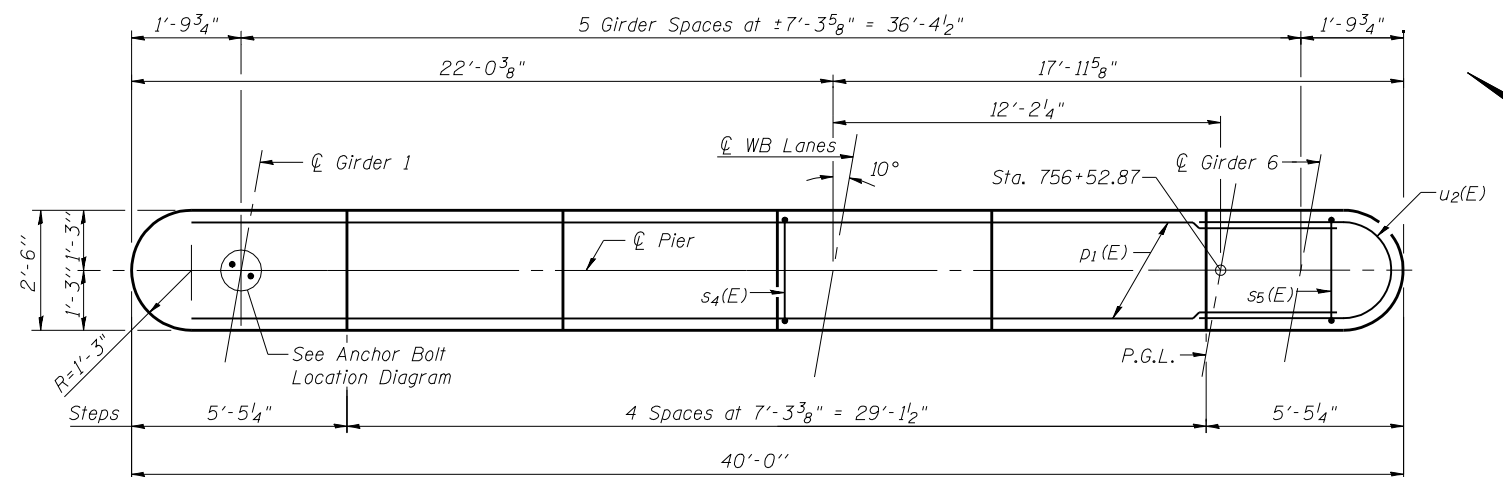
Showing alternating placement of $s_6(E)$ bars



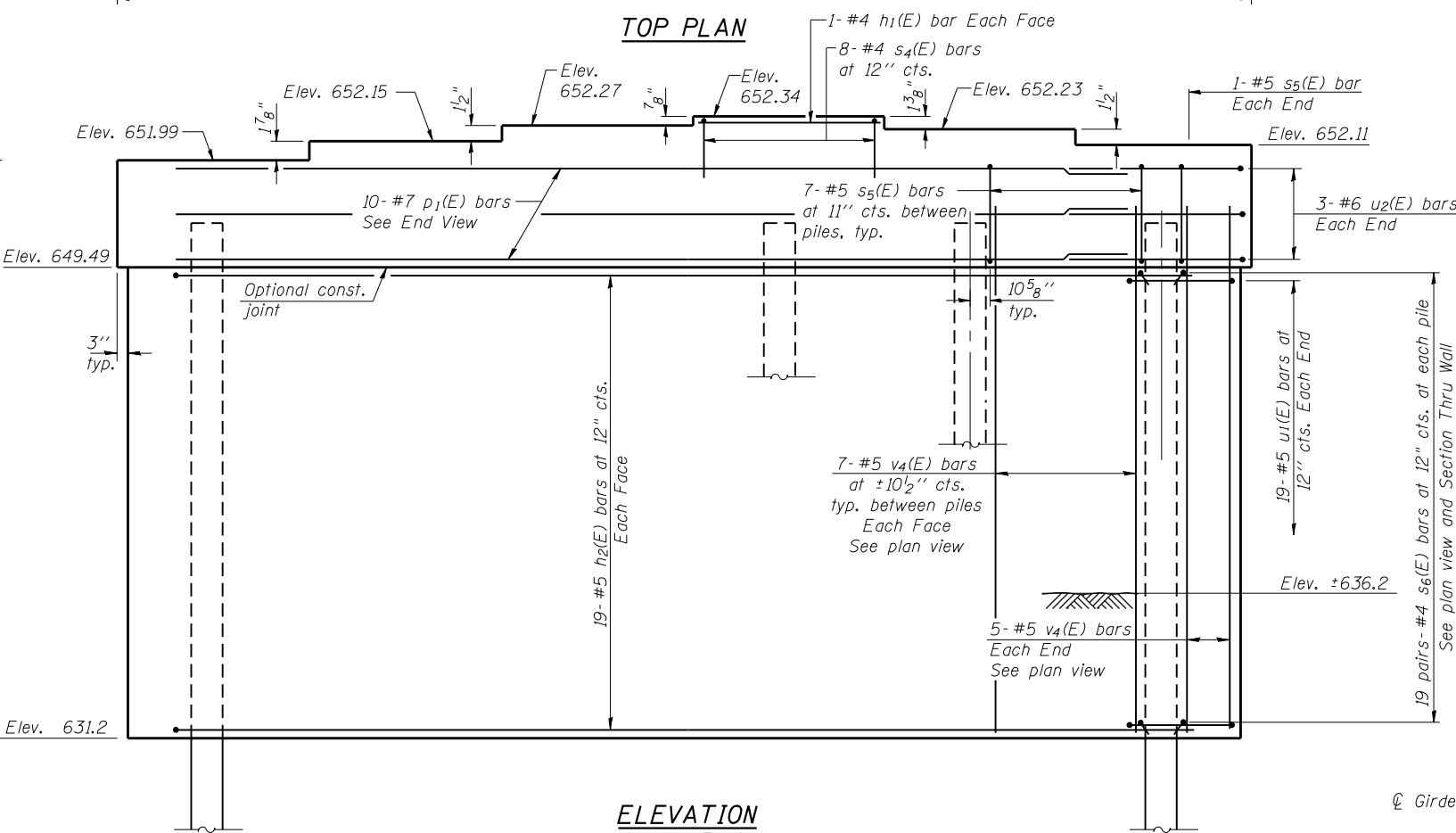
END VIEW

PILE DATA

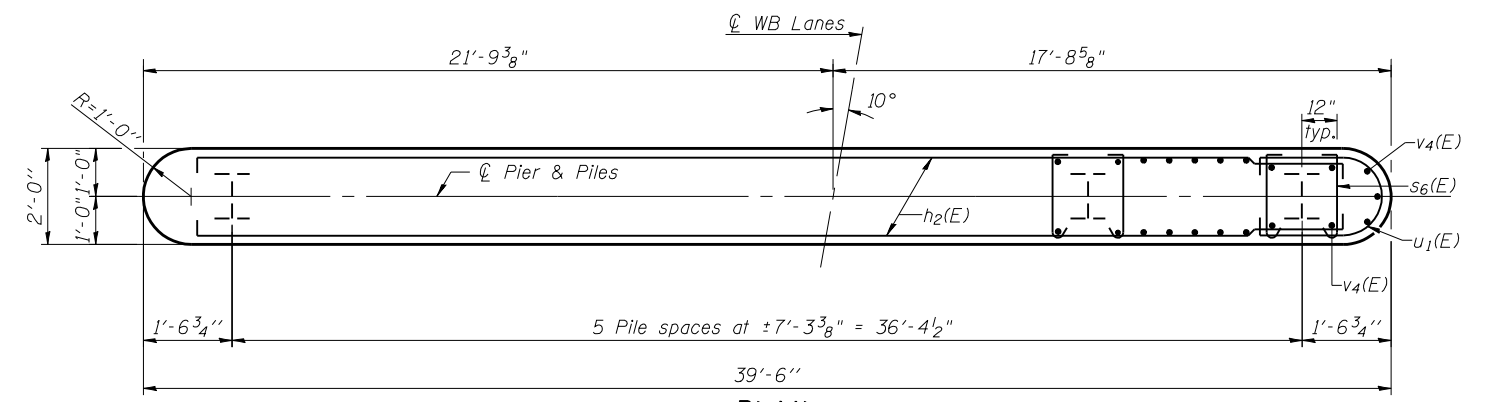
Type: Steel HP 14x89 with pile shoes
 Nominal Required Bearing: 705 kip
 Factored Resistance Available: 388 kip
 Est. Length: 46 ft.
 No. Production Piles: 5
 No. Test Piles: 1



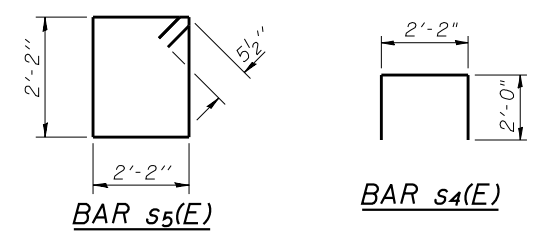
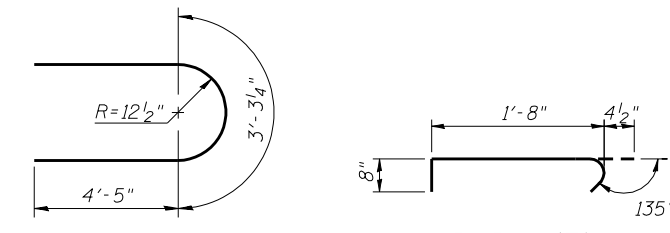
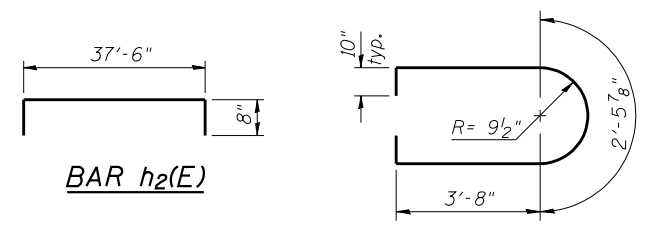
TOP PLAN



ELEVATION (Looking East)

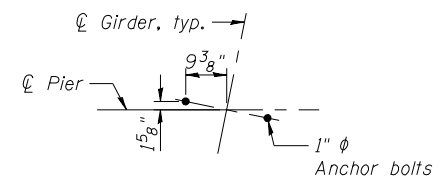


PLAN



BILL OF MATERIAL

Bar	No.	Size	Length	Shape
$h_1(E)$	2	#4	7'-0"	—
$h_2(E)$	38	#5	38'-10"	U
$p_1(E)$	10	#7	37'-6"	—
$s_4(E)$	8	#4	6'-2"	U
$s_5(E)$	37	#5	9'-7"	U
$s_6(E)$	228	#4	2'-9"	U
$u_1(E)$	38	#5	11'-6"	U
$u_2(E)$	6	#6	12'-2"	U
$v_4(E)$	80	#5	20'-4"	—
Structure Excavation			Cu. Yd.	48
Concrete Structures			Cu. Yd.	62.1
Reinforcement Bars, Epoxy Coated			Pound	5400
Furnishing Steel Piles HP 14 x 89			Foot	230
Driving Piles			Foot	230
Test Pile Steel HP 14 x 89			Each	1
Pile Shoes			Each	6



ANCHOR BOLT LOCATION DIAGRAM

FILE NAME = 0063-78134-034-pier1.wb.dgn
 CB PROJECT NO. 04065

Coombe-Bloxdorf P.C.
 CIVIL ENGINEERS-
 STRUCTURAL ENGINEERS-
 LAND SURVEYORS
 Design Firm License No. 184-002703

USER NAME = .MML.	DESIGNED - CME	REVISED -
PLOT SCALE = 0/2" = 1" / IN.	CHECKED - MCB	REVISED -
PLOT DATE = 10/16/2012	DRAWN - MML	REVISED -
	CHECKED - MCB	REVISED -

STATE OF ILLINOIS DEPARTMENT OF TRANSPORTATION

**PIER 1
 STRUCTURE NO. 036-0063 (W.B.)**
 SHEET NO. 34 OF 45 SHEETS

F.A.P. RTE. 313	SECTION 7-2, 6-1	COUNTY HENDERSON	TOTAL SHEETS 976	SHEET NO. 487
CONTRACT NO. 68409				

ILLINOIS FED. AID PROJECT