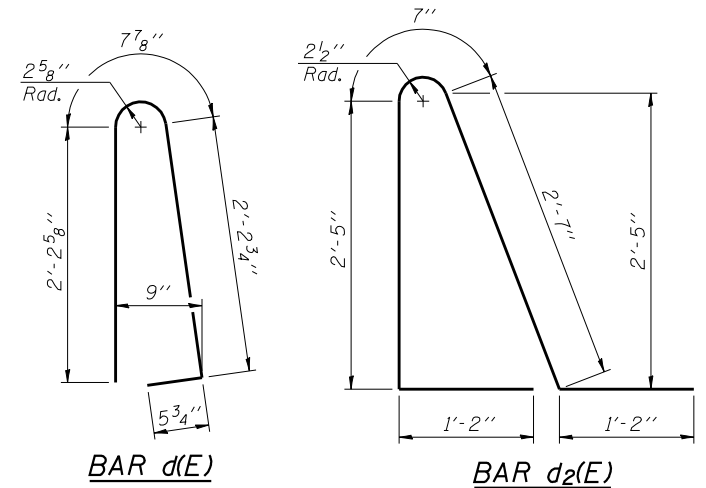
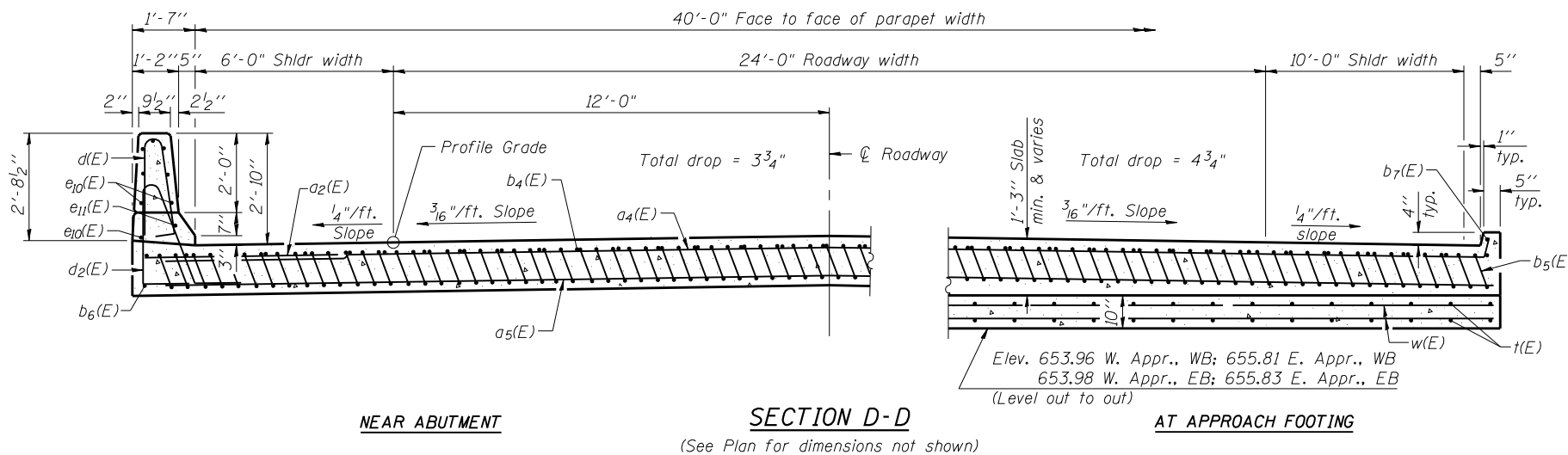


Notes:
 See sheet 22 and 23 of 45 for Detail A and View B-B.
 Approach slab and parapet concrete shall be paid for as Concrete Superstructure.
 Approach footing concrete shall be paid for as Concrete Structures.
 Reinforcement shall be paid for as Reinforcement Bars, Epoxy Coated.
 For v(E) bar details, see sheet 20 of 45.
 The approach footing maximum applied service bearing pressure (Q_{max}) = 2.0 ksf.
 For bar splicer details, see sheet 39 of 45.
 Cost of excavation for approach footing included with Concrete Structures.
 For Porous Granular Backfill and drainage treatment details, see sheet 2 of 45.
 For additional parapet details, see sheet 20 of 45.



* Tilt #9 b₅(E) bars as required to maintain clearance.
 *** Cost included with Concrete Superstructure.

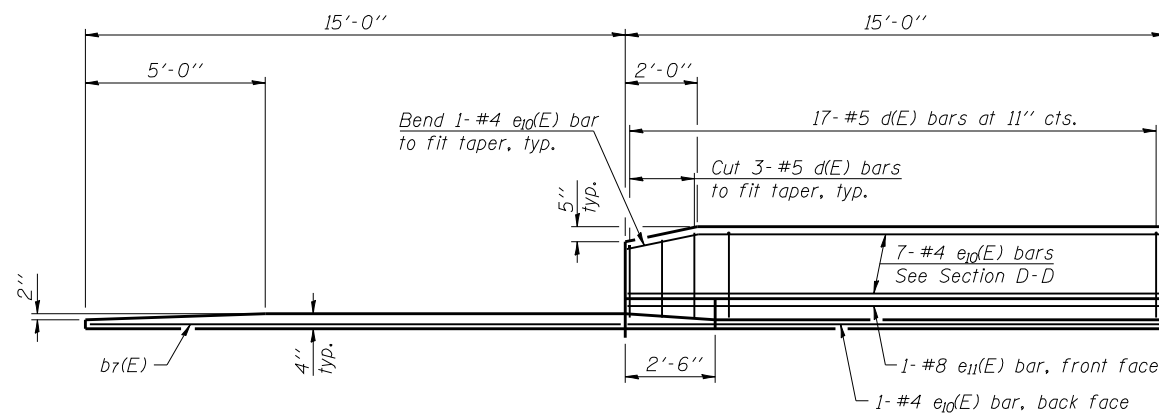


NEAR ABUTMENT

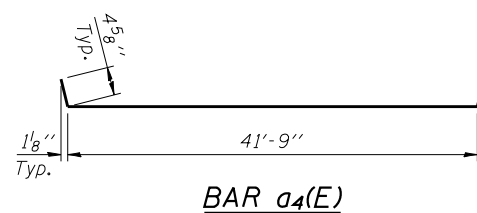
SECTION D-D

AT APPROACH FOOTING

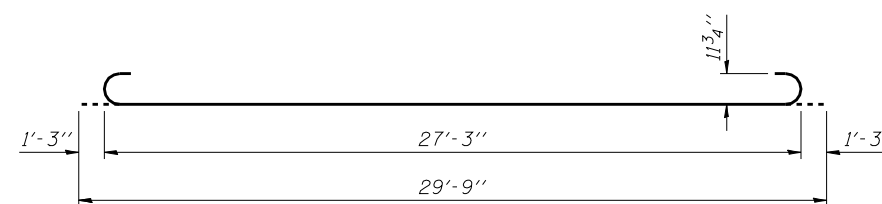
(See Plan for dimensions not shown)



VIEW E-E



BAR a₄(E)



BAR b₅(E)

FOUR APPROACHES
 BILL OF MATERIAL

Bar	No.	Size	Length	Shape
a ₂ (E)	96	#6	6'-6"	—
a ₄ (E)	100	#4	42'-7"	—
a ₅ (E)	184	#5	42'-2"	—
b ₄ (E)	132	#4	29'-8"	—
b ₅ (E)	396	#9	29'-9"	—
b ₆ (E)	8	#4	14'-8"	—
b ₇ (E)	8	#4	14'-9"	—
d(E)	136	#5	5'-7"	—
d ₂ (E)	136	#5	7'-11"	—
e ₁₀ (E)	64	#4	14'-8"	—
e ₁₁ (E)	8	#8	14'-8"	—
t(E)	336	#4	9'-10"	—
w(E)	160	#5	42'-2"	—
Concrete Superstructure			Cu. Yd.	264.8
Concrete Structures			Cu. Yd.	52.2
Reinforcement Bars, Epoxy Coated			Pound	66,800

See Note A:
 Note A: 57,560 lbs (Superstructure)
 9240 lbs (Substructure)

(Sheet 3 of 3)

FILE NAME = 0363-0063-78134-024-appr-det.dgn
 CB PROJECT NO. 04065

BA-L
 1-27-12
Coombe-Bloxdorf P.C.
 CIVIL ENGINEERS-
 STRUCTURAL ENGINEERS-
 LAND SURVEYORS
 Design Firm License No. 184-002703

USER NAME = .MML.	DESIGNED - CME	REVISED -
PLOT SCALE = 0/2" = 1' / IN.	CHECKED - MCB	REVISED -
PLOT DATE = 10/16/2012	DRAWN - MML	REVISED -
	CHECKED - MCB	REVISED -

STATE OF ILLINOIS
 DEPARTMENT OF TRANSPORTATION

BRIDGE APPROACH SLAB DETAILS
 STRUCTURE NO. 036-0062 (E.B.) & 036-0063 (W.B.)

SHEET NO. 24 OF 45 SHEETS

F.A.P. RTE. 313	SECTION 7-2, 6-1	COUNTY HENDERSON	TOTAL SHEETS 976	SHEET NO. 477
			CONTRACT NO. 68409	
ILLINOIS FED. AID PROJECT				