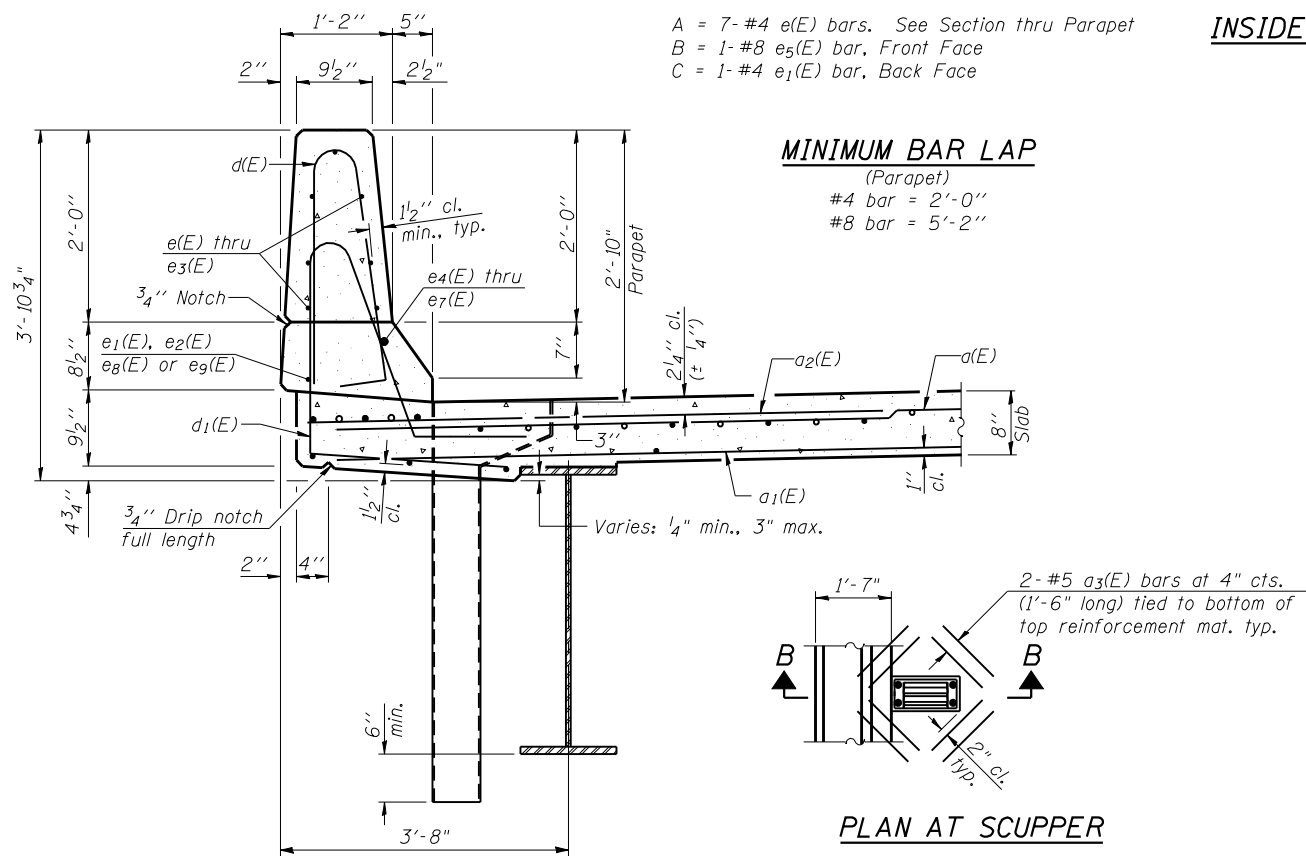


A = 7-#4 e(E) bars. See Section thru Parapet  
 B = 1-#8 e5(E) bar, Front Face  
 C = 1-#4 e1(E) bar, Back Face

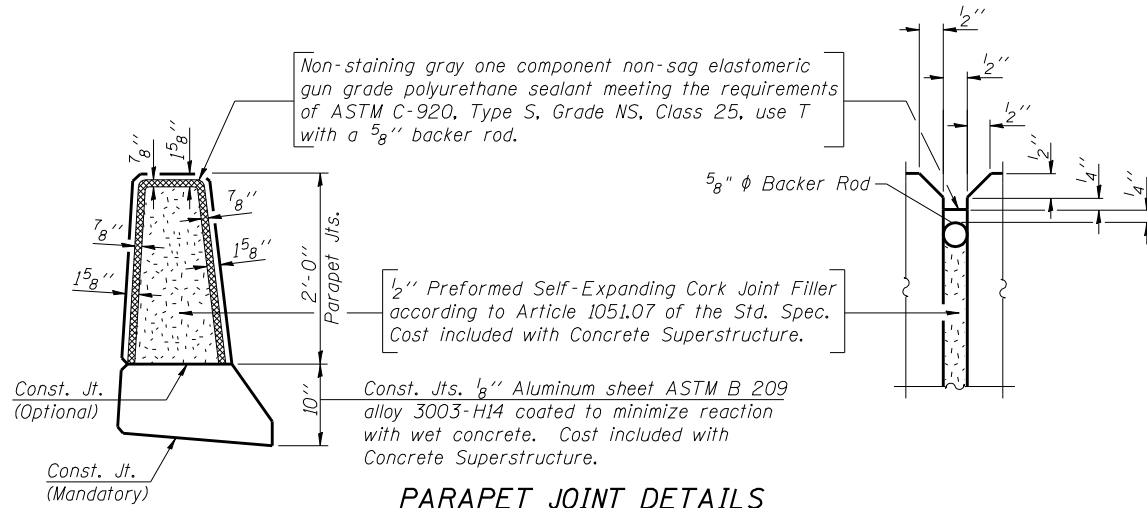
**INSIDE ELEVATION OF N PARAPETS**



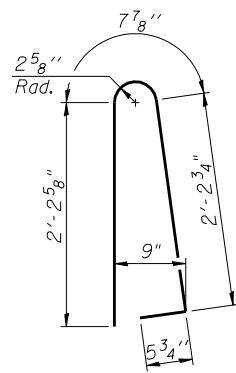
**SECTION B-B  
THRU PARAPET AT SCUPPER**

**MINIMUM BAR LAP**  
(Parapet)

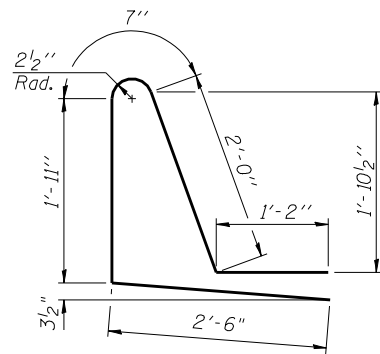
#4 bar = 2'-0"  
 #8 bar = 5'-2"



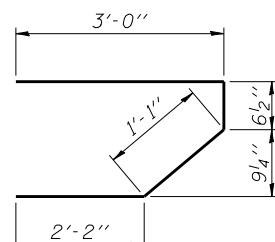
**PARAPET JOINT DETAILS**



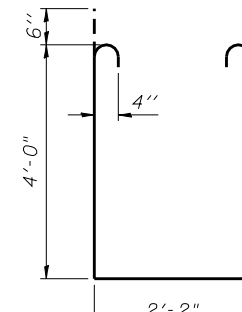
**BAR d(E)**



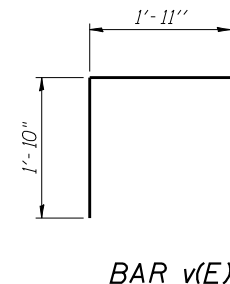
**BAR d1(E)**



**BAR s(E)**



**BAR s1(E)**



**BAR v(E)**

**BILL OF MATERIAL  
TWO SUPERSTRUCTURES**

Bar	No.	Size	Length	Shape
a(E)	1360	#5	42'-6"	—
a1(E)	826	#5	41'-10"	—
a2(E)	2704	#6	6'-6"	—
a3(E)	32	#5	1'-6"	—
b(E)	920	#5	33'-4"	—
b1(E)	86	#6	43'-0"	—
b2(E)	902	#5	30'-6"	—
b3(E)	172	#6	46'-8"	—
d(E)	1352	#5	5'-7"	U
d1(E)	1352	#5	8'-2"	U
e(E)	224	#4	16'-10"	—
e1(E)	64	#4	10'-11"	—
e2(E)	64	#4	19'-8"	—
e3(E)	168	#4	18'-0"	—
e4(E)	16	#8	36'-10"	—
e5(E)	8	#8	10'-11"	—
e6(E)	8	#8	19'-8"	—
e7(E)	16	#8	31'-4"	—
e8(E)	16	#4	35'-3"	—
e9(E)	16	#4	28'-11"	—
m(E)	20	#6	43'-6"	—
m1(E)	48	#6	10'-8"	—
m2(E)	20	#6	6'-11"	—
m3(E)	8	#6	3'-4"	—
s(E)	164	#5	6'-10"	—
s1(E)	144	#4	11'-2"	—
v(E)	172	#5	3'-9"	—
Reinforcement Bars, Epoxy Coated		Pound	235,790	
Concrete Superstructure		Cu. Yds.	908.8	

Bars indicated thus 1 x 2-#8 etc. indicates 1 line of bars with 2 lengths per line.

FILE NAME = 0363-0063-78134-029-superstr-dwt.dgn  
 CB PROJECT NO. 04065

S-I-D 1-27-12

**Coombe-Bloxdorf P.C.**  
 CIVIL ENGINEERS-  
 STRUCTURAL ENGINEERS-  
 LAND SURVEYORS  
 Design Firm License No. 184-002703

USER NAME = .MML.  
 PLOT SCALE = 0/2" = 1' / IN.  
 PLOT DATE = 10/16/2012

DESIGNED - CME  
 CHECKED - MCB  
 DRAWN - MML  
 CHECKED - MCB

REVISED -  
 REVISED -  
 REVISED -  
 REVISED -

**STATE OF ILLINOIS  
DEPARTMENT OF TRANSPORTATION**

**SUPERSTRUCTURE DETAILS  
STRUCTURE NO. 036-0062 (E.B.) & 036-0063 (W.B.)**

SHEET NO. 20 OF 45 SHEETS

F.A.P. RTE. 313 SECTION 7-2, 6-1 COUNTY HENDERSON TOTAL SHEETS 976 SHEET NO. 473 CONTRACT NO. 68409 ILLINOIS FED. AID PROJECT