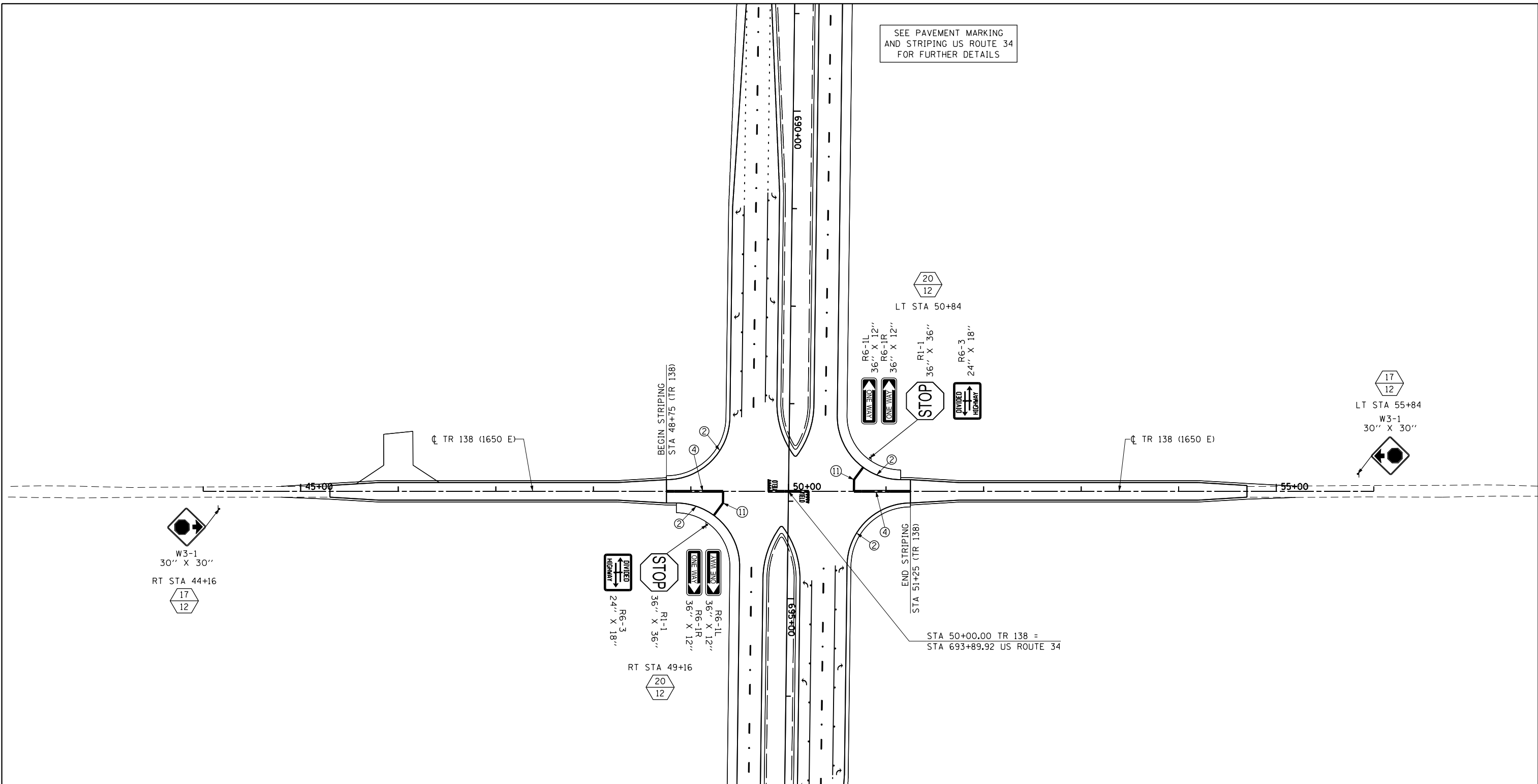


SEE PAVEMENT MARKING AND STRIPING US ROUTE 34 FOR FURTHER DETAILS



**PAVEMENT MARKING LEGEND**

- ① MODIFIED URETHANE PAVEMENT MARKING - LETTERS & SYMBOLS
- ② MODIFIED URETHANE PAVEMENT MARKING - LINE 4" WHITE SOLID
- ③ MODIFIED URETHANE PAVEMENT MARKING - LINE 4" YELLOW SOLID
- ④ MODIFIED URETHANE PAVEMENT MARKING - LINE 4" YELLOW SOLID (DOUBLE LINE)
- ⑤ MODIFIED URETHANE PAVEMENT MARKING - LINE 4" YELLOW SKIP DASH
- ⑥ PREFORMED PLASTIC PAVEMENT MARKING - LINE 6" WHITE SKIP DASH
- ⑦ MODIFIED URETHANE PAVEMENT MARKING - LINE 8" WHITE SOLID
- ⑧ MODIFIED URETHANE PAVEMENT MARKING - LINE 8" WHITE DOTTED
- ⑨ MODIFIED URETHANE PAVEMENT MARKING - LINE 12" WHITE SOLID
- ⑩ MODIFIED URETHANE PAVEMENT MARKING - LINE 12" YELLOW SOLID
- ⑪ MODIFIED URETHANE PAVEMENT MARKING - LINE 24" WHITE SOLID (STOP BAR)

• PAVEMENT MARKING SHALL BE IN ACCORDANCE WITH DISTRICT CADD STANDARDS - 780001-D4

**RAISED REFLECTIVE PAVEMENT MARKERS (RRPM) LEGEND**

- △ ONE-WAY CRYSTAL MARKER AT 80' CENTERS
- △ ONE-WAY CRYSTAL MARKER AT 40' CENTERS
- △ ONE-WAY CRYSTAL MARKER AT 20' CENTERS
- ▲ ONE-WAY AMBER MARKER AT 40' CENTERS
- ▲ ONE-WAY AMBER MARKER AT 20' CENTERS
- ◆ TWO-WAY AMBER MARKER
- ◆ TWO-WAY CRYSTAL / RED MARKER
- ◆ TWO-WAY AMBER / RED MARKER

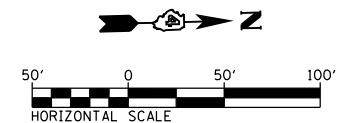
**SIGN POST LEGEND**

- WOOD POST LENGTH
- OFFSET FROM EOP

**STATE OF ILLINOIS  
DEPARTMENT OF TRANSPORTATION**

**PAVEMENT MARKING AND SIGNING  
TR 138 (1650 E)**

SCALE: 1" = 50' SHEET NO. 20 OF 24 SHEETS STA. 44+00 TO STA. 56+00



FILE NAME = D468409-SHT-20-PMK-TR138-02.dgn

USER NAME = zach1	DESIGNED - DBS	REVISED -
PLOT SCALE = 100.0000' / in.	DRAWN - PSBA	REVISED -
PLOT DATE = 10/16/2012	CHECKED - CSB	REVISED -
	DATE - 10/2012	REVISED -

F.A.P. RTE.	SECTION	COUNTY	TOTAL SHEETS	SHEET NO.
313	7-2 ; 6-1	HENDERSON	976	408
CONTRACT NO. 68409				
ILLINOIS FED. AID PROJECT				