

PAVEMENT MARKING LEGEND

- ① MODIFIED URETHANE PAVEMENT MARKING - LETTERS & SYMBOLS
- ② MODIFIED URETHANE PAVEMENT MARKING - LINE 4" WHITE SOLID
- ③ MODIFIED URETHANE PAVEMENT MARKING - LINE 4" YELLOW SOLID
- ④ MODIFIED URETHANE PAVEMENT MARKING - LINE 4" YELLOW SOLID (DOUBLE LINE)
- ⑤ MODIFIED URETHANE PAVEMENT MARKING - LINE 4" YELLOW SKIP DASH
- ⑥ PREFORMED PLASTIC PAVEMENT MARKING - LINE 6" WHITE SKIP DASH
- ⑦ MODIFIED URETHANE PAVEMENT MARKING - LINE 8" WHITE SOLID
- ⑧ MODIFIED URETHANE PAVEMENT MARKING - LINE 8" WHITE DOTTED
- ⑨ MODIFIED URETHANE PAVEMENT MARKING - LINE 12" WHITE SOLID
- ⑩ MODIFIED URETHANE PAVEMENT MARKING - LINE 12" YELLOW SOLID
- ⑪ MODIFIED URETHANE PAVEMENT MARKING - LINE 24" WHITE SOLID (STOP BAR)

• PAVEMENT MARKING SHALL BE IN ACCORDANCE WITH DISTRICT CADD STANDARDS - 780001-D4

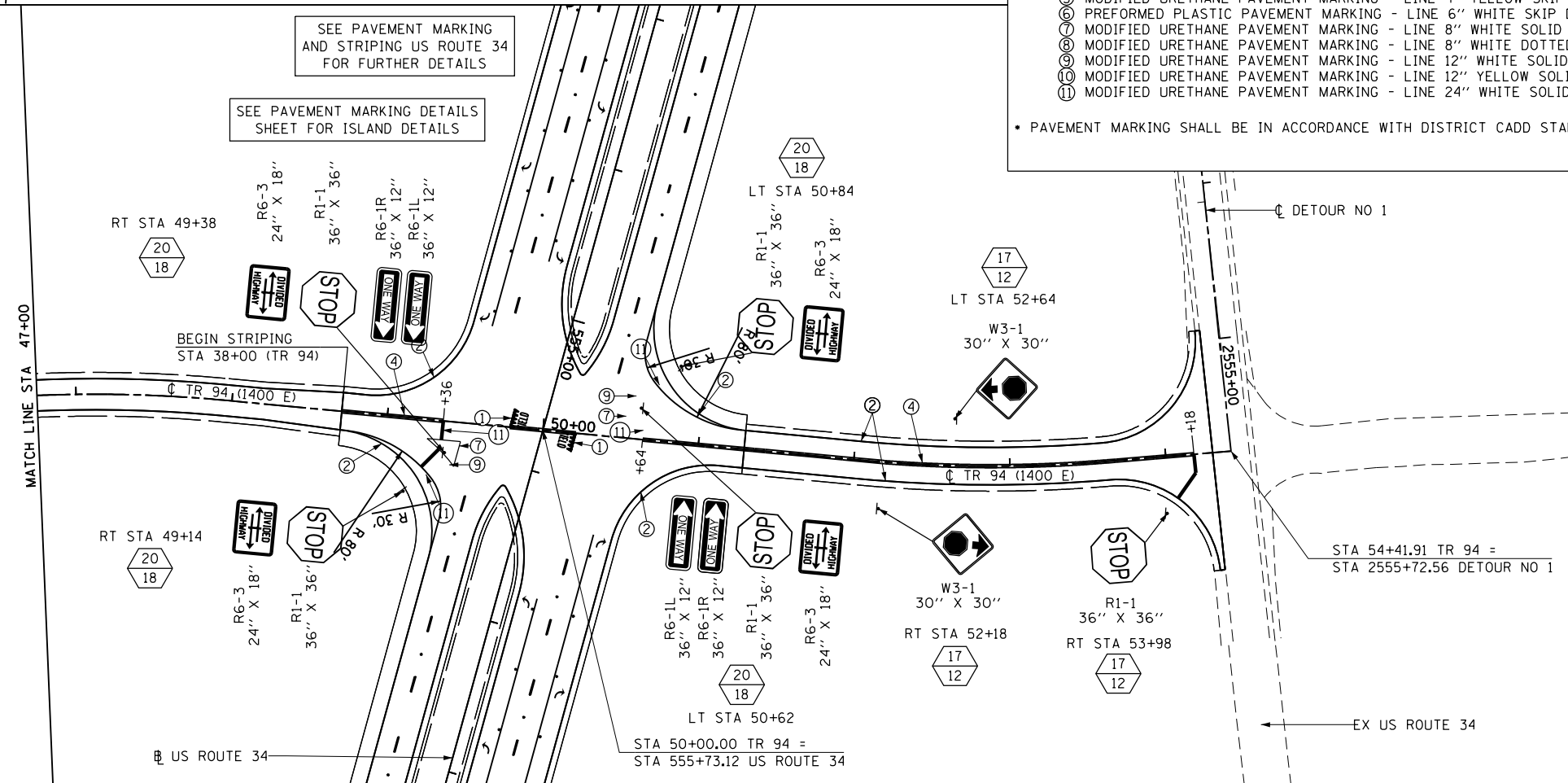
RAISED REFLECTIVE PAVEMENT MARKERS (RRPM) LEGEND

- ① △ ONE-WAY CRYSTAL MARKER AT 80' CENTERS
- ② △ ONE-WAY CRYSTAL MARKER AT 40' CENTERS
- ③ △ ONE-WAY CRYSTAL MARKER AT 20' CENTERS
- ④ ▲ ONE-WAY AMBER MARKER AT 40' CENTERS
- ⑤ ▲ ONE-WAY AMBER MARKER AT 20' CENTERS
- ⑥ ◆ TWO-WAY AMBER MARKER
- ⑦ ◆ TWO-WAY CRYSTAL / RED MARKER
- ⑧ ◆ TWO-WAY AMBER / RED MARKER

SIGN POST LEGEND

◆ WOOD POST LENGTH

◆ OFFSET FROM EOP



SEE PAVEMENT MARKING AND STRIPING US ROUTE 34 FOR FURTHER DETAILS

SEE PAVEMENT MARKING DETAILS SHEET FOR ISLAND DETAILS

BEGIN STRIPING STA 38+00 (TR 94)

STA 54+41.91 TR 94 = STA 2555+72.56 DETOUR NO 1

STA 50+00.00 TR 94 = STA 555+73.12 US ROUTE 34

FILE NAME = D468409-SHT-19-PMK-TR94-01.dgn

USER NAME = zach1
 DESIGNED - DBS
 DRAWN - PSBA
 CHECKED - CSB
 DATE - 10/2012

REVISED -
 REVISED -
 REVISED -
 REVISED -

**STATE OF ILLINOIS
 DEPARTMENT OF TRANSPORTATION**

**PAVEMENT MARKING AND SIGNING
 TR 94 (1400 E)**

SCALE: 1" = 50' SHEET NO. 19 OF 24 SHEETS STA. 38+00 TO STA. 54+41.91

F.A.P. RTE.	SECTION	COUNTY	TOTAL SHEETS	SHEET NO.
313	7-2 ; 6-1	HENDERSON	976	407
CONTRACT NO. 68409				
ILLINOIS FED. AID PROJECT				