

PAVEMENT MARKING LEGEND

- ⊙ MODIFIED URETHANE PAVEMENT MARKING - LETTERS & SYMBOLS
- ⊙ MODIFIED URETHANE PAVEMENT MARKING - LINE 4" WHITE SOLID
- ⊙ MODIFIED URETHANE PAVEMENT MARKING - LINE 4" YELLOW SOLID
- ⊙ MODIFIED URETHANE PAVEMENT MARKING - LINE 4" YELLOW SOLID (DOUBLE LINE)
- ⊙ MODIFIED URETHANE PAVEMENT MARKING - LINE 4" YELLOW SKIP DASH
- ⊙ PREFORMED PLASTIC PAVEMENT MARKING - LINE 6" WHITE SKIP DASH
- ⊙ MODIFIED URETHANE PAVEMENT MARKING - LINE 8" WHITE SOLID
- ⊙ MODIFIED URETHANE PAVEMENT MARKING - LINE 8" WHITE DOTTED
- ⊙ MODIFIED URETHANE PAVEMENT MARKING - LINE 12" WHITE SOLID
- ⊙ MODIFIED URETHANE PAVEMENT MARKING - LINE 12" YELLOW SOLID
- ⊙ MODIFIED URETHANE PAVEMENT MARKING - LINE 24" WHITE SOLID (STOP BAR)

• PAVEMENT MARKING SHALL BE IN ACCORDANCE WITH DISTRICT CADD STANDARDS - 780001-D4

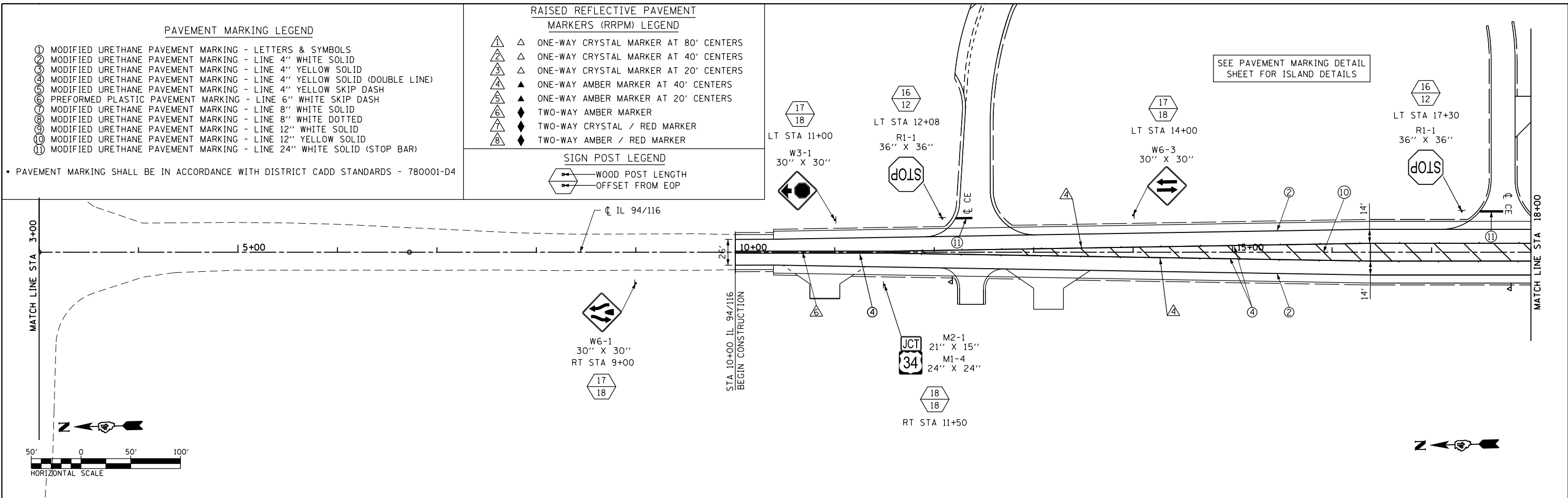
RAISED REFLECTIVE PAVEMENT MARKERS (RRPM) LEGEND

- △ ONE-WAY CRYSTAL MARKER AT 80' CENTERS
- △ ONE-WAY CRYSTAL MARKER AT 40' CENTERS
- △ ONE-WAY CRYSTAL MARKER AT 20' CENTERS
- ▲ ONE-WAY AMBER MARKER AT 40' CENTERS
- ▲ ONE-WAY AMBER MARKER AT 20' CENTERS
- ◆ TWO-WAY AMBER MARKER
- ◆ TWO-WAY CRYSTAL / RED MARKER
- ◆ TWO-WAY AMBER / RED MARKER

SIGN POST LEGEND

- WOOD POST LENGTH
- OFFSET FROM EOP

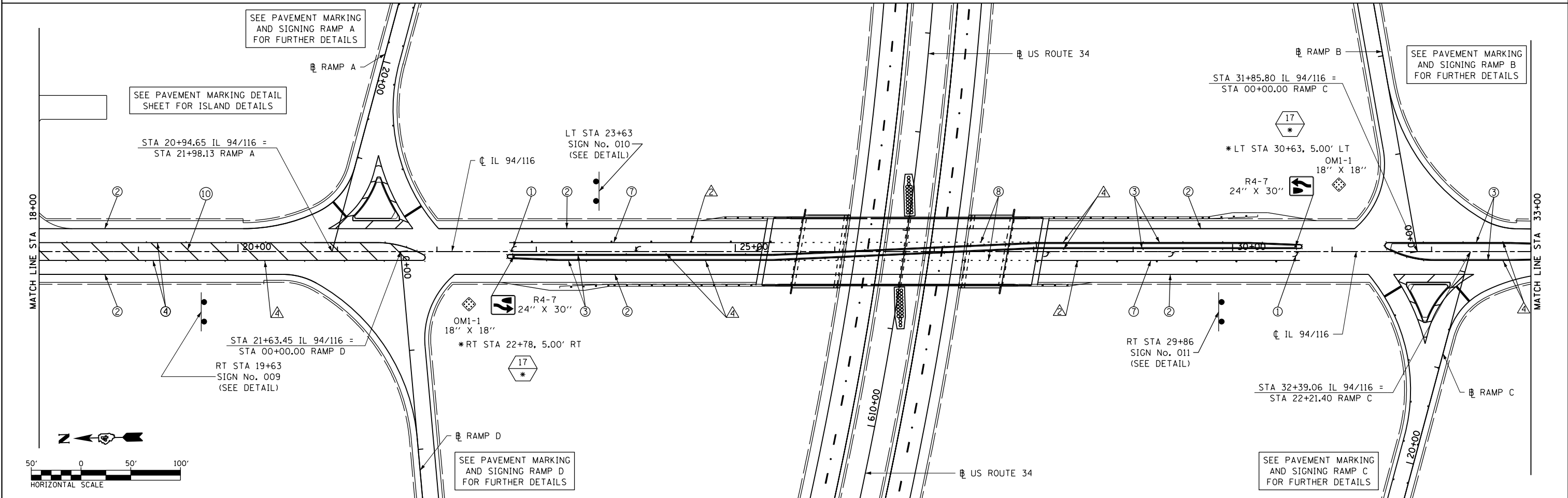
SEE PAVEMENT MARKING DETAIL SHEET FOR ISLAND DETAILS



SEE PAVEMENT MARKING AND SIGNING RAMP A FOR FURTHER DETAILS

SEE PAVEMENT MARKING DETAIL SHEET FOR ISLAND DETAILS

SEE PAVEMENT MARKING AND SIGNING RAMP B FOR FURTHER DETAILS



FILE NAME = D468409-SHT-12-PMK-IL-94-116-01.dgn

USER NAME = zach1
 PLOT SCALE = 100.0000' / in.
 PLOT DATE = 10/16/2012

DESIGNED - DBS
 DRAWN - PSBA
 CHECKED - CSB
 DATE - 10/2012

REVISED -
 REVISED -
 REVISED -
 REVISED -

STATE OF ILLINOIS
 DEPARTMENT OF TRANSPORTATION

PAVEMENT MARKING AND SIGNING
 IL ROUTE 94 / 116

SCALE: 1" = 50' SHEET NO. 12 OF 24 SHEETS STA. 3+00 TO STA. 33+00

F.A.P. RTE.	SECTION	COUNTY	TOTAL SHEETS	SHEET NO.
313	7-2 ; 6-1	HENDERSON	976	400
CONTRACT NO. 68409				
ILLINOIS FED. AID PROJECT				