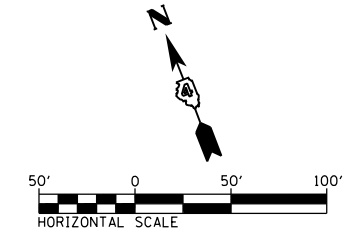
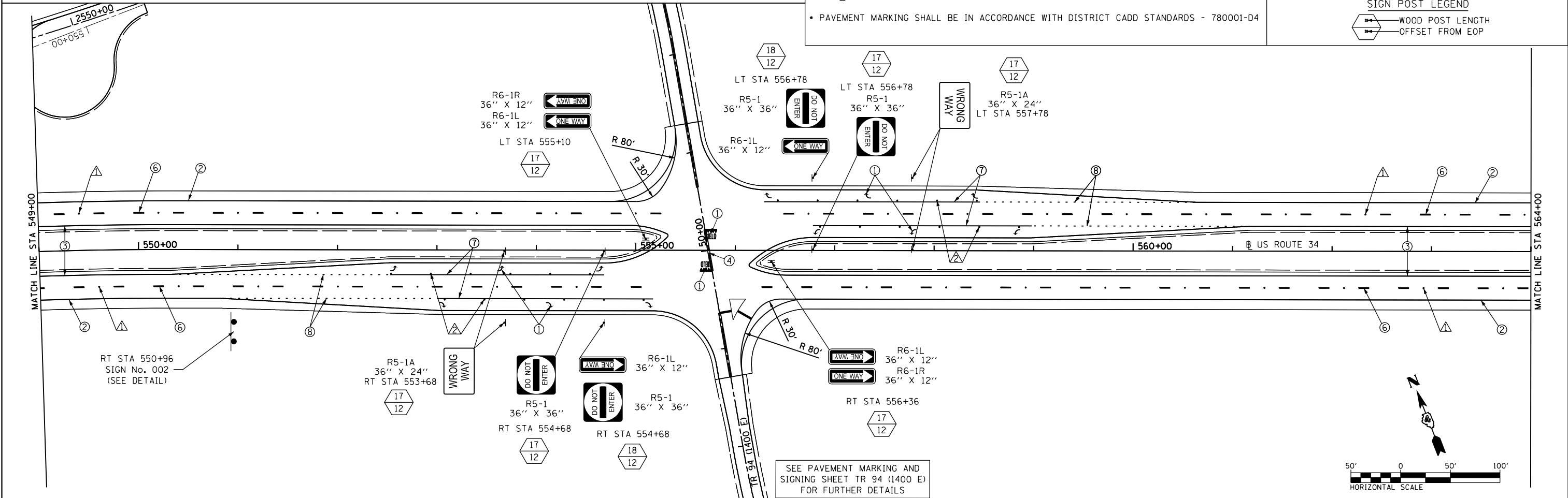


PAVEMENT MARKING LEGEND		RAISED REFLECTIVE PAVEMENT MARKERS (RRPM) LEGEND	
①	MODIFIED URETHANE PAVEMENT MARKING - LETTERS & SYMBOLS	△	ONE-WAY CRYSTAL MARKER AT 80' CENTERS
②	MODIFIED URETHANE PAVEMENT MARKING - LINE 4" WHITE SOLID	△	ONE-WAY CRYSTAL MARKER AT 40' CENTERS
③	MODIFIED URETHANE PAVEMENT MARKING - LINE 4" YELLOW SOLID	△	ONE-WAY CRYSTAL MARKER AT 20' CENTERS
④	MODIFIED URETHANE PAVEMENT MARKING - LINE 4" YELLOW SOLID (DOUBLE LINE)	▲	ONE-WAY AMBER MARKER AT 40' CENTERS
⑤	MODIFIED URETHANE PAVEMENT MARKING - LINE 4" YELLOW SKIP DASH	▲	ONE-WAY AMBER MARKER AT 20' CENTERS
⑥	PREFORMED PLASTIC PAVEMENT MARKING - LINE 6" WHITE SKIP DASH	◆	TWO-WAY AMBER MARKER
⑦	MODIFIED URETHANE PAVEMENT MARKING - LINE 8" WHITE SOLID	◆	TWO-WAY CRYSTAL / RED MARKER
⑧	MODIFIED URETHANE PAVEMENT MARKING - LINE 8" WHITE DOTTED	◆	TWO-WAY AMBER / RED MARKER
⑨	MODIFIED URETHANE PAVEMENT MARKING - LINE 12" WHITE SOLID		
⑩	MODIFIED URETHANE PAVEMENT MARKING - LINE 12" YELLOW SOLID		
⑪	MODIFIED URETHANE PAVEMENT MARKING - LINE 24" WHITE SOLID (STOP BAR)		

SIGN POST LEGEND	
⊕	WOOD POST LENGTH
⊖	OFFSET FROM EOP

• PAVEMENT MARKING SHALL BE IN ACCORDANCE WITH DISTRICT CADD STANDARDS - 780001-D4



FILE NAME = D468409-SHT-02-PMK-US34.dgn	USER NAME = zach1	DESIGNED - DBS	REVISED -	STATE OF ILLINOIS DEPARTMENT OF TRANSPORTATION	PAVEMENT MARKING & SIGNING US ROUTE 34			F.A.P. RTE. 313	SECTION 7-2 ; 6-1	COUNTY HENDERSON	TOTAL SHEETS 976	SHEET NO. 390
	PLOT SCALE = 100.0000' / 1" =	DRAWN - PSBA	REVISED -		SCALE: 1" = 50'	SHEET NO. 2 OF 24 SHEETS	STA. 534+00 TO STA. 564+00	CONTRACT NO. 68409				
	PLOT DATE = 10/16/2012	CHECKED - CSB	REVISED -		ILLINOIS FED. AID PROJECT							
		DATE - 10/2012	REVISED -									